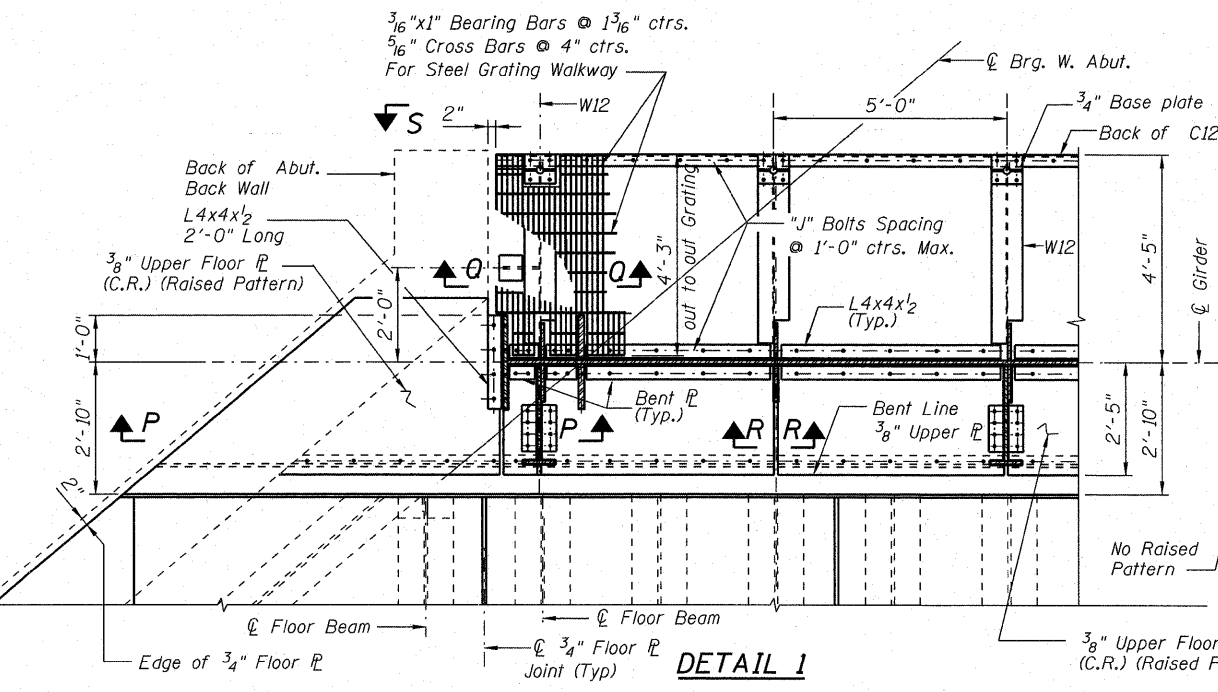
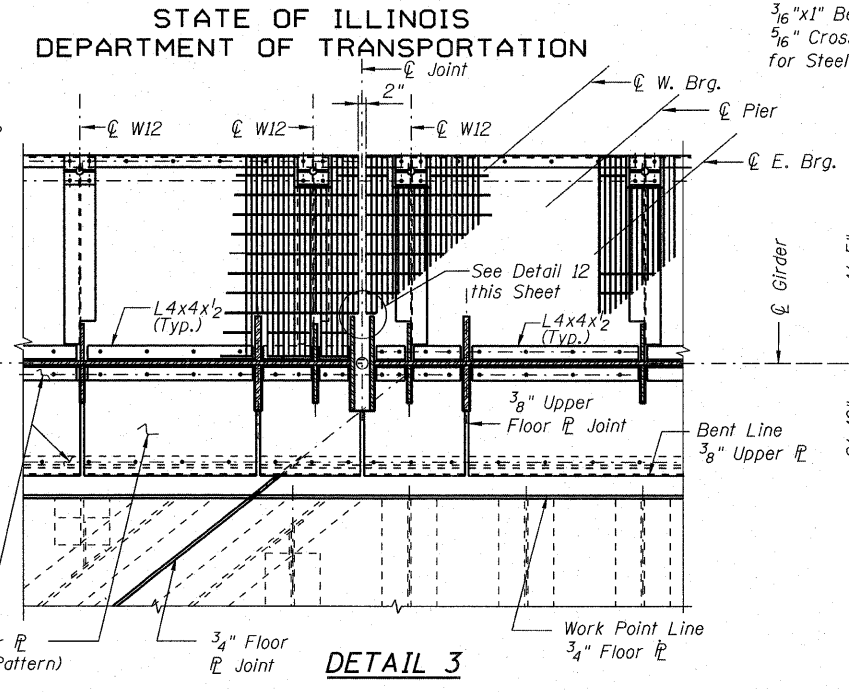


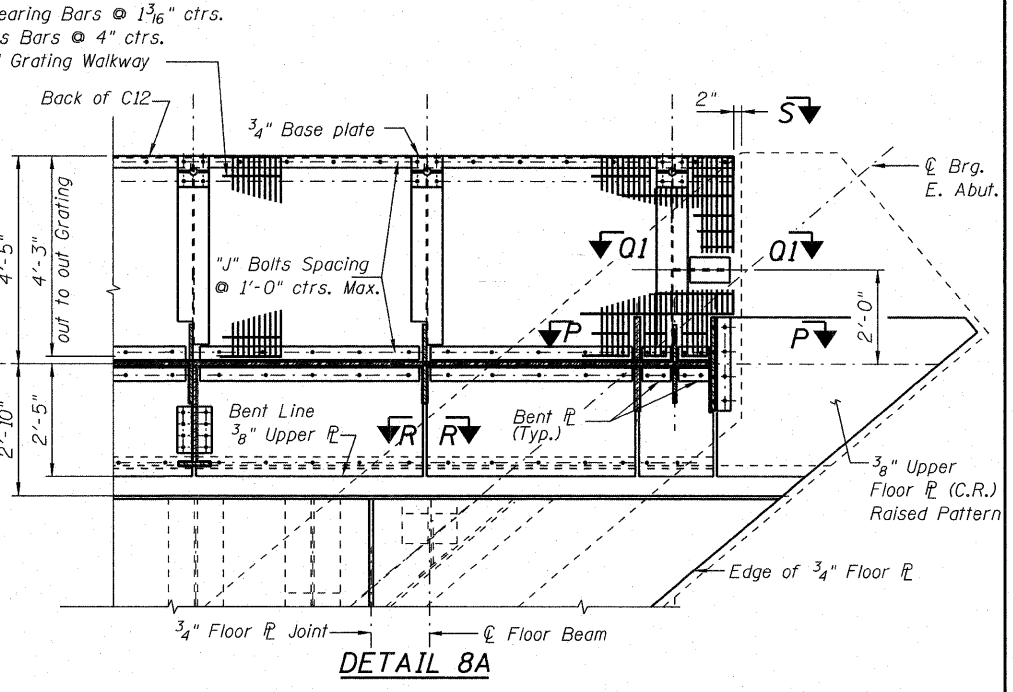
STATE OF ILLINOIS
DEPARTMENT OF TRANSPORTATION



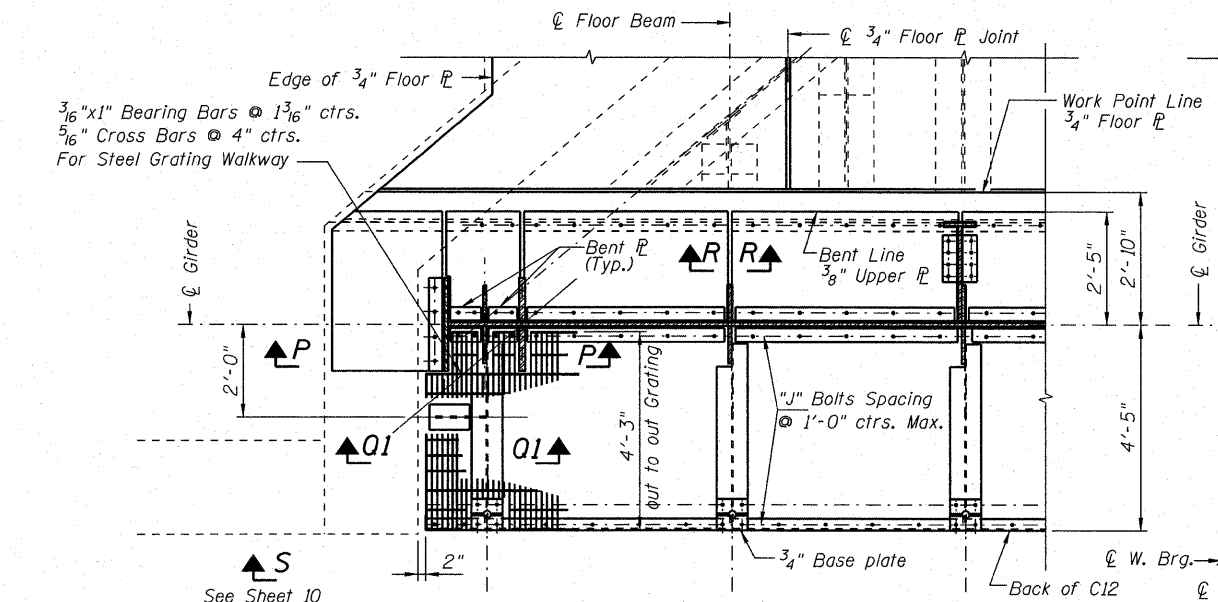
DETAIL 1



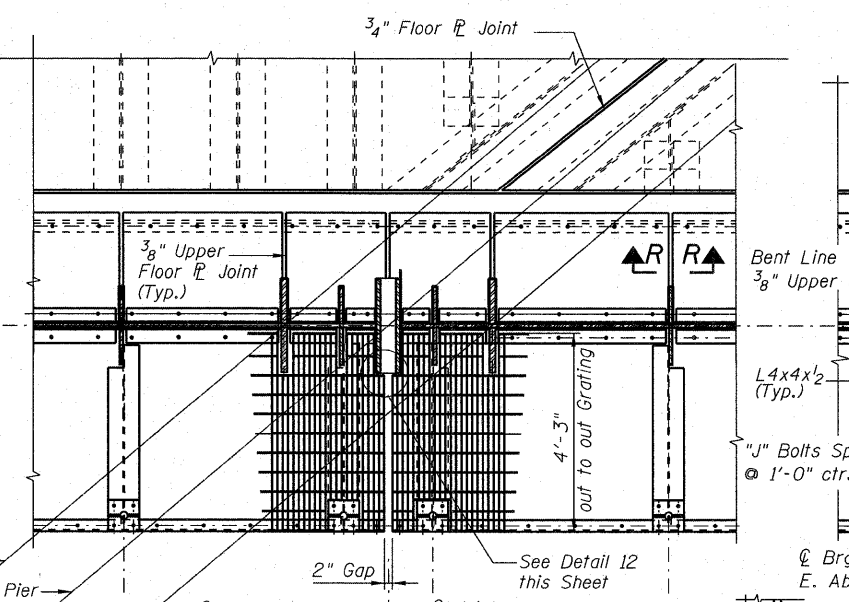
DETAIL 3



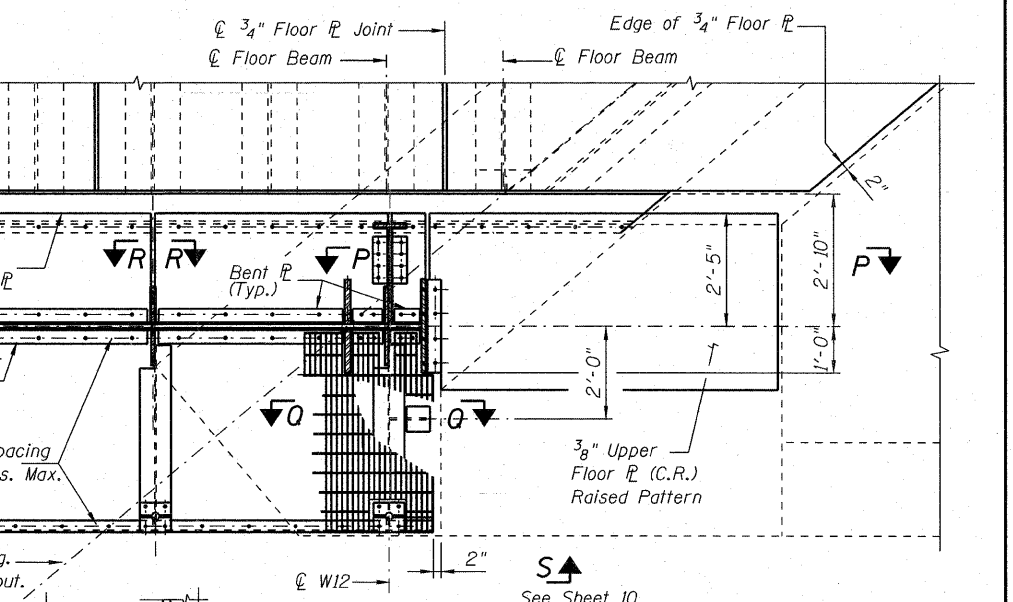
DETAIL 8A



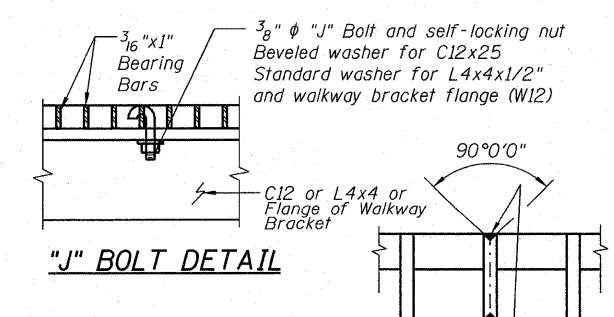
DETAIL 8



DETAIL 9

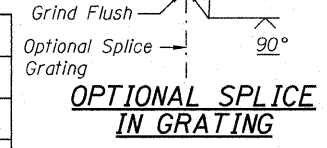


DETAIL 1A

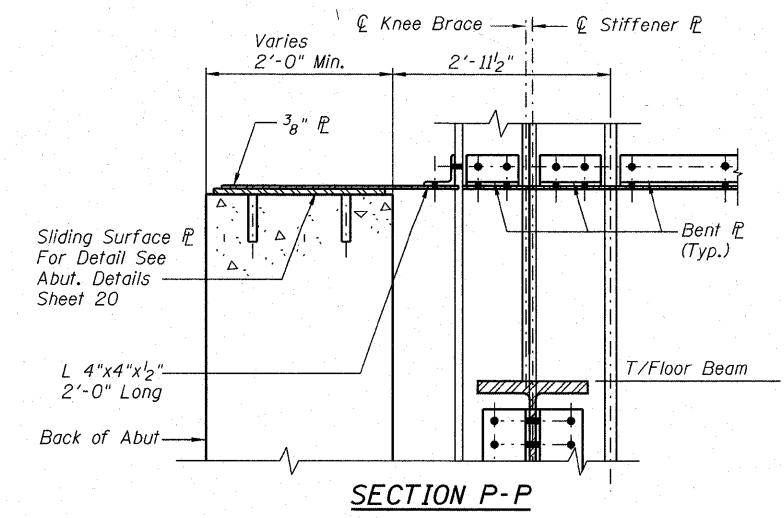


"J" BOLT DETAIL

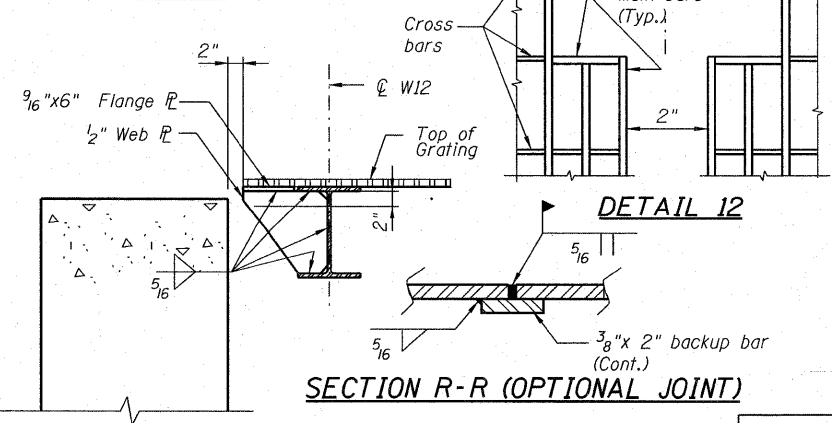
DESIGNED	-KJH
CHECKED	-MGB
DRAWN	-RJ
CHECKED	-MGB



OPTIONAL SPLICE IN GRATING



SECTION P-P



SECTION Q-Q (OPTIONAL JOINT)

NOTES:
Grating plates, bars and angles shall conform to ASTM A36, galvanized in accordance with ASTM A123, or be fabricated from aluminum conforming to ASTM B361-Alloy 6061-T6. Aluminum surfaces in contact with concrete shall receive a heavy coat of bituminous paint or cold applied asphaltic mastic. Fasteners shall consist of stainless steel, type 304 or be zinc plated according to ASTM B633 for exterior use. Provide stainless steel fasteners for aluminum grating.
Grating shall be bolted to longitudinal channel and along girder and walkway bracket by means of 3/8 inch diameter "J" bolts or other type of bolts Approved by the Engineer. Each panel shall have one bolt in each corner with a maximum longitudinal spacing of 1'-0 inch ctrs. between bolts. Drill 7/16 inch diameter holes for "J" bolts in field.
Joints in 3/4 inch floor plate and Ballast stop plate and 3/8 inch upper floor plate to be at 10ft max centers. Joints to be staggered in floor plate.
All materials and labor for fabrication and installation of grating will be paid for at the Lump Sum cost of Metal Grating
Work this Sheet with Sheet 4 and 5.

STEEL DETAILS-4
STRUCTURE NO. 016-6201

SHEET NO. 9 25 SHEETS	F.A.P RTE. 330	SECTION 73 R-B	COUNTY COOK	TOTAL SHEETS 136	SHEET NO. 61
	CONTRACT NO. 60K64				
DATE: 12/17/10		ILLINOIS FED. AID PROJECT			

McDonough Associates Inc.
Engineers / Architects
180 East Randolph Street Chicago, Illinois 60601