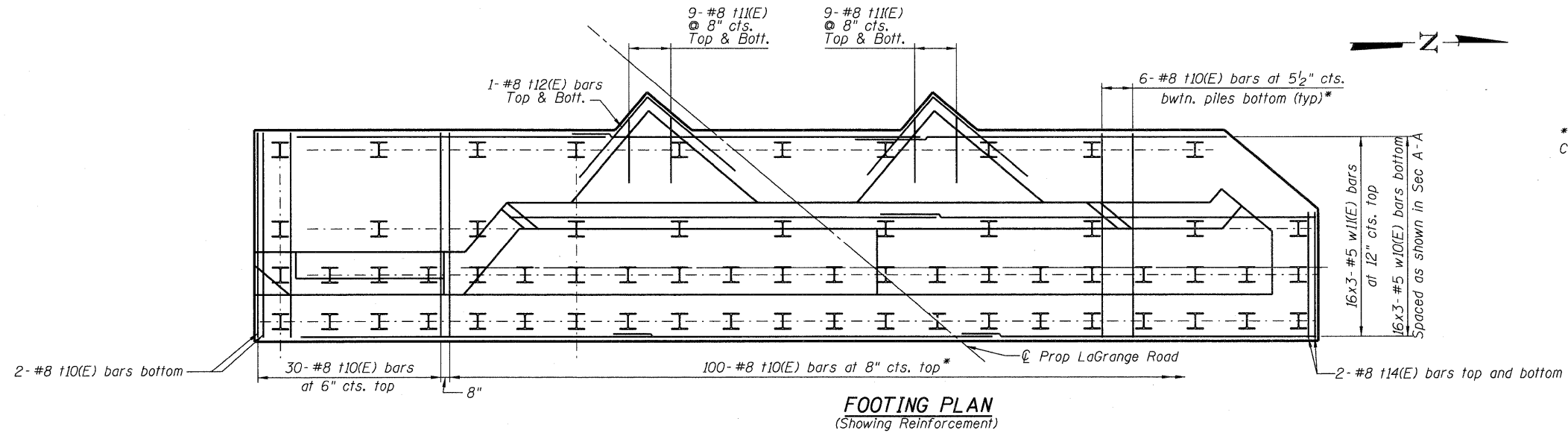
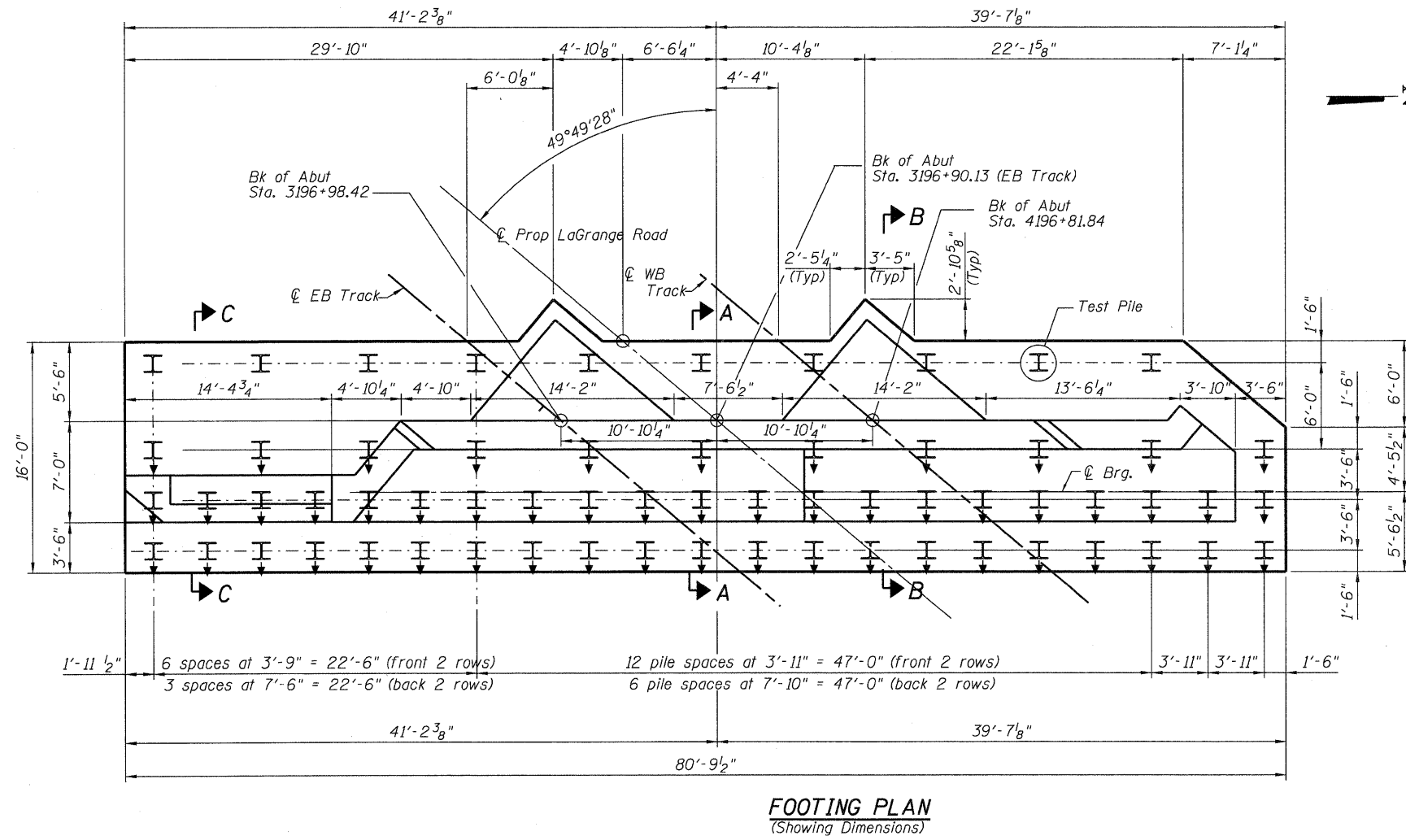


STATE OF ILLINOIS
DEPARTMENT OF TRANSPORTATION



* At the North End cut #10(E) bars in the field to fit. Cost included with Reinforcement Bars. Epoxy Coated.



PILE DATA

TYPE: Steel HPI4x117
 Nominal Required Bearing = 929 kips
 Factored Resistance Available = 310 kips
 Est. Length: 104 feet (vertical)
 No. Production Piles: 62
 No. Test Piles: 1

⊏ Straight (no batter)
 ⊏ Battered Pile

For Sections A-A, B-B & C-C, see Sheet 16.

DESIGNED - JCE
CHECKED - JCA
DRAWN - JCE
CHECKED - JCA

McDonough Associates Inc.
 Engineers / Architects
 130 East Randolph Street Chicago, Illinois 60601

SHEET NO. 15 25 SHEETS	F.A.P RTE. 330	SECTION 73 R-B	COUNTY COOK	TOTAL SHEETS 136	SHEET NO. 67
	CONTRACT NO. 60K64				
DATE: 12/17/10		ILLINOIS FED. AID PROJECT			

**WEST ABUTMENT FOOTING PLAN
STRUCTURE NO. 016-6201**