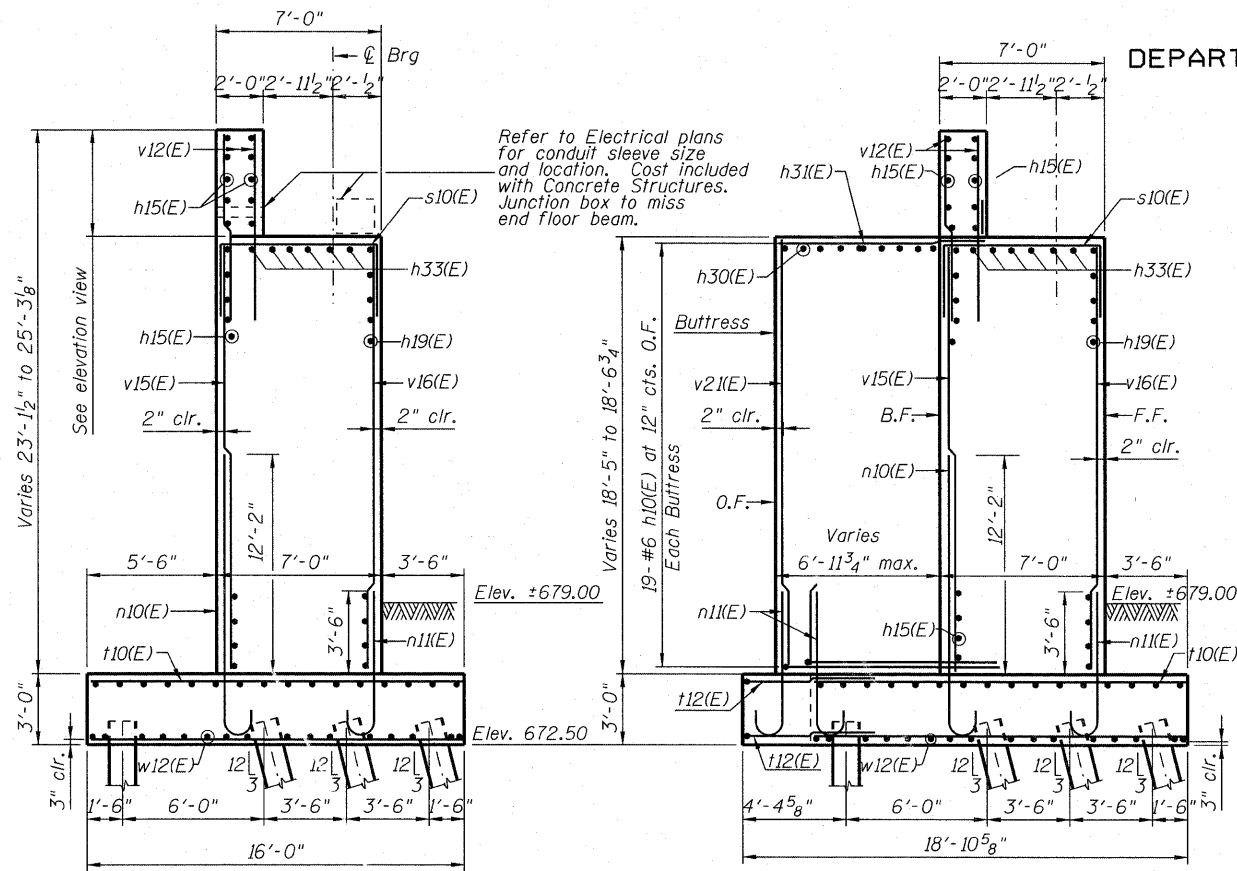
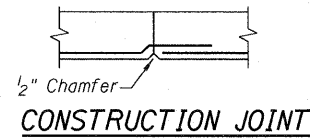


STATE OF ILLINOIS
DEPARTMENT OF TRANSPORTATION

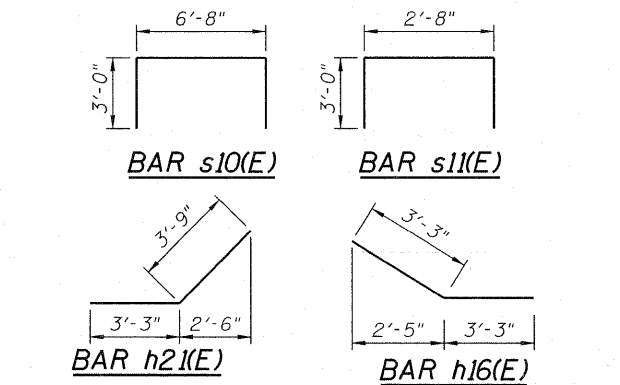
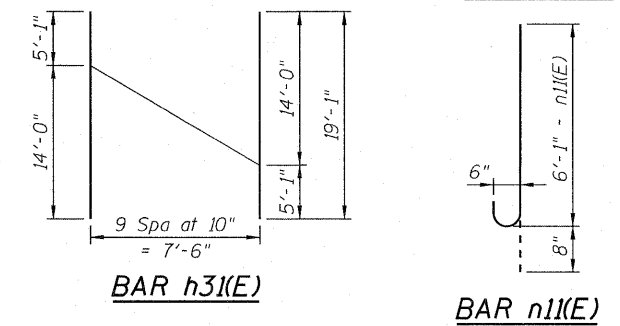
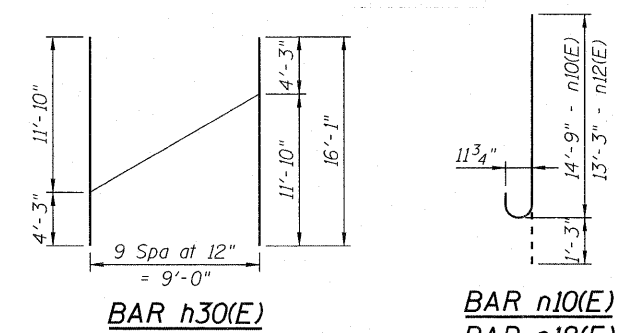


SECTION A-A

SECTION B-B

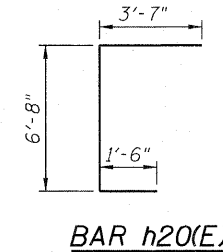


CONSTRUCTION JOINT



Bar	"A"	"B"
h10(E)	11'-10"	14'-1"
h22(E)	3'-0"	2'-11"
h23(E)	6'-6"	4'-6"
t12(E)	9'-0"	9'-0"

BAR h10(E), h22(E)
h23(E) & t12(E)



BAR h20(E)

BILL OF MATERIAL

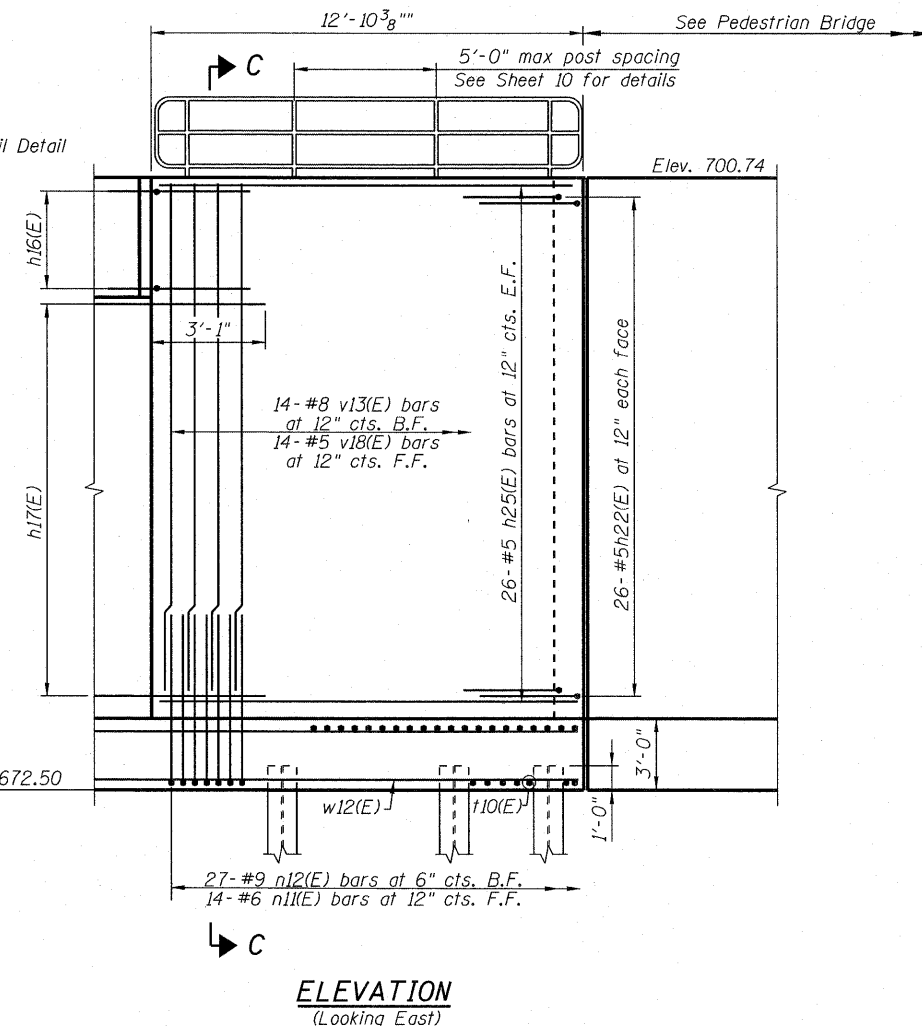
Bar	No.	Size	Length	Shape
h10(E)	38	#6	25'-11"	U
h16(E)	14	#5	6'-6"	U
h17(E)	45	#5	6'-3"	U
h18(E)	8	#5	3'-6"	U
h19(E)	33	#5	11'-3"	U
h20(E)	26	#5	11'-9"	U
h21(E)	7	#5	9'-7"	U
h22(E)	78	#5	5'-11"	U
h23(E)	26	#5	11'-0"	U
h25(E)	52	#5	12'-7"	U
h27(E)	58	#5	30'-7"	U
h28(E)	36	#5	33'-11"	U
h30(E)	10	#6	16'-1"	U
h31(E)	10	#6	19'-1"	U
h33(E)	10	#6	32'-9"	U
h35(E)	14	#6	35'-0"	U
n10(E)	130	#9	16'-0"	U
n11(E)	119	#6	6'-9"	U
n12(E)	27	#9	14'-6"	U
s10(E)	66	#5	12'-8"	U
s11(E)	8	#5	8'-8"	U
t10(E)	273	#8	15'-8"	U
t11(E)	36	#8	9'-0"	U
t12(E)	4	#8	18'-0"	U
w12(E)	96	#5	30'-4"	U
v12(E)	75	#6	7'-6"	U
v13(E)	14	#8	20'-3"	U
v15(E)	65	#9	18'-0"	U
v16(E)	63	#5	18'-0"	U
v18(E)	14	#5	24'-11"	U
v19(E)	40	#6	9'-6"	U
v21(E)	42	#6	18'-2"	U
Porous Granular Embankment		Cu. Yd.	324	
Structure Excavation		Cu. Yd.	1,407	
Concrete Structures		Cu. Yd.	608.9	
Reinforcement Bars, Epoxy Coated		Pound	43,930	
Furnishing Steel Piles, HP14x117		Foot	5,026	
Driving Piles		Foot	5,026	
Test Pile Steel, HP14x117		Each	1	
Concrete Sealer		Sq. Ft.	2,190	
Geocomposite Wall Drain		Sq. Yd.	254	
Pipe Drains 4"		Foot	15	
Pipe Underdrains For Structures 4"		Foot	99	

Bars indicated thus 1 x 3-#5 etc. indicates 1 line of bars with 3 lengths per line.

Space reinforcement in abutment to miss anchor bolts.

DESIGNED - JCE
CHECKED - JCA
DRAWN - JCE
CHECKED - JCA

SECTION C-C



ELEVATION
(Looking East)

EAST ABUTMENT SECTIONS AND BOM
STRUCTURE NO. 016-6201

SHEET NO. 19 25 SHEETS	F.A.P. RTE.	SECTION	COUNTY	TOTAL SHEETS	SHEET NO.
	330	73 R-B	COOK	136	71
DATE: 12/17/10			ILLINOIS FED. AID PROJECT		
CONTRACT NO. 60K64					

McDonough Associates Inc.
Engineers / Architects
130 East Randolph Street Chicago, Illinois 60601