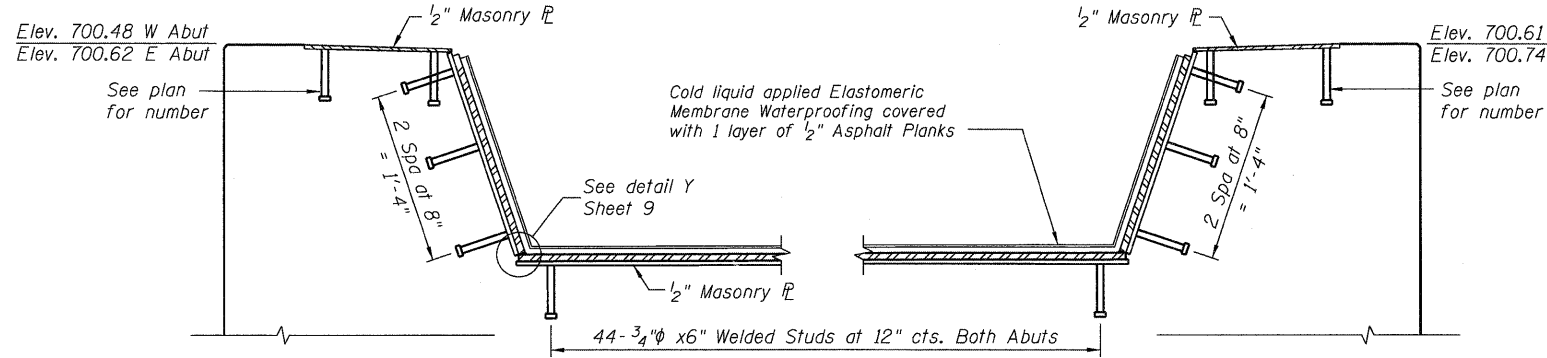
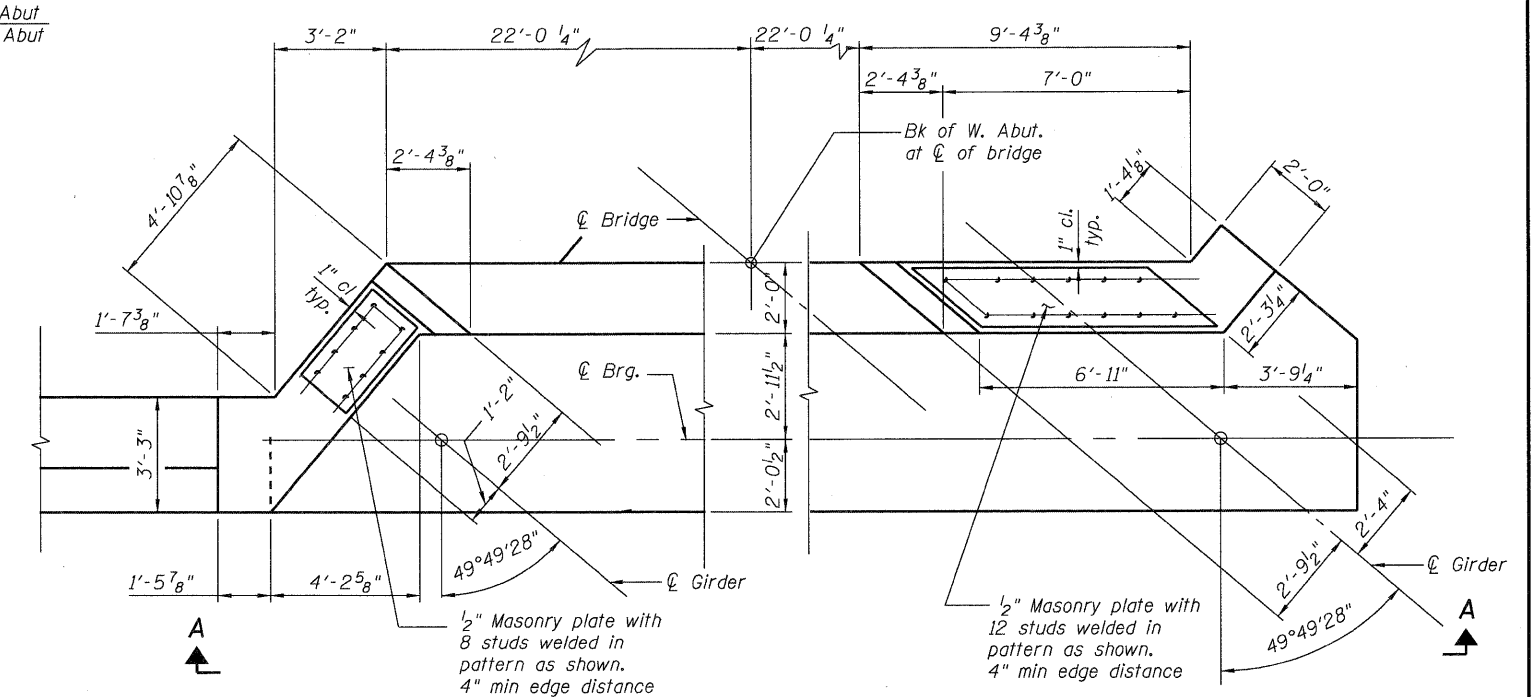


STATE OF ILLINOIS  
DEPARTMENT OF TRANSPORTATION

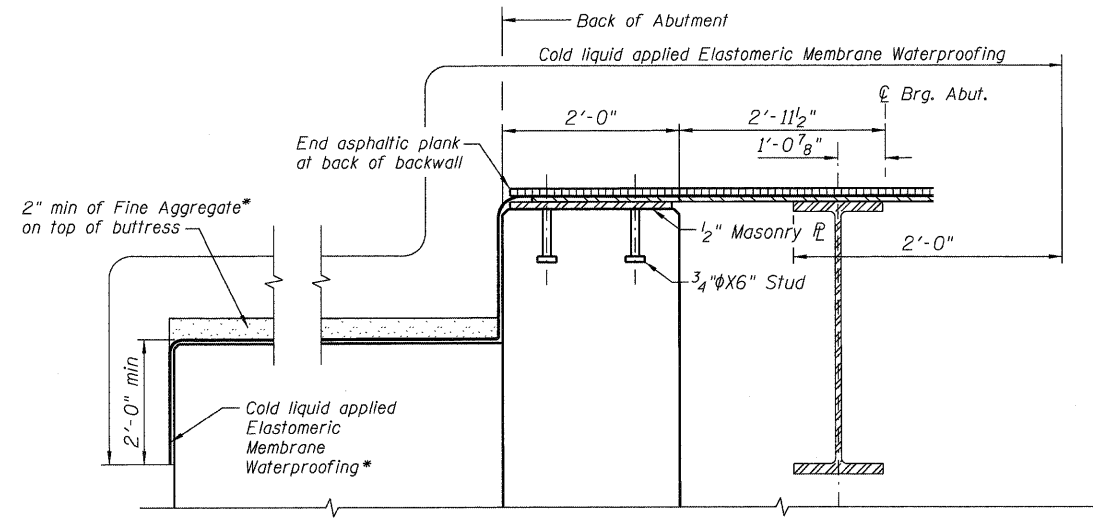
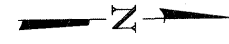


**SECTION A-A WEST ABUTMENT**  
**SECTION B-B EAST ABUTMENT**

Note:  
For additional details,  
See Typical Section at  
Knee brace-Sheet 8.

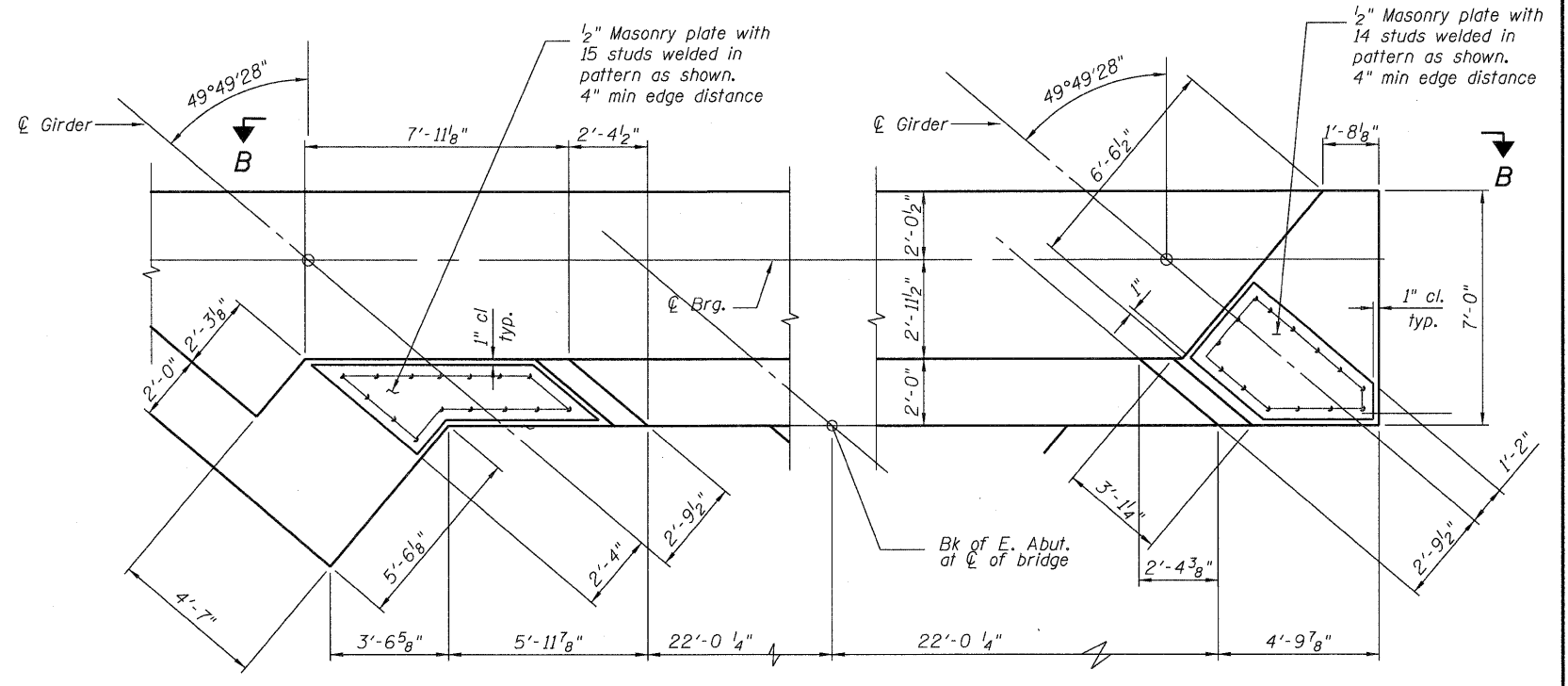


**WEST ABUTMENT DETAILS**

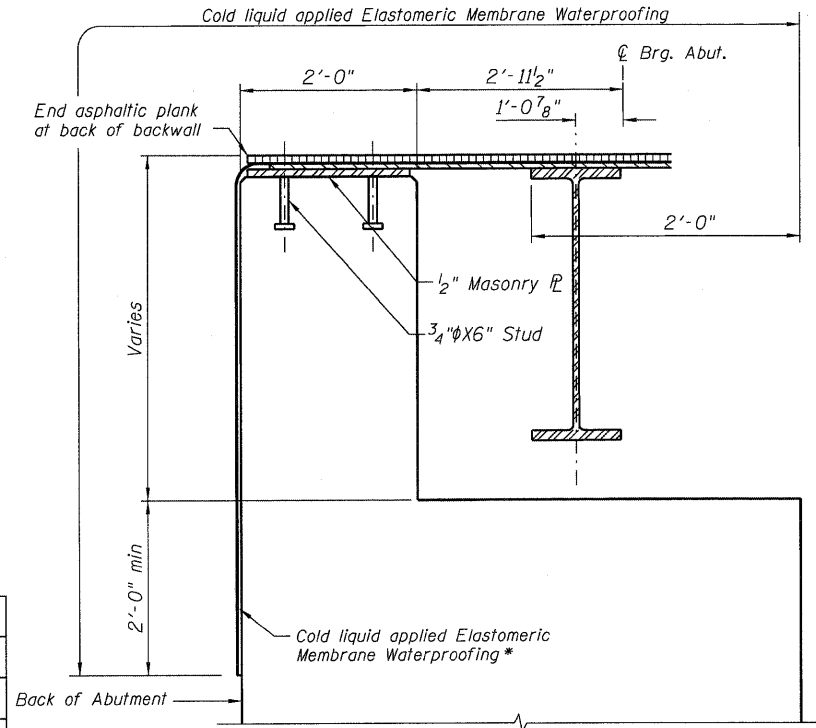
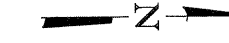


**SECTION THRU ABUTMENT AT BUTTRESS**

\*Included in the cost of  
Waterproofing



**EAST ABUTMENT DETAILS**



**SECTION THRU ABUTMENT**

Note:  
Cost of studs included in the cost of "Furnishing Structural Steel".

DESIGNED - JCE
CHECKED - JCA
DRAWN - JCE
CHECKED - JCA

**ABUTMENT DETAILS**  
**STRUCTURE NO. 016-6201**

**McDonough Associates Inc.**  
Engineers / Architects  
130 East Randolph Street Chicago, Illinois 60601

SHEET NO. 20 25 SHEETS	F.A.P RTE. 330	SECTION 73 R-B	COUNTY COOK	TOTAL SHEETS 136	SHEET NO. 72
	CONTRACT NO. 60K64				
DATE: 12/17/10		ILLINOIS FED. AID PROJECT			