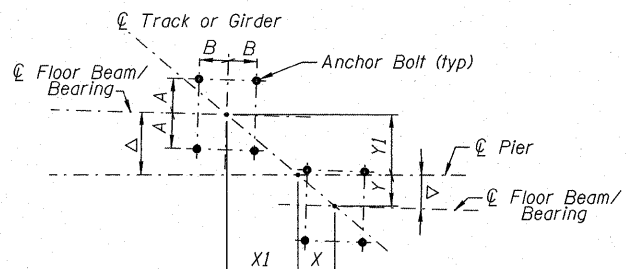
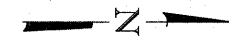
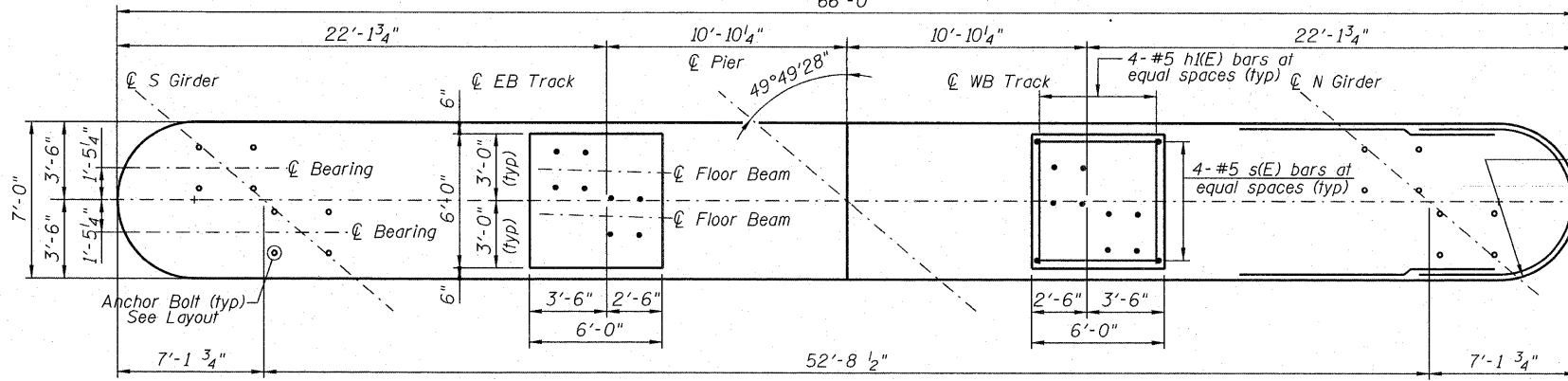


STATE OF ILLINOIS
DEPARTMENT OF TRANSPORTATION

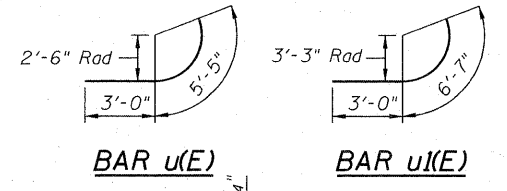


ANCHOR BOLT LAYOUT

Location	Δ	X1	Y1	X	Y	A	B	Di. x Length
S Girder	0°00'00"	1'-8 7/16"	1'-5 1/4"	1'-8 7/16"	1'-5 1/4"	11"	1'-2 3/4"	2 1/2"x2'-6"
EB Track	1°42'09"	1'-7 9/16"	1'-4 1/2"	10 1/16"	8 1/2"	1'-1"	7 1/4"	1 1/4"x1'-0"
WB Track	1°42'09"	10 1/16"	8 1/2"	1'-7 9/16"	1'-4 1/2"	1'-1"	7 1/4"	1 1/4"x1'-0"
N Girder	0°00'00"	1'-8 7/16"	1'-5 1/4"	1'-8 7/16"	1'-5 1/4"	11"	1'-2 3/4"	2 1/2"x2'-6"

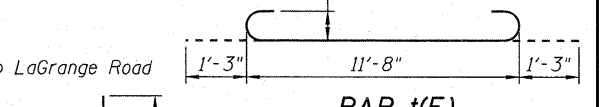


TOP PLAN

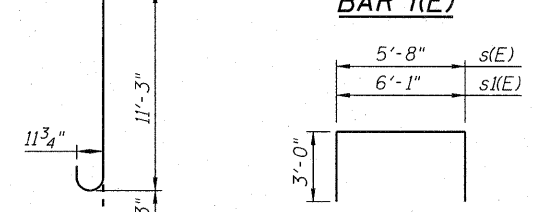


BAR u(E)

BAR u'(E)

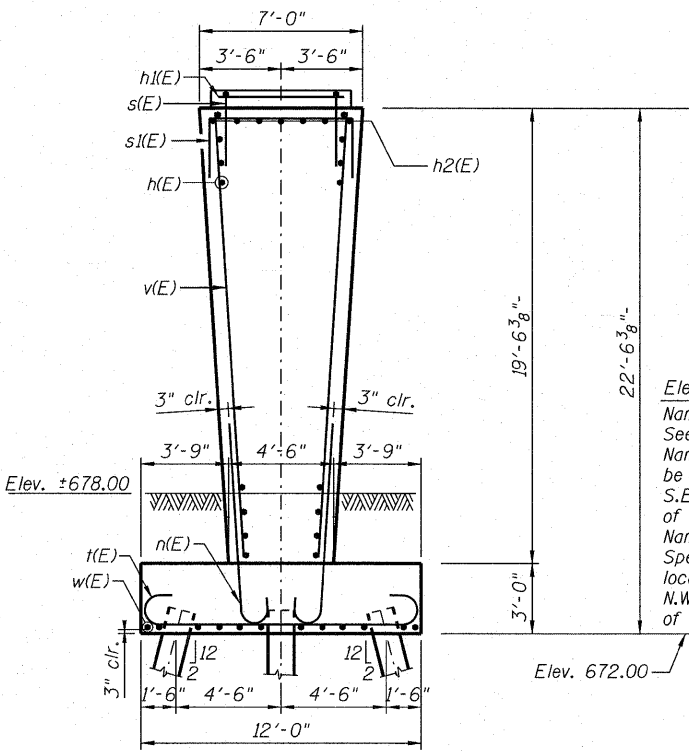


BAR t(E)

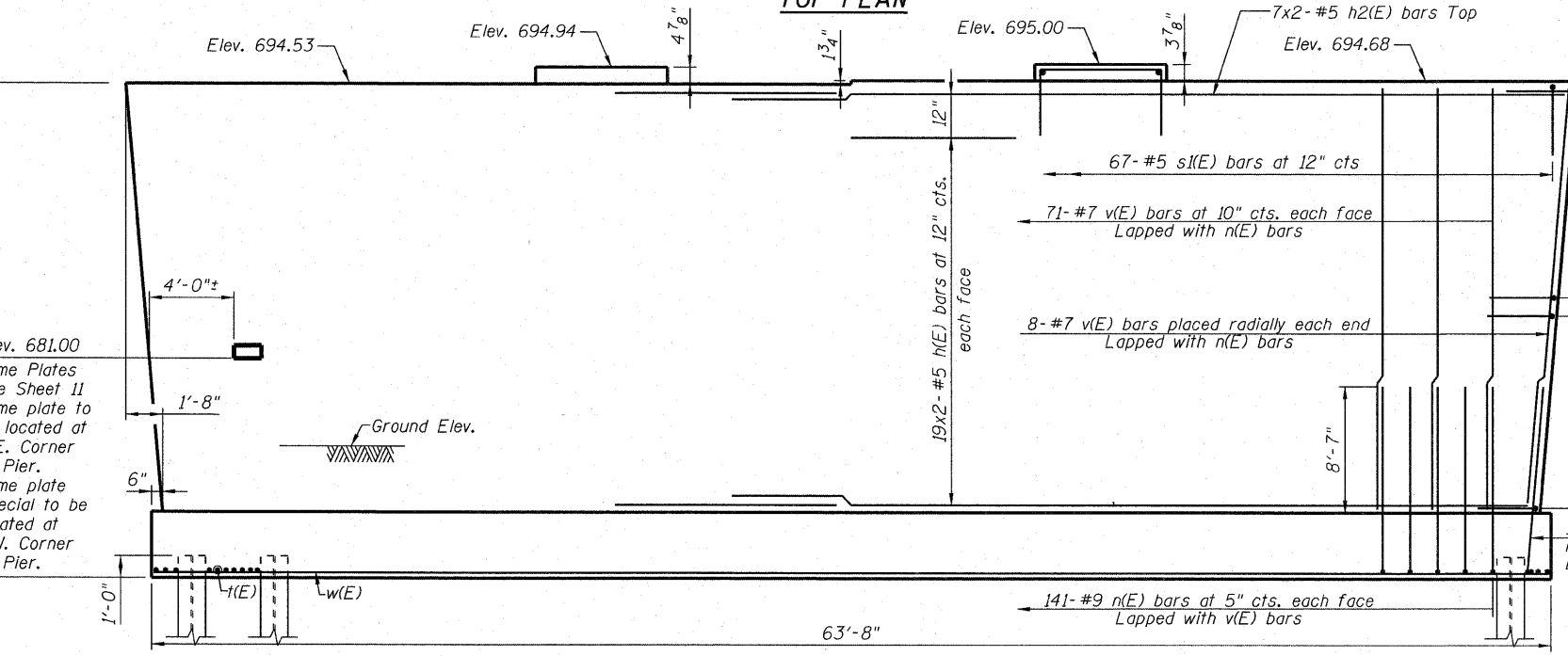


BAR s(E) & BAR s'(E)

BAR n(E)



END VIEW



ELEVATION
(Looking West)

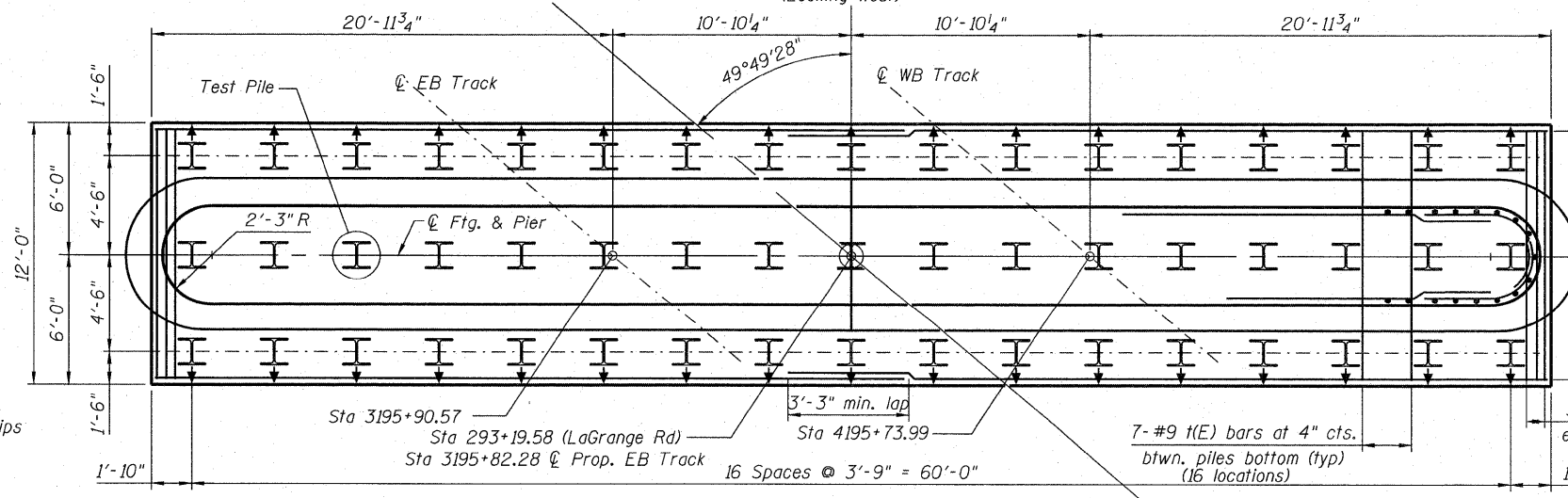
BILL OF MATERIAL

Bar	No.	Size	Length	Shape
h(E)	76	#5	31'-0"	—
h'(E)	8	#5	5'-8"	—
h2(E)	14	#5	34'-4"	—
n(E)	312	#9	12'-6"	—
s(E)	8	#5	11'-8"	┌
s'(E)	67	#5	12'-1"	┌
t(E)	118	#9	14'-2"	┌
u(E)	40	#5	8'-5"	┌
u'(E)	40	#5	9'-7"	┌
w(E)	24	#5	33'-4"	—
v(E)	158	#7	19'-0"	—
Structure Excavation		Cu. Yd.	331	
Concrete Structures		Cu. Yd.	485.7	
Reinforcement Bars, Epoxy Coated		Pound	30,590	
Furnishing Steel Piles HP14x117		Foot	5,552	
Driving Piles		Foot	5,552	
Test Pile Steel HP14x117		Each	1	
Concrete Sealer		Sq. Ft.	2,958	

MIN. LAP
#5 Top = 2'-11"
#5 Others = 2'-7"
#6 Top = 3'-6"

PILE DATA
Type: Steel HP14x117
Nominal Required Bearing = 929 kips
Factored Resistance Available = 310 kips
Est. Length: 110 feet (vertical)
No. Production Piles: 50
No. Test Piles: 1

Straight (no batter)
 Battered Pile



FOOTING PLAN

PIER
STRUCTURE NO. 016-6201

DESIGNED - JCE
CHECKED - JCA
DRAWN - JCE
CHECKED - JCA

SHEET NO. 21
25 SHEETS

McDonough Associates Inc.
Engineers / Architects
130 East Randolph Street Chicago, Illinois 60601

F.A.P RTE. 330	SECTION 73_R-B	COUNTY COOK	TOTAL SHEETS 136	SHEET NO. 73
CONTRACT NO. 60K64				
DATE: 12/17/10		ILLINOIS FED. AID PROJECT		