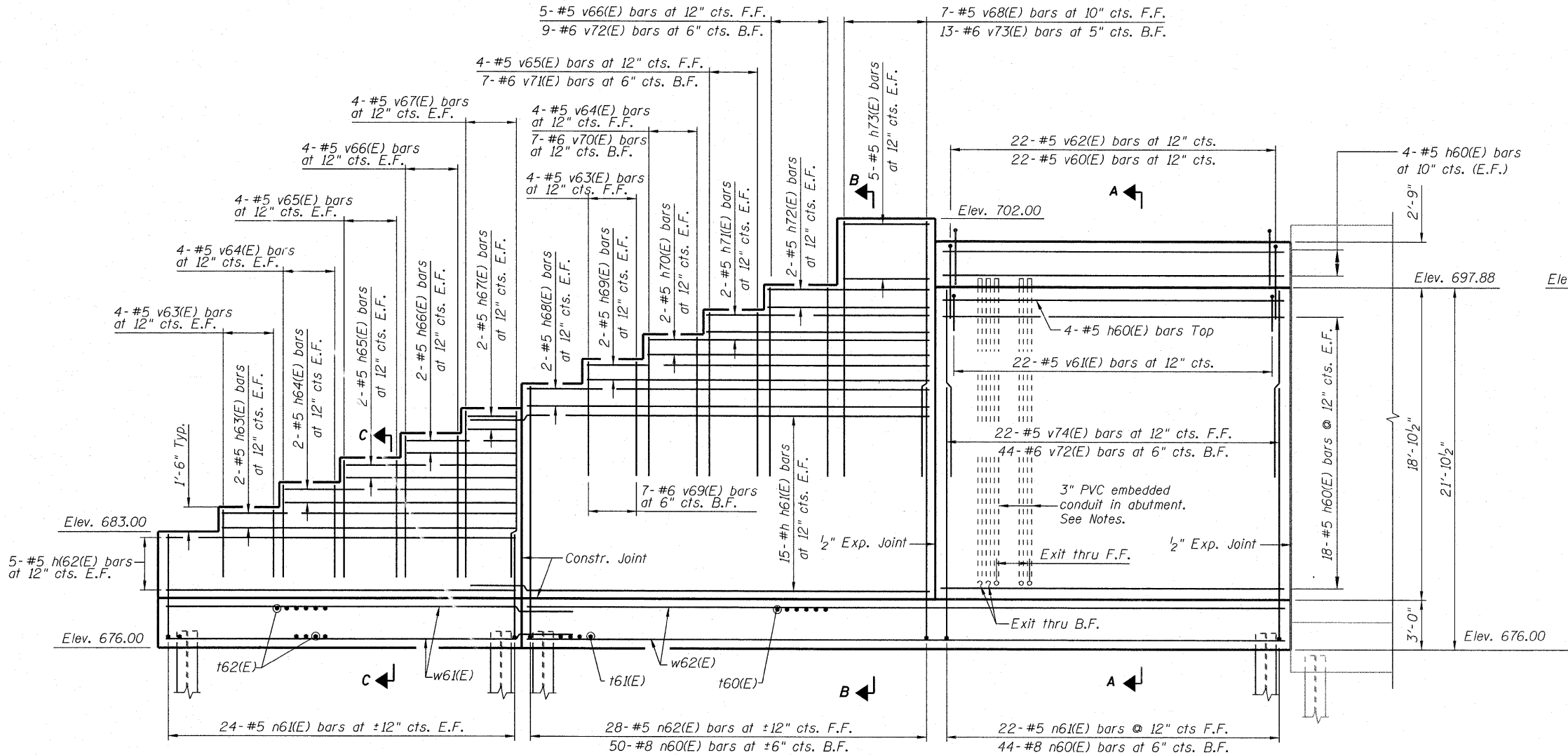
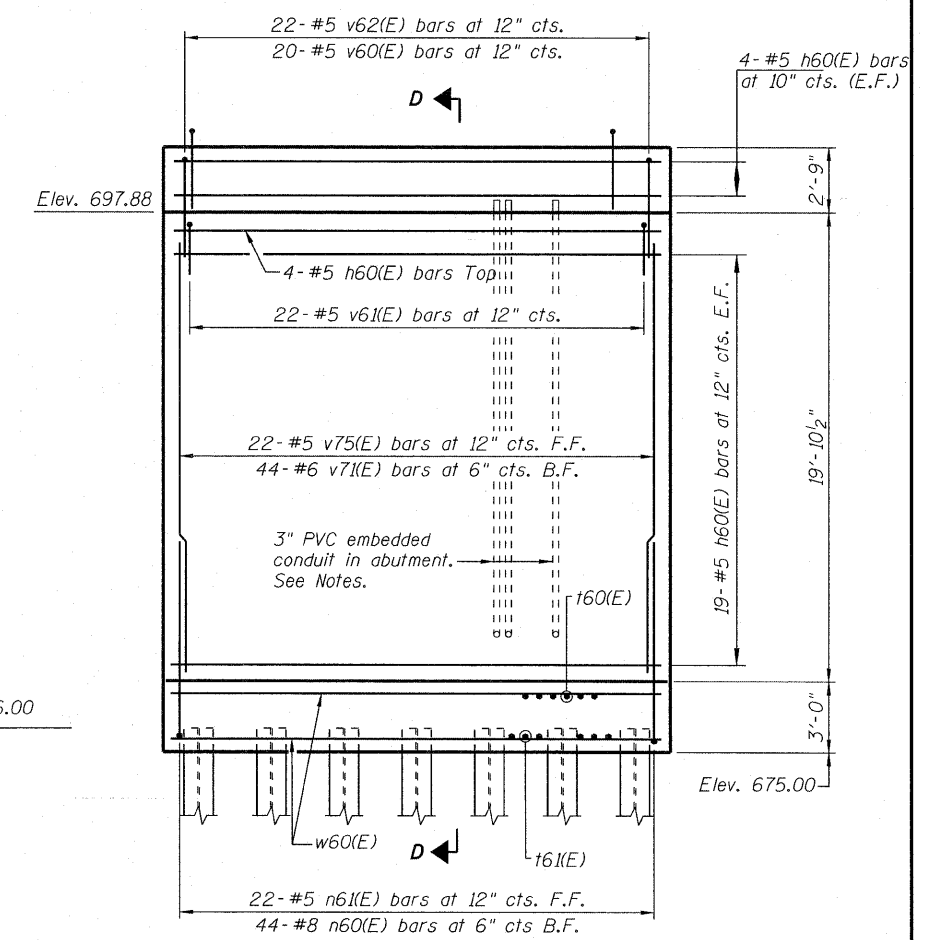


STATE OF ILLINOIS  
DEPARTMENT OF TRANSPORTATION



WEST ABUTMENT ELEVATION



EAST ABUTMENT ELEVATION

Notes:  
Space reinforcement in cap to miss anchor bolts.  
Pour steps monolithically with cap.  
For details of piles, see sheet 9.  
For footing plan, see sheet 6.  
For details of reinforcement and Bill of Material, see sheet 7.  
Final truss, Q brg. bearings and anchor bolt sizes, embedment, and layout to be determined by truss manufacturer. Pre-engineered truss shop drawings shall be approved prior to construction of the piers. Contractor shall verify all dimensions and elevations with final approved shop drawings. See special provisions.  
3" PVC conduit to extend out from abutment and be capped for future connection.

MINIMUM LAP

#5 Top = 2'-11"  
#5 Others = 2'-7"  
#8 Bars = 5'-5"

DESIGNED	MJL
CHECKED	MGB
DRAWN	MJL
CHECKED	MGB

ABUTMENT ELEVATIONS  
STRUCTURE NO. 016-7702

SHEET NO. 5 12 SHEETS	F.A.P RTE.	SECTION	COUNTY	TOTAL SHEETS	SHEET NO.
	330	73 R-B	COOK	136	82
	CONTRACT NO. 60K64				
DATE: 12/17/10		ILLINOIS FED. AID PROJECT			

**McDonough Associates Inc.**  
Engineers / Architects  
130 East Randolph Street Chicago, Illinois 60601