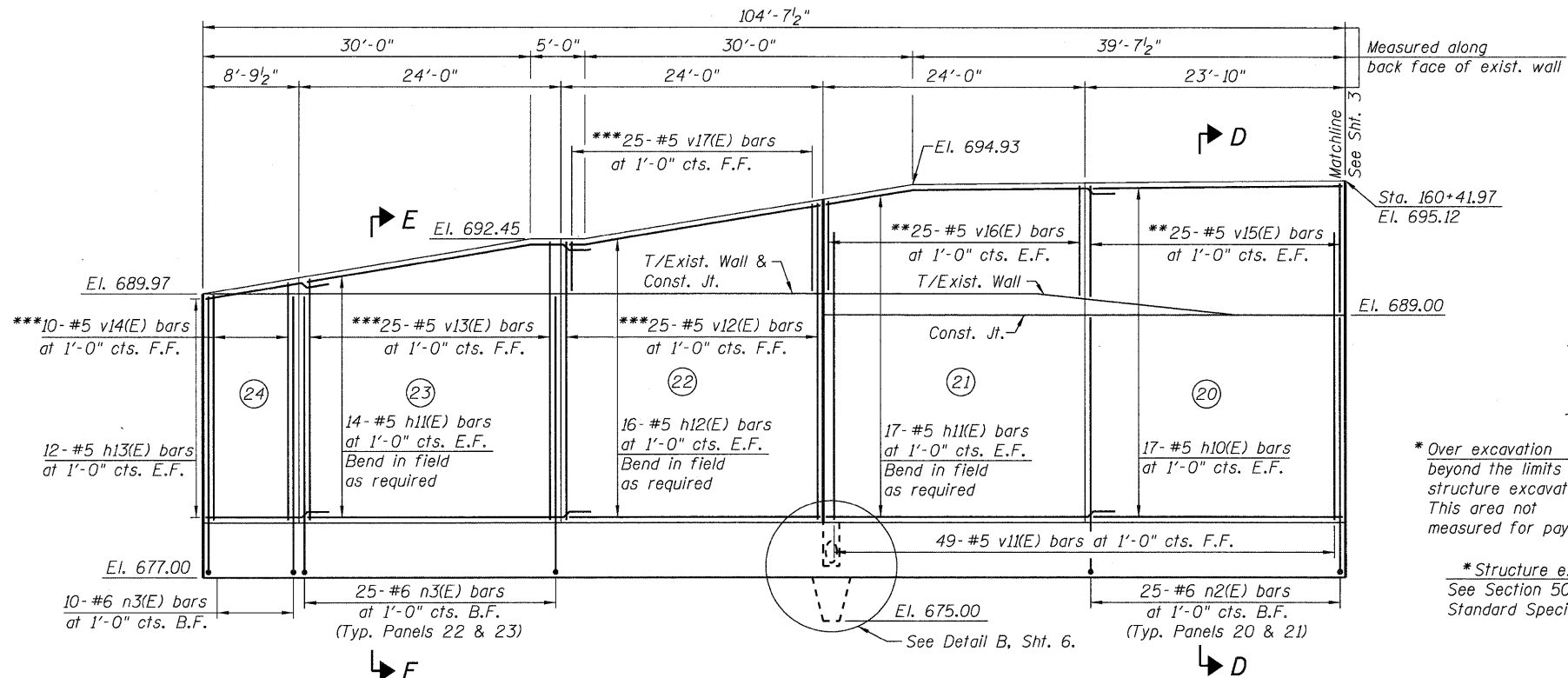
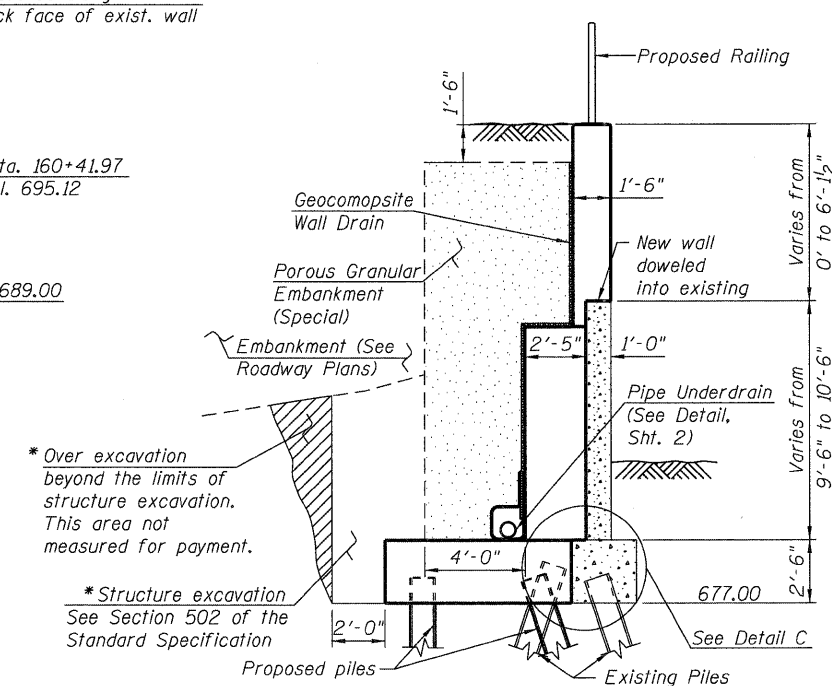


STATE OF ILLINOIS
DEPARTMENT OF TRANSPORTATION



WALL ELEVATION
Panels 20 thru 24
(Looking North at Front Face of Wall)

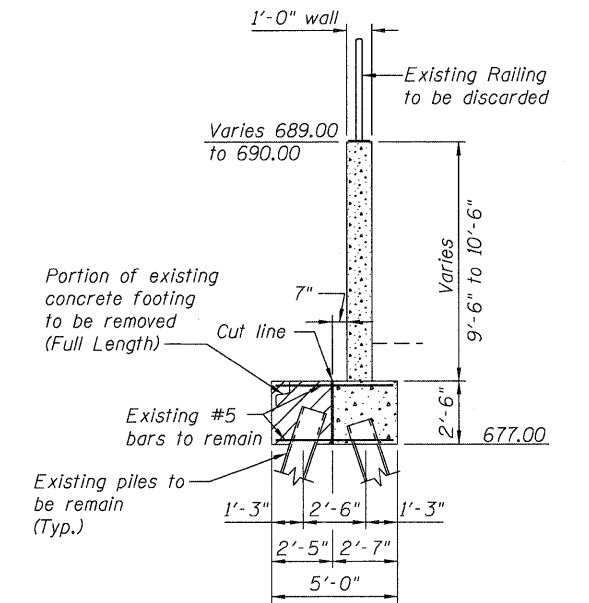
** Cut bars in field to maintain minimum clearance.
*** See field cutting diagram, sht. 6.



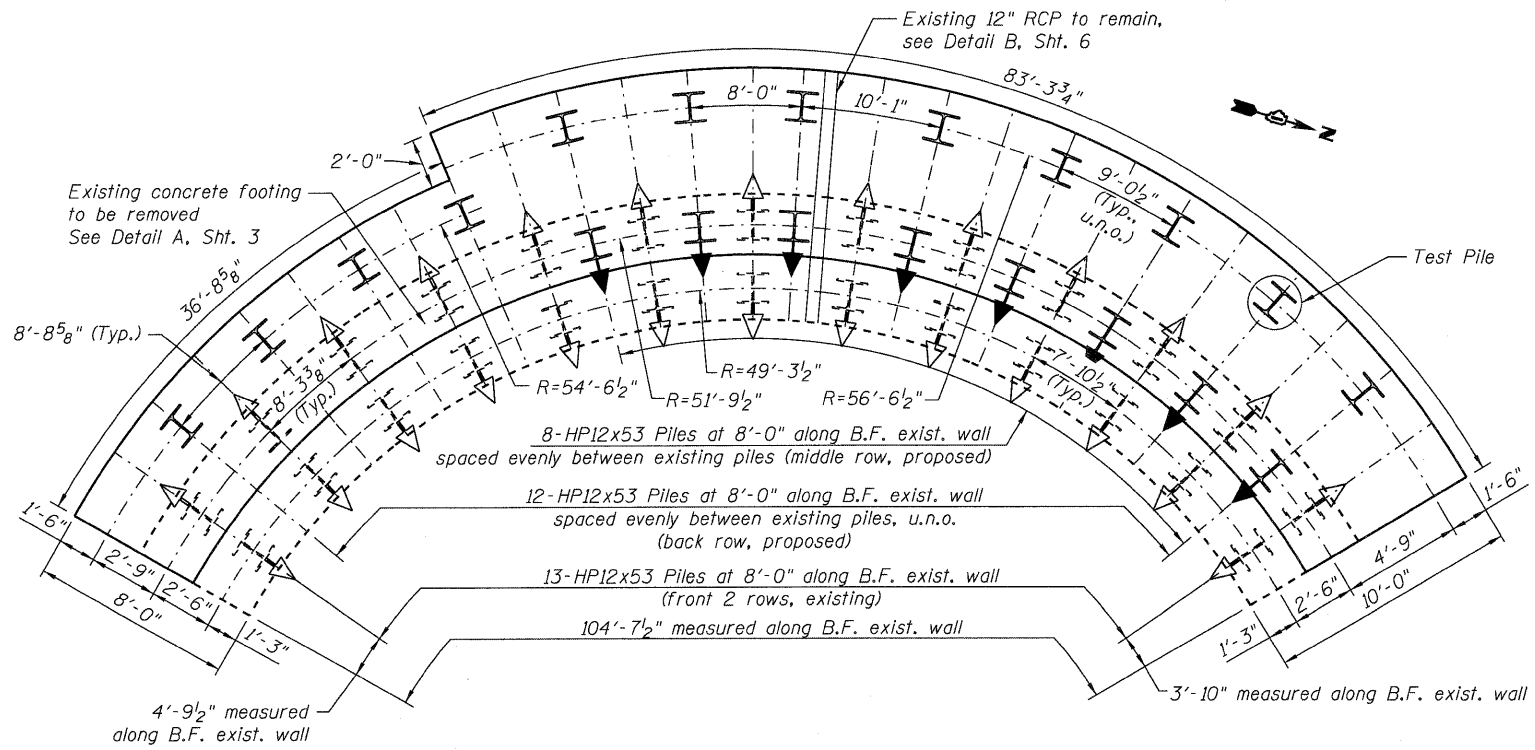
TYPICAL SECTION

For Reinforcement Layout, see Sheet 6.

* Backfill remainder of structure excavation and over excavation with same material specified for roadway embankment.



TYPICAL EXISTING WALL SECTION - REMOVAL



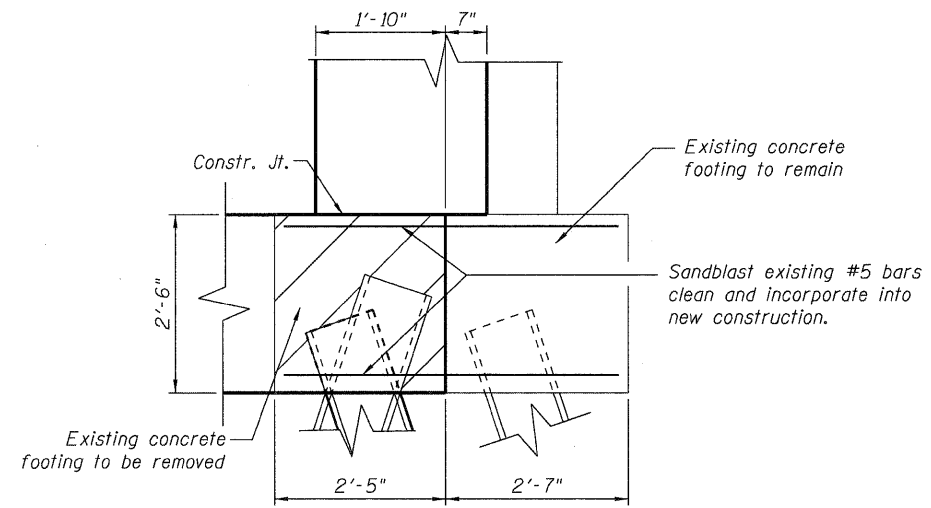
FOOTING PLAN

(Pile Layout)
For Reinforcement Layout, see Sheet 6.

PILE DATA

TYPE: Steel HP12x53
Nominal required bearing = 391 kips
Allowable resistance available = 110 kips
EST. LENGTH: 38 feet (vertical)
No. REQ'D: 20 (Includes one test pile)
I New Straight Pile (no batter)
II New Battered Pile
III Existing Battered Pile

NOTES:
Bars indicated thus 1 x 3-#5 etc. indicates 1 line of bars with 3 lengths per line.
For Sections D-D and E-E see Sheet 6.
For Bill of Material see Sheet 6.



DETAIL C

DESIGNED	PMH
CHECKED	KJH
DRAWN	PMH
CHECKED	KJH

**PLAN & ELEVATION
PANELS 20-24**

SHEET NO. 5 23 SHEETS	F.A.P. RTE. 330	SECTION 73 R-B	COUNTY COOK	TOTAL SHEETS 136	SHEET NO. 94
	CONTRACT NO. 60K64				
DATE: 12/17/10		ILLINOIS FED. AID PROJECT			

McDonough Associates Inc.
Engineers / Architects
130 East Randolph Street Chicago, Illinois 60601