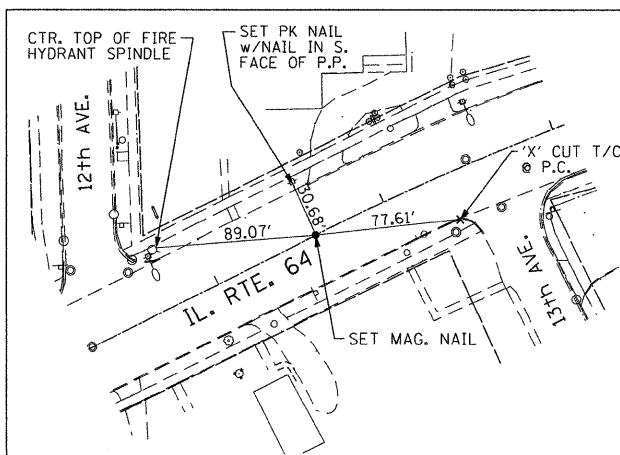
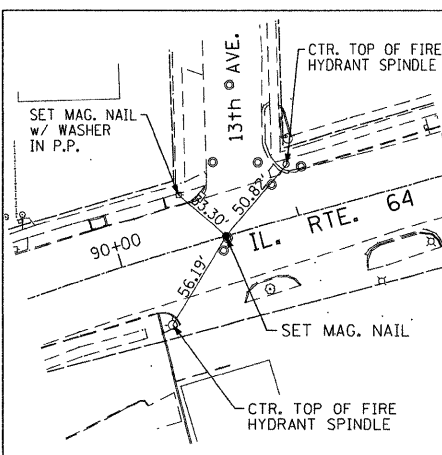


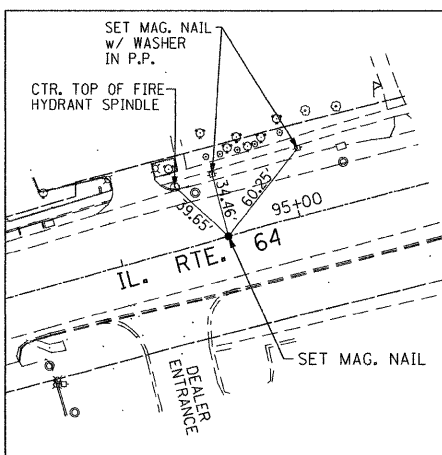
TIE #1
P.O.T. STA. 72+00.00
N 5973.3680
E 11914.1640
SURVEY MARKER TY 1



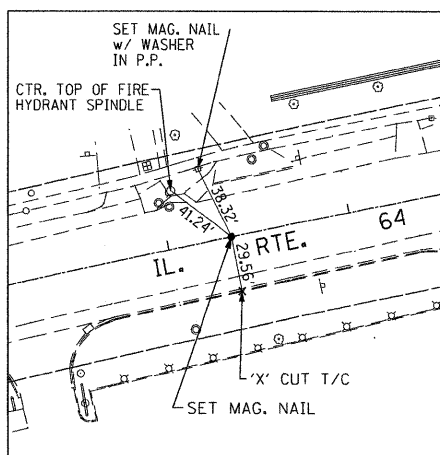
TIE #2
P.C. STA. 87+58.98
N 6655.2984
E 13316.0890
SURVEY MARKER TY 1



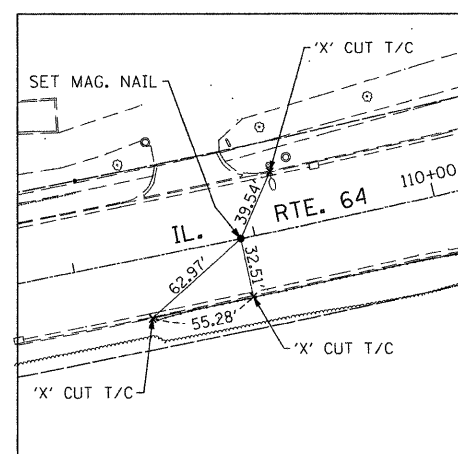
TIE #3
P.T. STA. 90+59.98
N 6759.8139
E 13596.7950
SURVEY MARKER TY 1



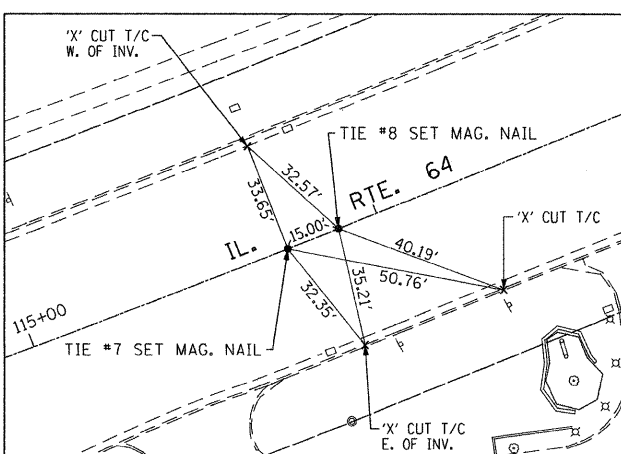
TIE #4
P.C. STA. 94+59.72
N 6862.8869
E 13984.0544
SURVEY MARKER TY 1



TIE #5
P.T. STA. 98+34.71
N 6945.5619
E 14349.5157
SURVEY MARKER TY 1

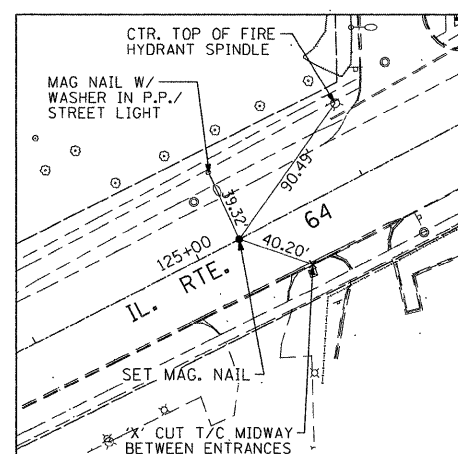


TIE #6
P.C. STA. 108+92.38
N 7146.3390
E 15388.1442
SURVEY MARKER TY 1

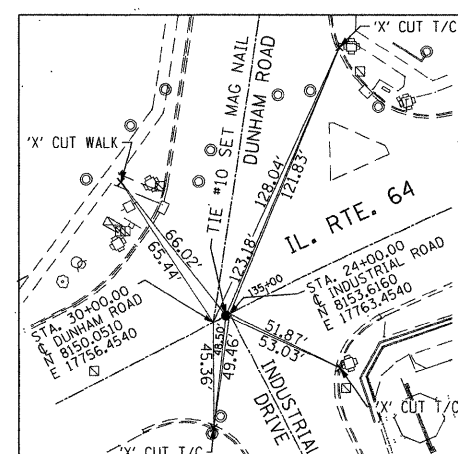


TIE #7
P.T. STA. 115+74.06
N 7334.2626
E 16042.4543
SURVEY MARKER TY 1

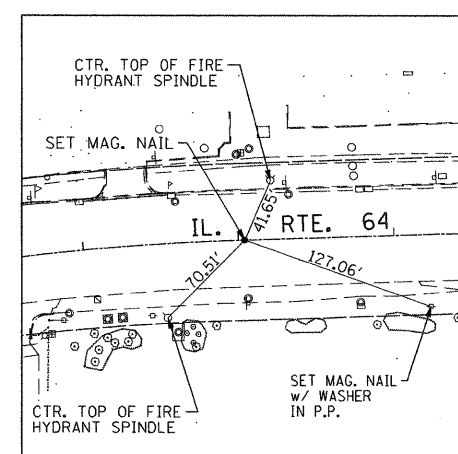
TIE #8
P.C. STA. 115+88.94
N 7339.6403
E 16056.3468
SURVEY MARKER TY 1



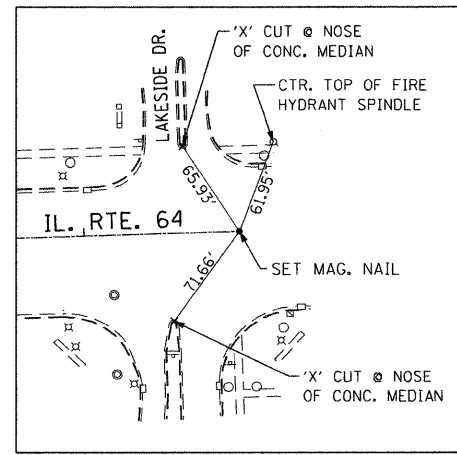
TIE #9
P.T. STA. 125+24.85
N 7720.6149
E 16910.5033
SURVEY MARKER TY 1



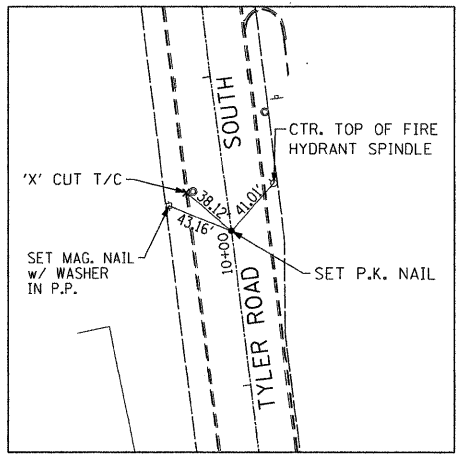
TIE #10
P.C. STA. 134+79.44
N 8152.8310
E 17761.9057
SURVEY MARKER TY 1



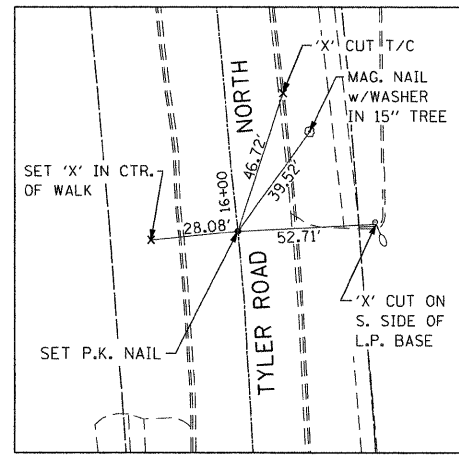
TIE #11
P.T. STA. 142+04.11
N 8371.0950
E 18484.8150
SURVEY MARKER TY 1



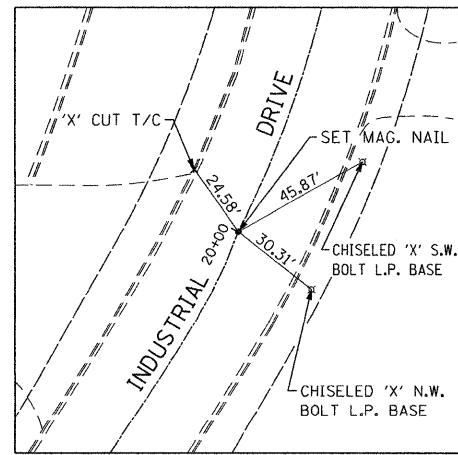
TIE #12
P.O.T. STA. 153+99.92
N 8353.9360
E 19654.4470
SURVEY MARKER TY 1



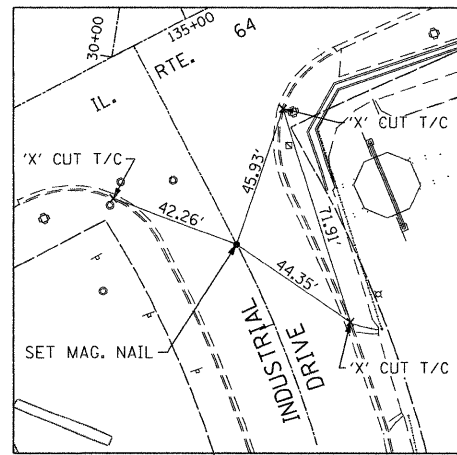
TIE #13
P.O.T. STA. 10+00.00
TYLER ROAD SOUTH
N 6978.0140
E 15918.3960



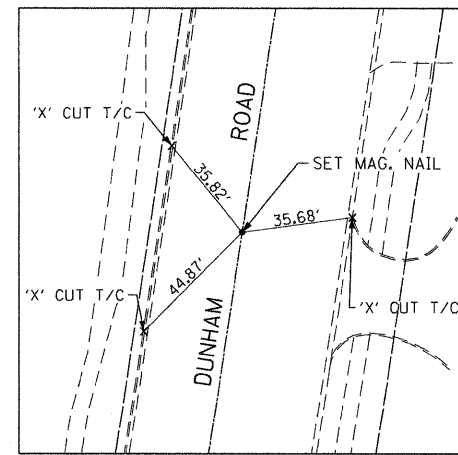
TIE #14
P.O.T. STA. 16+00.00
TYLER ROAD NORTH
N 7573.0340
E 15841.2480



TIE #15
P.C. STA. 20+00.00
INDUSTRIAL DRIVE
N 7773.4788
E 17794.4853

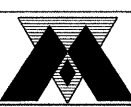


TIE #16
P.T. STA. 23+28.13
INDUSTRIAL DRIVE
N 8153.6160
E 17763.4540



TIE #17
P.O.T. STA. 37+00.00
DUNHAM ROAD
N 8841.2650
E 17867.0110

FILE NAME = P:\2009\MEP9806_Var-Vor_P\INT\CADD\W018_IL64\Shets\DI60L57-sh1-01.dgn-02-CR.dgn
 PLOT SCALE = 1/8" = 1'-0"
 USER NAME = Millennium Professional Services



200 22ND Street, Suite 216, Lombard, IL 60148
630.795.9110 voice, 630.839.2566 fax
www.mps-il.com
MILLENNIA PROFESSIONAL SERVICES

DESIGNED - CJD/TVN	REVISED -
DRAWN - CJD	REVISED -
CHECKED - TVN	REVISED -
DATE - 9/17/2010	REVISED -

**STATE OF ILLINOIS
DEPARTMENT OF TRANSPORTATION**

**ILLINOIS ROUTE 64
7TH AVENUE TO IL 59**

**ALIGNMENT PLAN & TIES
SECTION - I**

F.A.P. RTE. 307	SECTION 2010-072-DTR	COUNTY	TOTAL SHEETS 23	SHEET NO. 7
FED. ROAD DIST. NO. 1 ILLINOIS FED. AID PROJECT			CONTRACT NO. 60L57	

* KANE & DUPAGE AT-02

SCALE: SHEET NO. OF SHEETS STA. TO STA.

P:\2009\MEP9806_Var-Vor_P\INT\CADD\W018_IL64\Shets\DI60L57-sh1-01.dgn-02-CR.dgn