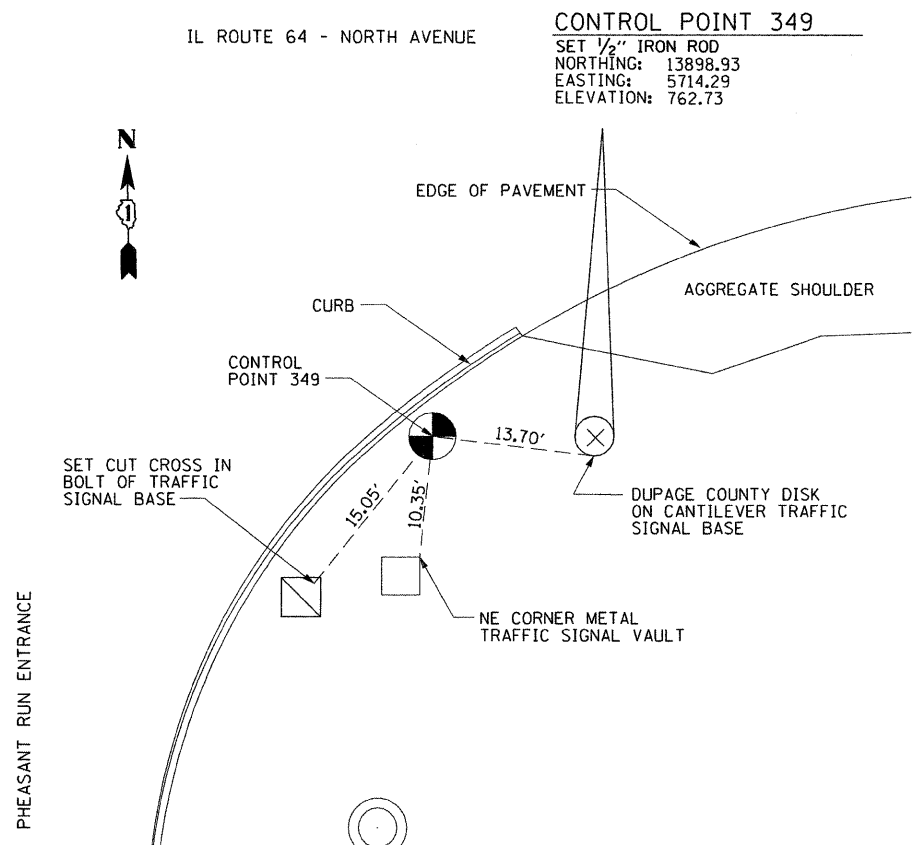
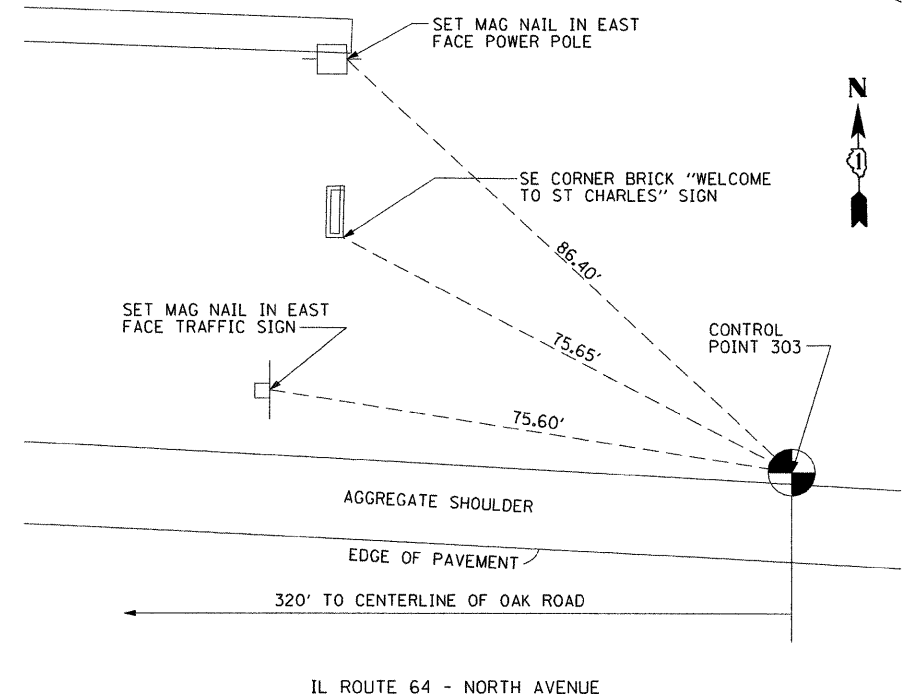


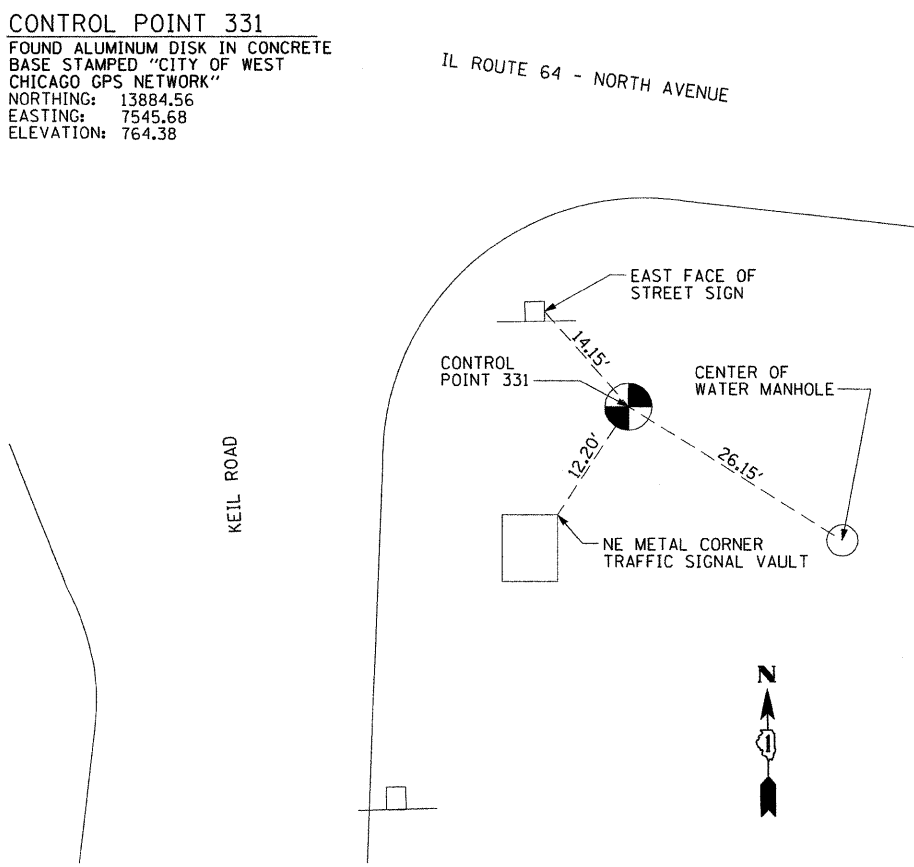
CONTROL POINT 348
 SET 1/2" IRON ROD
 NORTHING: 13946.76
 EASTING: 3434.05
 ELEVATION: 765.55



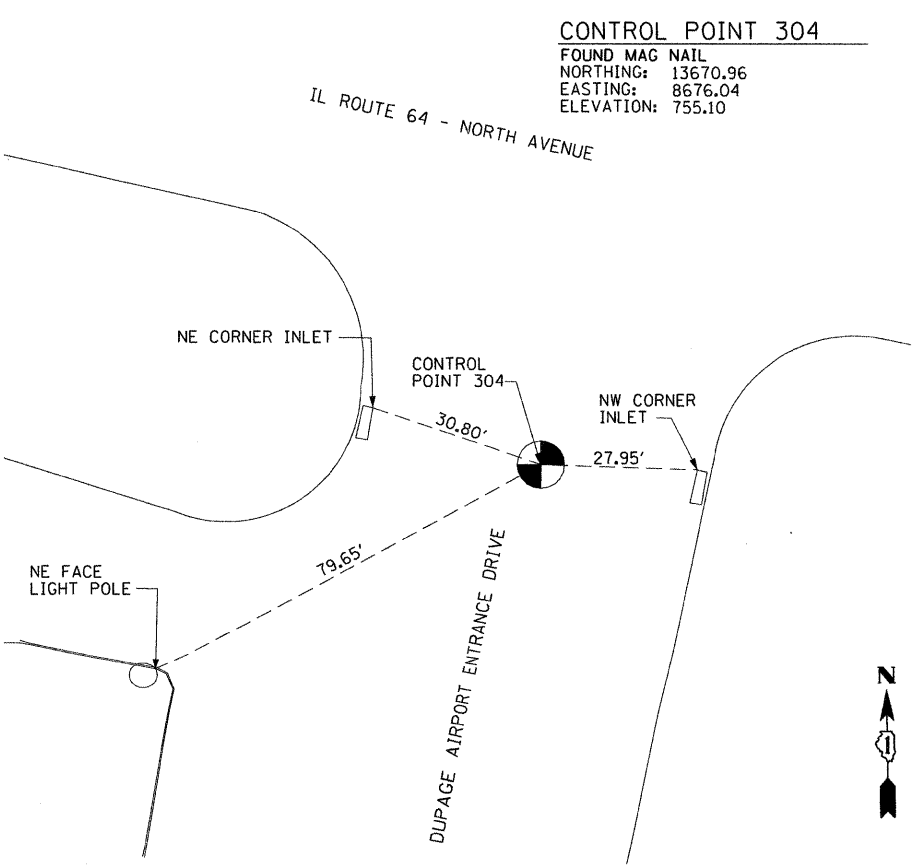
CONTROL POINT 349
 SET 1/2" IRON ROD
 NORTHING: 13898.93
 EASTING: 5714.29
 ELEVATION: 762.73



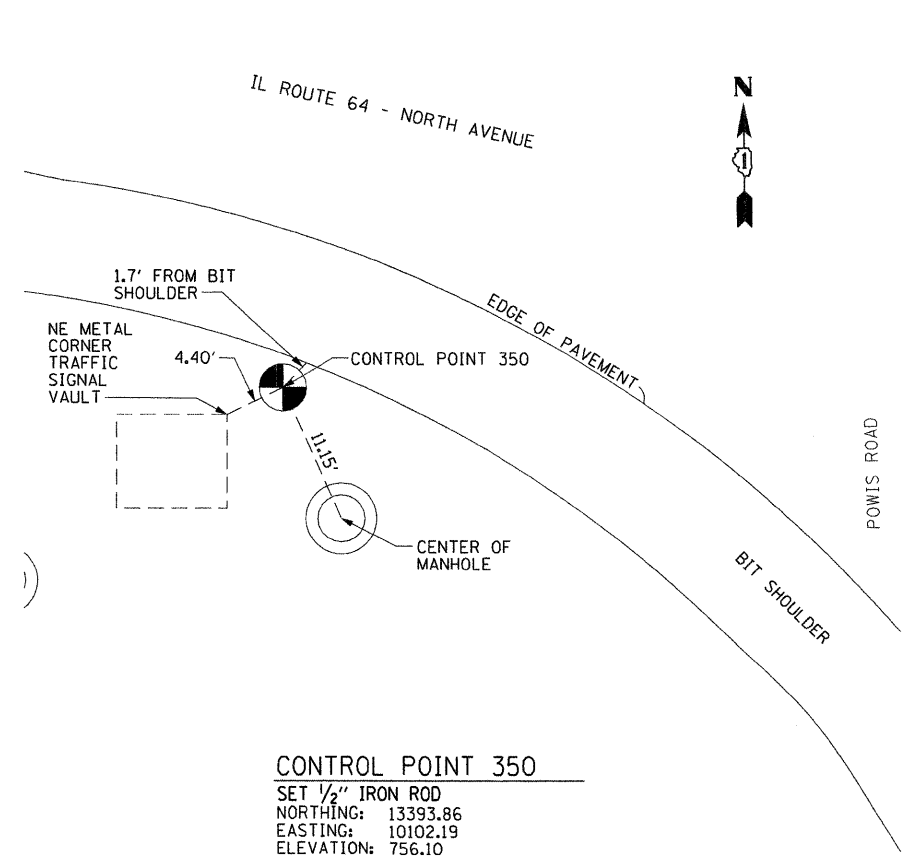
CONTROL POINT 303
 FOUND 5/8" IRON ROD
 NORTHING: 14006.50
 EASTING: 7126.61
 ELEVATION: 758.56



CONTROL POINT 331
 FOUND ALUMINUM DISK IN CONCRETE
 BASE STAMPED "CITY OF WEST
 CHICAGO GPS NETWORK"
 NORTHING: 13884.56
 EASTING: 7545.68
 ELEVATION: 764.38



CONTROL POINT 304
 FOUND MAG NAIL
 NORTHING: 13670.96
 EASTING: 8676.04
 ELEVATION: 755.10



CONTROL POINT 350
 SET 1/2" IRON ROD
 NORTHING: 13393.86
 EASTING: 10102.19
 ELEVATION: 756.10

FILE NAME = p:\2009\me09006-var-var-phu\cadd\vol18.1164\Shets\1616L57-sh-t-Align-05-AE-1.wdgn
 USER NAME = Millennia (Professional) Services

200 22ND Street, Suite 216, Lombard, IL 60148
 630.795.0110 voice, 630.839.2566 fax
 www.mps-il.com
MILLENNIA PROFESSIONAL SERVICES

| | |
|--------------------|-----------|
| DESIGNED - CJD/TVN | REVISED - |
| DRAWN - CJD | REVISED - |
| CHECKED - TVN | REVISED - |
| DATE - 10/27/2010 | REVISED - |

**STATE OF ILLINOIS
 DEPARTMENT OF TRANSPORTATION**

**ILLINOIS ROUTE 64
 7TH AVENUE TO IL 59**

SCALE: NTS SHEET NO. OF SHEETS STA. TO STA.

| | | | | |
|--------------------|----------------------|----------|-----------------|--------------|
| F.A.P. RTE. 307 | SECTION 2010-072-DTR | COUNTY * | TOTAL SHEETS 23 | SHEET NO. 10 |
| CONTRACT NO. 60L57 | | | | |

* KANE & DUPAGE **AT-05**

p:\2009\me09006-var-var-phu\cadd\vol18.1164\Shets\1616L57-sh-t-Align-05-AE-1.wdgn