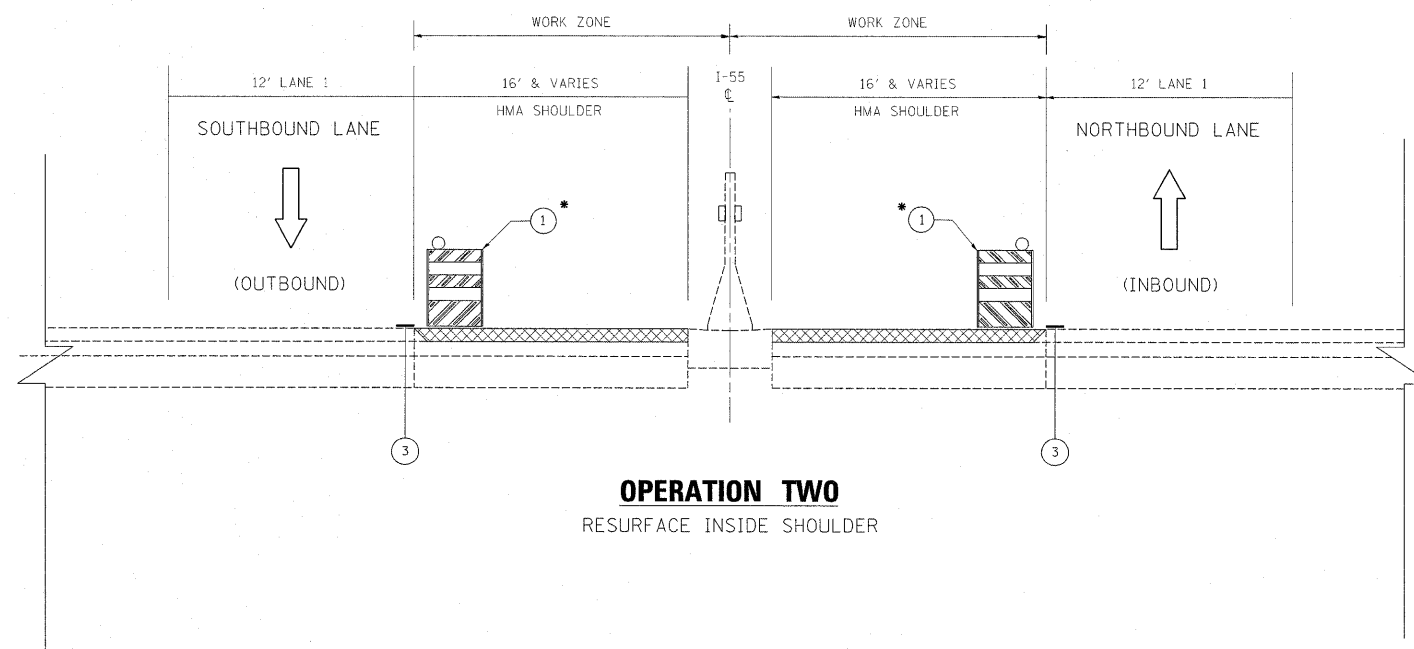


OPERATION ONE
MILL INSIDE SHOULDER



OPERATION TWO
RESURFACE INSIDE SHOULDER

STAGE I

PERFORM BARRIER WALL REPAIR AND PATCHING WORK USING "DISTRICT ONE FREEWAY STANDARD FOR SHOULDER CLOSURES AND PARTIAL RAMP CLOSURES". THE TEMPORARY SHOULDER CLOSURE WILL ONLY BE ALLOWED ON WEEKDAYS WITH THE TIME SPECIFIED AS DETAILED IN THE SPECIAL PROVISIONS FOR "KEEPING THE EXPRESSWAY OPEN TO TRAFFIC".

STAGE II

PERFORM MILLING, RESURFACING OPERATIONS, AND EDGE LINE PAVEMENT MARKING USING THE SUGGESTED TRAFFIC CONTROL AND PROTECTION STAGING TYPICAL SECTION AND "DISTRICT ONE FREEWAY STANDARD FOR SHOULDER CLOSURES AND PARTIAL RAMP CLOSURES". THE TEMPORARY SHOULDER CLOSURE WILL ONLY BE ALLOWED ON WEEKDAYS WITH THE TIME SPECIFIED AS DETAILED IN THE SPECIAL ROVISIONS FOR "KEEPING THE EXPRESSWAY OPEN TO TRAFFIC".

GENERAL NOTES - TRAFFIC CONTROL

THE CONTRACTOR SHALL PLACE AND MAINTAIN DRUMS WITH MONO-DIRECTIONAL STEADY BURNING LIGHTS AT 100 FEET C-C ON THE SHOULDER ADJACENT TO MILLED AREAS. DRUMS WILL REMAIN IN PLACE UNTIL THE PROPOSED SURFACE COURSE HAS BEEN PLACED AND EDGE LINES HAS BEEN INSTALLED.

AT THE END OF EACH NIGHTLY SHIFT, THE CONTRACTOR SHALL SWEEP THE PAVEMENT SURFACE CLEAN, PLACE TEMPORARY PAVEMENT MARKING AND REMOVE TRAFFIC CONTROL.

SINCE THIS IS AN EXPRESSWAY FACILITY, THE CONTRACTOR MAY HAVE CREWS WORKING IN THE NORTHBOUND AND SOUTHBOUND DIRECTIONS AT THE SAME TIME.

ALL DRAINAGE WORKS CAN BE ACCOMPLISHED WITH DAYTIME SHOULDER CLOSURES.

THE MILLING REQUIRED TO PLACE A TAPER (SEE DETAIL A) WILL BE INCLUDED IN THE COST OF HMA SURFACE REMOVAL, 2"

LEGEND

- ① DRUMS W/ STEADY BURN LIGHTS @ 100' C-C
- ② TEMPORARY PAVEMENT MARKING (TYPE III TAPE)
- ③ PERMANENT PAVEMENT MARKING
- ▨ HMA SURFACE REMOVAL
- ▩ PROPOSED HMA SURFACING

• SEE NOTE 1 OF GENERAL NOTES-TRAFFIC CONTROL

•• DRUMS SHALL NOT BE PLACED IN THE LANE WHICH IS OPEN TO TRAFFIC. THE CONTRACTOR SHALL USE ONE FOOT WIDE VERTICAL BARRICADES WITH STEADY BURN LIGHTS ALONG THE MILLING AND PAVING OPERATIONS. THE TYPE OF VERTICAL BARRICADES SHALL BE APPROVED IN WRITING BY THE ENGINEER PRIOR TO BEING USED ON THE PROJECT.

FILE NAME =	USER NAME = galbanjr	DESIGNED -	REVISED -	STATE OF ILLINOIS DEPARTMENT OF TRANSPORTATION	I-55 (EAST OF I-355 TO COUNTY LINE RD.) SUGGESTED TRAFFIC CONTROL AND PROTECTION PLAN	F.A.I. RTE.	SECTION	COUNTY	TOTAL SHEETS	SHEET NO.
cr:\pwwork\pwwork\galbanjr\2010\07\17\110-sh-t-1-plan.dgn		DRAWN -	REVISED -			55	2010-079-RS	COOK/DUPAGE	96	30
PLOT SCALE = 50.7684' / IN.		CHECKED -	REVISED -			CONTRACT NO. 60L67				
PLOT DATE = 1/3/2011		DATE -	REVISED -			ILLINOIS FED. AID PROJECT				
						SCALE:	SHEET NO.	OF	SHEETS	STA.