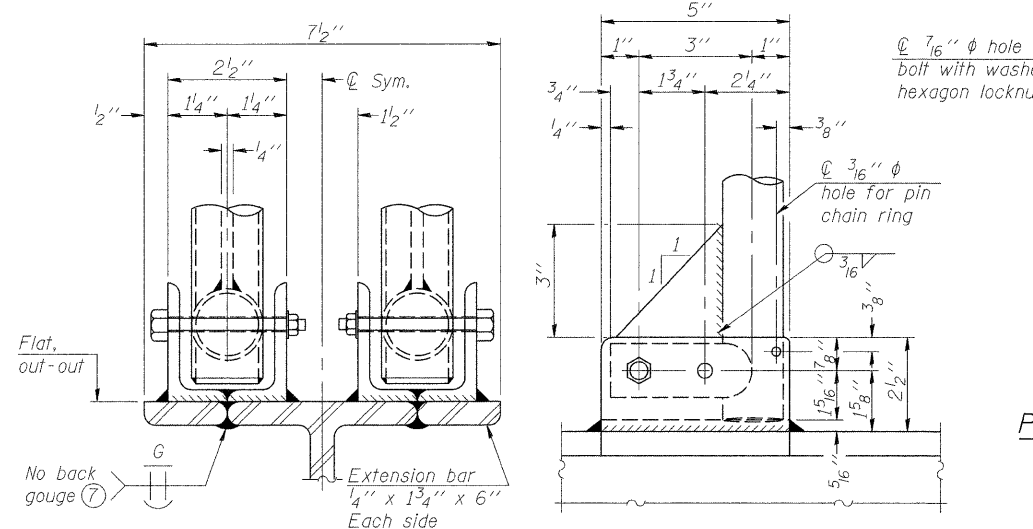
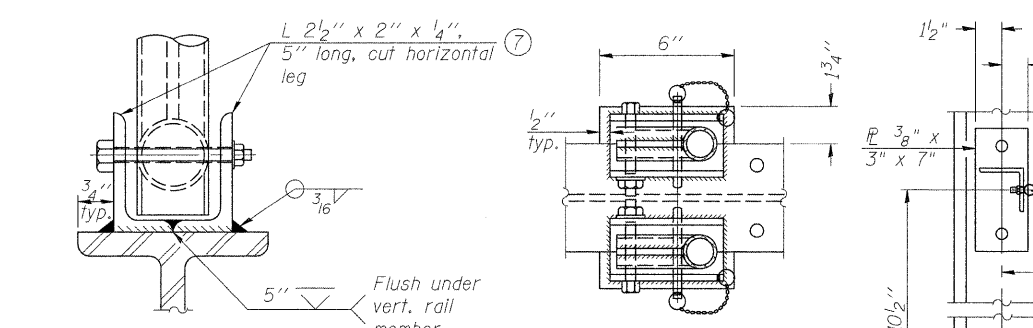


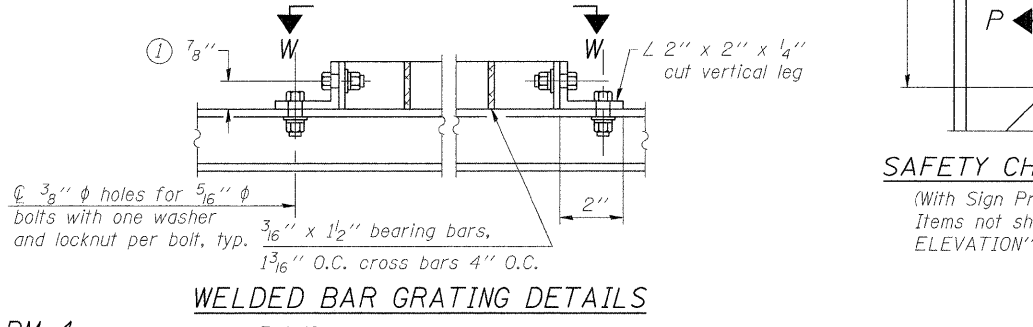
**SECTION F-F LIGHTING FIXTURE MOUNTS**  
(If required)



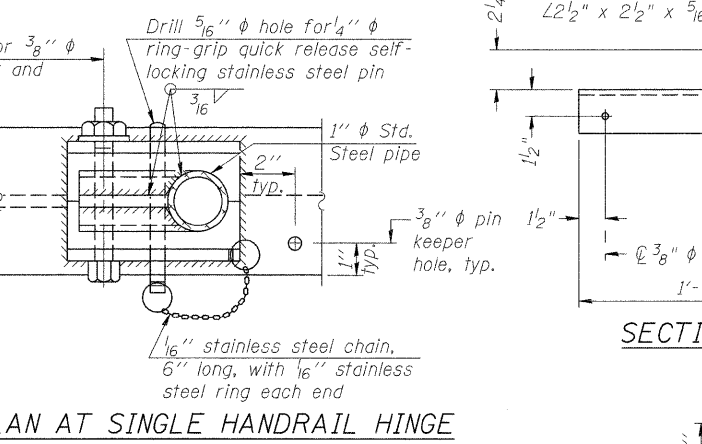
**SIDE ELEVATION DETAIL D HANDRAIL FRONT ELEVATION**



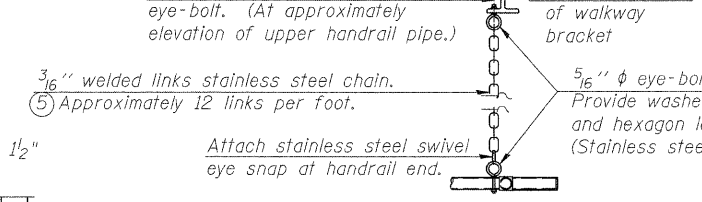
**ELEVATION AT HANDRAIL JOINT SIDE ELEVATION**



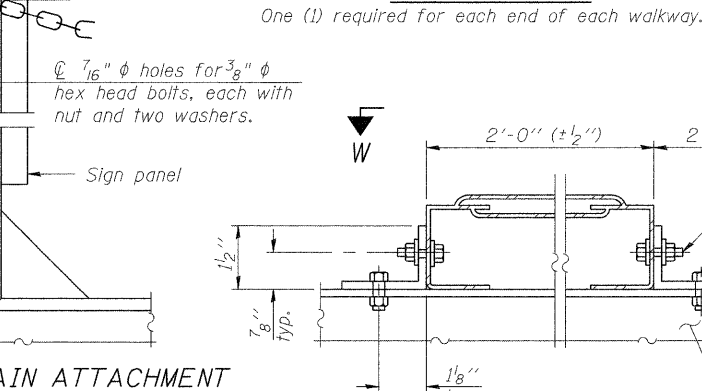
**FRONT ELEVATION PLAN AT HANDRAIL JOINT SAFETY CHAIN ATTACHMENT**



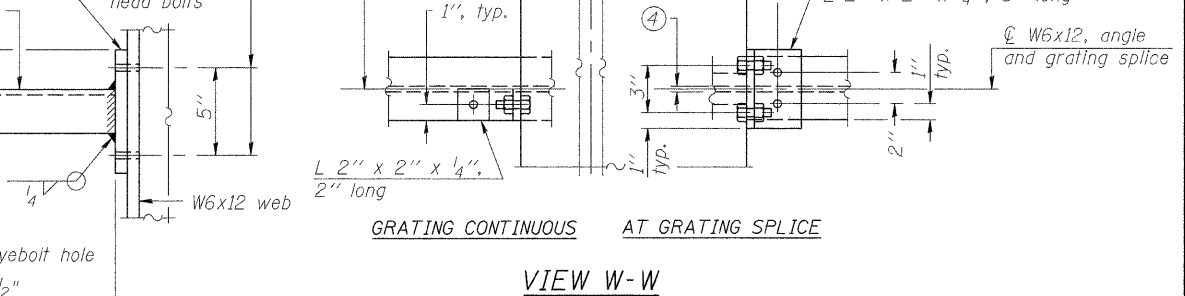
**PLAN AT SINGLE HANDRAIL HINGE DETAIL E**



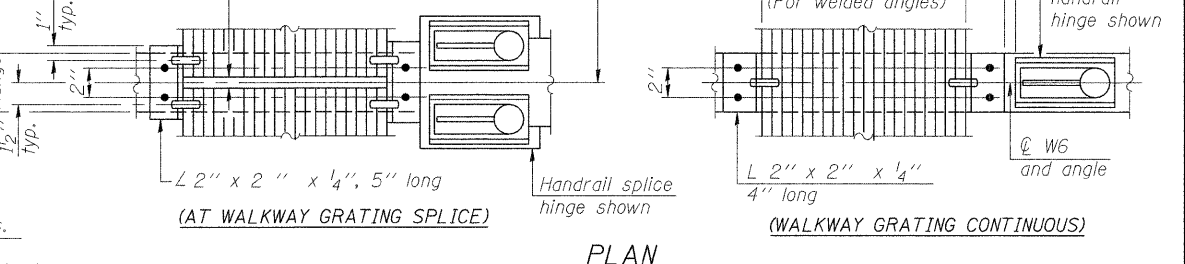
**SAFETY CHAIN**



**WALKWAY GRATING DETAILS**



**SECTION P-P VIEW W-W**



**GRATING CONTINUOUS AT GRATING SPLICE WALKWAY GRATING SPLICE WALKWAY GRATING CONTINUOUS**

- NOTES**
- Drilling holes in grating may be done in shop or field, based on Contractor's preference and subject to accurate alignment. Field drilled holes must be touched up with galvanized paint.
  - Horizontal rail member shall be continuous thru 1 1/4 inch diameter pipe. Provide 7/16 inch diameter hole in 1 1/4 inch diameter pipe for 3/8 inch diameter bolt. Field drill 7/16 inch diameter hole in horizontal rail member. Provide washer and locknut for bolt. (Use 5/16 inch diameter eyebolts in 7/16 inch diameter holes on top rail at ends only.)
  - Install standard force-fit end caps or weld 1/8 inch end plates with 1/8 inch c.f.w. and grind smooth. (All rail ends.)
  - 3/8 inch (± 1/4 inch) gap between grating panels at splice.
  - Chain to be type 304L stainless steel suitable for prolonged exterior exposure. Approximately 3'-6" long chain per location. Maximum sag with handrail erected = 4".
  - 1/8 inch x 1/2 inch x 2 inch welded to handrail posts to protect locations that contact grating.
  - Extrusions may be used in lieu of details shown, with approval by Engineer.
  - Field cut ends of light support channels shall be free of burrs or hazardous projections and coated with zinc-rich primer or equivalent.