

STATE OF ILLINOIS
DEPARTMENT OF TRANSPORTATION
DIVISION OF HIGHWAYS

**PROPOSED
HIGHWAY PLANS**

FAP ROUTE 303 (IL 173)
SECTION 2010-116-1
DEEP LAKE ROAD TO W. OF HUNT CLUB ROAD
RESURFACING, RUMBLE STRIP, PAVEMENT
MARKING, AND SIGNING
PROJECT: *HSIP-0303(051)*
LAKE COUNTY
C-91-122-11

F.A.P. RTE.	SECTION	COUNTY	TOTAL SHEETS	SHEET NO.
303	2010-116-1	LAKE	* 23	1

ILLINOIS CONTRACT NO. 60M50

* + 1 = 24

D-91-122-11

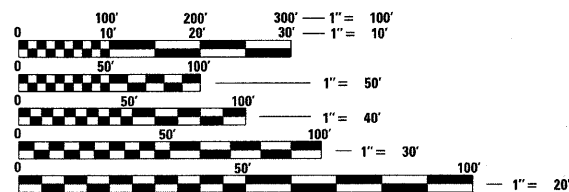


FOR INDEX OF SHEETS, SEE SHEET NO. 2

TRAFFIC DATA

EXISTING ADT = 15,500 (2007)
SPEED LIMIT = 45 - 55 MPH

THE IMPROVEMENT IS LOCATED IN
VILLAGE OF ANITCOH AND
NEWPORT TOWNSHIP

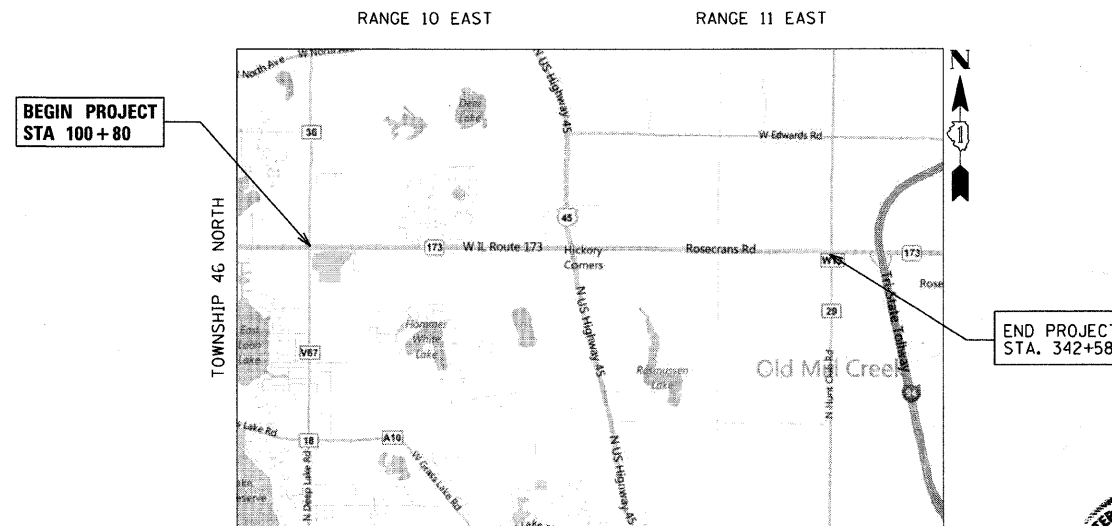


FULL SIZE PLANS HAVE BEEN PREPARED USING STANDARD ENGINEERING SCALES. REDUCED SIZED PLANS WILL NOT CONFORM TO STANDARD SCALES. IN MAKING MEASUREMENTS ON REDUCED PLANS, THE ABOVE SCALES MAY BE USED.

J.U.L.I.E.
JOINT UTILITY LOCATION INFORMATION FOR EXCAVATION
1-800-892-0123
OR 811

PROJECT ENGINEER: PETER JOHNSTON (GRAEF) 773-399-0112
PROJECT MANAGER: KEN ENG (IDOT) 847-705-4247

CONTRACT NO. 60M50



ANTIOCH AND NEWPORT TOWNSHIPS
GROSS & NET LENGTH = 24,178 FT. = 4.58 MILES

Peter Johnston
12-20-10
PETER M. JOHNSTON
062-047647
REGISTERED PROFESSIONAL ENGINEER OF ILLINOIS
Expires 11-30-11

STATE OF ILLINOIS
DEPARTMENT OF TRANSPORTATION
DIVISION OF HIGHWAYS

SUBMITTED December 20, 2010
Dennis M. O'Keefe
DEPUTY DIRECTOR OF HIGHWAYS, REGION ENGINEER

February 4, 2011
Scott E. Stitt, P.E.
acting ENGINEER OF DESIGN AND ENVIRONMENT

February 4, 2011
Christine M. Reed
DIRECTOR OF HIGHWAYS, CHIEF ENGINEER

PRINTED BY THE AUTHORITY
OF THE STATE OF ILLINOIS

GRAEF 8501 W. Higgins Road; Suite 280
Chicago, Illinois 60631
(773) 399-0112

INDEX OF SHEETS

HIGHWAY STANDARDS

GENERAL NOTES

SHEET NO.	DESCRIPTION
1	COVER SHEET
2	INDEX, GENERAL NOTES AND HIGHWAY STANDARDS
3	SUMMARY OF QUANTITIES
4	SCHEDULE OF QUANTITIES
5	TYPICAL SECTIONS
6-14	ROADWAY AND PAVEMENT MARKING PLANS
15	TRAFFIC SIGNAL DETECTOR LOOP REPLACEMENT
16	RUMBLE STRIPE DETAILS
17	BUTT JOINTS AND HMA TAPER (BD32)
18	TRAFFIC CONTROL AND PROTECTION FOR SIDEROADS, INTERSECTIONS AND DRIVEWAYS (TC10)
19	RAISED REFLECTIVE PAVEMENT MARKERS (SNOW PLOW RESISTANT) (TC11)
20	DISTRICT ONE TYPICAL PAVEMENT MARKINGS (TC13)
21	TRAFFIC CONTROL AND PROTECTION AT TURN BAYS (TO REMAIN OPEN TO TRAFFIC) (TC14)
21a	PAVEMENT MARKINGS LETTERS AND SYMBOLS FOR TRAFFIC STAGING (TC16)
22	ARTERIAL ROAD INFORMATION SIGN (TC22)
23	DETECTOR LOOP INSTALLATION DETAIL FOR ROADWAY RESURFACING (TS07)

STD. NO.	TITLE
442201-03	CLASS C AND D PATCHES
630001-09	STEEL PLATE BEAM GUARDRAIL
630301-05	SHOULDER WIDENING FOR TYPE 1 (SPECIAL) GUARDRAIL TERMINALS
635006-03	REFLECTOR AND TERMINAL MARKER PLACEMENT
635011-02	REFLECTOR MARKER AND MOUNTING DETAILS
701006-03	OFF-ROAD OPERATIONS, 2L, 2W, 15' (4.5 m) TO 24" (600 mm) FROM PAVEMENT EDGE
701011-02	OFF-ROAD MOVING OPERATIONS, 2L, 2W, DAY ONLY
701301-04	LANE CLOSURE, 2L, 2W, SHORT TIME OPERATIONS
701306-03	LANE CLOSURE, 2L, 2W, SLOW MOVING OPERATIONS DAY ONLY, FOR SPEEDS ≥ 45 MPH
701311-03	LANE CLOSURE, 2L, 2W, MOVING OPERATIONS - DAY ONLY
701336-06	LANE CLOSURE, 2L, 2W, WORK AREAS IN SERIES, FOR SPEEDS ≥ 45 MPH
701701-07	URBAN LANE CLOSURE, MULTILANE, INTERSECTION
701901-01	TRAFFIC CONTROL DEVICES
720001-01	SIGN PANEL MOUNTING DETAILS
720006-02	SIGN PANEL ERECTION DETAILS
728001-01	TELESCOPING STEEL SIGN SUPPORT
780001-02	TYPICAL PAVEMENT MARKINGS

- BEFORE STARTING ANY EXCAVATION, THE CONTRACTOR SHALL CALL "J.U.L.I.E." AT 800-892-0123 FOR FIELD LOCATIONS OF BURIED ELECTRIC, TELEPHONE AND GAS FACILITIES. (48 HOUR NOTIFICATION IS REQUIRED).
- THE CONTRACTOR SHALL COORDINATE CONSTRUCTION ACTIVITIES WITH UTILITY COMPANIES.
- THE CONTRACTOR WILL NOT BE ALLOWED TO SET UP A YARD OR FIELD OFFICE ON STATE PROPERTY WITHOUT WRITTEN PERMISSION FROM THE DEPARTMENT.
- WHEN ARTIFICIAL LIGHTING IS USED IN NIGHT OPERATIONS THE CONTRACTOR SHALL EXERCISE THE UTMOST PRECAUTIONS IN PREVENTING ADVERSE VISIBILITY TO THE MOTORING PUBLIC AND ADJOINING RESIDENTIAL AREAS.
- WHEN MILLED PAVEMENT IS OPEN TO TRAFFIC THE MAXIMUM GRADE DIFFERENTIAL BETWEEN PASSES OF THE MILLING MACHINE SHALL NOT EXCEED 1 1/2 INCHES (40 MM) WHERE THE SPEED LIMIT IS 45 MPH (80 KM/H) OR LESS AND 1 INCH (25 MM) WHERE THE SPEED LIMIT IS GREATER THAN 45 MPH (80 KM/H). WITH WRITTEN APPROVAL FROM THE ENGINEER, A MAXIMUM GRADE DIFFERENTIAL OF 3 INCHES (75 MM) MAY BE ALLOWED IF THE EDGE OF THE MILLING IS SLOPED A MINIMUM 1:3 (V:H).
- BUTT JOINTS WILL BE INSTALLED AT THE ENDS OF ALL RESURFACING (WHERE RESURFACING MEETS EXISTING PAVEMENT), IN ACCORDANCE WITH THE "BUTT JOINT AND HMA TAPER DETAILS" SHEET INCLUDED IN THE PLANS, UNLESS OTHERWISE SPECIFIED.
- THE CONTRACTOR SHALL CONTACT THE TRAFFIC CONTROL SUPERVISOR AT (847) 705-4470 A MINIMUM 72 HOURS IN ADVANCE OF BEGINNING WORK.
- THE RESIDENT ENGINEER SHALL CONTACT DEBBIE HANLON, AREA TRAFFIC FIELD ENGINEER, AT 847-438-2300 AT LEAST (2) WEEKS PRIOR TO PLACING PERMANENT PAVEMENT MARKINGS.
- BEFORE BEGINNING ANY WORK, THE CONTRACTOR SHALL RETAIN AND RECORD FOR FUTURE REFERENCE, ALL EXISTING PAVEMENT MARKING LINES (AND RAISED REFLECTIVE PAVEMENT MARKERS) IN ORDER THAT THESE LOCATIONS CAN BE REESTABLISHED FOR STRIPING, EXACT LOCATIONS OF ALL PAVEMENT MARKINGS SHALL BE AS DIRECTED BY THE ENGINEER.
- ALL PAVEMENT PATCHING LOCATIONS WILL BE DETERMINED IN THE FIELD BY THE ENGINEER.
- ALL HMA PAVEMENT PATCHING SHALL BE CLASS D.
- THE CONTRACTOR SHALL BE REQUIRED TO PROVIDE ACCESS TO ABUTTING PROPERTY AT ALL TIMES DURING THE CONSTRUCTION OF THIS PROJECT.
- IT SHALL BE THE CONTACTOR'S RESPONSIBILITY TO VERIFY ALL DIMENSIONS AND CONDITIONS EXISTING IN THE FIELD PRIOR TO CONSTRUCTION AND ORDERING OF MATERIALS.
- LAKE COUNTY WILL BE CONSTRUCTING IMPROVEMENTS TO HUNT CLUB ROAD. THE CONTRACTOR SHALL COORDINATE CONSTRUCTION ACTIVITIES & SCHEDULE WITH PROPOSED DETOUR ON IL 173 BETWEEN US 45 TO HUNT CLUB ROAD AS PART OF THIS CONTRACT. THE RESIDENT ENGINEER FOR CONTRACT 63457 IS PETE TOROLA WITH THE LAKE COUNTY DOT, AND CAN BE REACHED AT (847) 377-7400 OR PTOROLA@LAKECOUNTYIL.GOV

1-24-2011

FILE NAME =	USER NAME = .USER.	DESIGNED - EF	REVISED -	STATE OF ILLINOIS DEPARTMENT OF TRANSPORTATION	IL 173 - DEEP LAKE ROAD TO W. OF HUNT CLUB ROAD INDEX OF SHEETS, HIGHWAY STANDARDS, AND GENERAL NOTES		F.A.P. RTE. 303	SECTION 2010-116-1	COUNTY LAKE	TOTAL SHEETS 23	SHEET NO. 2	
#FILE#		DRAWN - EF	REVISED -		SCALE: 50	SHEET NO. 1 OF 1 SHEETS	STA.	TO STA.	CONTRACT NO. 60M50			
		CHECKED - RS	REVISED -		ILLINOIS FED. AID PROJECT							
		DATE - 01-03-2011	REVISED -									

SUMMARY OF QUANTITIES

PAY ITEM NUMBER	DESCRIPTION	UNIT	URBAN			
			TOTAL QUANTITY	0005 RESURFACING	0021 SAFETY	0031 LANDSCAPING
20200600	EXCAVATING AND GRADING EXISTING SHOULDER	UNIT	2			2
21101615	TOPSOIL FURNISH AND PLACE, 4"	SQ YD	99			99
25000210	SEEDING, CLASS 2A	ACRE	0.02			0.02
25000400	NITROGEN FERTILIZER NUTRIENT	POUND	2			2
25000600	POTASSIUM FERTILIZER NUTRIENT	POUND	2			2
25100630	EROSION CONTROL BLANKET	SQ YD	99			99
40600200	BITUMINOUS MATERIALS (PRIME COAT)	TON	38	38		
40600300	AGGREGATE (PRIME COAT)	TON	190	190		
40600400	MIXTURE FOR CRACKS, JOINTS, AND FLANGEWAYS	TON	71	71		
40600895	CONSTRUCTING TEST STRIP	EACH	2	2		
40600982	HOT-MIX ASPHALT SURFACE REMOVAL - BUTT JOINT	SQ YD	133	133		
40603340	HOT-MIX ASPHALT SURFACE COURSE, MIX "D", N70	TON	3,987	3,987		
44000158	HOT-MIX ASPHALT SURFACE REMOVAL, 2 1/4"	SQ YD	47,461	47,461		
44201803	CLASS D PATCHES, TYPE II, 13 INCH	SQ YD	652	652		
44201807	CLASS D PATCHES, TYPE III, 13 INCH	SQ YD	20	20		
44201809	CLASS D PATCHES, TYPE IV, 13 INCH	SQ YD	120	120		
48101620	AGGREGATE SHOULDERS, TYPE B 10"	SQ YD	164		164	
48102100	AGGREGATE WEDGE SHOULDER, TYPE B	TON	738	738		
* 63000001	STEEL PLATE BEAM GUARD RAIL, TYPE A, 6 FOOT POSTS	FOOT	250		250	
* 63100167	TRAFFIC BARRIER TERMINAL, TYPE 1 (SPECIAL) TANGENT	EACH	2		2	
67000400	ENGINEER'S FIELD OFFICE, TYPE A	CAL MO	6	6		
67100100	MOBILIZATION	L SUM	1	1		
70100460	TRAFFIC CONTROL AND PROTECTION, STANDARD 701306	L SUM	1	1		
* 72000100	SIGN PANEL - TYPE 1	SQ FT	112		112	
* 72000200	SIGN PANEL - TYPE 2	SQ FT	104		104	
* 72400100	REMOVE SIGN PANEL ASSEMBLY - TYPE A	EACH	24		24	
* 72800100	TELESCOPING STEEL SIGN SUPPORT	FOOT	399		399	
70300100	SHORT TERM PAVEMENT MARKING	FOOT	11,691	11,691		
70300210	TEMPORARY PAVEMENT MARKING LETTERS AND SYMBOLS	SQ FT	946.4	946.4		
70300220	TEMPORARY PAVEMENT MARKING - LINE 4"	FOOT	110,907	110,907		
70300240	TEMPORARY PAVEMENT MARKING - LINE 6"	FOOT	3,655	3,655		
70300260	TEMPORARY PAVEMENT MARKING - LINE 12"	FOOT	1,308	1,308		
70300280	TEMPORARY PAVEMENT MARKING - LINE 24"	FOOT	414	414		
70301000	WORK ZONE PAVEMENT MARKING REMOVAL	SQ FT	3,897	3,897		
* 78000100	THERMOPLASTIC PAVEMENT MARKING - LETTERS AND SYMBOLS	SQ FT	473	473		
* 78000200	THERMOPLASTIC PAVEMENT MARKING - LINE 4"	FOOT	50,454	50,454		
* 78000400	THERMOPLASTIC PAVEMENT MARKING - LINE 6"	FOOT	1,028	1,028		
* 78000600	THERMOPLASTIC PAVEMENT MARKING - LINE 12"	FOOT	654	654		
* 78000650	THERMOPLASTIC PAVEMENT MARKING - LINE 24"	FOOT	207	207		
* 78200410	GUARDRAIL MARKERS, TYPE A	EACH	4		4	
* 78201000	TERMINAL MARKER-DIRECT APPLIED	EACH	2		2	
* 78100100	RAISED REFLECTIVE PAVEMENT MARKER	EACH	619	619		
78300100	PAVEMENT MARKING REMOVAL	SQ FT	5,031	5,031		
78300200	RAISED REFLECTIVE PAVEMENT MARKER REMOVAL	EACH	619	619		
* 88600600	DETECTOR LOOP REPLACEMENT	FOOT	794	794		
X2020110	GRADING AND SHAPING SHOULDERS	UNIT	198	198		
Δ X2503100	MOWING	UNIT	9	9		
X4060826	POLYMERIZED LEVELING BINDER (MACHINE METHOD), IL-4.75, N50	TON	1,993	1,993		
Z0030850	TEMPORARY INFORMATION SIGNING	SQ FT	308	308		
Z0055400	RUMBLE STRIP	FOOT	16,512	16,512		
21400100	GRADING AND SHAPING DITCHES	FEET	4300			4300
70100600	TRAFFIC CONTROL AND PROTECTION STANDARD 701306	L SUM	1	1		
X4025600	MANHOLES TO BE ADJUSTED (SPECIAL)	EACH	1	1		

*Specialty Items
Δ Non-participating

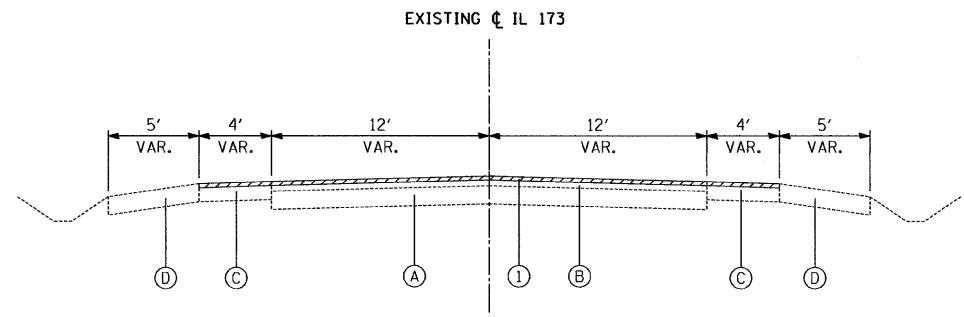
FILE NAME =	USER NAME = .USER.	DESIGNED - EF	REVISED -	STATE OF ILLINOIS DEPARTMENT OF TRANSPORTATION	IL 173 - DEEP LAKE ROAD TO W. OF HUNT CLUB ROAD SUMMARY OF QUANTITIES	F.A.P. RTE. 303	SECTION 2010-116-1	COUNTY LAKE	TOTAL SHEETS 23	SHEET NO. 3	Rev.	
FILEL	PLOT SCALE = 50' / IN.	DRAWN - EF	REVISED -			SCALE: 50	SHEET NO. 1 OF 1 SHEETS	STA.	TO STA.	CONTRACT NO. 60M50		
	PLOT DATE = 1/3/2011	CHECKED - RS	REVISED -			ILLINOIS FED. AID PROJECT						
	DATE - 01-03-2011	DATE -	REVISED -									

SCHEDULE OF QUANTITIES

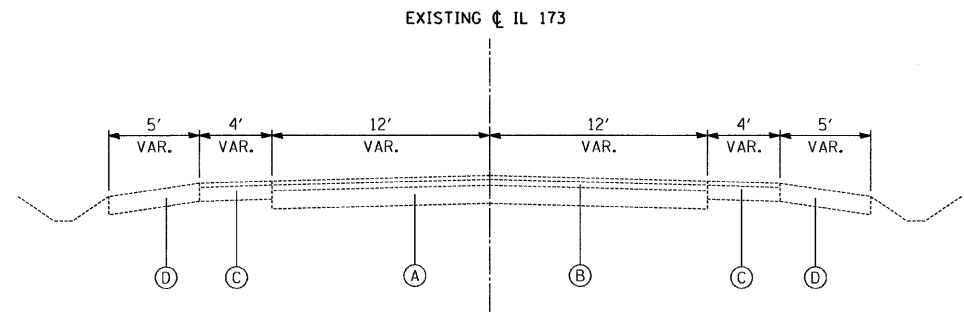
STATION	OFFSET		SIGN PANEL ASSEMBLY REMOVAL (EACH)	Sign	SIGN ID #	SIZE (inches)	SIGN PANEL TYPE 1 (SQ.FT.)	SIGN PANEL TYPE 2 (SQ.FT.)	TELESCOPING STEEL SIGN SUPPORT (FT.)
239+77	22.3	RT	1	NO PASSING ZONE	W14-3	64x48	0	21.3	28
269+39	28.0	RT	1	NO PASSING ZONE	W14-3	64x48	0	21.3	28
283+70	26.0	RT	1	CROSS ROAD	W2-1	36x36	9	0	15.25
				CRAWFORD RD	W16-8P	VAR x 9	3	0	
325+81	25.8	RT	1	Speed Zone Ahead	W3-5 (45)	36x36	9	0	14.5
331+80	24.5	RT	1	SPEED LIMIT 45	R2-1	30x36	7.5	0	13
335+74	30.2	RT	1	Do Not Pass	R4-1	24x30	5	0	12.5
331+66	27.4	LT	1	SPEED LIMIT 55	R2-1	30x36	7.5	0	13
298+90	23.7	LT	1	CROSS ROAD	W2-1	36x36	9	0	15.25
				CRAWFORD RD	W16-8P	VAR x 9	3	0	
277+91	26.6	LT	1	NO PASSING ZONE	W14-3	64x48	0	21.3	28
247+46	27.8	LT	1	NO PASSING ZONE	W14-3	64x48	0	21.3	28
224+02	35.5	LT	1	DO NOT DRIVE ON SHOULDER	R4-17	36x48	0	12	14
189+23	34.6	LT	1	NO PASSING ZONE	W14-3	64x48	0	21.3	28
174+76	33.7	LT	1	ADVANCE TRAFFIC CONTROL	W3-3	30x30	6.25	0	14
				SAVAGE RD AND DEERCREST DR	W16-8aP	30x15	3.125	0	
126+46	27.4	LT	1	Do Not Pass	R4-1	24x30	5	0	12.5
122+58	26.7	LT	1	SPEED LIMIT 50	R2-1	30x36	7.5	0	13
108+62	24.3	LT	1	SPEED LIMIT 45	R2-1	30x36	7.5	0	13
106+20	27.2	RT	1	SPEED LIMIT 50	R2-1	30x36	7.5	0	13
116+58	25.7	RT	1	Do Not Pass	R4-1	24x30	5	0	12.5
122+52	33.0	RT	1	SPEED LIMIT 55	R2-1	30x36	7.5	0	13
153+62	29.0	RT	1	Do Not Pass	R4-1	24x30	0	0	0
159+58	27.7	RT	1	ADVANCE TRAFFIC CONTROL	W3-3	30x30	6.25	0	14
				SAVAGE RD AND DEERCREST DR	W16-8aP	30x15	3.125	0	
208+89	24.0	RT	1	NO PASSING ZONE	W14-3	64x48	0	21.3	28
219+55	35.8	RT	1	DO NOT DRIVE ON SHOULDER	R4-17	36x48	0	12	14
220+74	34.5	RT	1	DO NOT DRIVE ON SHOULDER	R4-17	36x48	0	12	14

1-24-2011

FILE NAME =	USER NAME = .USER.	DESIGNED - EF	REVISED -	STATE OF ILLINOIS DEPARTMENT OF TRANSPORTATION	IL 173 - DEEP LAKE ROAD TO W. OF HUNT CLUB ROAD SCHEDULE OF QUANTITIES	F.A.P. RTE.	SECTION	COUNTY	TOTAL SHEETS	SHEET NO.	
*FILE#		DRAWN - EF	REVISED -			303	2010-116-1	LAKE	23	4	
PLOT SCALE = 50' / IN.		CHECKED - RS	REVISED -			CONTRACT NO. 60M50					
PLOT DATE = 1/24/2011		DATE - 01-03-2011	REVISED -			SCALE: 50	SHEET NO. 1 OF 1 SHEETS	STA.	TO STA.	ILLINOIS FED. AID PROJECT	

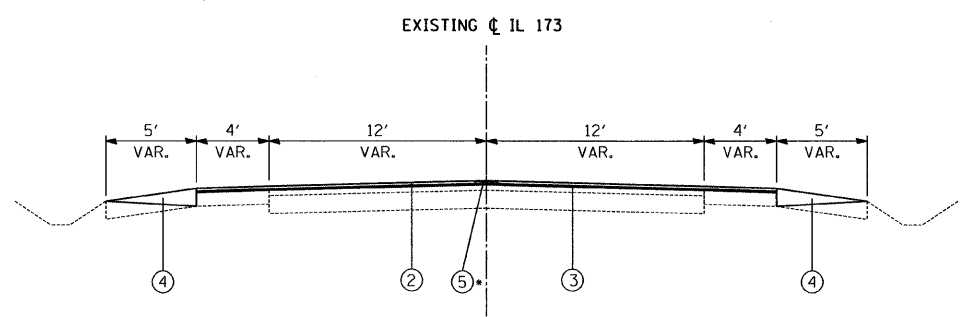


EXISTING TYPICAL SECTION
STA. 9+53 TO STA. 214+20

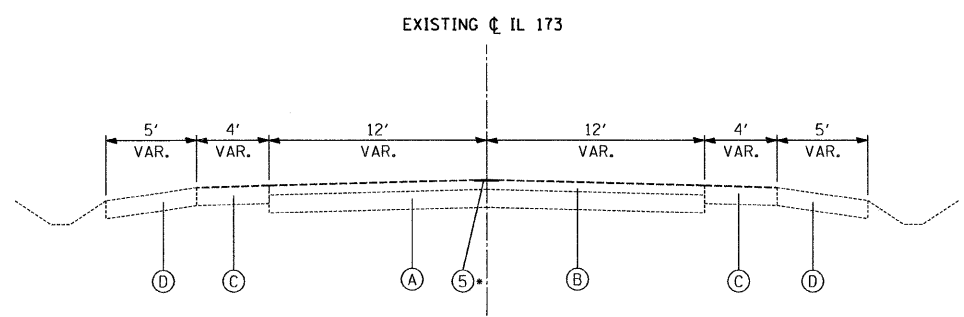


EXISTING TYPICAL SECTION
STA. 228+56 TO STA. 334+62

- EXISTING CONDITIONS:**
- (A) PCC BASE COURSE, ±10"
 - (B) HOT-MIX ASPHALT SURFACE COURSE, 5 1/4"
 - (C) HOT-MIX ASPHALT SHOULDER
 - (D) AGGREGATE SHOULDER
 - ITEMS TO BE REMOVED



PROPOSED TYPICAL SECTION
STA. 9+53 TO STA. 214+20



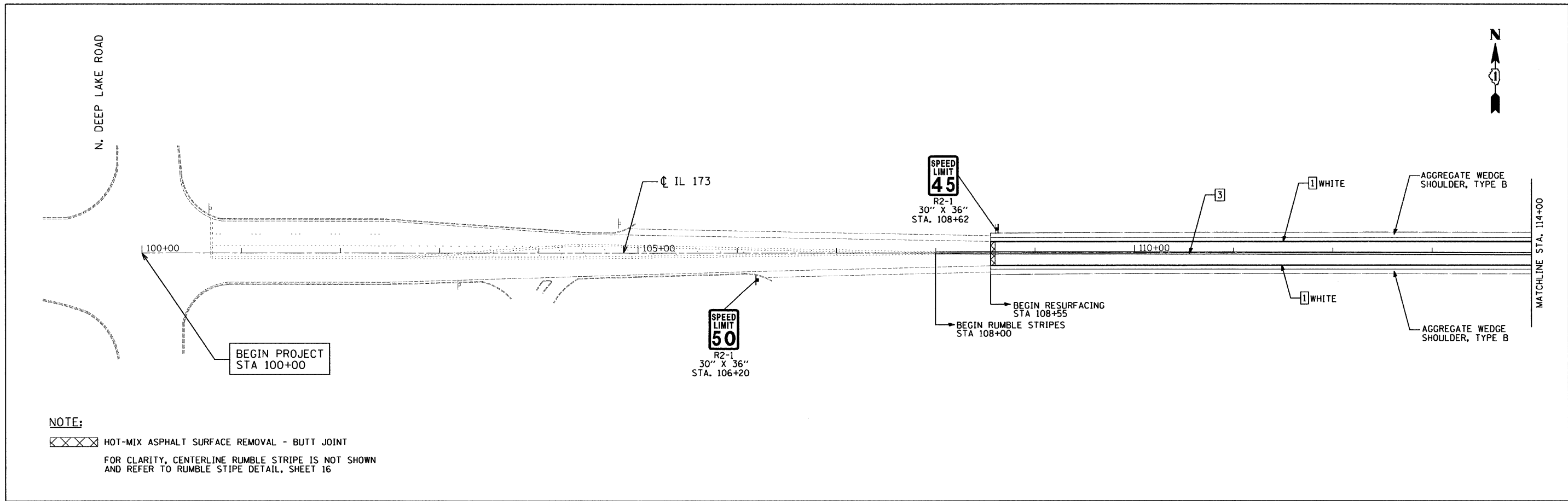
PROPOSED TYPICAL SECTION
STA. 228+56 TO STA. 334+62

- PROPOSED IMPROVEMENTS:**
- (1) HOT-MIX ASPHALT SURFACE REMOVAL, 2 1/4"
 - (2) HOT-MIX ASPHALT SURFACE COURSE, MIX "D" N70, 1 1/2"
 - (3) POLYMERIZED LEVELING BINDER (MACHINE METHOD), IL 4.75, N50, 3/4"
 - (4) AGGREGATE WEDGE SHOULDER, TYPE B
 - (5) CENTERLINE RUMBLE STRIPES
• REFER TO RUMBLE STRIPE DETAILS, SHEET 16

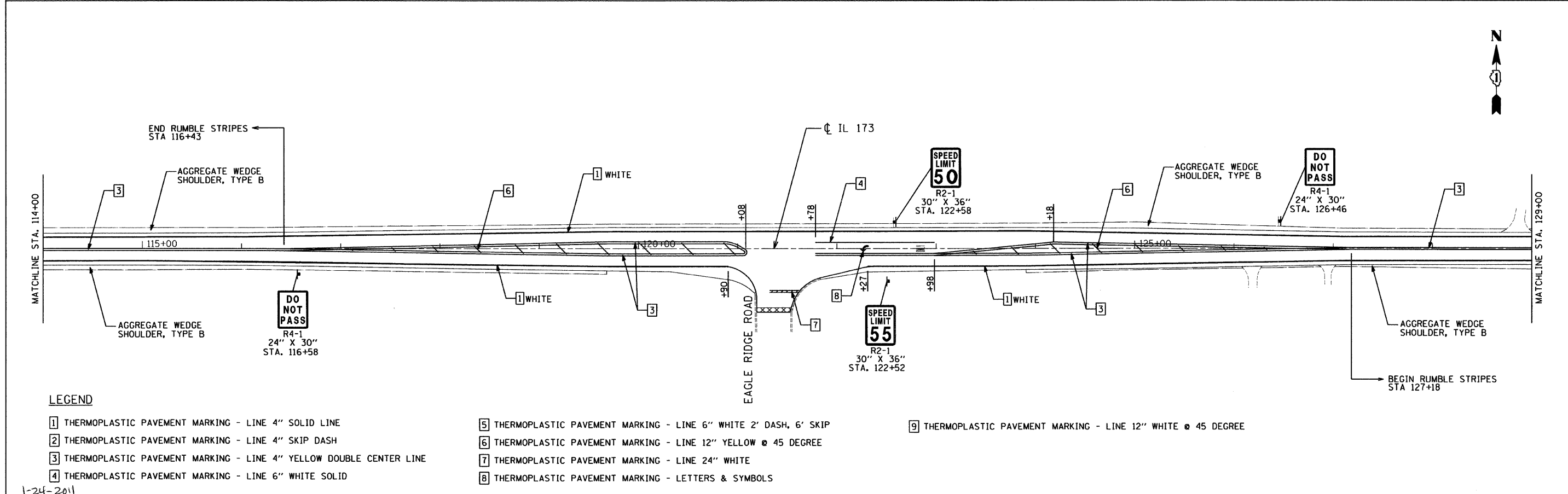
*CONTRACTOR SHALL MILL FIRST BEFORE PATCHING

HOT-MIX ASPHALT MIXTURE REQUIREMENTS	
MIXTURE TYPE	AIR VOIDS @ Ndes
HOT-MIX ASPHALT SURFACE COURSE, MIX "D", N70 (IL 9.5mm)	4% @ 70 GYR
POLYMERIZED LEVELING BINDER (MACHINE METHOD), IL 4.75, N50	4% @ 50 GYR
CLASS D PATCHES (HMA BINDER IL 19mm) (13 INCHES) (IN FOUR LIFTS)	4% @ 70 GYR

THE UNIT WEIGHT USED TO CALCULATE ALL HOT-MIX ASPHALT SURFACE MIXTURE A IS 112 LBS/SQ YD/IN.
THE "AC TYPE" FOR POLYMERIZED HMA MIXES SHALL BE "SBS/SBR PG 70-22" AND FOR NON-POLYMERIZED HMA THE "AC TYPE" SHALL BE "PG 64-22" UNLESS MODIFIED BY DISTRICT ONE SPECIAL PROVISIONS.
FOR "PERCENT OF RAP" SEE DISTRICT ONE SPECIAL PROVISIONS.

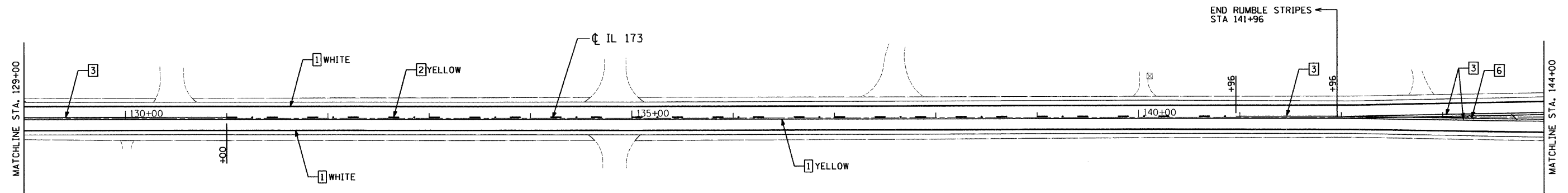


NOTE:
 XXXX HOT-MIX ASPHALT SURFACE REMOVAL - BUTT JOINT
 FOR CLARITY, CENTERLINE RUMBLE STRIPE IS NOT SHOWN
 AND REFER TO RUMBLE STRIPE DETAIL, SHEET 16



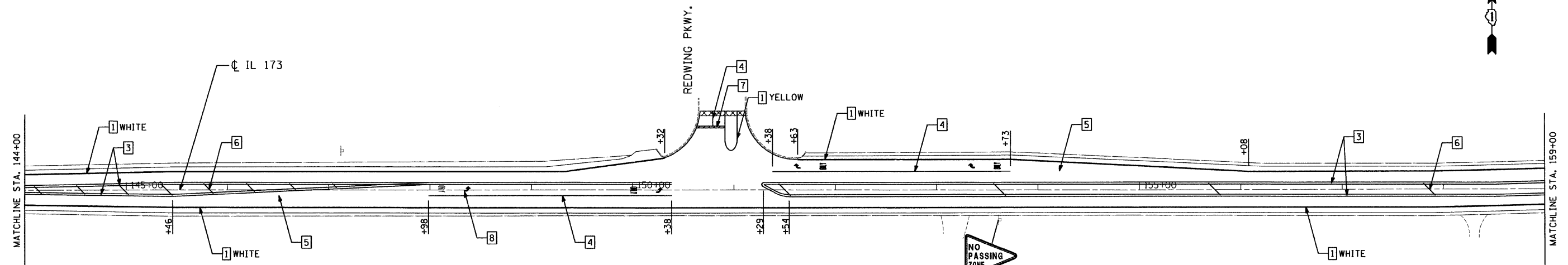
- LEGEND**
- 1 THERMOPLASTIC PAVEMENT MARKING - LINE 4" SOLID LINE
 - 2 THERMOPLASTIC PAVEMENT MARKING - LINE 4" SKIP DASH
 - 3 THERMOPLASTIC PAVEMENT MARKING - LINE 4" YELLOW DOUBLE CENTER LINE
 - 4 THERMOPLASTIC PAVEMENT MARKING - LINE 6" WHITE SOLID
 - 5 THERMOPLASTIC PAVEMENT MARKING - LINE 6" WHITE 2' DASH, 6' SKIP
 - 6 THERMOPLASTIC PAVEMENT MARKING - LINE 12" YELLOW @ 45 DEGREE
 - 7 THERMOPLASTIC PAVEMENT MARKING - LINE 24" WHITE
 - 8 THERMOPLASTIC PAVEMENT MARKING - LETTERS & SYMBOLS
 - 9 THERMOPLASTIC PAVEMENT MARKING - LINE 12" WHITE @ 45 DEGREE

FILE NAME = 1-24-2011	USER NAME = .USER.	DESIGNED - EF	REVISED -	STATE OF ILLINOIS DEPARTMENT OF TRANSPORTATION	IL 173 - DEEP LAKE ROAD TO W. OF HUNT CLUB ROAD ROADWAY PLANS	F.A.P. RTE. 303	SECTION 2010-116-1	COUNTY LAKE	TOTAL SHEETS 23	SHEET NO. 6		
#FILE#	PLOT SCALE = 50.0000' / IN.	DRAWN - EF	REVISED -			SCALE: 50	SHEET NO. 1 OF 9 SHEETS	STA. 100+00	TO STA. 129+00	CONTRACT NO. 60M50		
	PLOT DATE = 1/24/2011	CHECKED - RS	REVISED -			ILLINOIS FED. AID PROJECT						
		DATE - 01-03-2011	REVISED -									



NOTE:

HOT-MIX ASPHALT SURFACE REMOVAL - BUTT JOINT
 FOR CLARITY, CENTERLINE RUMBLE STRIPE IS NOT SHOWN
 AND REFER TO RUMBLE STRIPE DETAIL, SHEET 16



LEGEND

- | | | |
|--|---|---|
| 1 THERMOPLASTIC PAVEMENT MARKING - LINE 4" SOLID LINE | 5 THERMOPLASTIC PAVEMENT MARKING - LINE 6" WHITE 2' DASH, 6' SKIP | 9 THERMOPLASTIC PAVEMENT MARKING - LINE 12" WHITE @ 45 DEGREE |
| 2 THERMOPLASTIC PAVEMENT MARKING - LINE 4" SKIP DASH | 6 THERMOPLASTIC PAVEMENT MARKING - LINE 12" YELLOW @ 45 DEGREE | |
| 3 THERMOPLASTIC PAVEMENT MARKING - LINE 4" YELLOW DOUBLE CENTER LINE | 7 THERMOPLASTIC PAVEMENT MARKING - LINE 24" WHITE | |
| 4 THERMOPLASTIC PAVEMENT MARKING - LINE 6" WHITE SOLID | 8 THERMOPLASTIC PAVEMENT MARKING - LETTERS & SYMBOLS | |

1-24-2011

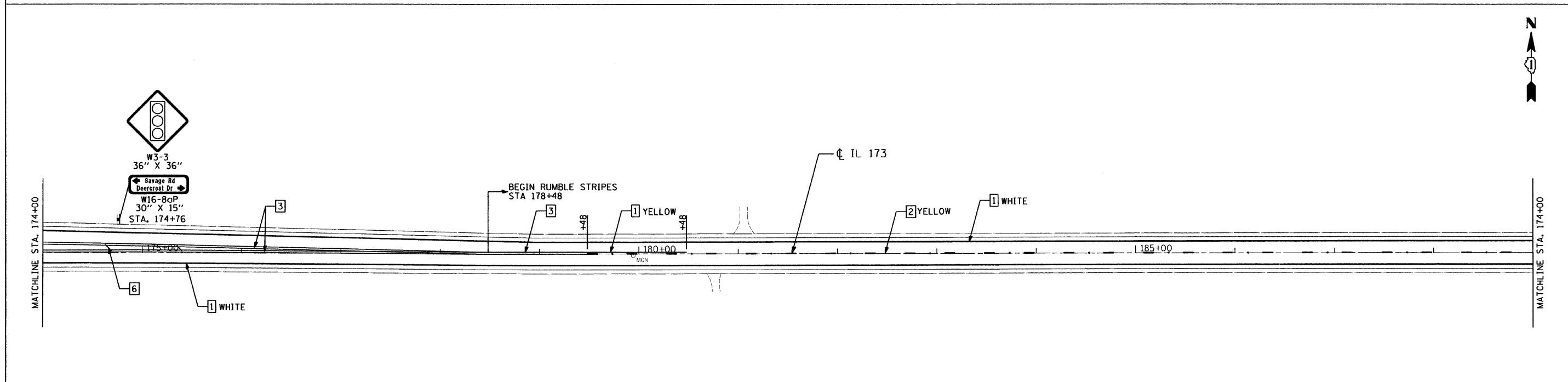
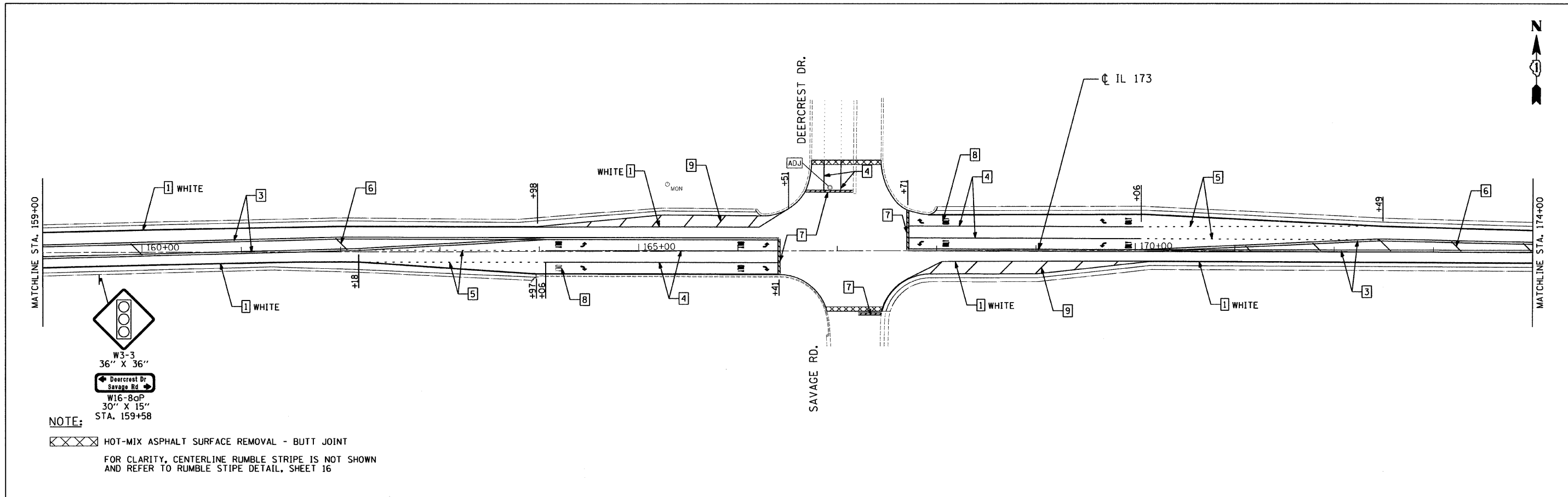
FILE NAME =	USER NAME = .USER.	DESIGNED - EF	REVISED -
#FILE#		DRAWN - EF	REVISED -
	PLOT SCALE = 50.0000' / IN.	CHECKED - RS	REVISED -
	PLOT DATE = 1/24/2011	DATE - 01-03-2011	REVISED -

STATE OF ILLINOIS
DEPARTMENT OF TRANSPORTATION

IL 173 - DEEP LAKE ROAD TO W. OF HUNT CLUB ROAD
ROADWAY PLANS

SCALE: 50 SHEET NO. 2 OF 9 SHEETS STA. 129+00 TO STA. 144+00

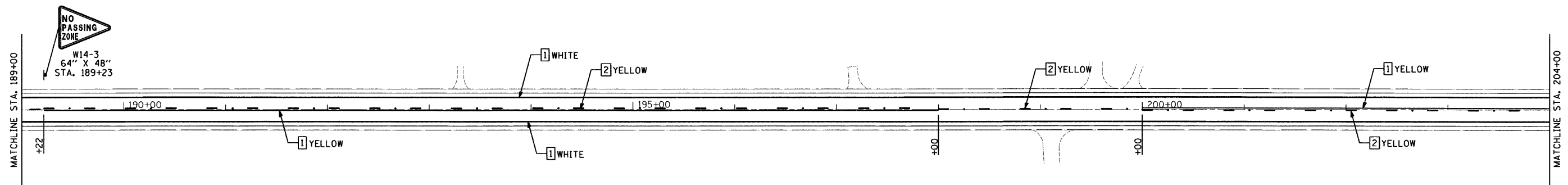
F.A.P. RTE.	SECTION	COUNTY	TOTAL SHEETS	SHEET NO.
303	2010-116-1	LAKE	23	7
CONTRACT NO. 60M50			ILLINOIS FED. AID PROJECT	



LEGEND

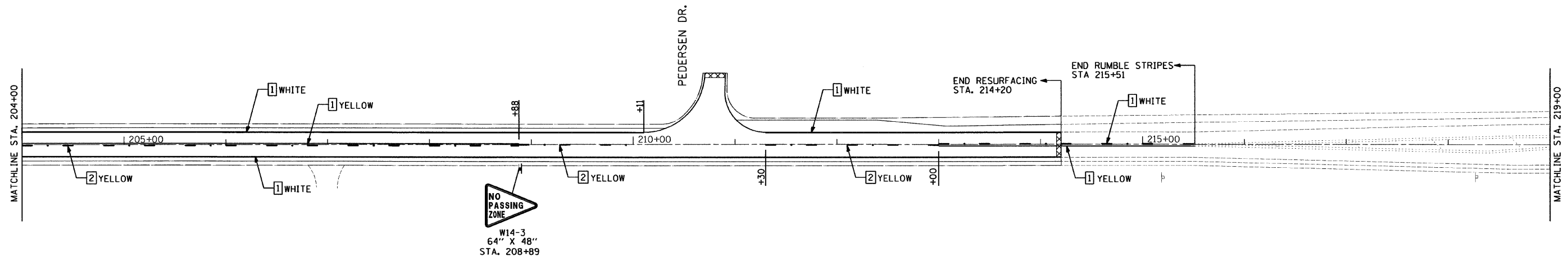
- 1 THERMOPLASTIC PAVEMENT MARKING - LINE 4" SOLID LINE
- 2 THERMOPLASTIC PAVEMENT MARKING - LINE 4" SKIP DASH
- 3 THERMOPLASTIC PAVEMENT MARKING - LINE 4" YELLOW DOUBLE CENTER LINE
- 4 THERMOPLASTIC PAVEMENT MARKING - LINE 6" WHITE SOLID
- 5 THERMOPLASTIC PAVEMENT MARKING - LINE 6" WHITE 2' DASH, 6' SKIP
- 6 THERMOPLASTIC PAVEMENT MARKING - LINE 12" YELLOW @ 45 DEGREE
- 7 THERMOPLASTIC PAVEMENT MARKING - LINE 24" WHITE
- 8 THERMOPLASTIC PAVEMENT MARKING - LETTERS & SYMBOLS
- 9 THERMOPLASTIC PAVEMENT MARKING - LINE 12" WHITE @ 45 DEGREE

FILE NAME =	USER NAME = .USER.	DESIGNED - EF	REVISED -	STATE OF ILLINOIS DEPARTMENT OF TRANSPORTATION	IL 173 - DEEP LAKE ROAD TO W. OF HUNT CLUB ROAD ROADWAY PLANS	F.A.P. RTE. 303	SECTION 2010-116-1	COUNTY LAKE	TOTAL SHEETS 23	SHEET NO. 8		
#FILE#	PLOT SCALE = 50,0000' / IN.	CHECKED - RS	REVISED -			SCALE: 50	SHEET NO. 3 OF 9 SHEETS	STA. 159+00	TO STA. 189+00	CONTRACT NO. 60M50		
	PLOT DATE = 1/24/2011	DATE - 01-03-2011	REVISED -			ILLINOIS FED. AID PROJECT						



NOTE:

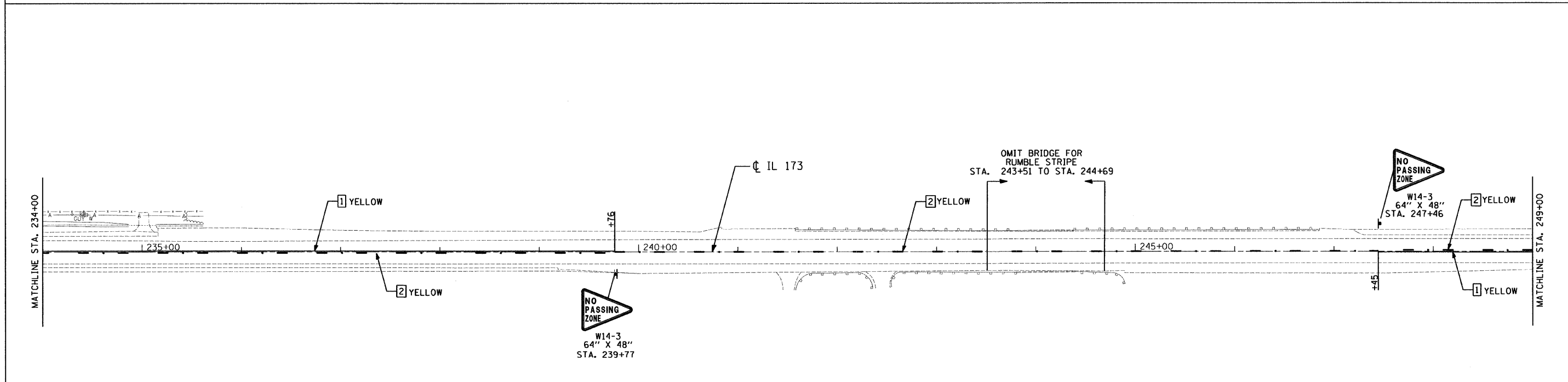
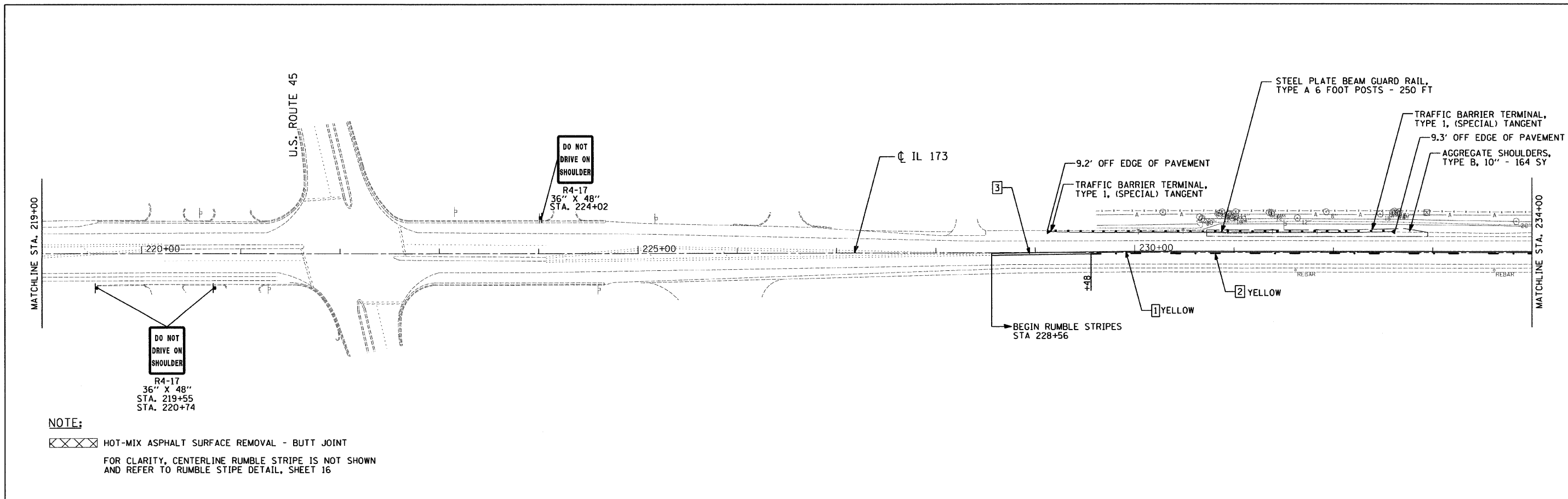
XXXX HOT-MIX ASPHALT SURFACE REMOVAL - BUTT JOINT
 FOR CLARITY, CENTERLINE RUMBLE STRIPE IS NOT SHOWN
 AND REFER TO RUMBLE STRIPE DETAIL, SHEET 16



LEGEND

- | | | |
|--|---|---|
| 1 THERMOPLASTIC PAVEMENT MARKING - LINE 4" SOLID LINE | 5 THERMOPLASTIC PAVEMENT MARKING - LINE 6" WHITE 2' DASH, 6' SKIP | 9 THERMOPLASTIC PAVEMENT MARKING - LINE 12" WHITE @ 45 DEGREE |
| 2 THERMOPLASTIC PAVEMENT MARKING - LINE 4" SKIP DASH | 6 THERMOPLASTIC PAVEMENT MARKING - LINE 12" YELLOW @ 45 DEGREE | |
| 3 THERMOPLASTIC PAVEMENT MARKING - LINE 4" YELLOW DOUBLE CENTER LINE | 7 THERMOPLASTIC PAVEMENT MARKING - LINE 24" WHITE | |
| 4 THERMOPLASTIC PAVEMENT MARKING - LINE 6" WHITE SOLID | 8 THERMOPLASTIC PAVEMENT MARKING - LETTERS & SYMBOLS | |

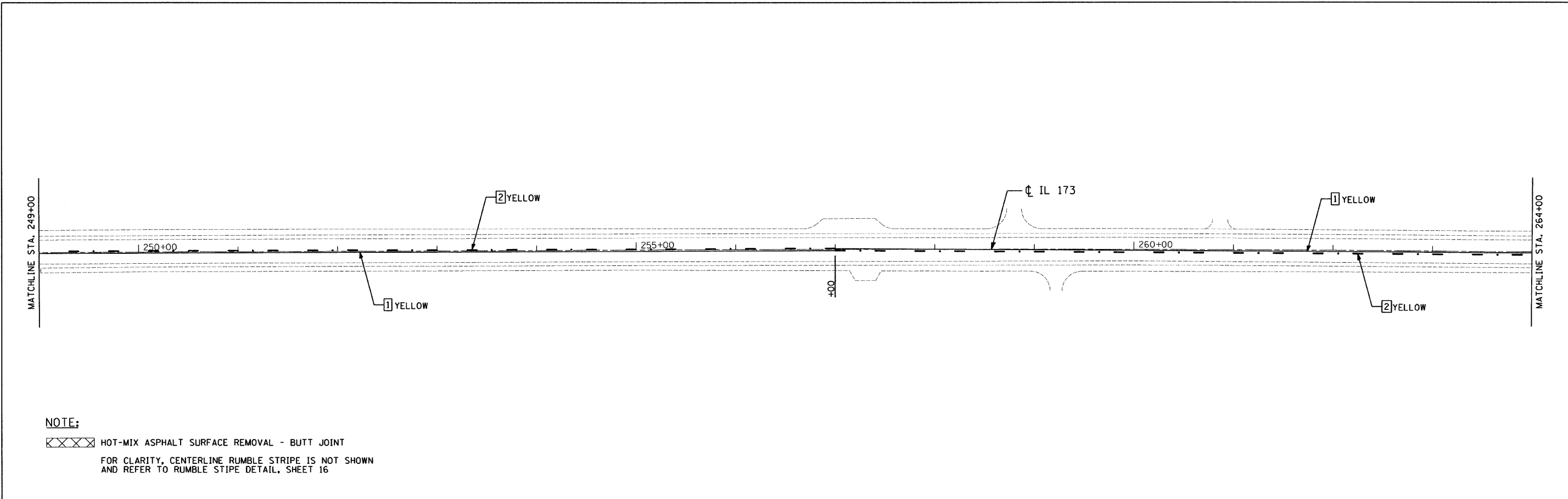
FILE NAME = *FILEL*	USER NAME = .USER. PLOT SCALE = 50.0000' / IN. PLOT DATE = 1/24/2011	DESIGNED - EF DRAWN - EF CHECKED - RS DATE - 01-03-2011	REVISED - REVISED - REVISED - REVISED -	STATE OF ILLINOIS DEPARTMENT OF TRANSPORTATION	IL 173 - DEEP LAKE ROAD TO W. OF HUNT CLUB ROAD ROADWAY PLANS	SCALE: 50 SHEET NO. 4 OF 9 SHEETS STA. 189+00 TO STA. 219+00	F.A.P. RTE. 303 SECTION 2010-116-1 COUNTY LAKE TOTAL SHEETS 23 SHEET NO. 9 CONTRACT NO. 60M50 [ILLINOIS] FED. AID PROJECT
------------------------	--	--	--	---	--	--	---



LEGEND

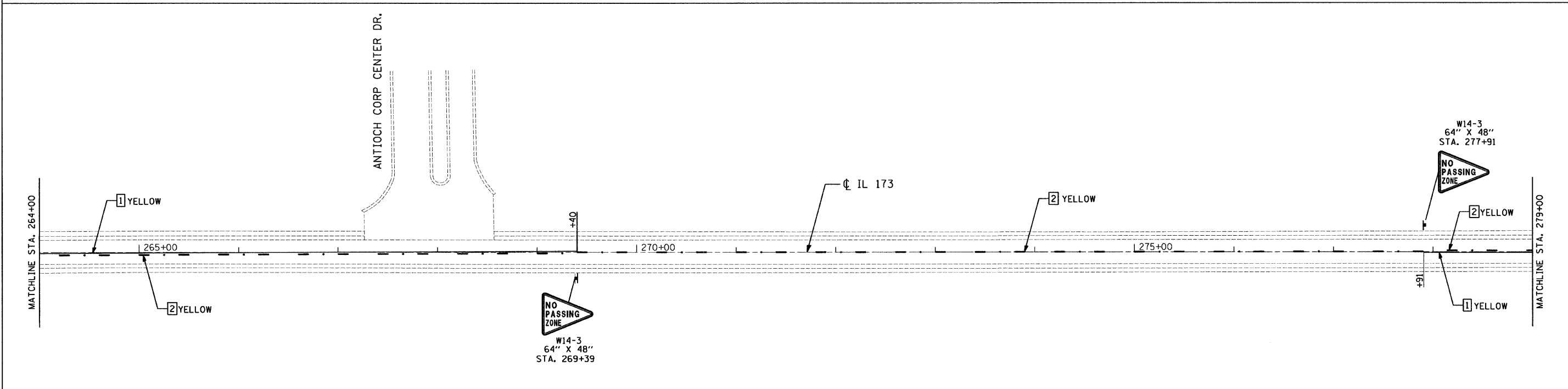
- 1 THERMOPLASTIC PAVEMENT MARKING - LINE 4" SOLID LINE
- 2 THERMOPLASTIC PAVEMENT MARKING - LINE 4" SKIP DASH
- 3 THERMOPLASTIC PAVEMENT MARKING - LINE 4" YELLOW DOUBLE CENTER LINE
- 4 THERMOPLASTIC PAVEMENT MARKING - LINE 6" WHITE SOLID
- 5 THERMOPLASTIC PAVEMENT MARKING - LINE 6" WHITE 2' DASH, 6' SKIP
- 6 THERMOPLASTIC PAVEMENT MARKING - LINE 12" YELLOW @ 45 DEGREE
- 7 THERMOPLASTIC PAVEMENT MARKING - LINE 24" WHITE
- 8 THERMOPLASTIC PAVEMENT MARKING - LETTERS & SYMBOLS
- 9 THERMOPLASTIC PAVEMENT MARKING - LINE 12" WHITE @ 45 DEGREE

FILE NAME =	USER NAME = .USER.	DESIGNED - EF	REVISED -	STATE OF ILLINOIS DEPARTMENT OF TRANSPORTATION	IL 173 - DEEP LAKE ROAD TO W. OF HUNT CLUB ROAD ROADWAY PLANS	F.A.P. RTE. 303	SECTION 2010-116-1	COUNTY LAKE	TOTAL SHEETS 23	SHEET NO. 10		
#FILE#	PLOT SCALE = 50,0000' / IN.	CHECKED - RS	REVISED -			SCALE: 50	SHEET NO. 5 OF 9 SHEETS	STA. 219+00 TO STA. 249+00		CONTRACT NO. 60M50		
	PLOT DATE = 1/24/2011	DATE - 01-03-2011	REVISED -			ILLINOIS FED. AID PROJECT						



NOTE:

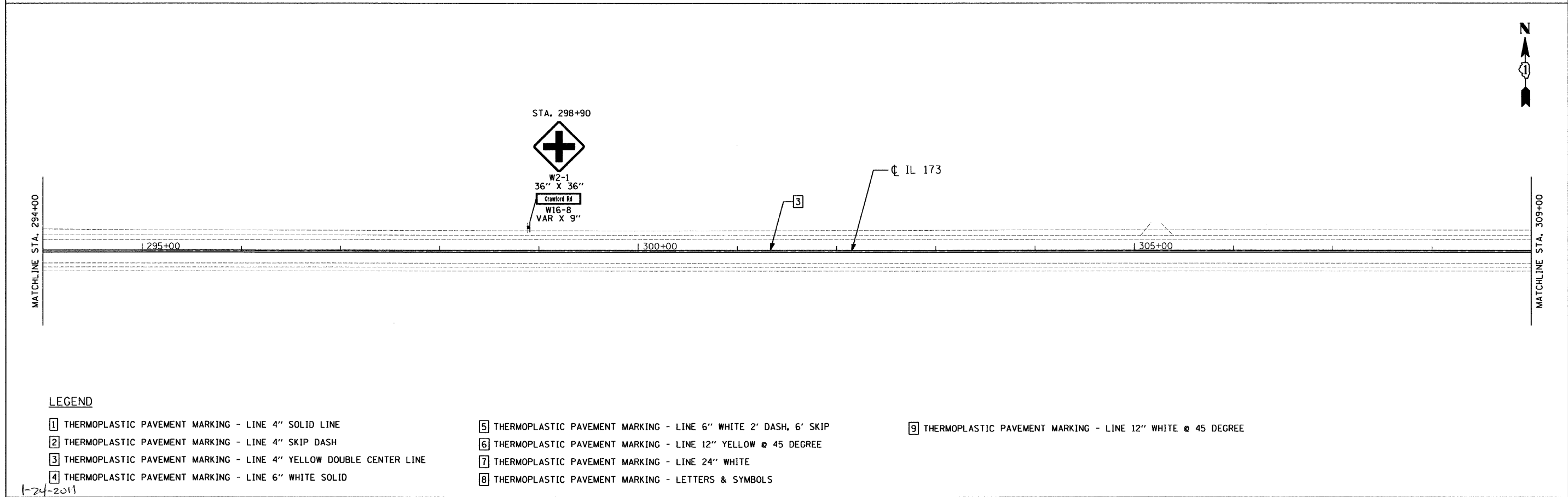
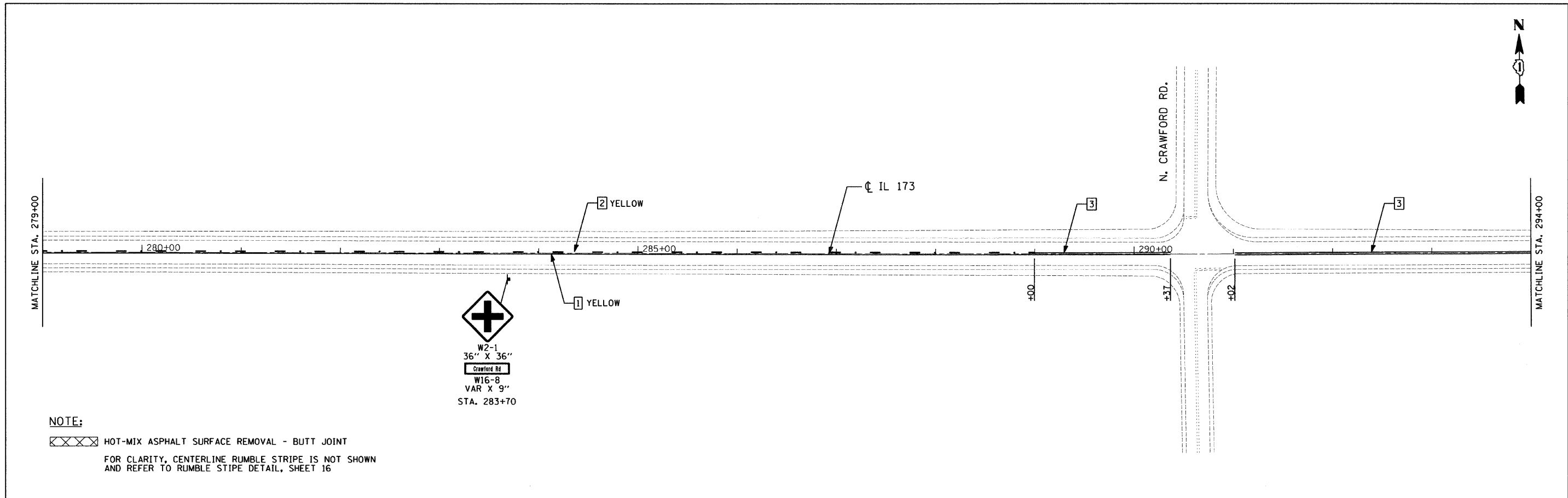
HOT-MIX ASPHALT SURFACE REMOVAL - BUTT JOINT
 FOR CLARITY, CENTERLINE RUMBLE STRIPE IS NOT SHOWN
 AND REFER TO RUMBLE STRIPE DETAIL, SHEET 16



LEGEND

- | | | |
|--|---|---|
| 1 THERMOPLASTIC PAVEMENT MARKING - LINE 4" SOLID LINE | 5 THERMOPLASTIC PAVEMENT MARKING - LINE 6" WHITE 2' DASH, 6' SKIP | 9 THERMOPLASTIC PAVEMENT MARKING - LINE 12" WHITE @ 45 DEGREE |
| 2 THERMOPLASTIC PAVEMENT MARKING - LINE 4" SKIP DASH | 6 THERMOPLASTIC PAVEMENT MARKING - LINE 12" YELLOW @ 45 DEGREE | |
| 3 THERMOPLASTIC PAVEMENT MARKING - LINE 4" YELLOW DOUBLE CENTER LINE | 7 THERMOPLASTIC PAVEMENT MARKING - LINE 24" WHITE | |
| 4 THERMOPLASTIC PAVEMENT MARKING - LINE 6" WHITE SOLID | 8 THERMOPLASTIC PAVEMENT MARKING - LETTERS & SYMBOLS | |

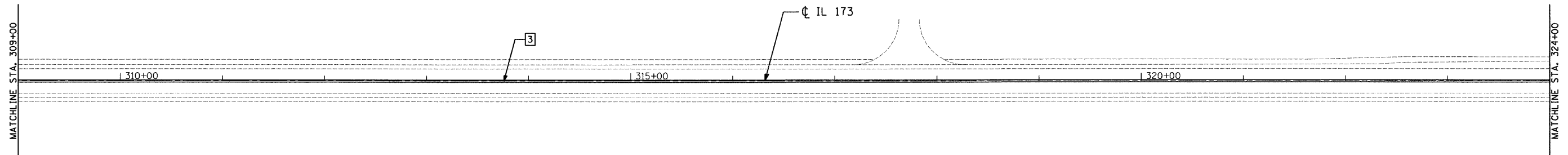
FILE NAME =	USER NAME = .USER.	DESIGNED - EF	REVISED -	STATE OF ILLINOIS DEPARTMENT OF TRANSPORTATION	IL 173 - DEEP LAKE ROAD TO W. OF HUNT CLUB ROAD ROADWAY PLANS	F.A.P. RTE.	SECTION	COUNTY	TOTAL SHEETS	SHEET NO.	
#FILE#	PLOT SCALE = 50.0000' / IN.	DRAWN - EF	REVISED -			303	2010-116-1	LAKE	23	11	
	PLOT DATE = 1/24/2011	CHECKED - RS	REVISED -			CONTRACT NO. 60M50					
		DATE - 01-03-2011	REVISED -			ILLINOIS FED. AID PROJECT					
					SCALE: 50	SHEET NO. 6 OF 9 SHEETS		STA. 249+00 TO STA. 279+00			



LEGEND

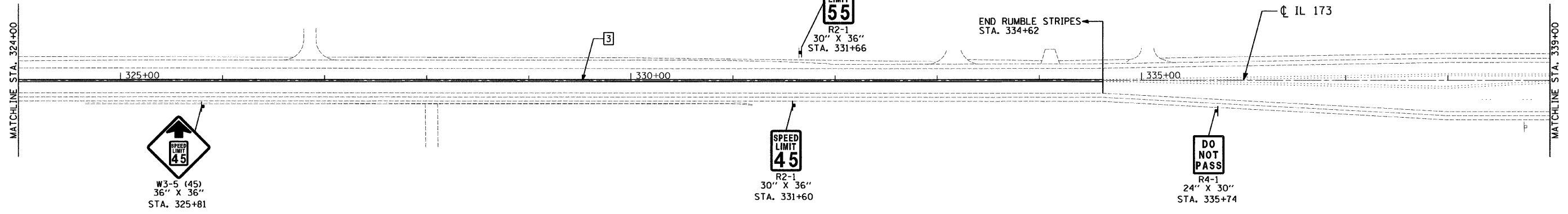
- 1 THERMOPLASTIC PAVEMENT MARKING - LINE 4" SOLID LINE
- 2 THERMOPLASTIC PAVEMENT MARKING - LINE 4" SKIP DASH
- 3 THERMOPLASTIC PAVEMENT MARKING - LINE 4" YELLOW DOUBLE CENTER LINE
- 4 THERMOPLASTIC PAVEMENT MARKING - LINE 6" WHITE SOLID
- 5 THERMOPLASTIC PAVEMENT MARKING - LINE 6" WHITE 2' DASH, 6' SKIP
- 6 THERMOPLASTIC PAVEMENT MARKING - LINE 12" YELLOW @ 45 DEGREE
- 7 THERMOPLASTIC PAVEMENT MARKING - LINE 24" WHITE
- 8 THERMOPLASTIC PAVEMENT MARKING - LETTERS & SYMBOLS
- 9 THERMOPLASTIC PAVEMENT MARKING - LINE 12" WHITE @ 45 DEGREE

FILE NAME =	USER NAME = .USER.	DESIGNED - EF	REVISED -	STATE OF ILLINOIS DEPARTMENT OF TRANSPORTATION	IL 173 - DEEP LAKE ROAD TO W. OF HUNT CLUB ROAD ROADWAY PLANS	F.A.P. RTE. 303	SECTION 2010-116-1	COUNTY LAKE	TOTAL SHEETS 23	SHEET NO. 12		
#FILE#	PLOT SCALE = 50.0000' / IN.	DRAWN - EF	REVISED -			SCALE: 50	SHEET NO. 7 OF 9 SHEETS	STA. 279+00	TO STA. 309+00	CONTRACT NO. 60M50		
	PLOT DATE = 1/24/2011	CHECKED - RS	REVISED -			ILLINOIS FED. AID PROJECT						
		DATE - 01-03-2011	REVISED -									



NOTE:

☒☒☒☒ HOT-MIX ASPHALT SURFACE REMOVAL - BUTT JOINT
 FOR CLARITY, CENTERLINE RUMBLE STRIPE IS NOT SHOWN
 AND REFER TO RUMBLE STRIPE DETAIL, SHEET 16



LEGEND

- 1] THERMOPLASTIC PAVEMENT MARKING - LINE 4" SOLID LINE
- 2] THERMOPLASTIC PAVEMENT MARKING - LINE 4" SKIP DASH
- 3] THERMOPLASTIC PAVEMENT MARKING - LINE 4" YELLOW DOUBLE CENTER LINE
- 4] THERMOPLASTIC PAVEMENT MARKING - LINE 6" WHITE SOLID
- 5] THERMOPLASTIC PAVEMENT MARKING - LINE 6" WHITE 2' DASH, 6' SKIP
- 6] THERMOPLASTIC PAVEMENT MARKING - LINE 12" YELLOW @ 45 DEGREE
- 7] THERMOPLASTIC PAVEMENT MARKING - LINE 24" WHITE
- 8] THERMOPLASTIC PAVEMENT MARKING - LETTERS & SYMBOLS
- 9] THERMOPLASTIC PAVEMENT MARKING - LINE 12" WHITE @ 45 DEGREE

FILE NAME =	USER NAME = .USER.	DESIGNED - EF	REVISED -	STATE OF ILLINOIS DEPARTMENT OF TRANSPORTATION	IL 173 - DEEP LAKE ROAD TO W. OF HUNT CLUB ROAD ROADWAY PLANS	F.A.P. RTE. 303	SECTION 2010-116-1	COUNTY LAKE	TOTAL SHEETS 23	SHEET NO. 13		
#FILE#	PLT SCALE = 50.0000' / IN.	DRAWN - EF	REVISED -			SCALE: 50	SHEET NO. 8 OF 9 SHEETS	STA. 309+00	TO STA. 339+00	CONTRACT NO. 60M50 ILLINOIS FED. AID PROJECT		
	PLT DATE = 1/24/2011	CHECKED - RS	REVISED -									
		DATE - 01-03-2011	REVISED -									

MATCHLINE STA. 339+00

340+00

N. HUNT CLUB RD.



NOTE:

☒☒☒☒ HOT-MIX ASPHALT SURFACE REMOVAL - BUTT JOINT
 FOR CLARITY, CENTERLINE RUMBLE STRIPE IS NOT SHOWN
 AND REFER TO RUMBLE STRIPE DETAIL, SHEET 16

LEGEND

- | | |
|---|--|
| 1] THERMOPLASTIC PAVEMENT MARKING - LINE 4" SOLID LINE | 5] THERMOPLASTIC PAVEMENT MARKING - LINE 6" WHITE 2' DASH, 6' SKIP |
| 2] THERMOPLASTIC PAVEMENT MARKING - LINE 4" SKIP DASH | 6] THERMOPLASTIC PAVEMENT MARKING - LINE 12" YELLOW @ 45 DEGREE |
| 3] THERMOPLASTIC PAVEMENT MARKING - LINE 4" YELLOW DOUBLE CENTER LINE | 7] THERMOPLASTIC PAVEMENT MARKING - LINE 24" WHITE |
| 4] THERMOPLASTIC PAVEMENT MARKING - LINE 6" WHITE SOLID | 8] THERMOPLASTIC PAVEMENT MARKING - LETTERS & SYMBOLS |

FILE NAME =	USER NAME = .USER.	DESIGNED - EF	REVISED -
FILEL		DRAWN - EF	REVISED -
	PLOT SCALE = 50.0000' / IN.	CHECKED - RS	REVISED -
	PLOT DATE = 1/3/2011	DATE - 01-03-2011	REVISED -

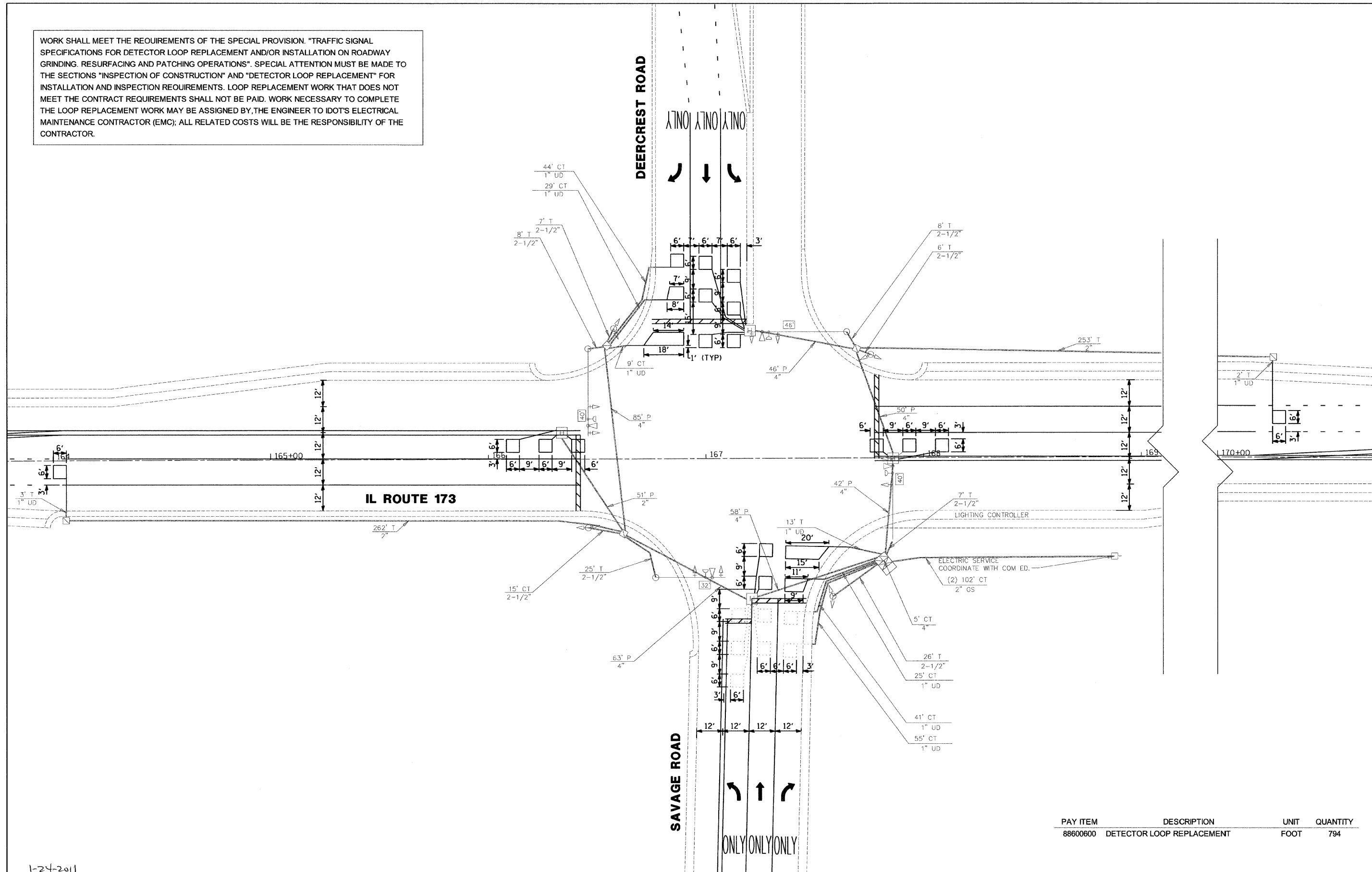
**STATE OF ILLINOIS
 DEPARTMENT OF TRANSPORTATION**

**IL 173 - DEEP LAKE ROAD TO W. OF HUNT CLUB ROAD
 ROADWAY PLANS**

SCALE: 50 SHEET NO. 9 OF 9 SHEETS STA. 339+00 TO STA.

F.A.P. RTE.	SECTION	COUNTY	TOTAL SHEETS	SHEET NO.
303	2010-116-1	LAKE	23	14
				CONTRACT NO. 60M50
ILLINOIS FED. AID PROJECT				

WORK SHALL MEET THE REQUIREMENTS OF THE SPECIAL PROVISION, "TRAFFIC SIGNAL SPECIFICATIONS FOR DETECTOR LOOP REPLACEMENT AND/OR INSTALLATION ON ROADWAY GRINDING, RESURFACING AND PATCHING OPERATIONS". SPECIAL ATTENTION MUST BE MADE TO THE SECTIONS "INSPECTION OF CONSTRUCTION" AND "DETECTOR LOOP REPLACEMENT" FOR INSTALLATION AND INSPECTION REQUIREMENTS. LOOP REPLACEMENT WORK THAT DOES NOT MEET THE CONTRACT REQUIREMENTS SHALL NOT BE PAID. WORK NECESSARY TO COMPLETE THE LOOP REPLACEMENT WORK MAY BE ASSIGNED BY THE ENGINEER TO IDOT'S ELECTRICAL MAINTENANCE CONTRACTOR (EMC); ALL RELATED COSTS WILL BE THE RESPONSIBILITY OF THE CONTRACTOR.



PAY ITEM	DESCRIPTION	UNIT	QUANTITY
88600600	DETECTOR LOOP REPLACEMENT	FOOT	794

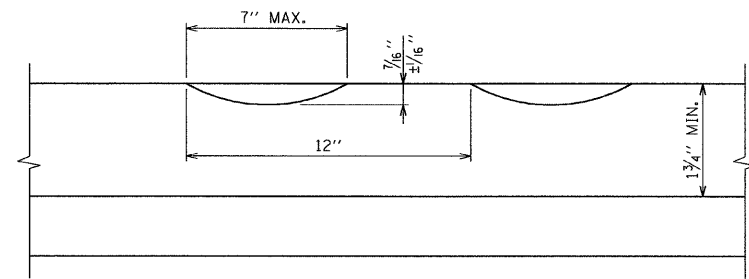
1-24-2011
 FILE NAME =
 #FILEL#

USER NAME = .USER.	DESIGNED - EF	REVISED -
DRAWN - EF	CHECKED - RS	REVISED -
PLOT SCALE = 20.0000' / IN.	DATE - 01-03-2011	REVISED -
PLOT DATE = 1/24/2011		

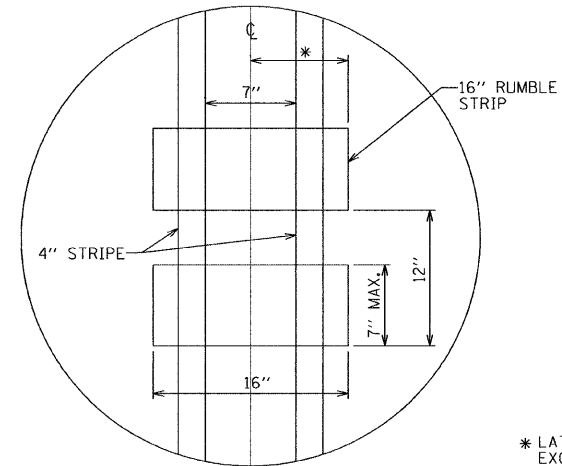
STATE OF ILLINOIS
 DEPARTMENT OF TRANSPORTATION

IL 173 - DEEP LAKE ROAD TO W. OF HUNT CLUB ROAD
 TRAFFIC SIGNAL DETECTOR LOOP REPLACEMENT
 SCALE: 20 SHEET NO. 1 OF 1 SHEETS STA. TO STA.

F.A.P. RTE.	SECTION	COUNTY	TOTAL SHEETS	SHEET NO.
303	2010-116-1	LAKE	23	15
CONTRACT NO. 60M50				
ILLINOIS FED. AID PROJECT				

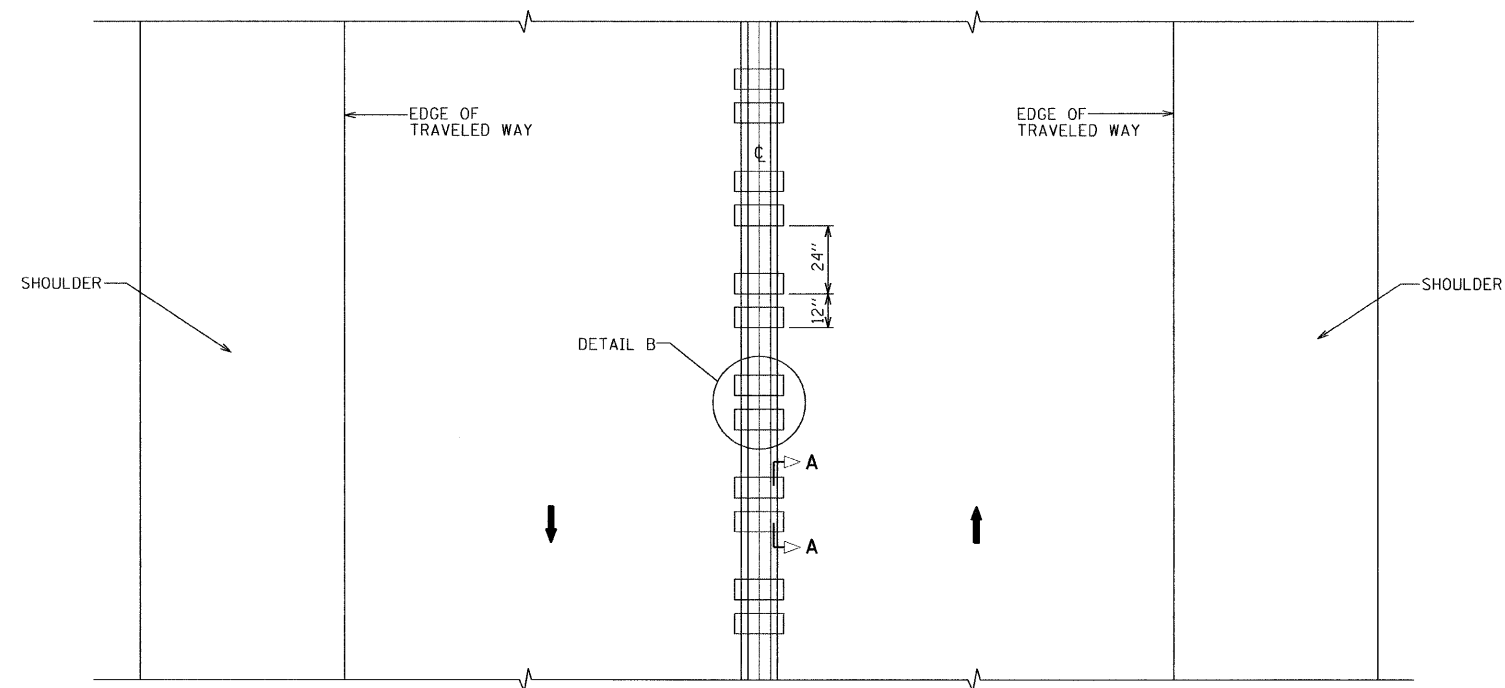


SECTION A-A



DETAIL B

* LATERAL DEVIATION SHALL NOT EXCEED ONE INCH IN 100 FT.



TWO-WAY ROAD

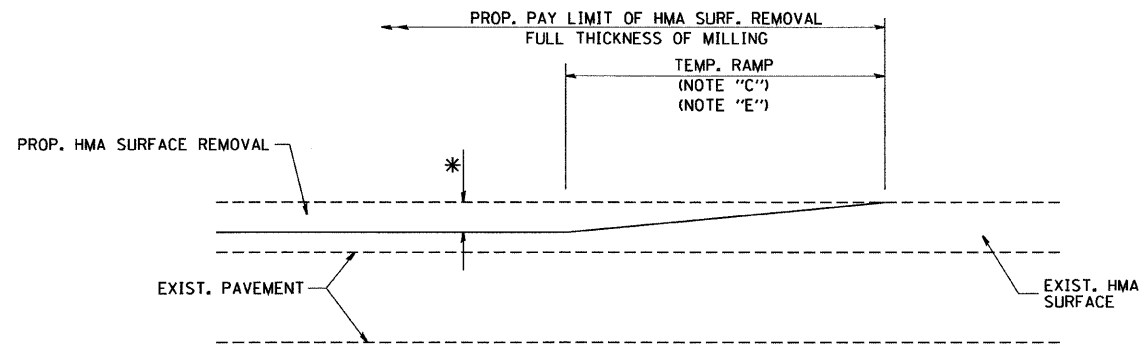
GENERAL NOTES:

- SEE STANDARD 780001 FOR OTHER STRIPING LAYOUTS.
- RUMBLE STRIPS SHALL NOT BE PLACED ON BRIDGES.
- ALL RUMBLE STRIPS SHALL BE MILLED.
- CENTERLINE RUMBLE STRIPS SHALL BE CONTINUOUS THROUGH CONNECTIONS OF SIDEROADS WITH NO LEFT TURN LANES.
- DISCONTINUE CENTERLINE RUMBLE STRIPS THROUGH THE LIMITS OF ALL LEFT TURN LANES, INCLUDING ANY LANE TAPER SECTIONS.

WHERE USED, ADJUST SPACING OF RAISED REFLECTIVE PAVEMENT MARKERS TO FALL IN WIDER GAP BETWEEN RUMBLE STRIPS.

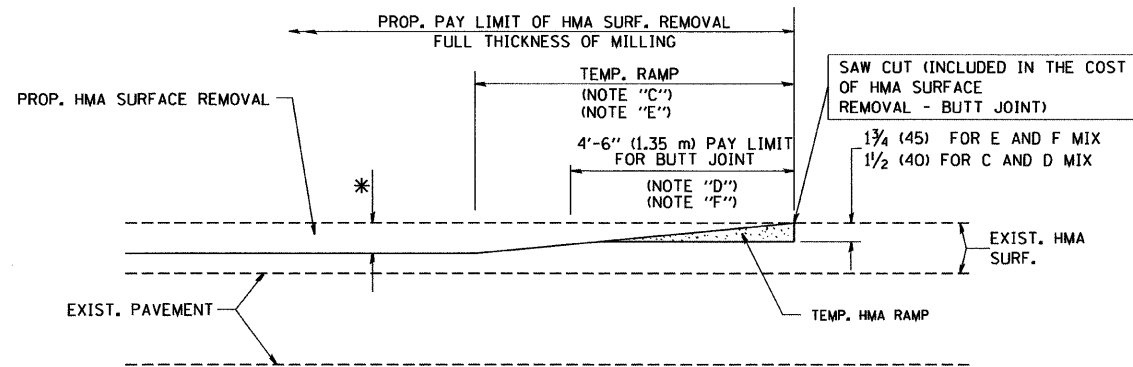
CENTERLINE RUMBLE STRIPS TO BE PAID FOR AS RUMBLE STRIP AND THERMOPLASTIC PAVEMENT MARKING LINE 4".

FILE NAME =	USER NAME = .USER.	DESIGNED - EF	REVISED -	STATE OF ILLINOIS DEPARTMENT OF TRANSPORTATION	IL 173 - DEEP LAKE ROAD TO W. OF HUNT CLUB ROAD RUMBLE STRIPE DETAIL			F.A.P. RTE.	SECTION	COUNTY	TOTAL SHEETS	SHEET NO.
FILEL	PLOT SCALE = 40.0000' / IN.	DRAWN - EF	REVISED -					303	2010-116-1	LAKE	23	16
	PLOT DATE = 1/3/2011	CHECKED - RS	REVISED -		SCALE: 50			SHEET NO. 1 OF 1 SHEETS			CONTRACT NO. 60M50	
		DATE - 01-03-2011	REVISED -		STA. TO STA.			ILLINOIS FED. AID PROJECT				



MILLED TEMPORARY RAMP
(FOR BUTT JOINT AND HMA TAPER SEE DETAIL BELOW)

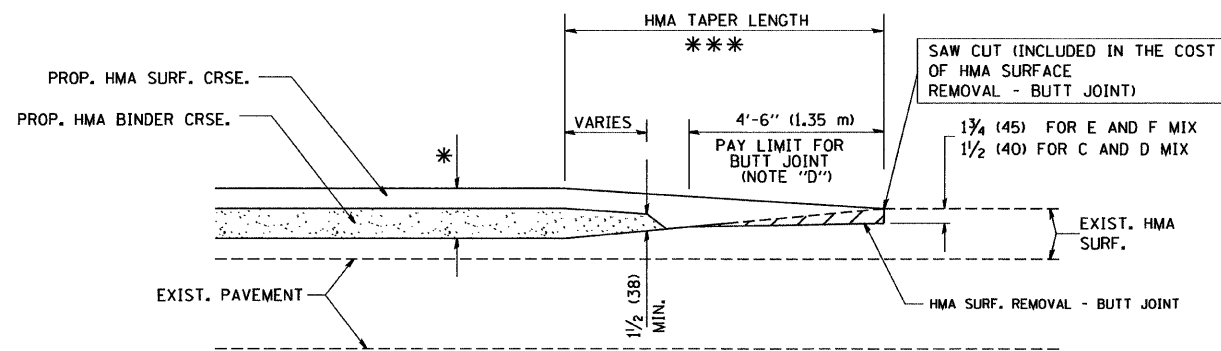
OPTION 1



HMA CONSTRUCTED TEMPORARY RAMP
(FOR BUTT JOINT AND HMA TAPER SEE DETAIL BELOW)

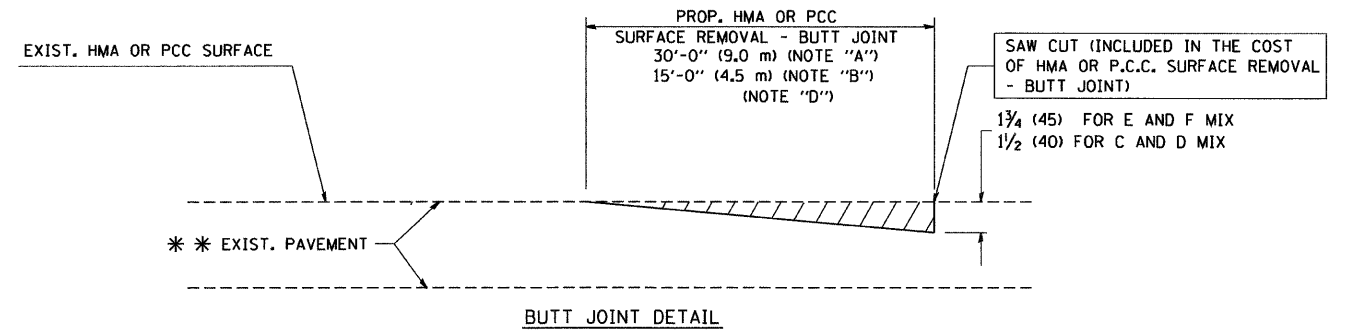
OPTION 2

TYPICAL TEMPORARY RAMP

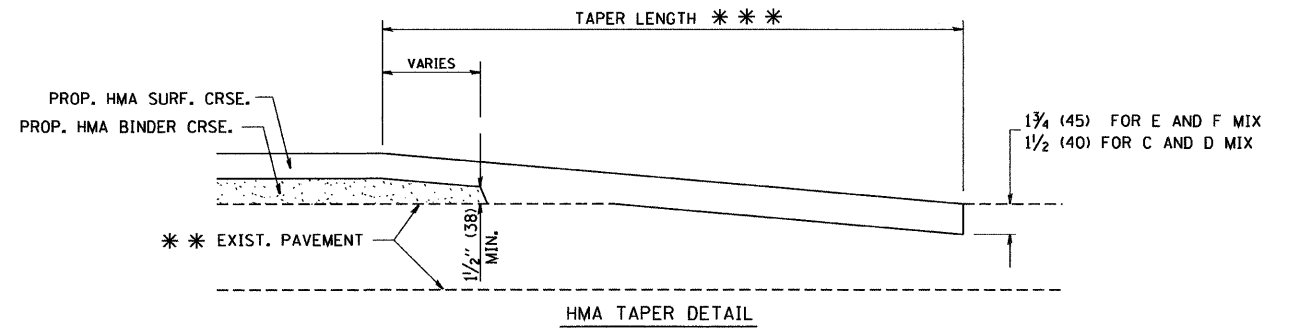


BUTT JOINT AND
HMA TAPER

TYPICAL BUTT JOINT AND HMA TAPER
FOR MILLING AND RESURFACING



BUTT JOINT DETAIL



HMA TAPER DETAIL

TYPICAL BUTT JOINT AND HMA TAPER
FOR RESURFACING ONLY

* * * PC CONCRETE, HMA OR HMA RESURFACED PAVEMENT.

NOTES

- A: MAINLINE ROADWAYS AND MAJOR SIDE ROADS.
 - B: MINOR SIDE ROADS.
 - C: THE TEMP. RAMP SHALL BE CONSTRUCTED IMMEDIATELY UPON REMOVAL OF THE EXISTING HMA SURFACE.
 - D: THE BUTT JOINT SHALL BE CONSTRUCTED IMMEDIATELY PRIOR TO PLACING THE PROPOSED HMA COURSES.
 - E: TAPER THE TEMP. RAMP AT A RATE OF 3'-0" (900 mm) PER 1 INCH (25 mm) OF MILLING THICKNESS.
 - F: INSTALLATION AND REMOVAL OF THE 4'-6" (1.35 m) TEMP. RAMP IS INCLUDED IN COST OF HMA SURFACE REMOVAL - BUTT JOINT
 - G: SEE ARTICLE 406.08 AND 406.14 OF THE STANDARD SPECIFICATIONS FOR "HMA AND/OR PCC SURFACE REMOVAL, BUTT JOINT".
- * SEE TYPICAL SECTIONS FOR MILLING THICKNESS.
- * * * 20'-0" (6.1 m) PER 1 (25) RESURFACING (NOTE "A")
10'-0" (3.0 m) PER 1 (25) RESURFACING (NOTE "B")

BASIS OF PAYMENT:

THE BUTT JOINT WILL BE PAID FOR AT THE CONTRACT UNIT PRICE PER SQUARE YARD (SQUARE METER) FOR "HOT-MIX ASPHALT SURFACE REMOVAL - BUTT JOINT" OR FOR "PORTLAND CEMENT CONCRETE SURFACE REMOVAL - BUTT JOINT".

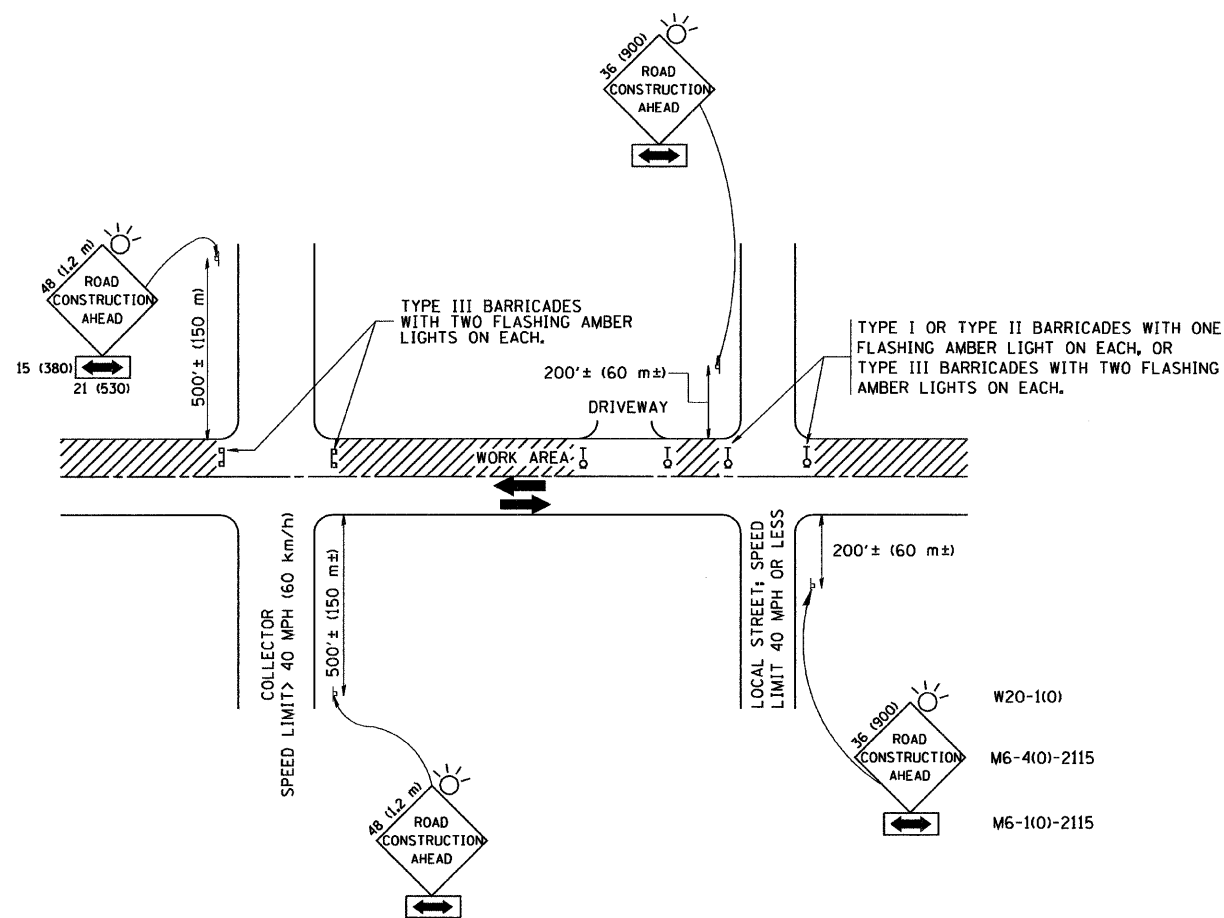
ALL DIMENSIONS ARE IN INCHES (MILLIMETERS) UNLESS OTHERWISE SHOWN.

FILE NAME = W:\d\stsd\22x34\bd32.dgn	USER NAME = gegl1onabt	DESIGNED - M. DE YONG	REVISED - R. SHAH 10-25-94
		DRAWN -	REVISED - A. ABBAS 03-21-97
	PLOT SCALE = 50.0000 ' / IN.	CHECKED -	REVISED - M. GOMEZ 04-06-01
	PLOT DATE = 1/4/2008	DATE - 06-13-90	REVISED - R. BORO 01-01-07

STATE OF ILLINOIS
DEPARTMENT OF TRANSPORTATION

BUTT JOINT AND HMA TAPER DETAILS		F.A.P. RTE. 303	SECTION 2010-116-1	COUNTY LAKE	TOTAL SHEETS 23	SHEET NO. 17
SCALE: NONE	SHEET NO. 1 OF 1 SHEETS	STA.	TO STA.		CONTRACT NO. 60M50	

BD400-05 BD32		CONTRACT NO. 60M50	
FED. ROAD DIST. NO. 1 ILLINOIS FED. AID PROJECT			



TRAFFIC CONTROL AND PROTECTION FOR SIDE ROADS, INTERSECTIONS, AND DRIVEWAYS

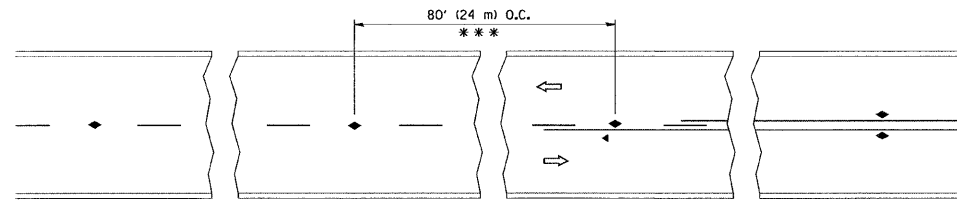
NOTES:

- A. FOR NO LANE RESTRICTION ON THE SIDE ROAD OR DRIVEWAYS
 1. SIDE ROAD WITH A SPEED LIMIT OF 40 MPH (60 km/h) OR LESS AS SHOWN ON THE DRAWING AND AS DIRECTED BY THE ENGINEER:
 - a) ONE ROAD CONSTRUCTION AHEAD SIGN 36 x 36 (900x900) WITH A FLASHER AND FLAG MOUNTED ON IT APPROXIMATELY 200' (60 m) IN ADVANCE OF THE MAIN ROUTE.
 - b) THE CLOSED PORTION OF THE MAIN ROUTE SHALL BE PROTECTED BY BLOCKING WITH TYPE I, TYPE II OR TYPE III BARRICADES, 1/3 OF THE CROSS SECTION OF THE CLOSED PORTION.
 2. SIDE ROAD WITH A SPEED LIMIT GREATER THAN 40 MPH (60 km/h) AS SHOWN ON THE DRAWING AND AS DIRECTED BY THE ENGINEER:
 - a) ONE ROAD CONSTRUCTION AHEAD SIGN 48 x 48 (1.2 m x 1.2 m) WITH A FLASHER MOUNTED ON IT APPROXIMATELY 500' (150 m) IN ADVANCE OF THE MAIN ROUTE.
 - b) THE CLOSED PORTION OF THE MAIN ROUTE SHALL BE PROTECTED BY BLOCKING WITH TYPE III BARRICADES, 1/2 OF THE CROSS SECTION OF THE CLOSED PORTION.
- B. FOR A LANE CLOSURE ON A SIDE ROAD OR DRIVEWAY:

USE APPLICABLE PORTIONS OF THE TYPICAL APPLICATION OF TRAFFIC CONTROL DEVICES (STD. 701501, STD. 701606 OR THE APPROPRIATE STANDARD). THE SPACING OF SIGNS AND BARRICADES SHALL BE ADJUSTED FOR FIELD CONDITIONS AS DIRECTED BY THE ENGINEER. THE DIRECTIONAL ARROW SHALL BE COVERED OR REMOVED WHEN NO LONGER CONSISTENT WITH THE SIDE ROAD LANE CLOSURE.
- C. ADVANCE WARNING SIGNS ARE TO BE OMITTED ON DRIVEWAY UNLESS OTHERWISE NOTED.
- D. THE TRAFFIC CONTROL AND PROTECTION FOR SIDE ROADS, INTERSECTIONS, AND DRIVEWAYS SHALL BE INCIDENTAL TO THE COST OF SPECIFIED TRAFFIC CONTROL STANDARDS OR ITEMS.

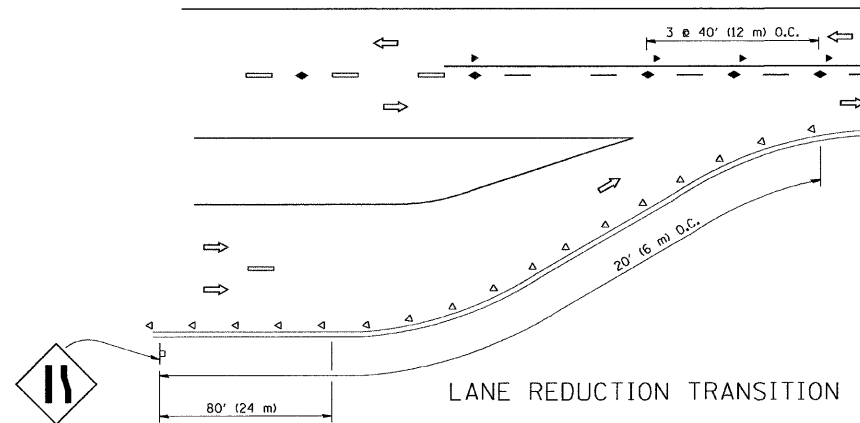
All dimensions are in millimeters (inches) unless otherwise shown.

FILE NAME = M:\distsd\22x34\sc18.dgn	USER NAME = gegl1enobt	DESIGNED - LHA	REVISED - J. OBERLE 10-18-95	STATE OF ILLINOIS DEPARTMENT OF TRANSPORTATION	TRAFFIC CONTROL AND PROTECTION FOR SIDE ROADS, INTERSECTIONS, AND DRIVEWAYS			F.A.P. RTE.	SECTION	COUNTY	TOTAL SHEETS	SHEET NO.
	PLOT SCALE = 50.000' / IN.	DRAWN -	REVISED - A. HOUSEH 03-06-96		303	2010-116-1	LAKE	23	18			
	PLOT DATE = 1/4/2008	CHECKED -	REVISED - A. HOUSEH 10-15-96		SCALE: NONE SHEET NO. 1 OF 1 SHEETS STA. TO STA.			TC-10		CONTRACT NO. 60M50		
	DATE - 06-89	REVISED - T. RAMMACHER 01-06-00		FED. ROAD DIST. NO. 1 ILLINOIS FED. AID PROJECT								

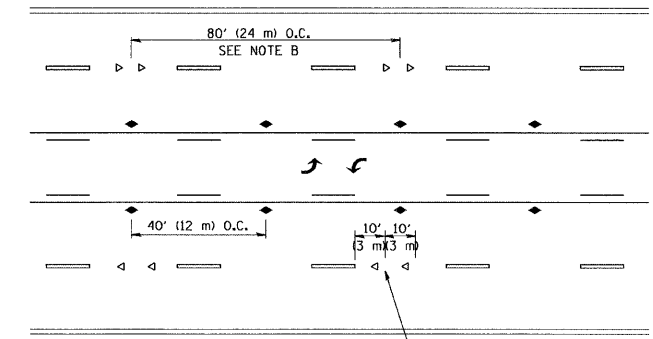


*** REDUCE TO 40' (12 m) O.C. ON CURVES WITH POSTED OR ADVISORY SPEED 45 M.P.H. (70 km/h) OR LESS.

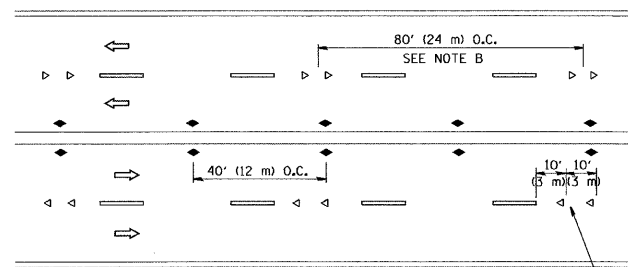
TWO-LANE/TWO-WAY



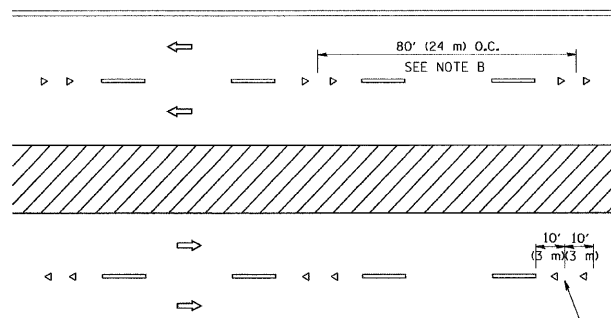
LANE REDUCTION TRANSITION



TWO-WAY LEFT TURN



MULTI-LANE/UNDIVIDED



MULTI-LANE/DIVIDED

GENERAL NOTES

1. MARKERS USED WITH DASHED LINES SHALL BE CENTERED IN THE GAP BETWEEN SEGMENTS.
2. MARKERS USED ADJACENT TO SOLID LINES SHALL BE OFFSET 2 TO 3 (50 TO 75) TOWARD TRAFFIC AS SHOWN.
3. MARKERS THROUGH TANGENTS LESS THAN 500' (150 m) IN LENGTH BETWEEN CURVES SHALL BE INSTALLED AT THE LESSER OF THE TWO CURVE SPACINGS.

SYMBOLS

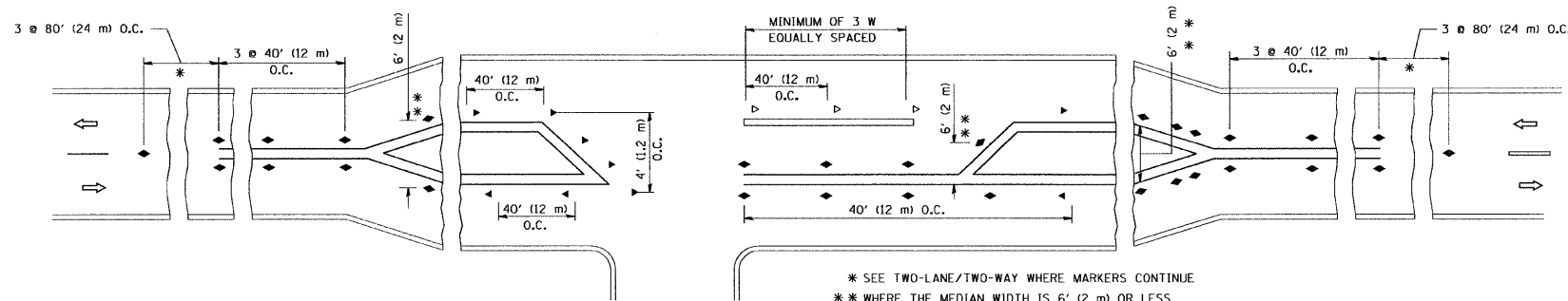
- YELLOW STRIPE
- WHITE STRIPE
- ◀ ONE-WAY AMBER MARKER
- ◁ ONE-WAY CRYSTAL MARKER (W/O)
- ◆ TWO-WAY AMBER MARKER

LANE MARKER NOTES

- A. USE DOUBLE LANE LINE MARKERS SPACED AS SHOWN.
- B. REDUCE TO 40' (12 m) O.C. ON CURVES WHERE ADVISORY SPEEDS ARE 10 M.P.H. (20 km/h) LOWER THAN POSTED SPEEDS.

DESIGN NOTES

1. DOUBLE LANE LINE MARKERS SHALL BE USED UNLESS SPECIFIED OTHERWISE.
2. EXCEPT AS SHOWN ON THE LANE REDUCTION TRANSITION AND FREEWAY EXIT RAMP DETAIL, MARKERS ARE NOT TO BE SPECIFIED ON RIGHT EDGE LINES.
3. THE EXACT MARKER LIMITS, SPACING, AND COLOR SHOULD BE INCLUDED IN THE PLANS.
4. MARKERS SHOULD NOT BE USED ALONGSIDE CURBS EXCEPT FOR EXTREMELY SHORT SECTIONS OF CURBS WHERE NOT MORE THAN TWO MARKERS WOULD BE INVOLVED.



LEFT TURN

* SEE TWO-LANE/TWO-WAY WHERE MARKERS CONTINUE
 ** WHERE THE MEDIAN WIDTH IS 6' (2 m) OR LESS USE TWO-WAY MARKERS.

All dimensions are in inches (millimeters) unless otherwise shown.

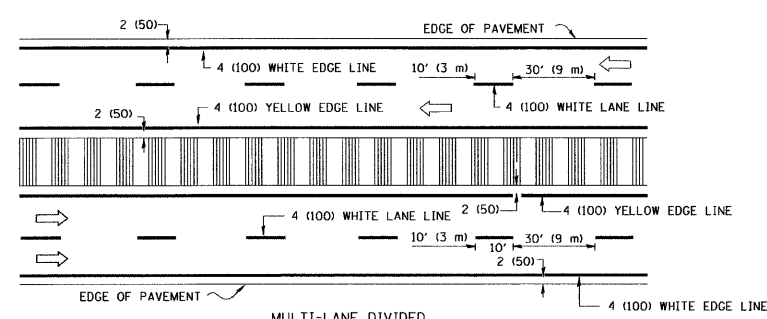
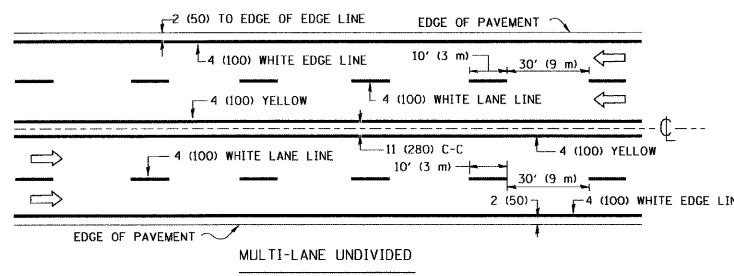
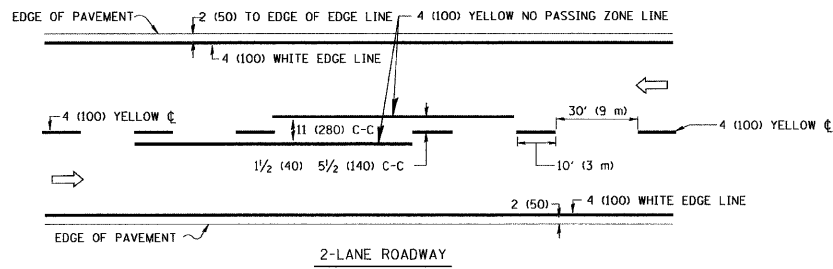
FILE NAME =	USER NAME = drivakosgn	DESIGNED -	REVISED - T. RAMMACHER 09-19-94
ct:\pwwork\pwwork\drivakosgn\0106315\td.l.dgn		DRAWN -	REVISED - T. RAMMACHER 03-12-99
PLOT SCALE = 50,000' / IN.		CHECKED -	REVISED - T. RAMMACHER 01-06-00
PLOT DATE = 9/9/2009		DATE -	REVISED - C. JUCIUS 09-09-09

STATE OF ILLINOIS
 DEPARTMENT OF TRANSPORTATION

TYPICAL APPLICATIONS
 RAISED REFLECTIVE PAVEMENT MARKERS (SNOW-PLOW RESISTANT)

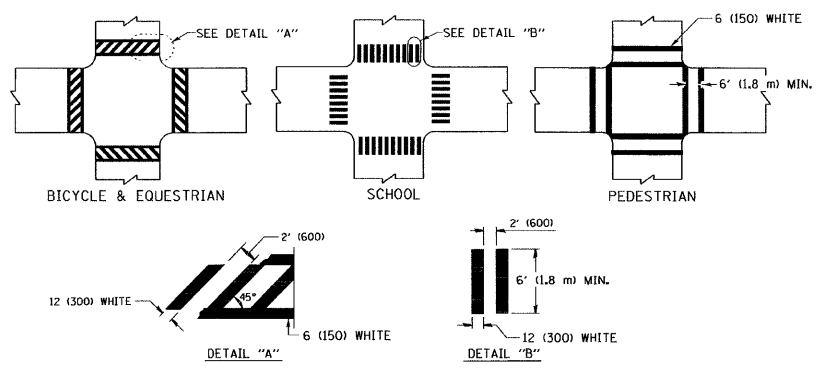
SCALE: NONE SHEET NO. 1 OF 1 SHEETS STA. TO STA.

F.A.P. RTE.	SECTION	COUNTY	TOTAL SHEETS	SHEET NO.
303	2010-116-1	LAKE	23	19
TC-11		CONTRACT NO. 60M50		
FED. ROAD DIST. NO. 1 ILLINOIS FED. AID PROJECT				

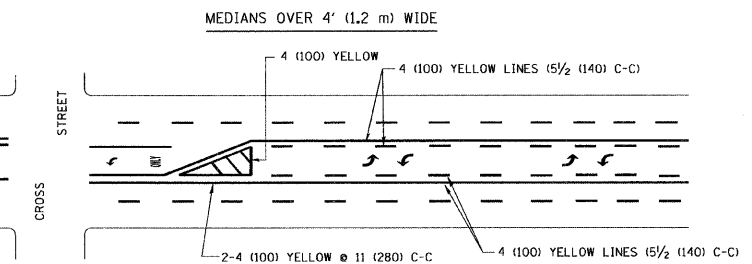
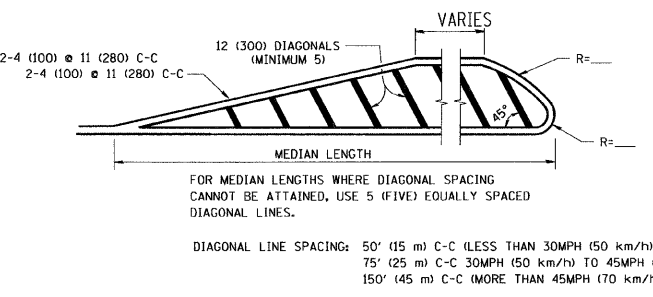
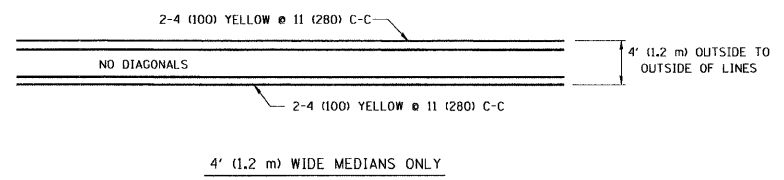


NOTE: MEDIANS WITH BARRIER CURB DO NOT REQUIRE AN EDGE LINE

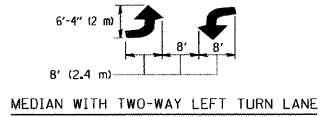
TYPICAL LANE AND EDGE LINE MARKING



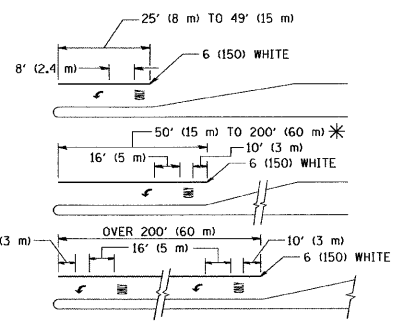
TYPICAL CROSSWALK MARKING



A MINIMUM OF TWO PAIRS OF TURN ARROWS SHALL BE USED, WHITE IN COLOR. ADDITIONAL PAIRS SHALL BE PLACED AT 200' (60 m) TO 300' (90 m) INTERVALS.



TYPICAL PAINTED MEDIAN MARKING

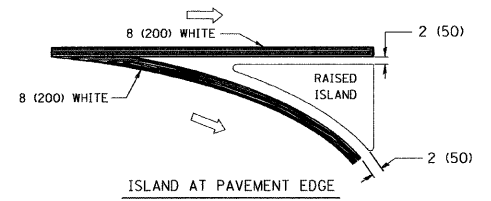
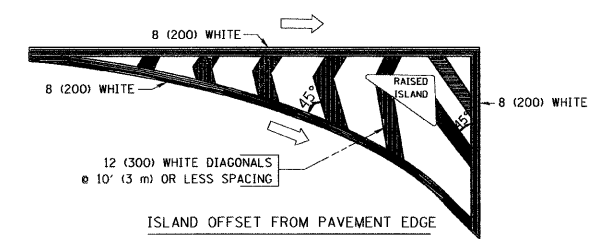


FULL SIZE LETTERS 8' (2.4 m) AND ARROWS SHALL BE USED. AREA = 15.6 SQ. FT. (1.5 m²) ONLY AREA = 20.8 SQ. FT. (1.9 m²)

* TURN LANES IN EXCESS OF 400' (120 m) IN LENGTH MAY HAVE AN ADDITIONAL SET OF ARROW - "ONLY" INSTALLED MIDWAY BETWEEN THE OTHER TWO SETS OF ARROW - "ONLY".

TYPICAL LEFT (OR RIGHT) TURN LANE

TYPICAL TURN LANE MARKING

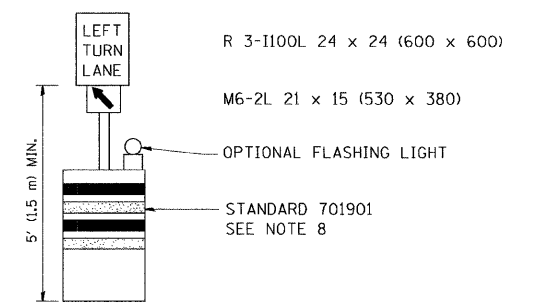
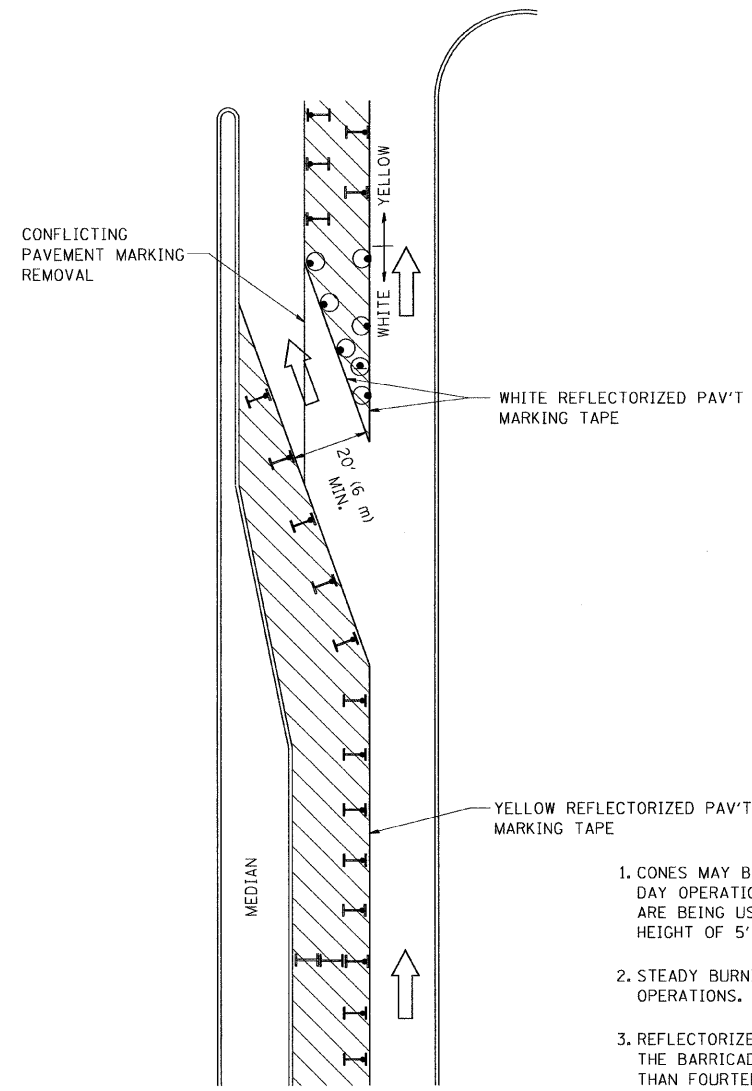


TYPICAL ISLAND MARKING

TYPE OF MARKING	WIDTH OF LINE	PATTERN	COLOR	SPACING / REMARKS
CENTERLINE ON 2 LANE PAVEMENT	4 (100)	SKIP-DASH	YELLOW	10' (3 m) LINE WITH 30' (9 m) SPACE
CENTERLINE ON MULTI-LANE UNDIVIDED PAVEMENT	2 @ 4 (100)	SOLID	YELLOW	11 (280) C-C
NO PASSING ZONE LINES: FOR ONE DIRECTION FOR BOTH DIRECTIONS	4 (100) 2 @ 4 (100)	SOLID SOLID	YELLOW YELLOW	5/2 (140) C-C FROM SKIP-DASH CENTERLINE 11 (280) C-C OMIT SKIP-DASH CENTERLINE BETWEEN
LANE LINES	4 (100) 5 (125) ON FREEWAYS	SKIP-DASH SKIP-DASH	WHITE WHITE	10' (3 m) LINE WITH 30' (9 m) SPACE
DOTTED LINES (EXTENSIONS OF CENTER, LANE OR TURN LANE MARKINGS)	SAME AS LINE BEING EXTENDED	SKIP-DASH	SAME AS LINE BEING EXTENDED	2' (600) LINE WITH 6' (1.8 m) SPACE
EDGE LINES	4 (100)	SOLID	YELLOW-LEFT WHITE-RIGHT	OUTLINE MOUNTABLE MEDIANS IN YELLOW; EDGE LINES ARE NOT USED NEXT TO BARRIER CURB
TURN LANE MARKINGS	6 (150) LINE; FULL SIZE LETTERS & SYMBOLS (8' (2.4m))	SOLID	WHITE	SEE TYPICAL TURN LANE MARKING DETAIL
TWO WAY LEFT TURN MARKING	2 @ 4 (100) EACH DIRECTION	SKIP-DASH AND SOLID	YELLOW	10' (3 m) LINE WITH 30' (9 m) SPACE FOR SKIP-DASH; 5/2 (140) C-C BETWEEN SOLID LINE AND SKIP-DASH LINE
	8' (2.4m) LEFT ARROW	IN PAIRS	WHITE	SEE TYPICAL TWO-WAY LEFT TURN MARKING DETAIL
CROSSWALK LINES (PEDESTRIAN) A. DIAGONALS (BIKE & EQUESTRIAN) B. LONGITUDINAL BARS (SCHOOL)	2 @ 6 (150) 12 (300) @ 45° 12 (300) @ 90°	SOLID SOLID SOLID	WHITE WHITE WHITE	NOT LESS THAN 6' (1.8 m) APART 2' (600) APART 2' (600) APART SEE TYPICAL CROSSWALK MARKING DETAILS.
STOP LINES	24 (600)	SOLID	WHITE	PLACE 4' (1.2 m) IN ADVANCE OF AND PARALLEL TO CROSSWALK, IF PRESENT. OTHERWISE, PLACE AT DESIRED STOPPING POINT. PARALLEL TO CROSSROAD CENTERLINE, WHERE POSSIBLE.
PAINTED MEDIANS	2 @ 4 (100) WITH 12 (300) DIAGONALS @ 45° NO DIAGONALS USED FOR 4' (1.2 m) WIDE MEDIANS	SOLID	YELLOW: TWO WAY TRAFFIC WHITE: ONE WAY TRAFFIC	11 (280) C-C FOR THE DOUBLE LINE SEE TYPICAL PAINTED MEDIAN MARKING.
GORE MARKING AND CHANNELIZING LINES	8 (200) WITH 12 (300) DIAGONALS @ 45°	SOLID	WHITE	DIAGONALS: 15' (4.5 m) C-C (LESS THAN 30MPH (50 km/h)) 20' (6 m) C-C 30MPH (50 km/h) TO 45MPH (70 km/h) 30' (9 m) C-C (OVER 45MPH (70 km/h))
RAILROAD CROSSING	24 (600) TRANSVERSE LINES; "RR" IS 6' (1.8 m) LETTERS; 16 (400) LINE FOR "X"	SOLID	WHITE	SEE STATE STANDARD 780001 AREA OF: "R"=3.6 SQ. FT. (0.33 m ²) EACH "X"=54.0 SQ. FT. (5.0 m ²)
SHOULDER DIAGONALS	12 (300) @ 45°	SOLID	WHITE - RIGHT YELLOW - LEFT	50' (15 m) C-C (LESS THAN 30MPH (50 km/h)) 75' (25 m) C-C (30 MPH (50 km/h) TO 45MPH (70 km/h)) 150' (45 m) C-C (OVER 45MPH (70 km/h))

FOR FURTHER DETAILS ON PAVEMENT MARKING REFER TO STANDARD SPECIFICATIONS FOR ROAD AND BRIDGE CONSTRUCTION AND STATE STANDARD 780001.

All dimensions are in inches (millimeters) unless otherwise shown.

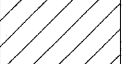
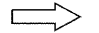
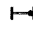





GENERAL NOTES

1. CONES MAY BE SUBSTITUTED FOR BARRICADES OR DRUMS AT HALF THE SPACING DURING DAY OPERATIONS. CONES SHALL BE A MINIMUM OF 28 (710) IN HEIGHT. WHEN CONES ARE BEING USED, THE "LEFT TURN LANE" SIGN MAY BE SKID MOUNTED AT A MINIMUM HEIGHT OF 5' (1.5 m).
2. STEADY BURNING LIGHTS WILL NOT BE REQUIRED ON BARRICADES OR DRUMS FOR DAY OPERATIONS. ALL LIGHTS SHALL BE MONODIRECTIONAL.
3. REFLECTORIZED TEMPORARY PAVEMENT MARKING TAPE SHALL BE PLACED THROUGHOUT THE BARRICADED AREA OF EACH TURN BAY WHERE THE CLOSURE TIME IS GREATER THAN FOURTEEN DAYS.
4. THIS APPLICATION ALSO APPLIES WHEN WORK IS BEING PERFORMED IN THE RIGHT LANE(S) AND THE RIGHT TURN BAY IS TO REMAIN OPEN. UNDER THIS CONDITION, "RIGHT TURN LANE" R3-100 24 x 24 (600 x 600) AND M6-2R 21 x 15 (530 x 380) SHALL BE USED.
5. THESE CONTROLS SHALL SUPPLEMENT MAINLINE TRAFFIC CONTROL FOR LANE CLOSURES.
6. LONGITUDINAL DIMENSIONS MAY BE ADJUSTED TO FIT FIELD CONDITIONS.
7. FORM OPER 725 IS REQUIRED.
8. IF A DRUM OR TYPE II BARRICADE WITH AN ATTACHED SIGN PANEL WHICH MEETS NCHRP 350 REQUIREMENTS IS NOT AVAILABLE, THE SIGNS SHALL BE MOUNTED, ABOVE THE BARRICADES, ON SEPARATE SIGNS SUPPORTS THAT MEET NCHRP 350 PREQUIREMENTS.
9. TRAFFIC CONTROL AND PROTECTION AT TURN BAYS (TO REMAIN OPEN TO TRAFFIC) SHALL BE INCLUDED IN THE COST SPECIFIED TRAFFIC CONTROL STANDARDS OR ITEMS.

All dimensions are in inches (millimeters) unless otherwise shown.

LEGEND

-  WORK AREA
-  LANE OPEN TO TRAFFIC
-  TYPE I OR II BARRICADE WITH STEADY BURN LIGHT
-  DRUM WITH STEADY BURN LIGHT
-  DRUM WITH SIGN (WITH OPTIONAL FLASHING LIGHT) SEE DETAIL
-  TYPE I OR II CHECK BARRICADE WITH FLASHING LIGHT

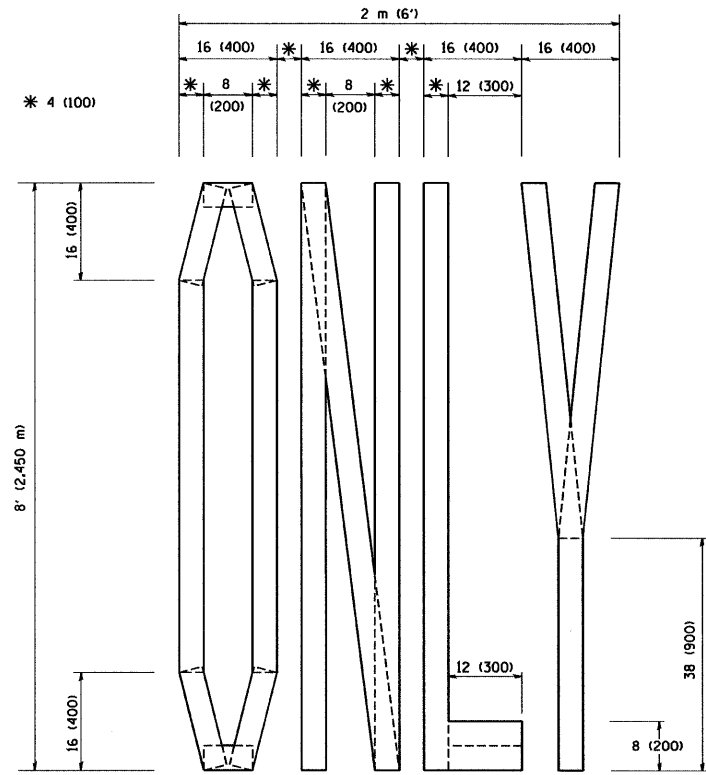
FILE NAME =	USER NAME = drivakosgn	REVISED -T. RAMMACHER 09-08-94	REVISED - R. BORO 09-14-09
c:\pw_work\PWIDOT\DRIVAKOSGN\0108315\14.dgn		REVISED - A. HOUSEH 11-07-95	REVISED -
		REVISED - A. HOUSEH 10-12-96	REVISED -
PLOT SCALE = 49.9999 1/ IN.		REVISED -T. RAMMACHER 01-06-00	REVISED -
PLOT DATE = 9/14/2009			

**STATE OF ILLINOIS
DEPARTMENT OF TRANSPORTATION**

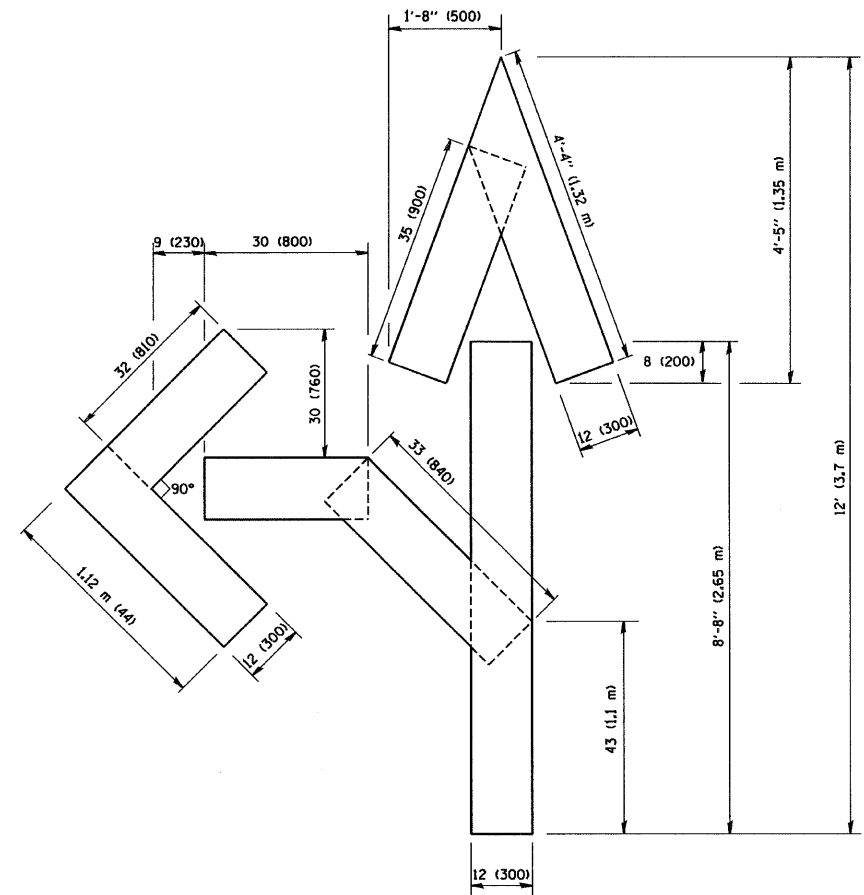
**TRAFFIC CONTROL AND PROTECTION AT TURN BAYS
(TO REMAIN OPEN TO TRAFFIC)**

SCALE: NONE SHEET NO. 1 OF 1 SHEETS STA. TO STA.

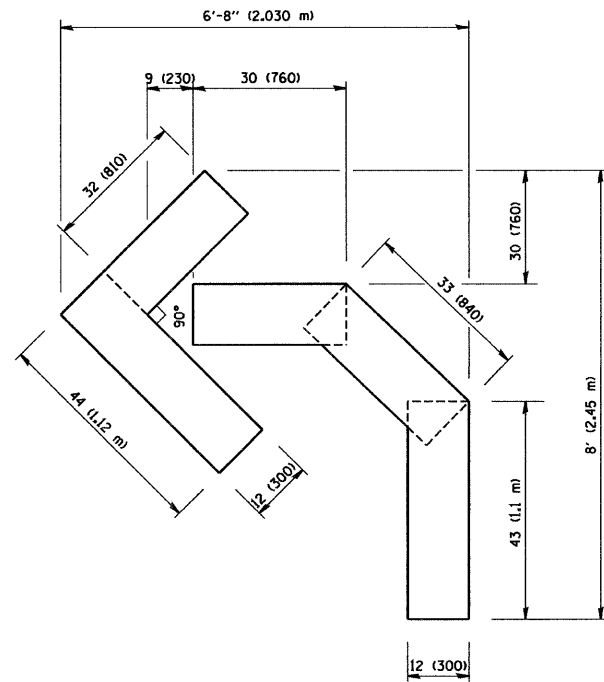
F.A.P. RTE.	SECTION	COUNTY	TOTAL SHEETS	SHEET NO.
303	2010-116-1	LAKE	23	21
TC-14		CONTRACT NO. 60M50		
FED. ROAD DIST. NO. 1 ILLINOIS FED. AID PROJECT				



QUANTITY
 4 (100) LINE = 64.1 ft. (19.7 m)
 21.1 sq. ft. (1.97 sq. m)



QUANTITY
 4 (100) LINE = 82.5 ft. (25.3 m)
 27.5 sq. ft. (2.53 sq. m)

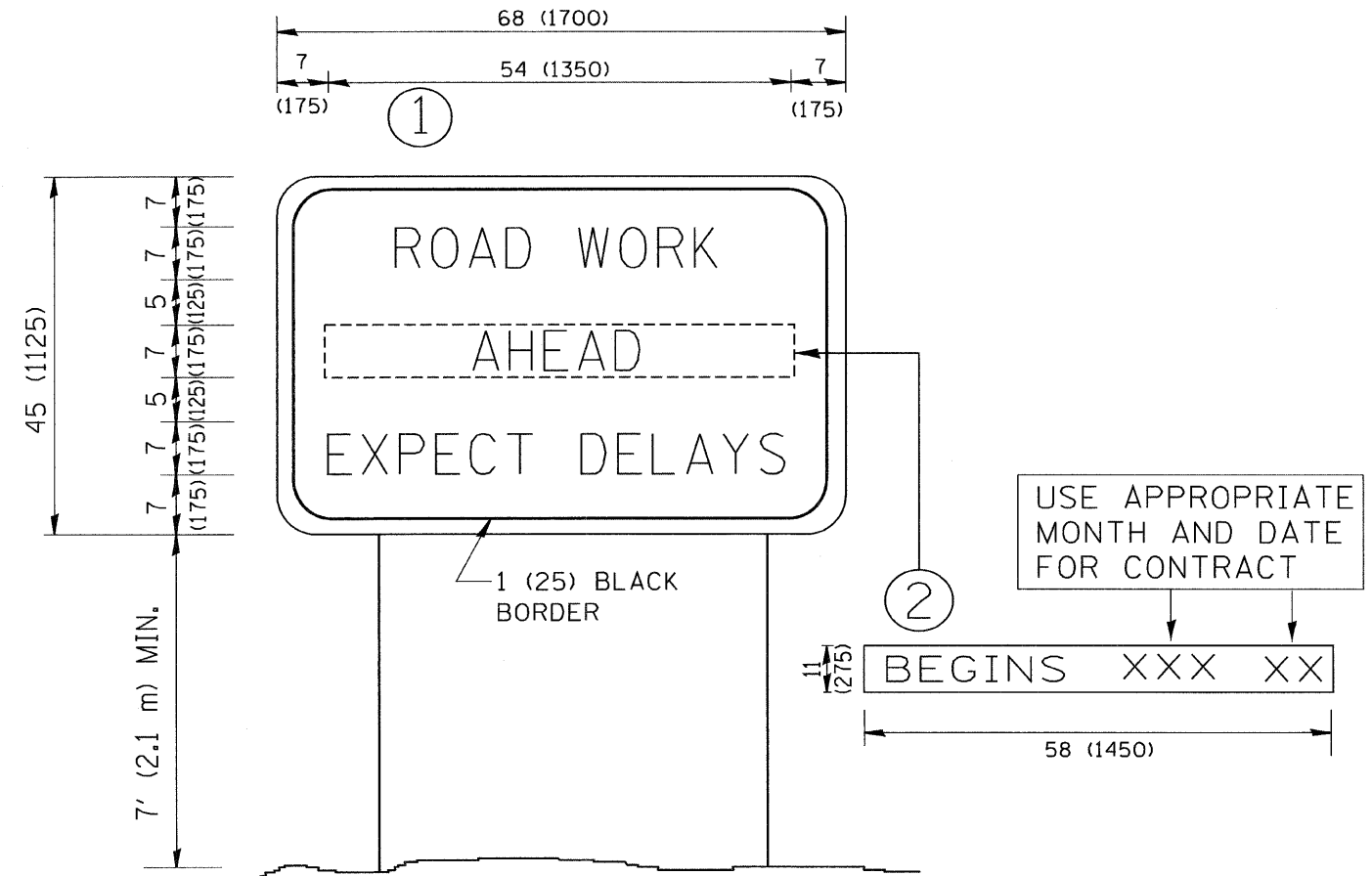


QUANTITY
 4 (100) LINE = 45.5 ft. (13.9 m)
 15.2 sq. ft. (1.39 sq. m)

All dimensions are in inches (millimeters) unless otherwise shown.

FILE NAME = W:\diststd\22x34\1c16.dgn	USER NAME = gaglionabt	DESIGNED -	REVISED -T. RAMMACHER 06-05-96	STATE OF ILLINOIS DEPARTMENT OF TRANSPORTATION	PAVEMENT MARKING LETTERS AND SYMBOLS FOR TRAFFIC STAGING			F.A.P. RTE.	SECTION	COUNTY	TOTAL SHEETS	SHEET NO.	
	PLOT SCALE = 50.0000 "/ IN.	DRAWN -	REVISED -T. RAMMACHER 11-04-97		SCALE: NONE	SHEET NO. 1 OF 1 SHEETS	STA.	TO STA.	303	2010-116-I	LAKE	23	21a
	PLOT DATE = 1/4/2008	CHECKED -	REVISED -T. RAMMACHER 03-02-98						TC-16		CONTRACT NO. 60M50		
		DATE - 09-18-94	REVISED -E. GOMEZ 08-28-00						FED. ROAD DIST. NO. 1 ILLINOIS FED. AID PROJECT				

1-24-2011



NOTES:

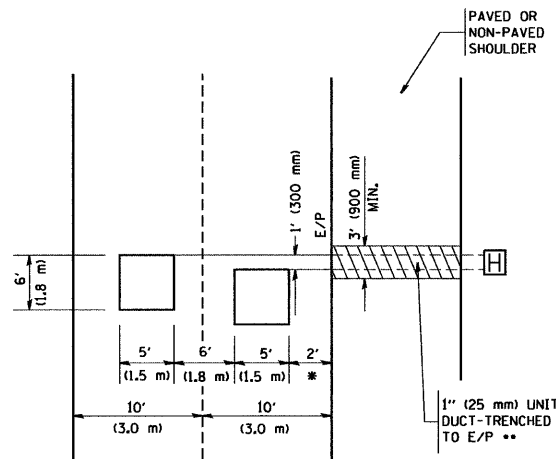
1. USE BLACK LETTERING ON ORANGE BACKGROUND.
2. ERECT SIGNS IN ADVANCE OF THE LOCATION FOR THE "ROAD CONSTRUCTION AHEAD" SIGN AT LOCATIONS AS DIRECTED BY THE ENGINEER.
3. ERECT SIGN ① WITH INSTALLED PANEL ② ONE WEEK PRIOR TO THE START OF CONSTRUCTION.
4. REMOVE PANEL ② SOON AFTER THE START OF CONSTRUCTION.
5. SEE SPECIAL PROVISION FOR "TEMPORARY INFORMATION SIGNING" FOR ADDITIONAL INFORMATION.
6. ONE SIGN ASSEMBLY EQUALS 25.70 SQ. FT. (2.3 SQ. M.)
7. SHALL BE PAID FOR AS TEMPORARY INFORMATION SIGNING.

ALL DIMENSIONS ARE IN INCHES (MILLIMETERS) UNLESS OTHERWISE SHOWN.

FILE NAME = M:\diststd\22x34\tc22.dgn	USER NAME = geglianobt	DESIGNED -	REVISED - R. MIRS 09-15-97	STATE OF ILLINOIS DEPARTMENT OF TRANSPORTATION	ARTERIAL ROAD INFORMATION SIGN			F.A.P. RTE. 303	SECTION 2010-116-1	COUNTY LAKE	TOTAL SHEETS 23	SHEET NO. 22
	PLOT SCALE = 50.000' / IN.	DRAWN -	REVISED - R. MIRS 12-11-97		SCALE: NONE			TC-22		CONTRACT NO. 60M50		
	PLOT DATE = 1/4/2008	CHECKED -	REVISED - T. RAMMACHER 02-02-99		SHEET NO. 1 OF 1 SHEETS			FED. ROAD DIST. NO. 1 ILLINOIS FED. AID PROJECT				
		DATE -	REVISED - C. JUCIUS 01-31-07		STA. TO STA.							

LOOPS NEXT TO SHOULDERS

PROVIDE A PAVEMENT REPLACEMENT
NOTE WHICH SHOULD EQUAL
3' (900 mm) X WIDTH OF
PAVED SHOULDER.



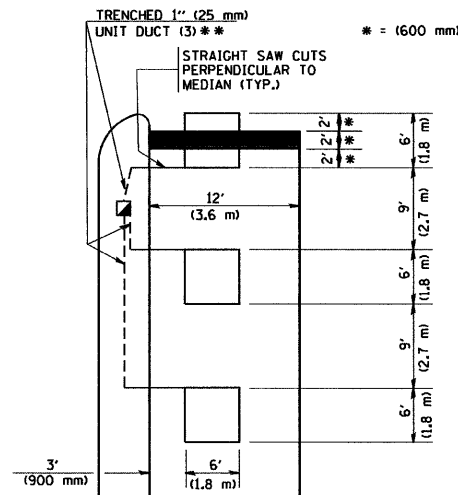
* = (600 mm)

** UNIT DUCT IS TO BE SHOWN ON PLAN SHEETS
BUT SHALL NOT BE INCLUDED IN THE PAY ITEMS.

**LEFT TURN LANES WITH MEDIANS
VOLUME DENSITY ("FAR OUT" DETECTION)
ON SAME APPROACH**

(PROTECTED / PERMITTED LEFT TURN PHASING)

HANDHOLE LOCATION MAY
VARY DEPENDING ON GEOMETRICS
AND DESIGN OF TRAFFIC SIGNALS.
HEAVY-DUTY HANDHOLES TO BE
USED WHEN THE MEDIAN IS
MOUNTABLE. REFER TO STANDARD
S14001 TO ENSURE THAT HANDHOLE
FITS IN MEDIAN.

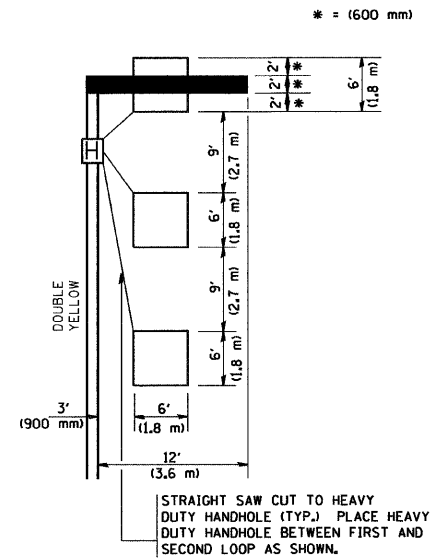


** UNIT DUCT IS TO BE SHOWN ON PLAN SHEETS
BUT SHALL NOT BE INCLUDED IN THE PAY ITEMS.

NOTE: DUAL LEFT TURNS NOT SHOWN REFER TO
PLAN SHEET FOR DETECTOR LOOP REPLACEMENT

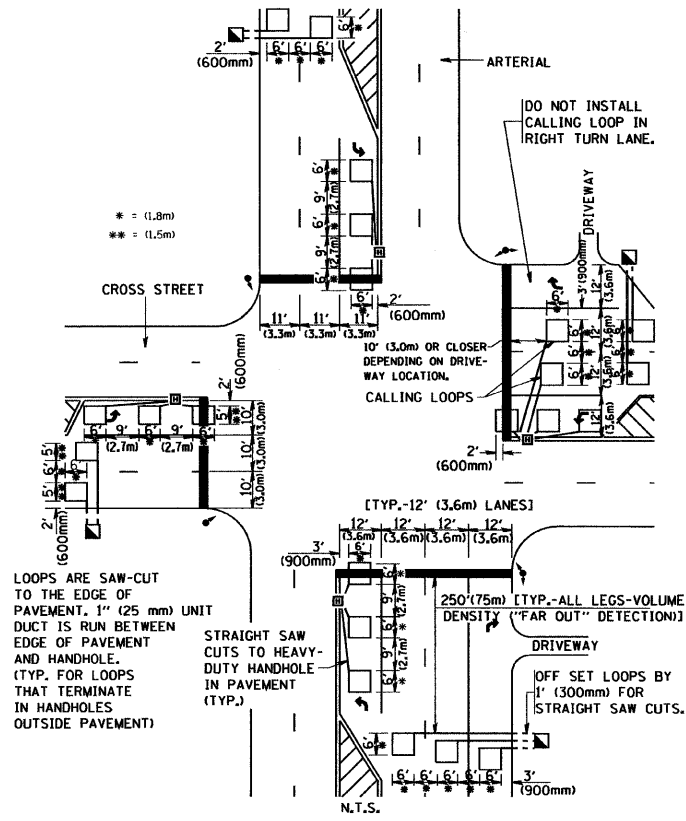
**LEFT TURN LANES WITHOUT MEDIANS
VOLUME DENSITY ("FAR OUT" DETECTION)
ON SAME APPROACH**

(PROTECTED / PERMITTED LEFT TURN PHASING)



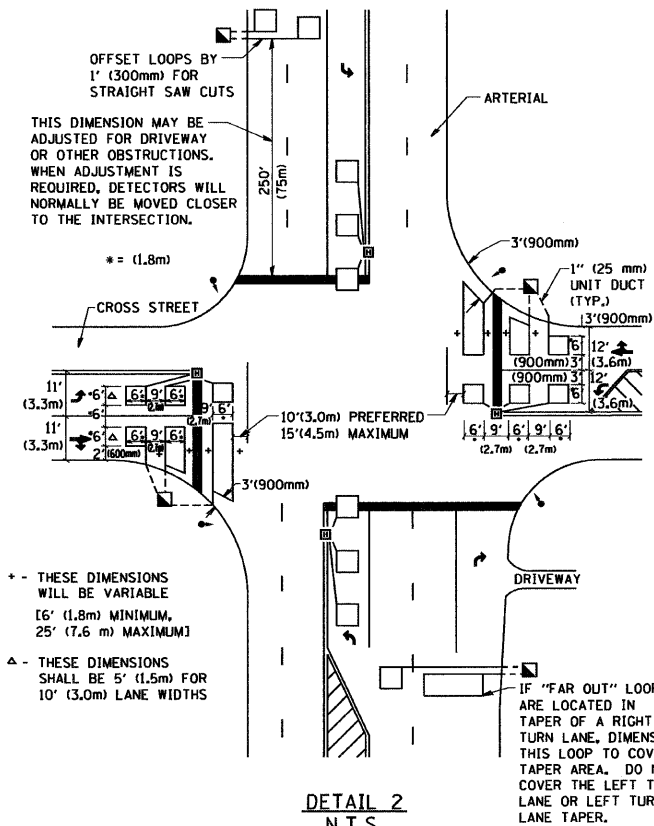
NOTE: DUAL LEFT TURNS NOT SHOWN REFER TO
PLAN SHEET FOR DETECTOR LOOP REPLACEMENT

**ARTERIAL-VOLUME DENSITY ("FAR OUT" DETECTION)
CROSS STREET-VOLUME DENSITY ("FAR OUT" DETECTION)**



DETAIL 1
N.T.S.

**ARTERIAL-VOLUME DENSITY ("FAR OUT" DETECTION)
CROSS STREET-NON VOLUME DENSITY ("UPTIGHT" PRESENCE DETECTION)**



DETAIL 2
N.T.S.

NOTES:

VEHICLES LOOP DETECTORS

- * ALL LEAD IN CABLE SHALL BE TWO CONDUCTOR NO. 14 TWISTED, SHIELDED.
- * EACH DETECTOR LOOP SHALL HAVE ITS OWN SAW CUT FROM THE LOOP TO THE EDGE OF PAVEMENT OR TO A HANDHOLE IN THE PAVEMENT.
- * EACH DETECTOR LOOP SHALL HAVE ITS OWN ONE INCH (25 mm) UNIT DUCT BETWEEN THE EDGE OF PAVEMENT AND THE FIRST HANDHOLE OR JUNCTION BOX. EACH UNIT DUCT RUN SHALL BE SHOWN ON THE PLANS BY THE DESIGNER, BUT SHALL NOT BE PAID FOR SEPARATLY. THIS ITEM IS INCIDENTAL TO THE PAY ITEM FOR DETECTOR LOOPS.
- * ONE DIMENSION OF ALL DETECTOR LOOPS SHALL BE SIX FEET (1.8 m)
- * EACH LANE OF NON-LOCKING, PRESENCE DETECTION AND EACH LANE OF A DOUBLE LEFT TURN LANE REQUIRES A SEPARATE INDUCTIVE LOOP DETECTOR AND LEAD IN CABLE.
- * WHEN NON-LOCKING, PRESENCE DETECTION IS USED, MORE THAN ONE LOOP PER LANE IS REQUIRED BEHIND THE STOP BAR (i.e. 1-1/2, 1-3/4, 2).
- * WHEN SYSTEM LOOPS ARE REQUIRED ON AN APPROACH OF AN INTERSECTION, THE LOOPS USED FOR VOLUME DENSITY AND INTERSECTION TIMING SHALL ALSO BE USED AS SYSTEM DETECTORS. EACH ONE OF THESE TYPE OF LOOPS REQUIRES A SEPARATE TWO CONDUCTOR NO. 14 TWISTED SHIELDED CABLE AND A SEPARATE INDUCTIVE LOOP DETECTOR WHEN NEW CONTROLLERS ARE UTILIZED. THE DESIGNER SHALL LABEL THESE TYPES OF LOOPS AS "INTERSECTION AND SAMPLING (SYSTEM) DETECTORS" ON THE SIGNAL LAYOUT, THE INTERCONNECT PLAN AND THE SYSTEM CABLE PLAN. WHEN AN EXISTING CONTROLLER IS UTILIZED FOR THIS TYPE OF DETECTION, THE PAY ITEM "INDUCTIVE LOOP DETECTOR WITH SYSTEM OUTPUT" SHOULD BE USED.

PLACEMENT OF DETECTORS

THE FOLLOWING FIGURES REPRESENT THE MOST COMMON DETECTOR LOOP LOCATIONS AND SIZES. ADJUSTMENTS WILL BE NECESSARY FOR SPECIFIC GEOMETRIC CONSIDERATIONS.

LOCATIONS AND DEMENSIONS OF DETECTOR LOOPS ARE REQUIRED ON ALL SIGNAL LAYOUT PLAN SHEETS.

"FAR OUT" DETECTION REFERS TO LOCKING, PRESENCE TYPE DETECTION LOCATED IN THRU LANES, RIGHT TURN LANES, AND RIGHT TURN LANE TAPER AREAS (IF APPLICABLE), USUALLY 250' (75 m) IN ADVANCE OF STOP BARS. "UPTIGHT" DETECTION REFERS TO NON-LOCKING PRESENCE TYPE DETECTION LOCATED IN ALL LANES AND 10'-15' (3.0 m-4.5 m) BEHIND THE CROSSING STREET'S EDGE OF PAVEMENT EXTENDED.

NOTE:

ALL DETAILS AND NOTES SHOWN ARE FROM THE I.D.O.T. DISTRICT 1 TRAFFIC SIGNAL DESIGN GUIDELINES DATED JANUARY 1995

THIS DRAWING HAS BEEN PREPARED TO ASSIST THE RESIDENT ENGINEER FOR ALL ROADWAY RESURFACING OR S.M.A.R.T. PROJECTS WHERE THE DIMENSIONS ARE NOT SHOWN ON THE PLANS AND THE FINAL LOCATIONS FOR CROSSWALKS OR STOP BARS ARE NOT DETERMINED.

FILE NAME = W:\distatd\22\34\ts07.dgn	USER NAME = gagivanob	DESIGNED -	REVISED -	STATE OF ILLINOIS DEPARTMENT OF TRANSPORTATION	DISTRICT 1 - DETECTOR LOOP INSTALLATION DETAILS FOR ROADWAY RESURFACING		F.A.P. RTE. 303	SECTION 2010-116-1	COUNTY LAKE	TOTAL SHEETS 23	SHEET NO. 23
PLOT SCALE = 50.0000' / IN.	CHECKED - R.K.F.	DRAWN -	REVISED -		SCALE: NONE	SHEET NO. 1 OF 1 SHEETS	STA.	TO STA.	TS-07		CONTRACT NO. 60M50
PLOT DATE = 1/4/2008	DATE -	REVISIONS -	REVISIONS -						FED. ROAD DIST. NO. 1 ILLINOIS FED. AID PROJECT		