

FOR INDEX OF SHEETS SEE SHEET 2

ROUTE	SECTION	COUNTY	TOTAL SHEETS	SHEET NUMBER
FAP 338	2010-123-I	DUPAGE	11	1

**STATE OF ILLINOIS
DEPARTMENT OF TRANSPORTATION
DIVISION OF HIGHWAYS
DISTRICT ONE**

PROPOSED HIGHWAY PLANS

IMPROVEMENT IS LOCATED
IN THE CITY OF WEST CHICAGO

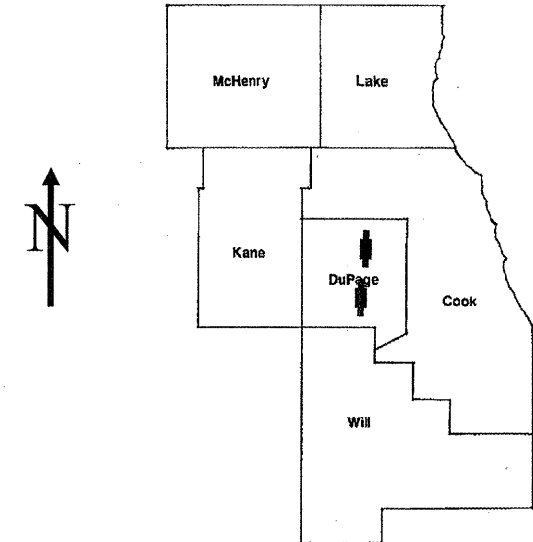
**FAP ROUTE 338: IL 59 (NELTNOR BLVD)
1) OVER UP RR (SN 022-0143)
2) OVER IL 38 (SN 022-0036)
SECTION 2010-123-I
BRIDGE FENCE INSTALLATION
DUPAGE COUNTY**

C-91-144-11

(SEE SHEET #5 FOR LOCATION MAP)

CONTRACT NO. 60M60

D-91-144-11



LOCATION OF IMPROVEMENT INDICATED THUS: 

**PROJECT ENGINEER ROBERT BORO (847) 705-4178
PROJECT MANAGER ISSAM RAYYAN**

CONTRACT NO. 60M60

STATE OF ILLINOIS
DEPARTMENT OF TRANSPORTATION
DIVISION OF HIGHWAYS
SUBMITTED: DECEMBER 30, 2010
Diane M. O'Keefe
DEPUTY DIRECTOR OF HIGHWAYS, REGION ENGINEER
February 4, 2011
Scott E. Stitt, P.E.
ENGINEER OF DESIGN AND ENVIRONMENT
February 4, 2011
Christine M. Reed
DIRECTOR, DIVISION OF HIGHWAYS

**PRINTED BY THE AUTHORITY
OF THE STATE OF ILLINOIS**

**J.U.L.I.E.: JOINT UTILITY LOCATION
INFORMATION FOR EXCAVATION
(800) 892-0123 OR 811**

ROUTE	SECTION	COUNTY	TOTAL SHEETS	SHEET NUMBER
FAP 338	2010-123-I	DUPAGE	11	2

CONTRACT 60M60

LIST OF STATE STANDARDS

INDEX OF SHEETS

<u>SHEET NO</u>	<u>DESCRIPTION</u>	<u>STANDARD NO</u>	<u>DESCRIPTION</u>
1	COVER SHEET	701301 - 04	LANE CLOSURE, 2L, 2W, SHORT TIME OPERATIONS
2	INDEX OF SHEETS, STATE STANDARDS	701601 - 07	URBAN LANE CLOSURE, MULTILANE, 1W OR 2W WITH NONTRAVERSABLE MEDIAN
3	GENERAL NOTES	701606 - 07	URBAN LANE CLOSURE, MULTILANE, 2W WITH MOUNTABLE MEDIAN
4	SUMMARY OF QUANTITIES	701801 - 04	LANE CLOSURE, MULTILANE 1W OR 2W CROSSWALK OR SIDEWALK CLOSURE
5	LOCATION MAP	701901 - 01	TRAFFIC CONTROL DEVICES
6 -7	BRIDGE REPAIR PLANS (LOC. 1, SN 022-0143)		
8-9	BRIDGE REPAIR PLANS (LOC. 2, SN 022-0036)		
10	TRAFFIC CONTROL AND PROTECTION FOR SIDE ROADS, INTERSECTIONS AND DRIVEWAYS (TC-10)		
11	ARTERIAL ROAD INFORMATION SIGN (TC-22)		

ILLINOIS DEPARTMENT OF
TRANSPORTATION

IL 59 (NELTNOR BLVD)

INDEX OF SHEETS, STATE STANDARDS

Rev.

ROUTE	SECTION	COUNTY	TOTAL SHEETS	SHEET NUMBER
FAP 338	2010-123-I	DUPAGE	11	3

CONTRACT 60M60

GENERAL NOTES

BEFORE STARTING ANY EXCAVATION, THE CONTRACTOR SHALL CALL "J.U.L.I.E." AT (800) 892-0123 OR 811 FOR FIELD LOCATIONS OF BURIED ELECTRIC, TELEPHONE AND GAS UTILITIES. (48 HOUR NOTIFICATION IS REQUIRED).

THE CONTRACTOR SHALL COORDINATE CONSTRUCTION ACTIVITIES WITH UTILITY COMPANIES AND THE CITY OF WEST CHICAGO.

THE CONTRACTOR WILL NOT BE ALLOWED TO SET UP A YARD OR FIELD OFFICE ON STATE PROPERTY WITHOUT WRITTEN PERMISSION FROM THE DEPARTMENT.

THE CONTRACTOR SHALL CONTACT THE DISTRICT ONE TRAFFIC CONTROL SUPERVISOR AT (847)705-4470 A MINIMUM OF 72 HOURS IN ADVANCE OF BEGINNING WORK.

THE CONTRACTOR SHALL BE REQUIRED TO PROVIDE ACCESS TO ABUTTING PROPERTY AT ALL TIMES DURING THE CONSTRUCTION OF THIS PROJECT.

DO NOT SCALE PLANS FOR CONSTRUCTION DIMENSIONS.

IT SHALL BE THE CONTRACTOR'S RESPONSIBILITY TO VERIFY ALL DIMENSIONS AND CONDITIONS EXISTING IN THE FIELD PRIOR TO CONSTRUCTION AND ORDERING OF MATERIALS.

PLAN DIMENSIONS AND DETAILS RELATIVE TO EXISTING PLANS ARE SUBJECT TO ROUTINE VARIATIONS. THE CONTRACTOR SHALL FIELD VERIFY EXISTING DIMENSIONS AND DETAILS AFFECTING NEW CONSTRUCTION AND MAKE NECESSARY APPROVED ADJUSTMENTS PRIOR TO CONSTRUCTION OR ORDERING OF MATERIALS. SUCH VARIATIONS SHALL NOT BE CAUSE FOR ADDITIONAL COMPENSATION FOR A CHANGE IN SCOPE OF THE WORK, HOWEVER, THE CONTRACTOR WILL BE PAID FOR THE QUANTITY ACTUALLY FURNISHED BASED UPON THE UNIT PRICE BID FOR THE WORK.

**ILLINOIS DEPARTMENT OF
TRANSPORTATION**

IL 59 (NELTNOR BLVD)

GENERAL NOTES

ROUTE	SECTION	COUNTY	TOTAL SHEETS	SHEET NUMBER
FAP 338	2010-123-I	DUPAGE	11	4

CONTRACT NO.: 60M60

SUMMARY OF QUANTITIES		CONSTRUCTION TYPE CODE: 0014			
CODE NO.	ITEMS	UNITS	80% FED./20% STATE	LOC. 1	LOC. 2
			TOTAL QUANTITIES	SN 022-0143	SN 022-0036
50901735	BRIDGE FENCE RAILING (SIDEWALK)	FOOT	538	398	140
67100100	MOBILIZATION	L SUM	1	0.5	0.5
70102625	TRAFFIC CONTROL AND PROTECTION, STANDARD 701606	L SUM	1	0.5	0.5
70102630	TRAFFIC CONTROL AND PROTECTION, STANDARD 701601	L SUM	1		1
70102640	TRAFFIC CONTROL AND PROTECTION, STANDARD 701801	L SUM	1	0.5	0.5
Z0030850	TEMPORARY INFORMATION SIGNING	SQ FT	102.8	51.4	51.4
Z0048665	RAILROAD PROTECTIVE LIABILITY INSURANCE	L SUM	1	1	

ILLINOIS DEPARTMENT OF
TRANSPORTATION

SUMMARY OF QUANTITIES

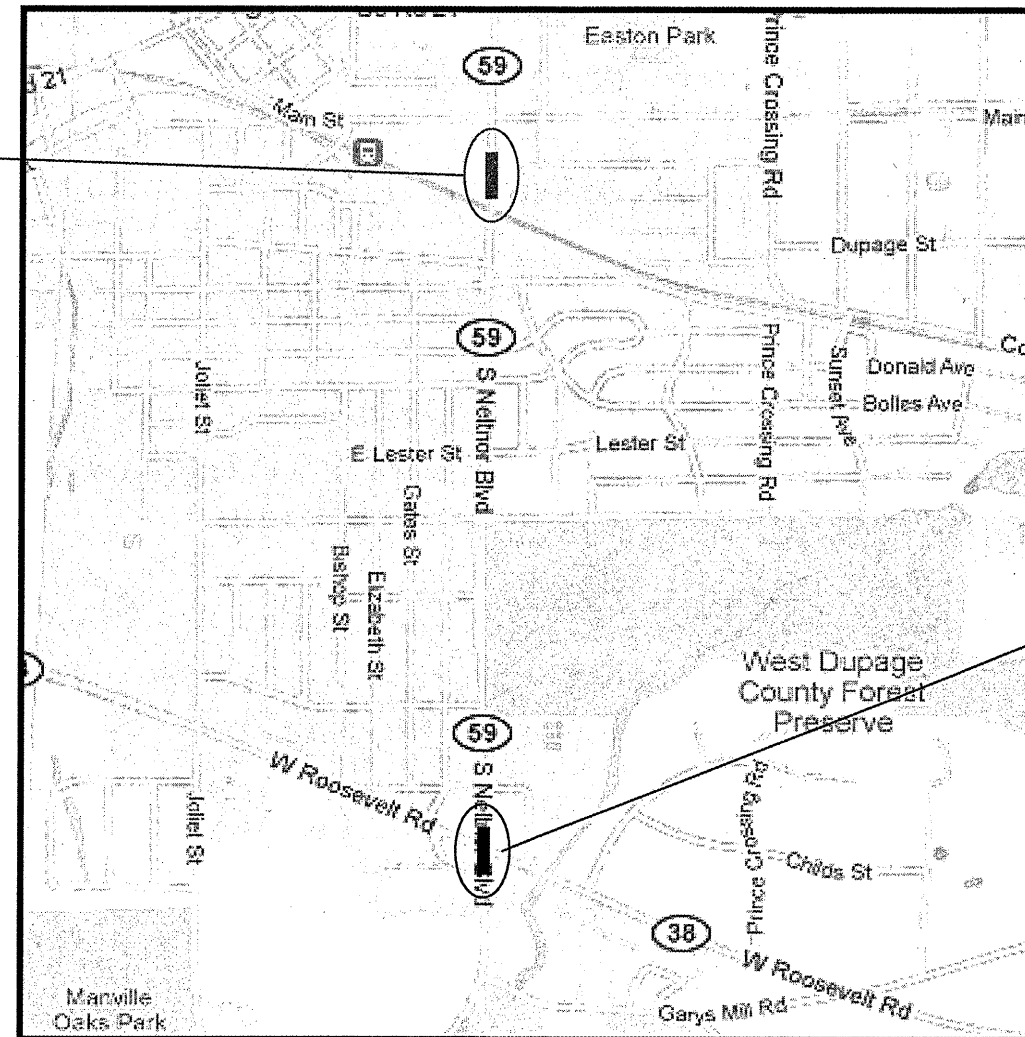
ROUTE	SECTION	COUNTY	TOTAL SHEETS	SHEET NUMBER
FAP 338	2010-123-I	DUPAGE	11	5

CONTRACT NO 60M60

R 9 E

LOCATION 1: SN 022-0143
IL 59 OVER UP RR
CITY OF WEST CHICAGO

T 39 N



LOCATION 2: SN 022-0036
IL 59 OVER IL 38
CITY OF WEST CHICAGO

TRAFFIC DATA:

IL 59 (NELTNOR BLVD)

POSTED SPEED LIMIT = 45 MPH
2009 ADT = 31700

IL 38 (ROOSEVELT RD)

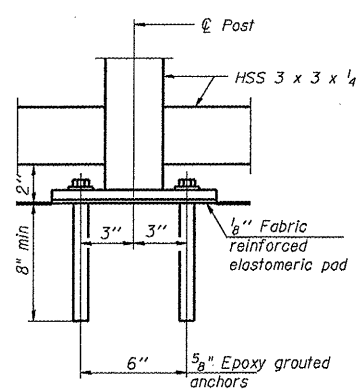
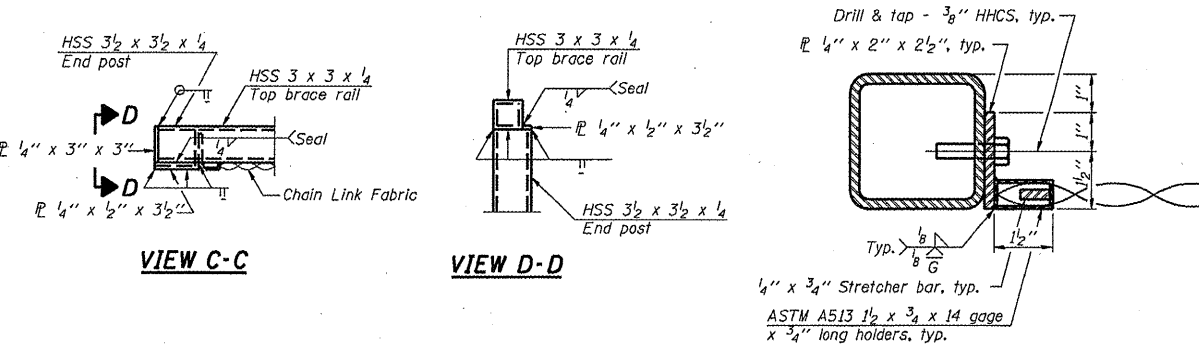
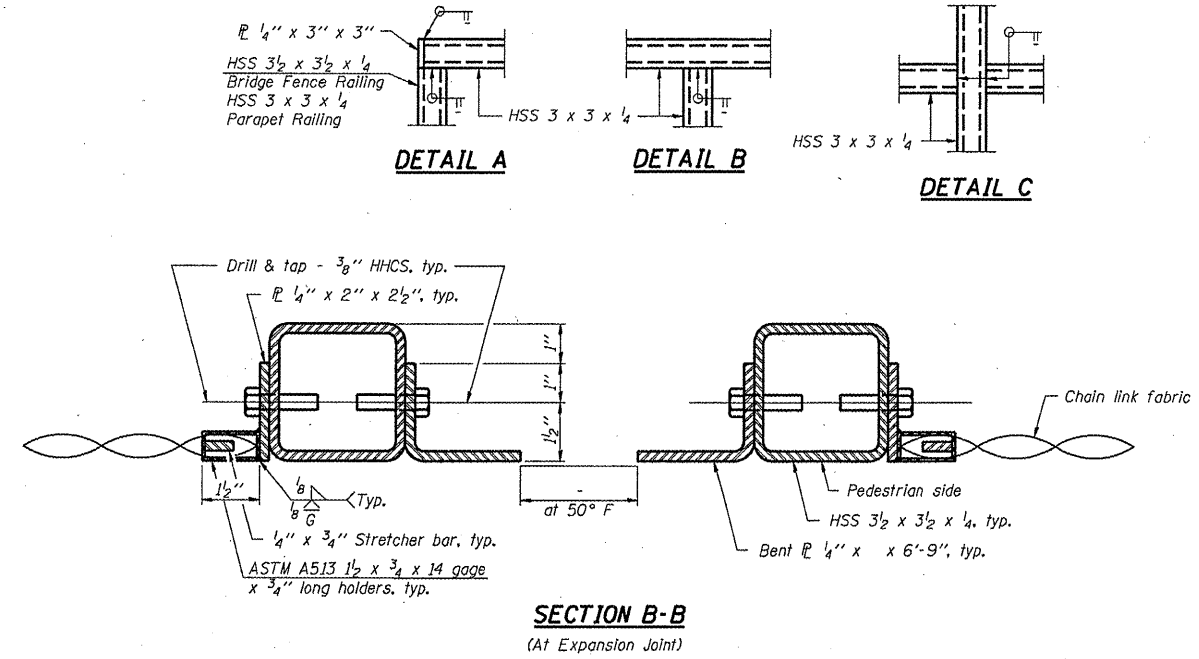
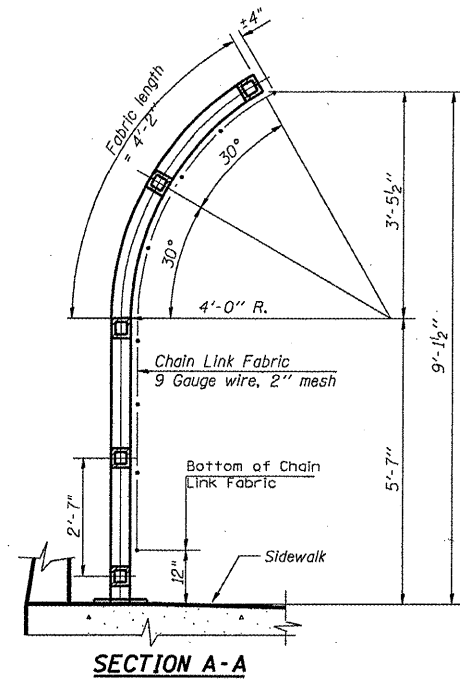
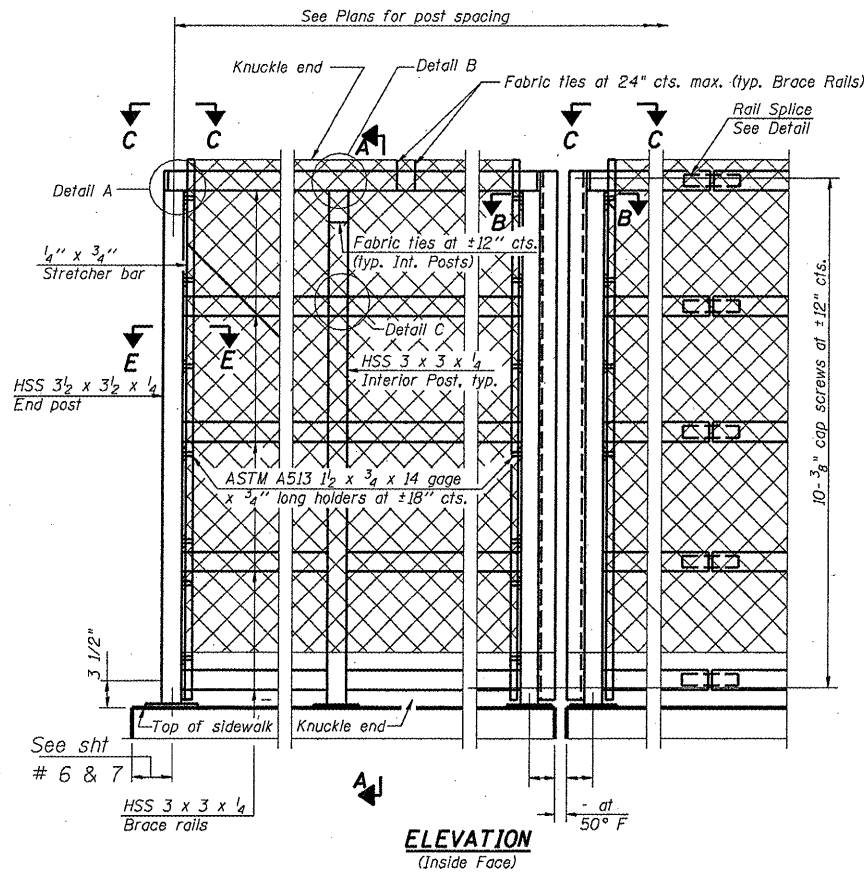
POSTED SPEED LIMIT = 45 MPH
2009 ADT = 20900

WINFIELD TOWNSHIP

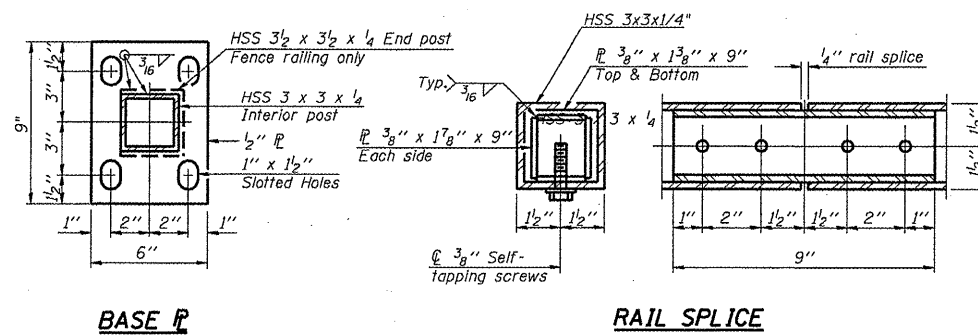
ILLINOIS DEPARTMENT OF
TRANSPORTATION

IL 59 (NELTNOR BLVD)

LOCATION MAP



ANCHOR BOLT DETAILS



BASE P

RAIL SPLICE

The Contractor shall use 5/8" diameter epoxy grouted anchors according to the Standard Specification 584.

All steel rail elements shall be galvanized according to Article 509.05 of the Standard Specifications.

BILL OF MATERIAL

Item	Unit	Total Quantity	Loc. 1
Bridge Fence Railing (Sidewalk)	Foot	398	022-0143 398

7-1-10 (10'-0" Maximum Post Spacing)

FILE NAME =	USER NAME = gorengautab	DESIGNED -	REVISED -
ca:\pwwork\pwwork\gorengautab\0208786\0164110-sht-plen.dgn	0164110-sht-plen.dgn	DRAWN -	REVISED -
	PLOT SCALE = 1/8" = 1' IN.	CHECKED -	REVISED -
	PLOT DATE = 12/8/2010	DATE -	REVISED -

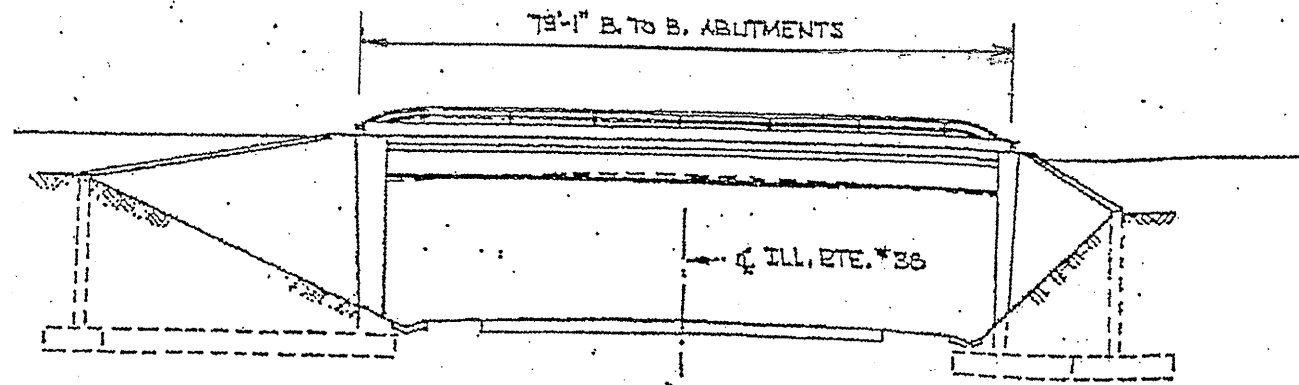
**STATE OF ILLINOIS
DEPARTMENT OF TRANSPORTATION**

BRIDGE FENCE RAILING, SIDEWALK MOUNTED (MODIFIED)			
STRUCTURE NO. 022-0143			
SCALE:	SHEET NO.	OF SHEETS	STA. TO STA.

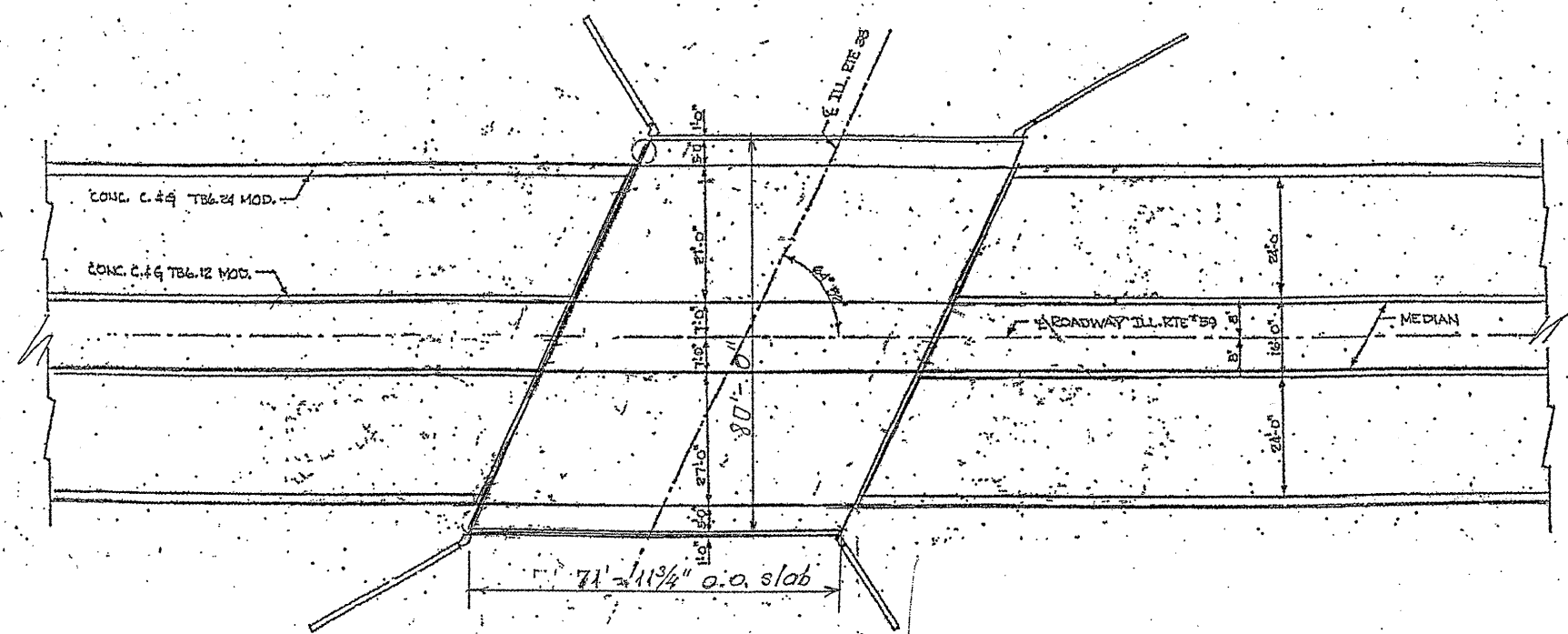
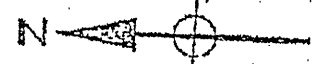
F.A.P. RTE.	SECTION	COUNTY	TOTAL SHEETS	SHEET NO.
338	2010-123-1	DUPAGE	11	7
CONTRACT NO. 60M60				
ILLINOIS FED. AID PROJECT				

ROUTE	SECTION	COUNTY	TOTAL SHEETS	SHEET NUMBER
FAP 338	2010-123-I	DUPAGE	11	8

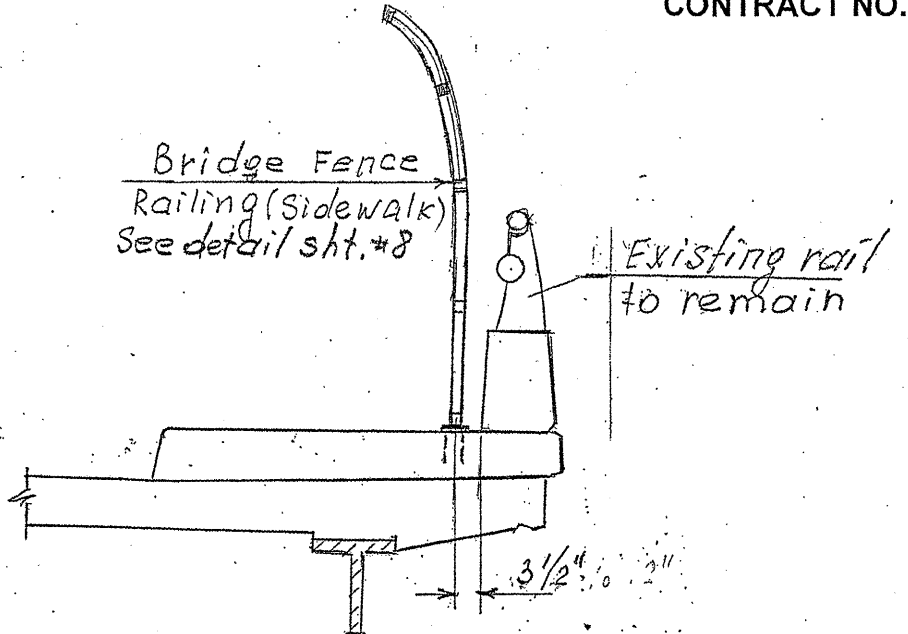
CONTRACT NO.: 60M60



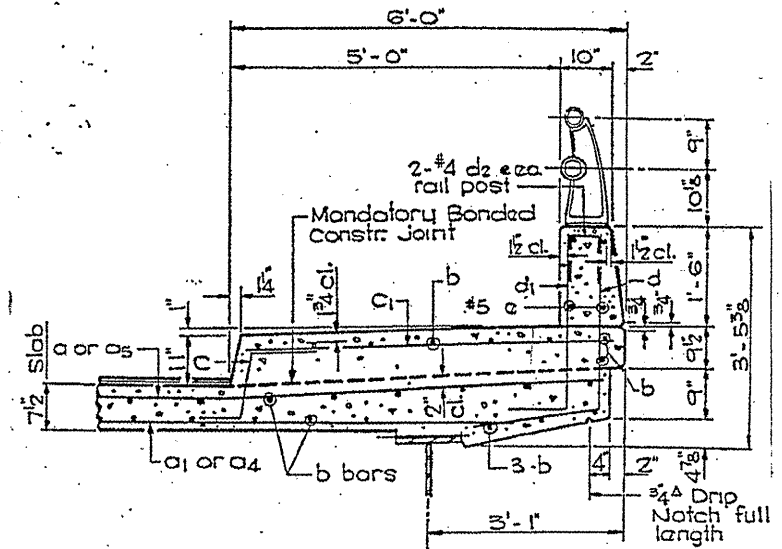
ELEVATION



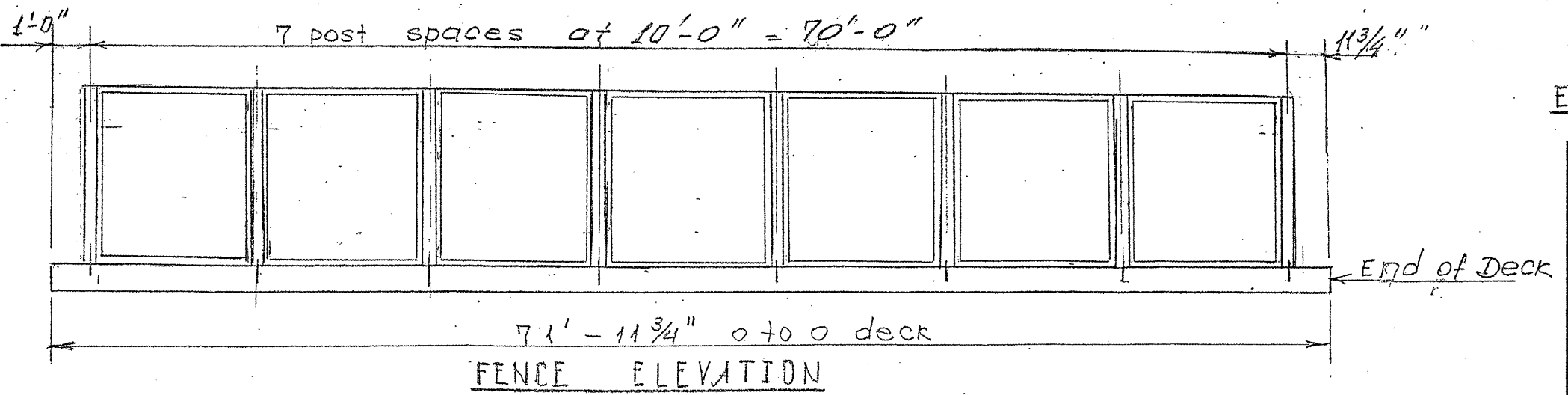
PLAN



PROPOSED SECTION THRU SIDEWALK



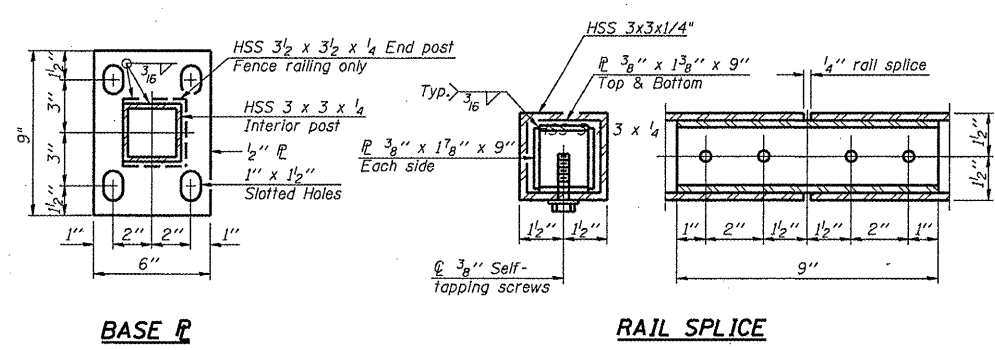
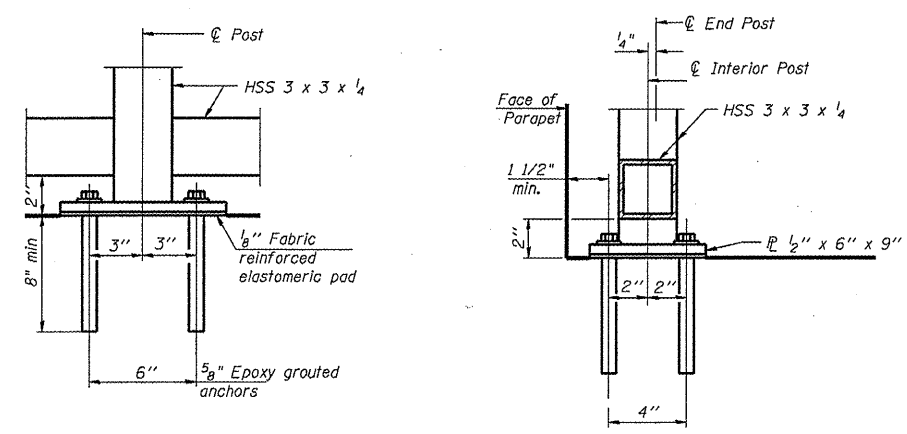
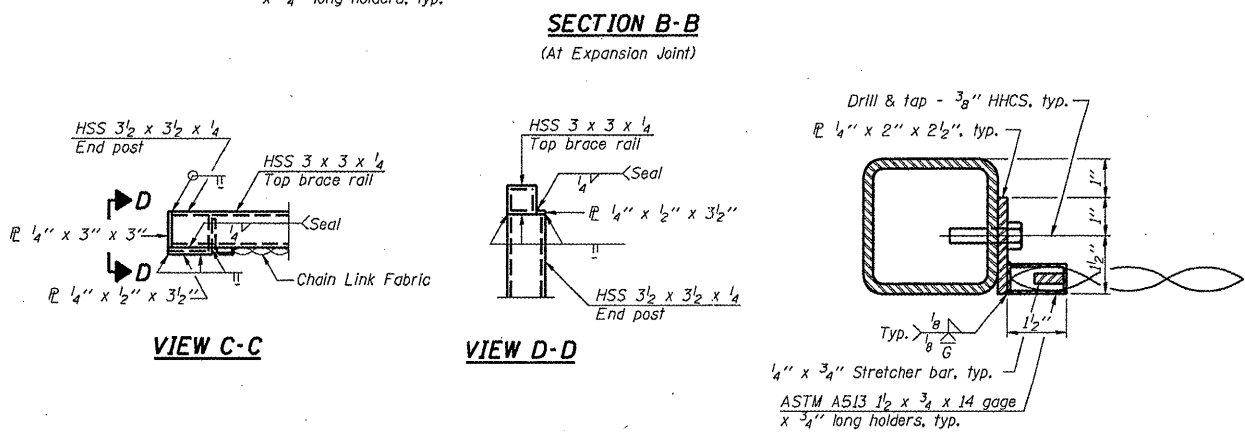
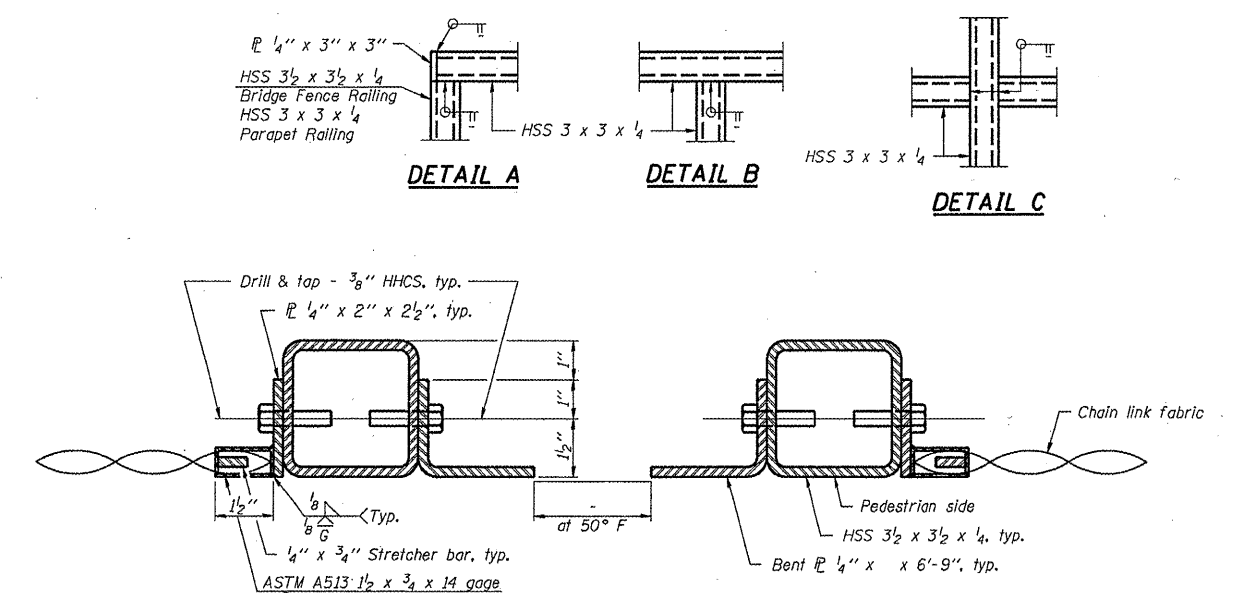
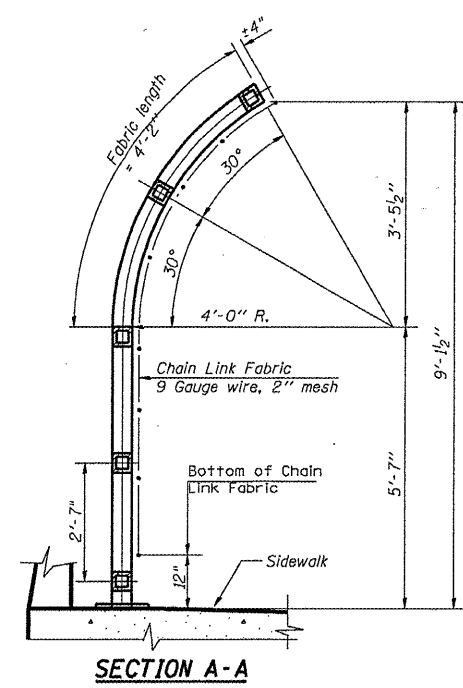
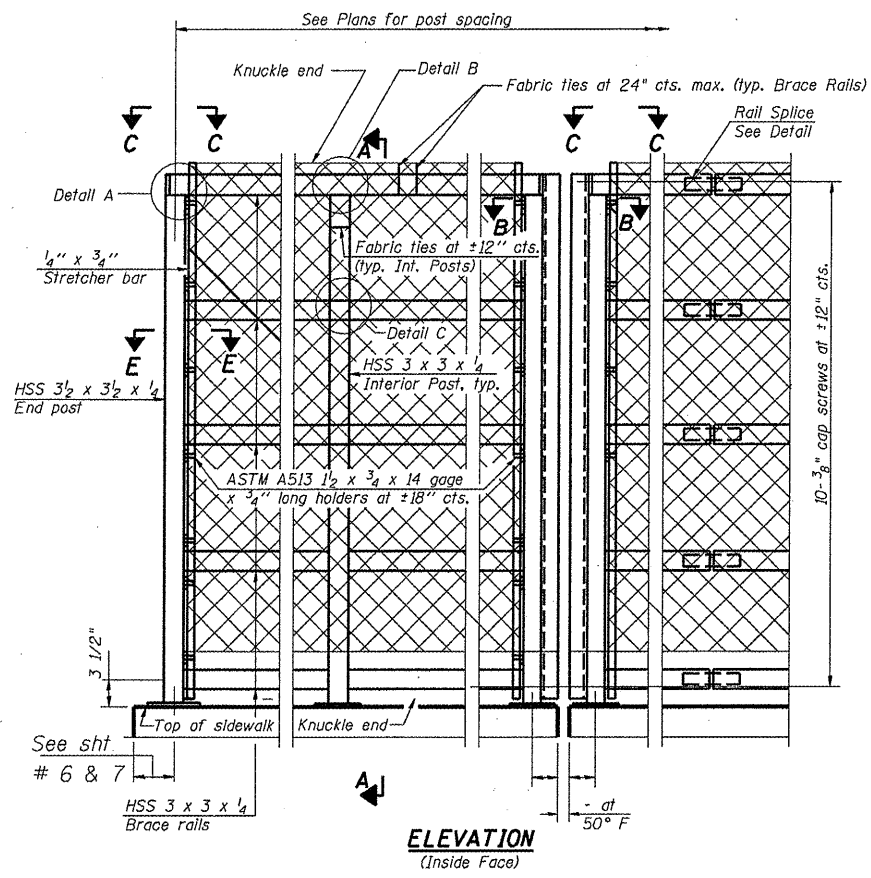
EXISTING SECTION THRU SIDEWALK



FENCE ELEVATION

ILLINOIS DEPARTMENT OF
TRANSPORTATION

IL 59 (NELTNOR BLVD)
BRIDGE FENCE RAILING
SIDEWALK MOUNTED (SN 022-0036)



The Contractor shall use $\frac{5}{8}$ " diameter epoxy grouted anchors according to the Standard Specification 584.

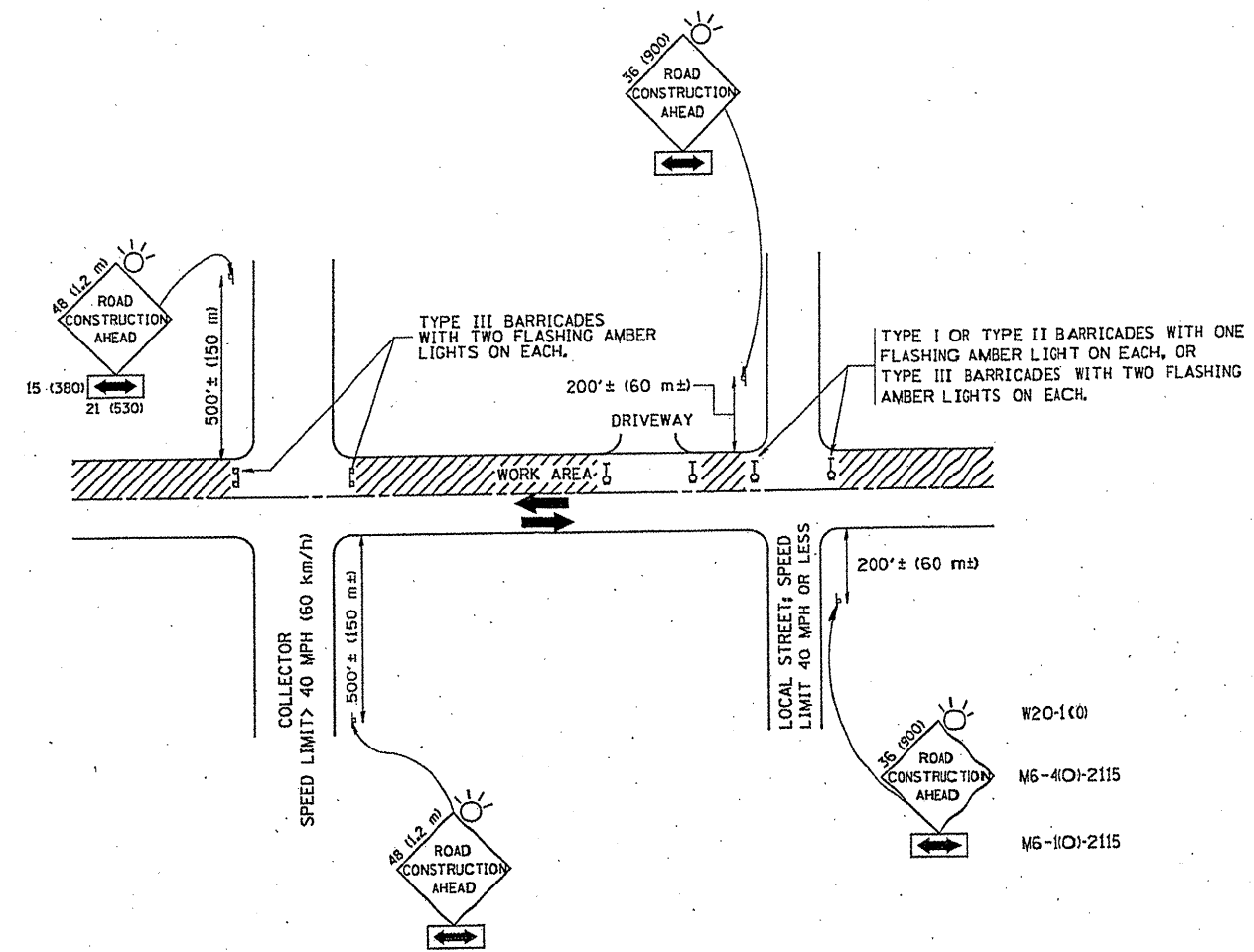
All steel rail elements shall be galvanized according to Article 509.05 of the Standard Specifications.

BILL OF MATERIAL

Item	Unit	Total Quantity	Loc. 2
Bridge Fence Railing (Sidewalk)	Foot	140	140

7-1-10 (10'-0" Maximum Post Spacing)

FILE NAME =	USER NAME = gorengoutab	DESIGNED -	REVISED -	STATE OF ILLINOIS DEPARTMENT OF TRANSPORTATION	BRIDGE FENCE RAILING, SIDEWALK MOUNTED (MODIFIED) STRUCTURE NO. 022-0036	F.A.P. RTE.	SECTION	COUNTY	TOTAL SHEETS	SHEET NO.	
es:\pwwork\pwwork\gorengoutab\d0220706	D164110-shr-plem.dgn	DRAWN -	REVISED -			358	2010-123-1	DUPAGE	11	9	
	PLOT SCALE = 1/8" = 1' IN.	CHECKED -	REVISED -			CONTRACT NO. 60M60					
	PLOT DATE = 12/8/2010	DATE -	REVISED -			ILLINOIS FED. AID PROJECT					



TRAFFIC CONTROL AND PROTECTION FOR SIDE ROADS, INTERSECTIONS, AND DRIVEWAYS

NOTES:

A. FOR NO LANE RESTRICTION ON THE SIDE ROAD OR DRIVEWAYS

1. SIDE ROAD WITH A SPEED LIMIT OF 40 MPH (60 km/h) OR LESS AS SHOWN ON THE DRAWING AND AS DIRECTED BY THE ENGINEER:
 - a) ONE ROAD CONSTRUCTION AHEAD SIGN 36 x 36 (900x900) WITH A FLASHER AND FLAG MOUNTED ON IT APPROXIMATELY 200' (60 m) IN ADVANCE OF THE MAIN ROUTE.
 - b) THE CLOSED PORTION OF THE MAIN ROUTE SHALL BE PROTECTED BY BLOCKING WITH TYPE I, TYPE II OR TYPE III BARRICADES, 1/3 OF THE CROSS SECTION OF THE CLOSED PORTION.
2. SIDE ROAD WITH A SPEED LIMIT GREATER THAN 40 MPH (60 km/h) AS SHOWN ON THE DRAWING AND AS DIRECTED BY THE ENGINEER:
 - a) ONE ROAD CONSTRUCTION AHEAD SIGN 48 x 48 (1.2 m x 1.2 m) WITH A FLASHER MOUNTED ON IT APPROXIMATELY 500' (150 m) IN ADVANCE OF THE MAIN ROUTE.
 - b) THE CLOSED PORTION OF THE MAIN ROUTE SHALL BE PROTECTED BY BLOCKING WITH TYPE III BARRICADES, 1/2 OF THE CROSS SECTION OF THE CLOSED PORTION.
3. WHEN THE SIDE ROAD LIES BETWEEN THE BEGINNING OF THE MAINLINE SIGNING AND THE WORK ZONE, A SINGLE HEADED ARROW (M6-1) SHALL BE USED IN LIEU OF THE DOUBLE HEADED ARROW (M6-4).

B. FOR A LANE CLOSURE ON A SIDE ROAD OR DRIVEWAY:

USE APPLICABLE PORTIONS OF THE TYPICAL APPLICATION OF TRAFFIC CONTROL DEVICES (STD. 70150L, STD. 701606 OR THE APPROPRIATE STANDARD). THE SPACING OF SIGNS AND BARRICADES SHALL BE ADJUSTED FOR FIELD CONDITIONS AS DIRECTED BY THE ENGINEER. THE DIRECTIONAL ARROW SHALL BE COVERED OR REMOVED WHEN NO LONGER CONSISTENT WITH THE SIDE ROAD LANE CLOSURE.

C. ADVANCE WARNING SIGNS ARE TO BE OMITTED ON DRIVEWAY UNLESS OTHERWISE NOTED.

D. THE TRAFFIC CONTROL AND PROTECTION FOR SIDE ROADS, INTERSECTIONS, AND DRIVEWAYS SHALL BE INCIDENTAL TO THE COST OF SPECIFIED TRAFFIC CONTROL STANDARDS OR ITEMS.

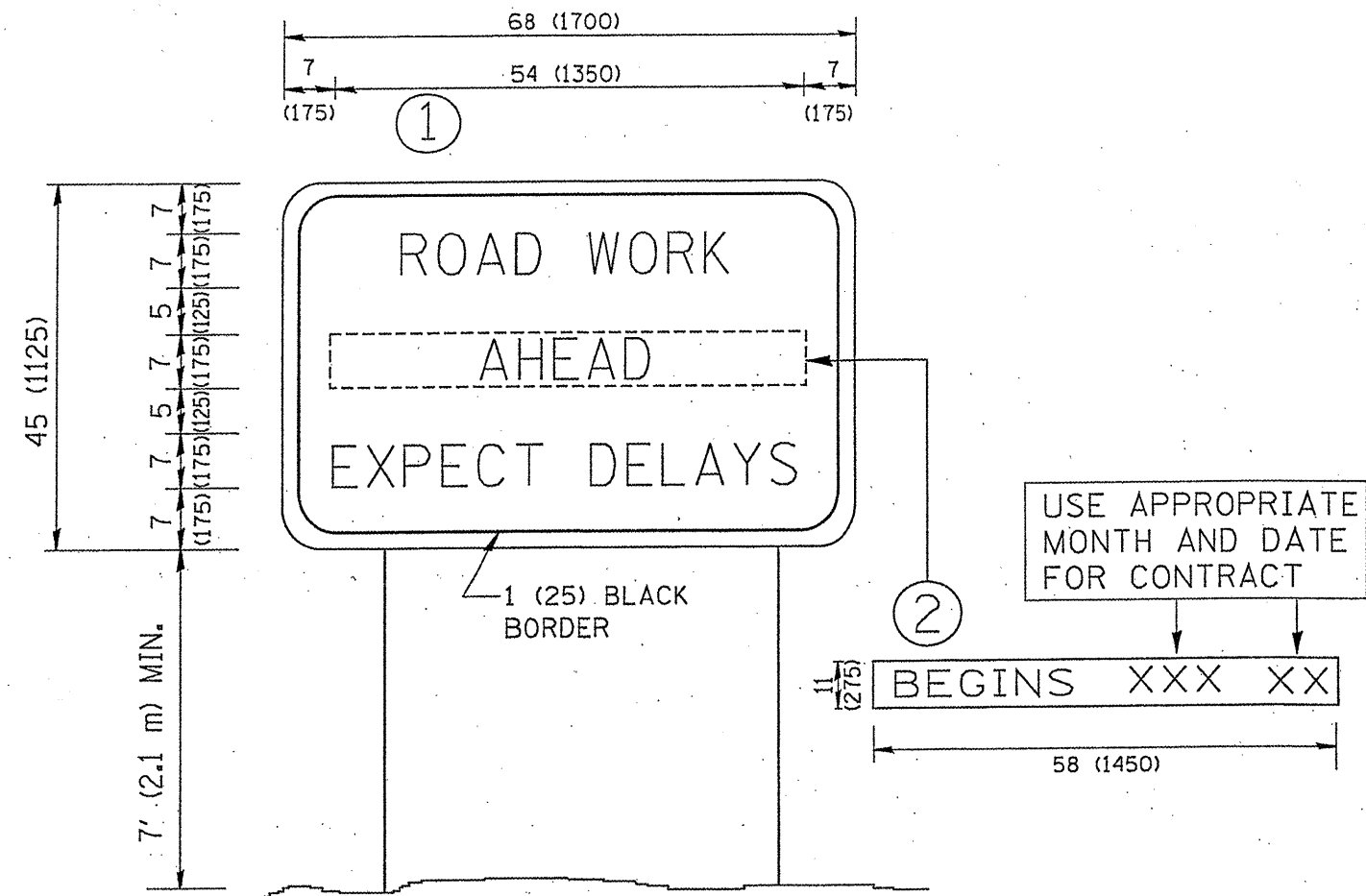
All dimensions are in millimeters (inches) unless otherwise shown.

FILE NAME =	USER NAME = geglornobt	DESIGNED - LHA	REVISED - J. OBERLE 10-18-95
W:\diststd\22x34\1010.dgn		DRAWN -	REVISED - A. HOUSEH 03-06-96
		CHECKED -	REVISED - A. HOUSEH 10-15-96
		DATE - 06-89	REVISED - T. RAMMACHER 01-06-00

STATE OF ILLINOIS
DEPARTMENT OF TRANSPORTATION

TRAFFIC CONTROL AND PROTECTION FOR SIDE ROADS, INTERSECTIONS, AND DRIVEWAYS			
SCALE: NONE	SHEET NO. 1 OF 1 SHEETS	STA.	TO STA.

F.A.R. RTE.	SECTION	COUNTY	TOTAL SHEETS	SHEET NO.
338	2010-123-1	DuPage	14	10
TC-10			CONTRACT NO. 60 M60	
FED. ROAD DIST. NO. 1 ILLINOIS FED. AID PROJECT				



NOTES:

1. USE BLACK LETTERING ON ORANGE BACKGROUND.
2. ERECT SIGNS IN ADVANCE OF THE LOCATION FOR THE "ROAD CONSTRUCTION AHEAD" SIGN AT LOCATIONS AS DIRECTED BY THE ENGINEER.
3. ERECT SIGN ① WITH INSTALLED PANEL ② ONE WEEK PRIOR TO THE START OF CONSTRUCTION.
4. REMOVE PANEL ② SOON AFTER THE START OF CONSTRUCTION.
5. SEE SPECIAL PROVISION FOR "TEMPORARY INFORMATION SIGNING" FOR ADDITIONAL INFORMATION.
6. ONE SIGN ASSEMBLY EQUALS 25.70 SQ. FT. (2.3 SQ. M.)
7. SHALL BE PAID FOR AS TEMPORARY INFORMATION SIGNING.

ALL DIMENSIONS ARE IN INCHES (MILLIMETERS) UNLESS OTHERWISE SHOWN.

FILE NAME = W:\disto\22x34\to22.dgn	USER NAME = goglionobt	DESIGNED -	REVISED - R. MIRS 09-15-97
		DRAWN -	REVISED - R. MIRS 12-11-97
		CHECKED -	REVISED - T. RAMMACHER 02-02-99
		DATE -	REVISED - C. JUCIUS 01-31-07

**STATE OF ILLINOIS
DEPARTMENT OF TRANSPORTATION**

ARTERIAL ROAD INFORMATION SIGN	
SCALE: NONE	SHEET NO. 1 OF 1 SHEETS STA. TO STA.

F.A. # 338	SECTION 2010-123-1	COUNTY DuPage	TOTAL SHEETS 17	SHEET NO. 17
TC-22			CONTRACT NO. 6DM60	
FED. ROAD DIST. NO. 1 ILLINOIS FED. AID PROJECT				