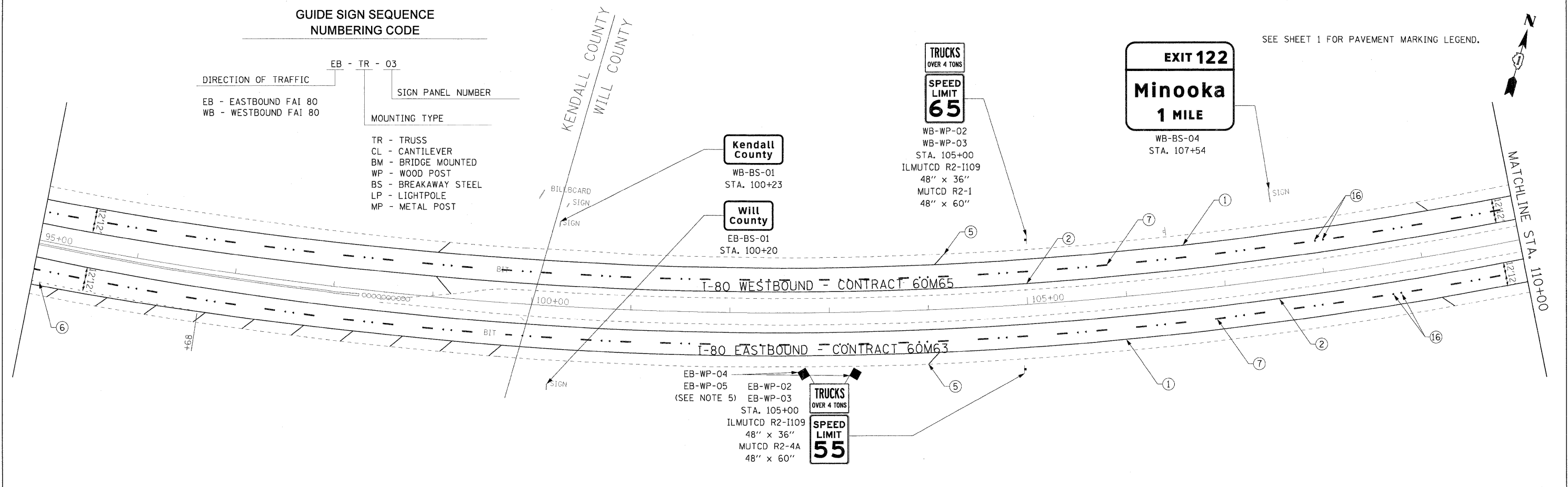


**GUIDE SIGN SEQUENCE
NUMBERING CODE**

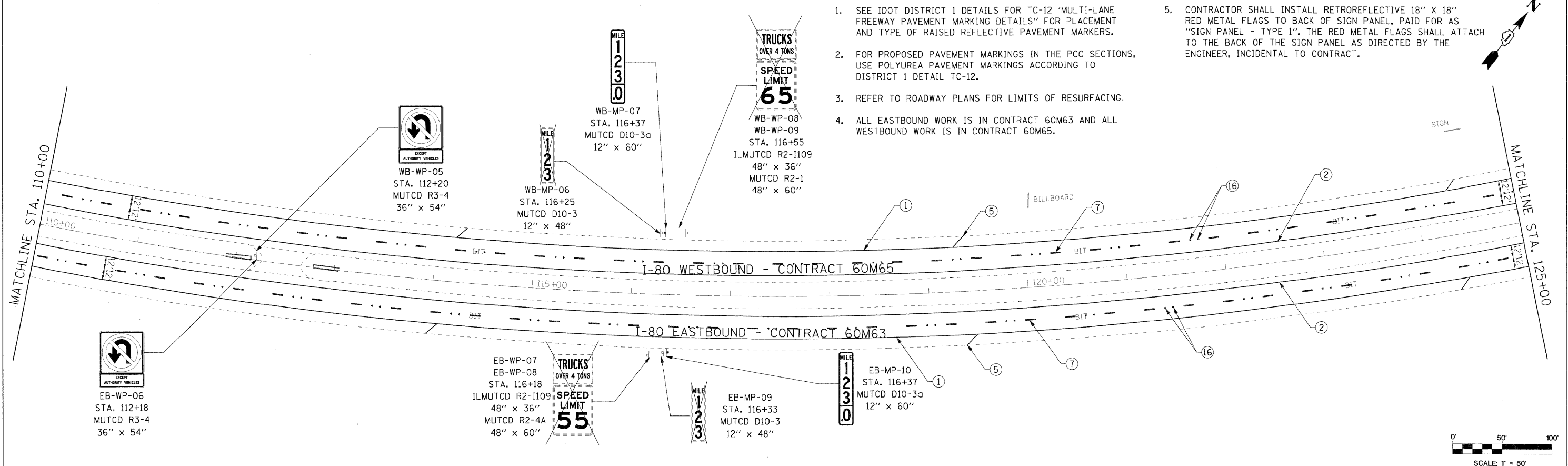
DIRECTION OF TRAFFIC	EB - TR - 03	SIGN PANEL NUMBER
	WB - TR - 03	
EB - EASTBOUND FAI 80 WB - WESTBOUND FAI 80		
	MOUNTING TYPE	
	TR - TRUSS	
	CL - CANTILEVER	
	BM - BRIDGE MOUNTED	
	WP - WOOD POST	
	BS - BREAKAWAY STEEL	
	LP - LIGHTPOLE	
	MP - METAL POST	

SEE SHEET 1 FOR PAVEMENT MARKING LEGEND.



NOTES

- SEE IDOT DISTRICT 1 DETAILS FOR TC-12 'MULTI-LANE FREEWAY PAVEMENT MARKING DETAILS' FOR PLACEMENT AND TYPE OF RAISED REFLECTIVE PAVEMENT MARKERS.
- FOR PROPOSED PAVEMENT MARKINGS IN THE PCC SECTIONS, USE POLYUREA PAVEMENT MARKINGS ACCORDING TO DISTRICT 1 DETAIL TC-12.
- REFER TO ROADWAY PLANS FOR LIMITS OF RESURFACING.
- ALL EASTBOUND WORK IS IN CONTRACT 60M63 AND ALL WESTBOUND WORK IS IN CONTRACT 60M65.
- CONTRACTOR SHALL INSTALL RETROREFLECTIVE 18" X 18" RED METAL FLAGS TO BACK OF SIGN PANEL, PAID FOR AS 'SIGN PANEL - TYPE 1'. THE RED METAL FLAGS SHALL ATTACH TO THE BACK OF THE SIGN PANEL AS DIRECTED BY THE ENGINEER, INCIDENTAL TO CONTRACT.



USER NAME =	DESIGNED - LED	REVISED -
PLOT SCALE =	DRAWN - PAS	REVISED -
PLOT DATE =	CHECKED - DT	REVISED -
FILE NAME =	DATE - 1/21/2011	REVISED -



**STATE OF ILLINOIS
DEPARTMENT OF TRANSPORTATION**

**PAVEMENT MARKING AND SIGNING PLAN
I-80 MAINLINE**

SCALE: 1"=50' SHEET NO. 2 OF 18 SHEETS STA. 95+00 TO STA. 125+00

F.A.I. RTE.	SECTION	COUNTY	TOTAL SHEETS	SHEET NO.
80	99-1-RS-4	WILL	116	55
CONTRACT NO. 60M63			FED. ROAD DIST. NO. 1 [ILLINOIS] FED. AID PROJECT	