

**GUIDE SIGN SEQUENCE  
NUMBERING CODE**

DIRECTION OF TRAFFIC		SIGN PANEL NUMBER	
EB - EASTBOUND FAI 80	WB - WESTBOUND FAI 80	EB - TR - 03	
MOUNTING TYPE			
WP - WOOD POST	BS - BREAKAWAY STEEL	TR - TRUSS	CL - CANTILEVER
LP - LIGHTPOLE	MP - METAL POST	BM - BRIDGE MOUNTED	

**NOTES**

- SEE IDOT DISTRICT 1 DETAILS FOR TC-12 'MULTI-LANE FREEWAY PAVEMENT MARKING DETAILS' FOR PLACEMENT AND TYPE OF RAISED REFLECTIVE PAVEMENT MARKERS.
- FOR PROPOSED PAVEMENT MARKINGS IN THE PCC SECTIONS, USE POLYUREA PAVEMENT MARKINGS ACCORDING TO DISTRICT 1 DETAIL TC-12.
- REFER TO ROADWAY PLANS FOR LIMITS OF RESURFACING.
- ALL EASTBOUND WORK IS IN CONTRACT 60M63 AND ALL WESTBOUND WORK IS IN CONTRACT 60M65.

MATCHLINE STA. 185+00

MATCHLINE STA. 200+00

MILE 1245

WB-MP-13  
STA. 195+57  
MUTCD D10-3a  
12" x 60"

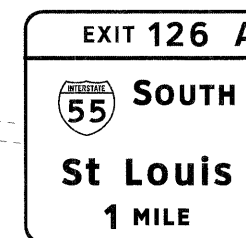
MILE 1245

EB-MP-15  
STA. 195+57  
MUTCD D10-3a  
12" x 60"

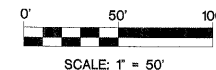
- |   |   |
|---|---|
| <ul style="list-style-type: none"> <li>① THERMOPLASTIC PAVEMENT MARKING - LINE 4" (WHITE EDGE LINE)</li> <li>② THERMOPLASTIC PAVEMENT MARKING - LINE 4" (YELLOW EDGE LINE)</li> <li>③ THERMOPLASTIC PAVEMENT MARKING - LINE 8" (WHITE EDGE LINE)</li> <li>④ THERMOPLASTIC PAVEMENT MARKING - LINE 12" (WHITE GORE CHEVRONS SPACED @ 30' CENTERS)</li> <li>⑤ THERMOPLASTIC PAVEMENT MARKING - LINE 12" (WHITE SHOULDER DIAGONALS SPACED @ 500' CENTERS)</li> <li>⑥ THERMOPLASTIC PAVEMENT MARKING - LINE 4" (WHITE 2' DASH, 6' SKIP)</li> <li>⑦ PREFORMED PLASTIC PAVEMENT MARKING, TYPE B - INLAID - LINE 5" (WHITE 10' DASH, 30' SKIP)</li> <li>⑧ POLYUREA PAVEMENT MARKING TYPE I - LINE 4" (WHITE EDGE LINE - P.C.C. PVT. ONLY)</li> <li>⑨ POLYUREA PAVEMENT MARKING TYPE I - LINE 4" (YELLOW EDGE LINE - P.C.C. PVT. ONLY)</li> <li>⑩ POLYUREA PAVEMENT MARKING TYPE I - LINE 4" (WHITE 2' DASH, 6' SKIP - P.C.C. PVT. ONLY)</li> <li>⑪ POLYUREA PAVEMENT MARKING TYPE I - LINE 5" (WHITE 10' DASH, 30' SKIP - P.C.C. PVT. ONLY)</li> </ul> | <ul style="list-style-type: none"> <li>⑫ POLYUREA PAVEMENT MARKING TYPE I - LINE 8" (WHITE EDGE LINE - P.C.C. PVT. ONLY)</li> <li>⑬ POLYUREA PAVEMENT MARKING TYPE I - LINE 12" (WHITE GORE CHEVRONS SPACED @ 30' CENTERS - P.C.C. PVT. ONLY)</li> <li>⑭ POLYUREA PAVEMENT MARKING TYPE I - LINE 12" (WHITE SHOULDER DIAGONALS SPACED @ 500' CENTERS (40' AT BRIDGES))</li> <li>⑮ RAISED REFLECTIVE PAVEMENT MARKER (1-WAY YELLOW / OPAQUE)</li> <li>⑯ RAISED REFLECTIVE PAVEMENT MARKER (1-WAY CRYSTAL / OPAQUE)</li> <li>⑰ RAISED REFLECTIVE PAVEMENT MARKER (BRIDGE)</li> <li>⑱ THERMOPLASTIC PAVEMENT MARKING - LETTERS AND SYMBOLS</li> <li>⑲ POLYUREA PAVEMENT MARKING TYPE I - LETTERS AND SYMBOLS</li> <li>⑳ PREFORMED PLASTIC PAVEMENT MARKING, TYPE B - INLAID - LINE 8" (WHITE 3' DASH, 9' SKIP)</li> <li>㉑ POLYUREA PAVEMENT MARKING TYPE I - LINE 8" (WHITE 3' DASH, 9' SKIP - P.C.C. PVT. ONLY)</li> <li>㉒ PREFORMED PLASTIC PAVEMENT MARKING, TYPE B - INLAID - LINE 8"</li> </ul> |
|---|---|

MATCHLINE STA. 200+00

MATCHLINE STA. 215+00



EB-CL-16  
STA. 214+54



USER NAME =	DESIGNED - LED	REVISED -
PLOT SCALE =	DRAWN - PAS	REVISED -
PLOT DATE =	CHECKED - DT	REVISED -
FILE NAME =	DATE - 1/21/2011	REVISED -



**STATE OF ILLINOIS  
DEPARTMENT OF TRANSPORTATION**

**PAVEMENT MARKING AND SIGNING PLAN  
I-80 MAINLINE**

SCALE: 1"=50' SHEET NO. 5 OF 18 SHEETS STA. 185+00 TO STA. 215+00

F.A.I. RTE.	SECTION	COUNTY	TOTAL SHEETS	SHEET NO.
80	99-1-RS-4	WILL	116	58
CONTRACT NO. 60M63			FED. ROAD DIST. NO. 1 [ILLINOIS] FED. AID PROJECT	