

Existing Structure: SN 099-0044

The existing structure SN 099-044 carrying I-80 eastbound over I-55 was originally constructed in 1960 as F.A.I. 80, Section HB-K-1. The structure consist of a 4 span continuous wide flange girders and reinforced concrete deck super structure supported by pile bent abutments and multi column piers. The bridge was repaired in 1980, 1993 and 1994.

Staging: Traffic shall be maintained using staged construction.

INDEX OF SHEETS

1. General Plan, Notes, Protective Shield Location & Total Bill of Material
2. Deck Repair Plan
3. Construction Staging
4. Temporary Concrete Barrier for Staged Construction

TOTAL BILL OF MATERIAL

ITEM	UNIT	SUPER	SUB	TOTAL
Concrete Sealer	Sq. Ft.	17000	-	17000
* Deck Slab Repair (Partial)	Sq. Yd.	20	-	20
Silicone Joint Sealer, 1"	Foot	106	-	106
Silicone Joint Sealer, 2.75"	Foot	106	-	106
Protective Shield	Sq. Yd.	394	-	394

** Work shall be performed in accordance with Special Provision Deck Slab Repair (Special)

SCOPE OF WORK

1. Deck Slab Repair (partial depth).
2. Remove and replace deck joints with silicone joint sealer.
3. Apply concrete sealer to bridge deck and the inside and the top horizontal faces of parapets.

DESIGN SPECIFICATIONS

2002 AASHTO Standard Specifications for Highway Bridges, 17th Edition

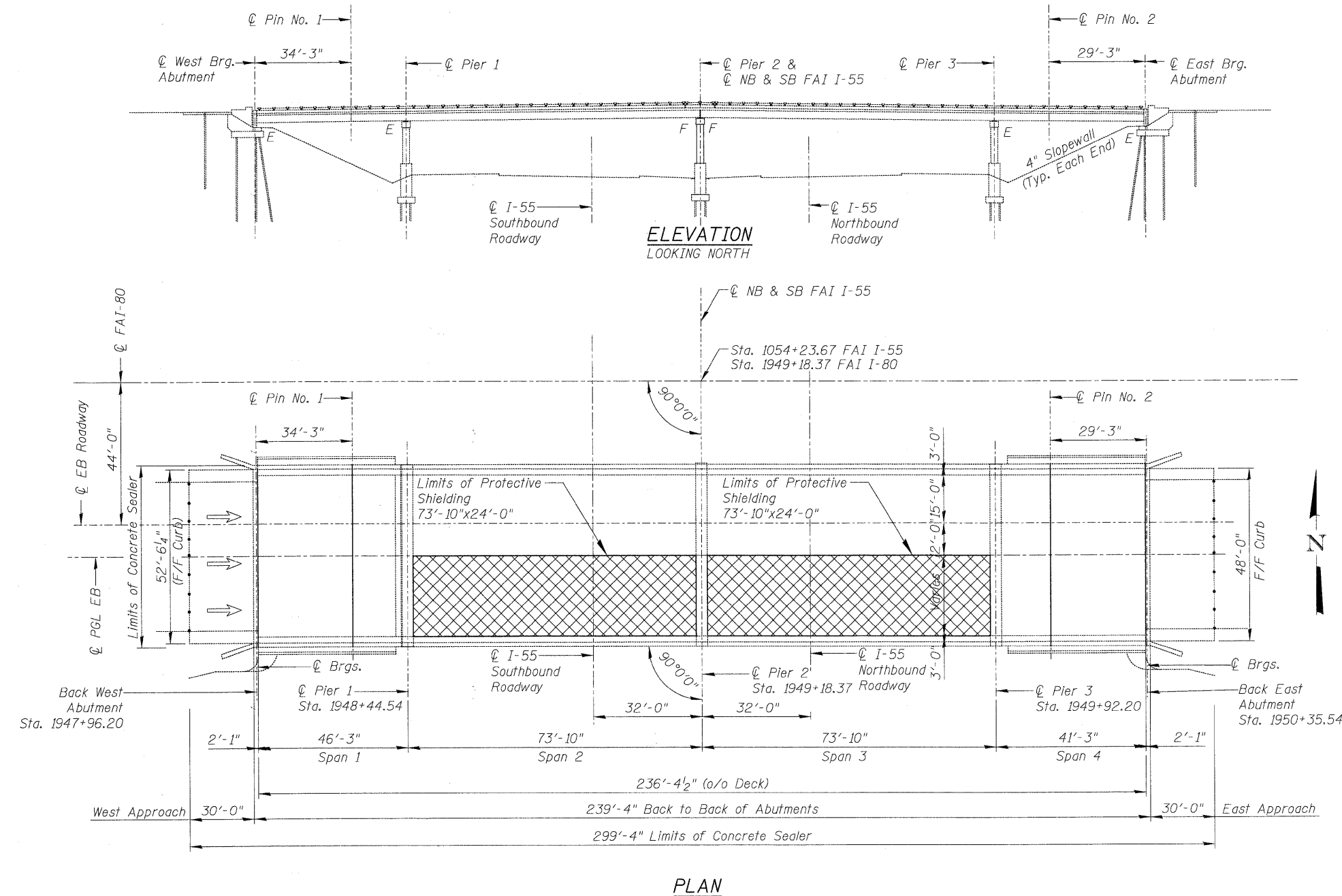
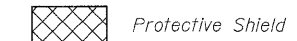
DESIGN STRESSES

f'c = 3,500 psi

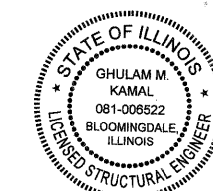
GENERAL NOTES

1. Concrete Sealer shall be applied to the bridge deck and the inside and the top horizontal faces of parapets. All surfaces to be sealed should be thoroughly cleaned prior to sealer application. Cost of cleaning is included with Concrete Sealer, see Special Provisions. Limits of Concrete Sealer extend from the east to the west approach pavements (including approach curbs) and from out to out of parapet.
2. Plan dimensions and details relative to existing plans are subject to nominal construction variations. The Contractor shall field verify existing dimensions and details affecting new construction and make necessary approved adjustments prior to construction or ordering of materials. Such variations shall not be cause for additional compensation for a change in scope of the work, however, the Contractor will be paid for the quantity actually furnished at the unit price bid for the work.
3. Areas of proposed deck repairs are estimated. Actual type, location and dimension of deck repairs are to be determined by the Engineer during construction.
4. Existing pavement markings shall be temporarily covered prior to application of the deck surface treatment, to prevent the material from being applied to the markings. The temporary covering shall be removed after application of the deck treatment and prior to opening to traffic. Cost included with Concrete Sealer.
5. All traffic control, devices, barricades, lane closures, temporary pavement markings, etc. along the cross roads within the contract limits, unless otherwise specified in the traffic control plans, shall not be paid for separately, but shall be included in the lump sum price for "Traffic Control and Protection (Expressways)". The Contractor shall use the appropriate IDOT or District One standard and obtain approval from the Engineer.

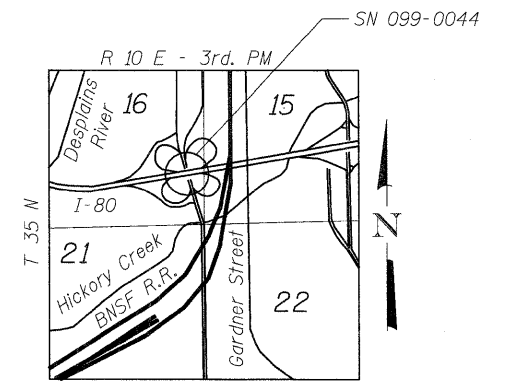
LEGEND:



PLAN



Signed: *[Signature]*
 Date: 01/20/2011
 Exp: 11/30/2012
 Sheets: 85-08



LOCATION SKETCH

USER NAME =	DESIGNED - GMK	REVISED -	DBS STERLIN CONSULTANTS, INC. 120 N. WACKER DRIVE SUITE 2000 CHICAGO, ILLINOIS 60606 TEL. (312)267-1000 FAX. (312)267-1095	STATE OF ILLINOIS DEPARTMENT OF TRANSPORTATION	GENERAL PLAN, NOTES & TOTAL BILL OF MATERIAL I-80 OVER I-55 SN-099-0044	F.A.I. RTE. = 80	SECTION = 99-1-RS-4	COUNTY = WILL	TOTAL SHEETS = 116	SHEET NO. = 85			
PLOT SCALE =	DRAWN - GFP	REVISED -				SHEET NO. S-1 OF S-4 SHEETS			CONTRACT NO. 60M63				
PLOT DATE =	CHECKED - WPK/GMK	REVISED -				FED. ROAD DIST. NO. 1 [ILLINOIS] FED. AID PROJECT							
FILE NAME =	DATE - 01/19/2011	REVISED -											