

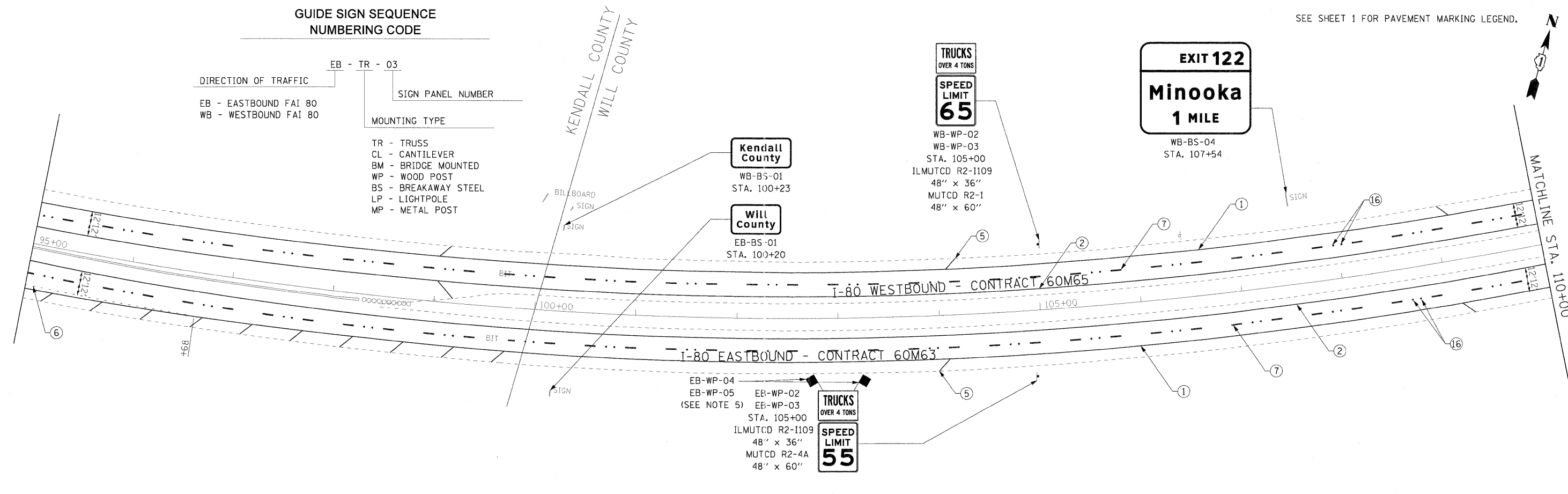
GUIDE SIGN SEQUENCE  
NUMBERING CODE

DIRECTION OF TRAFFIC  
EB - EASTBOUND FAI 80  
WB - WESTBOUND FAI 80

EB - TR - 03  
SIGN PANEL NUMBER

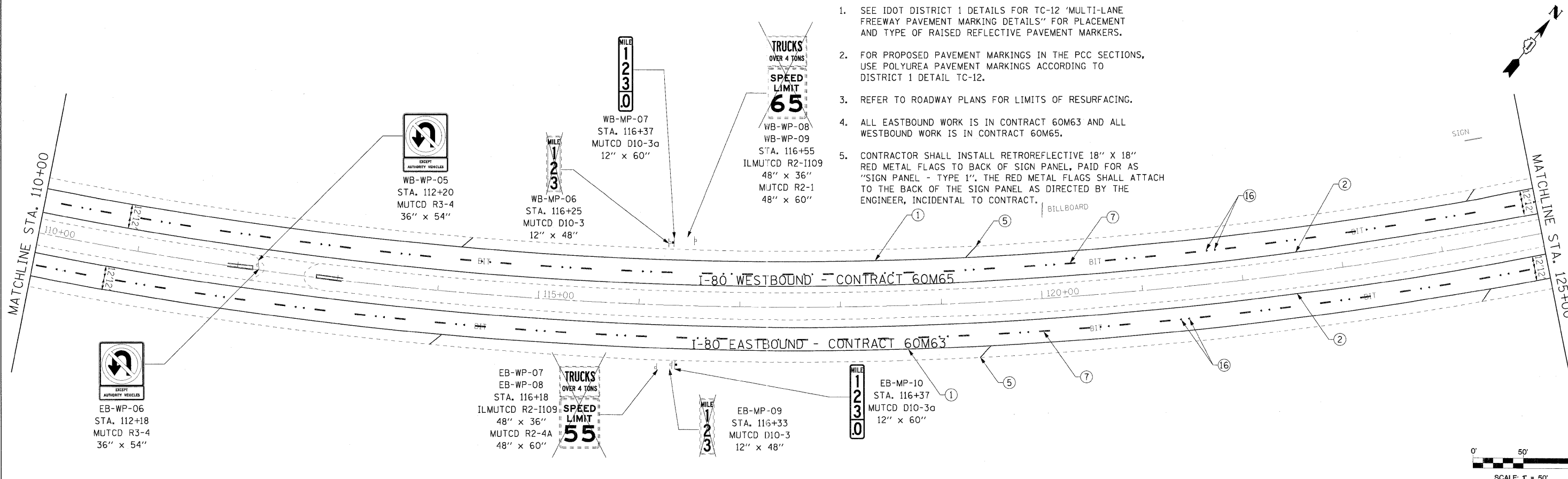
MOUNTING TYPE  
TR - TRUSS  
CL - CANTILEVER  
BM - BRIDGE MOUNTED  
WP - WOOD POST  
BS - BREAKAWAY STEEL  
LP - LIGHTPOLE  
MP - METAL POST

SEE SHEET 1 FOR PAVEMENT MARKING LEGEND.



NOTES

- SEE IDOT DISTRICT 1 DETAILS FOR TC-12 'MULTI-LANE FREEWAY PAVEMENT MARKING DETAILS' FOR PLACEMENT AND TYPE OF RAISED REFLECTIVE PAVEMENT MARKERS.
- FOR PROPOSED PAVEMENT MARKINGS IN THE PCC SECTIONS, USE POLYUREA PAVEMENT MARKINGS ACCORDING TO DISTRICT 1 DETAIL TC-12.
- REFER TO ROADWAY PLANS FOR LIMITS OF RESURFACING.
- ALL EASTBOUND WORK IS IN CONTRACT 60M63 AND ALL WESTBOUND WORK IS IN CONTRACT 60M65.
- CONTRACTOR SHALL INSTALL RETROREFLECTIVE 18" X 18" RED METAL FLAGS TO BACK OF SIGN PANEL, PAID FOR AS "SIGN PANEL - TYPE 1". THE RED METAL FLAGS SHALL ATTACH TO THE BACK OF THE SIGN PANEL AS DIRECTED BY THE ENGINEER, INCIDENTAL TO CONTRACT.



USER NAME =	DESIGNED - LED	REVISED -
PLOT SCALE = #SCALE*	DRAWN - PAS	REVISED -
PLOT DATE = 1/18/2011	CHECKED - DT	REVISED -
FILE NAME = ...D16RM65 sht.pnk-sign-002	DATE - 1/19/2011	REVISED -



STATE OF ILLINOIS  
DEPARTMENT OF TRANSPORTATION

PAVEMENT MARKING AND SIGNING PLAN  
I-80 MAINLINE

SCALE: 1"=50' SHEET NO. 2 OF 18 SHEETS STA. 95+00 TO STA. 125+00

F.A.I. RTE.	SECTION	COUNTY	TOTAL SHEETS	SHEET NO.
80	99 (3&4) RS-4	WILL	117	55
CONTRACT NO. 60M65				
FED. ROAD DIST. NO. 1 [ILLINOIS] FED. AID PROJECT				