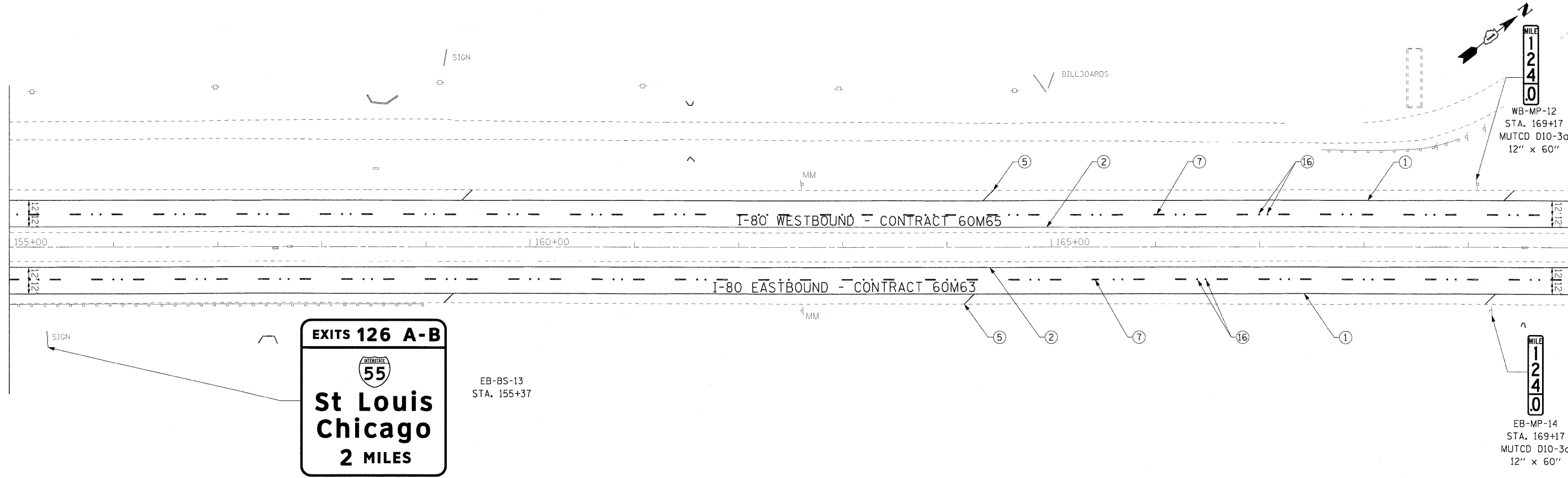


MATCHLINE STA. 155+00

MATCHLINE STA. 170+00



EB-BS-13
STA. 155+37

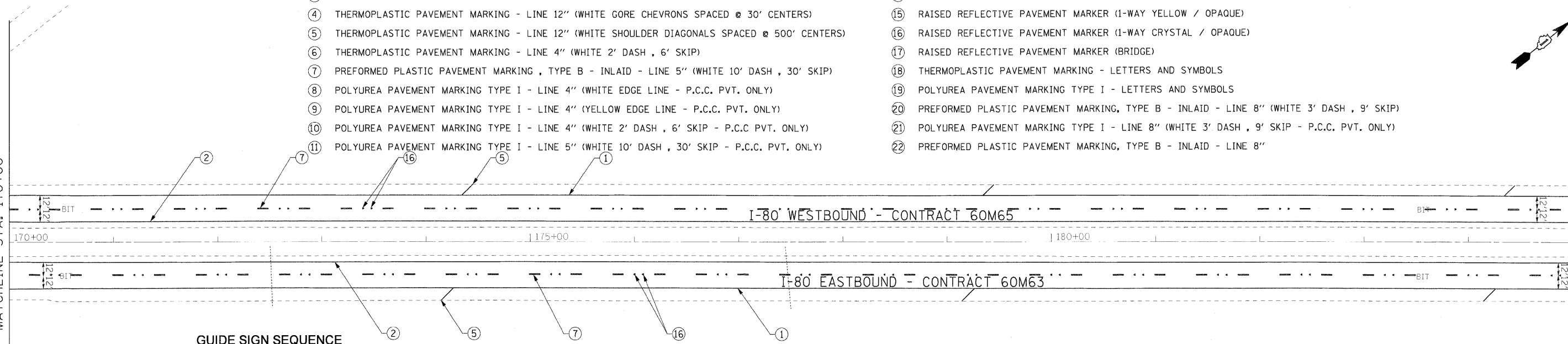
EB-MP-14
STA. 169+17
MUTCD D10-3c
12" x 60"

- ① THERMOPLASTIC PAVEMENT MARKING - LINE 4" (WHITE EDGE LINE)
- ② THERMOPLASTIC PAVEMENT MARKING - LINE 4" (YELLOW EDGE LINE)
- ③ THERMOPLASTIC PAVEMENT MARKING - LINE 8" (WHITE EDGE LINE)
- ④ THERMOPLASTIC PAVEMENT MARKING - LINE 12" (WHITE GORE CHEVRONS SPACED @ 30' CENTERS)
- ⑤ THERMOPLASTIC PAVEMENT MARKING - LINE 12" (WHITE SHOULDER DIAGONALS SPACED @ 500' CENTERS)
- ⑥ THERMOPLASTIC PAVEMENT MARKING - LINE 4" (WHITE 2' DASH , 6' SKIP)
- ⑦ PREFORMED PLASTIC PAVEMENT MARKING , TYPE B - INLAID - LINE 5" (WHITE 10' DASH , 30' SKIP)
- ⑧ POLYUREA PAVEMENT MARKING TYPE I - LINE 4" (WHITE EDGE LINE - P.C.C. PVT. ONLY)
- ⑨ POLYUREA PAVEMENT MARKING TYPE I - LINE 4" (YELLOW EDGE LINE - P.C.C. PVT. ONLY)
- ⑩ POLYUREA PAVEMENT MARKING TYPE I - LINE 4" (WHITE 2' DASH , 6' SKIP - P.C.C PVT. ONLY)
- ⑪ POLYUREA PAVEMENT MARKING TYPE I - LINE 5" (WHITE 10' DASH , 30' SKIP - P.C.C. PVT. ONLY)

- ⑫ POLYUREA PAVEMENT MARKING TYPE I - LINE 8" (WHITE EDGE LINE - P.C.C. PVT. ONLY)
- ⑬ POLYUREA PAVEMENT MARKING TYPE I - LINE 12" (WHITE GORE CHEVRONS SPACED @ 30' CENTERS - P.C.C. PVT. ONLY)
- ⑭ POLYUREA PAVEMENT MARKING TYPE I - LINE 12" (WHITE SHOULDER DIAGONALS SPACED @ 500' CENTERS (40' AT BRIDGES))
- ⑮ RAISED REFLECTIVE PAVEMENT MARKER (1-WAY YELLOW / OPAQUE)
- ⑯ RAISED REFLECTIVE PAVEMENT MARKER (1-WAY CRYSTAL / OPAQUE)
- ⑰ RAISED REFLECTIVE PAVEMENT MARKER (BRIDGE)
- ⑱ THERMOPLASTIC PAVEMENT MARKING - LETTERS AND SYMBOLS
- ⑲ POLYUREA PAVEMENT MARKING TYPE I - LETTERS AND SYMBOLS
- ⑳ PREFORMED PLASTIC PAVEMENT MARKING, TYPE B - INLAID - LINE 8" (WHITE 3' DASH , 9' SKIP)
- ㉑ POLYUREA PAVEMENT MARKING TYPE I - LINE 8" (WHITE 3' DASH , 9' SKIP - P.C.C. PVT. ONLY)
- ㉒ PREFORMED PLASTIC PAVEMENT MARKING, TYPE B - INLAID - LINE 8"

MATCHLINE STA. 170+00

MATCHLINE STA. 185+00

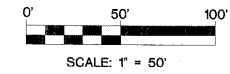


GUIDE SIGN SEQUENCE NUMBERING CODE

DIRECTION OF TRAFFIC		SIGN PANEL NUMBER	
EB - EASTBOUND FAI 80	WB - WESTBOUND FAI 80	EB - TR - 03	
MOUNTING TYPE			
WP - WOOD POST	BS - BREAKAWAY STEEL	TR - TRUSS	CL - CANTILEVER
LP - LIGHTPOLE	MP - METAL POST	BM - BRIDGE MOUNTED	

NOTES

- SEE IDOT DISTRICT 1 DETAILS FOR TC-12 'MULTI-LANE FREEWAY PAVEMENT MARKING DETAILS' FOR PLACEMENT AND TYPE OF RAISED REFLECTIVE PAVEMENT MARKERS.
- FOR PROPOSED PAVEMENT MARKINGS IN THE PCC SECTIONS, USE POLYUREA PAVEMENT MARKINGS ACCORDING TO DISTRICT 1 DETAIL TC-12.
- REFER TO ROADWAY PLANS FOR LIMITS OF RESURFACING.
- ALL EASTBOUND WORK IS IN CONTRACT 60M63 AND ALL WESTBOUND WORK IS IN CONTRACT 60M65.



USER NAME #	DESIGNED - LED	REVISIONS -		STATE OF ILLINOIS DEPARTMENT OF TRANSPORTATION	PAVEMENT MARKING AND SIGNING PLAN I-80 MAINLINE	F.A.I. RTE.	SECTION	COUNTY	TOTAL SHEETS	SHEET NO.
PLOT SCALE = #SCALE#	DRAWN - PAS	REVISIONS -				80	99 (3&4) RS-4	WILL	117	57
PLOT DATE = 1/18/2011	CHECKED - DT	REVISIONS -	SCALE: 1"=50' SHEET NO. 4 OF 18 SHEETS STA. 155+00 TO STA. 185+00			CONTRACT NO. 60M65				
FILE NAME = ...N0108M65-shk-pmk+sign-004	DATE - 1/19/2011	REVISIONS -	FED. ROAD DIST. NO. 1 ILLINOIS FED. AID PROJECT							