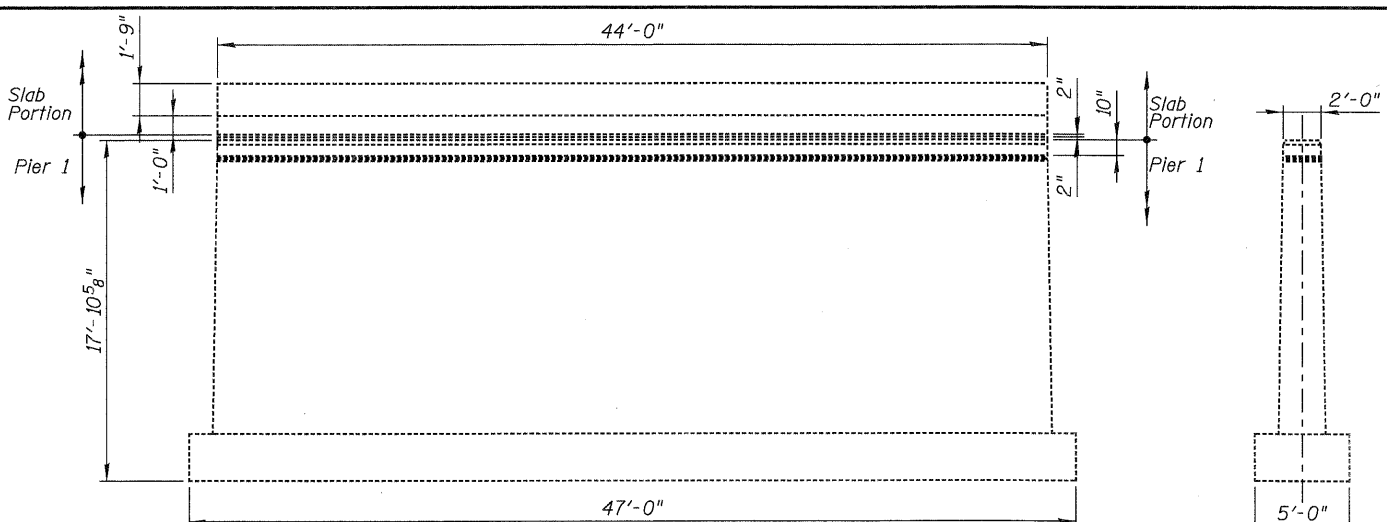


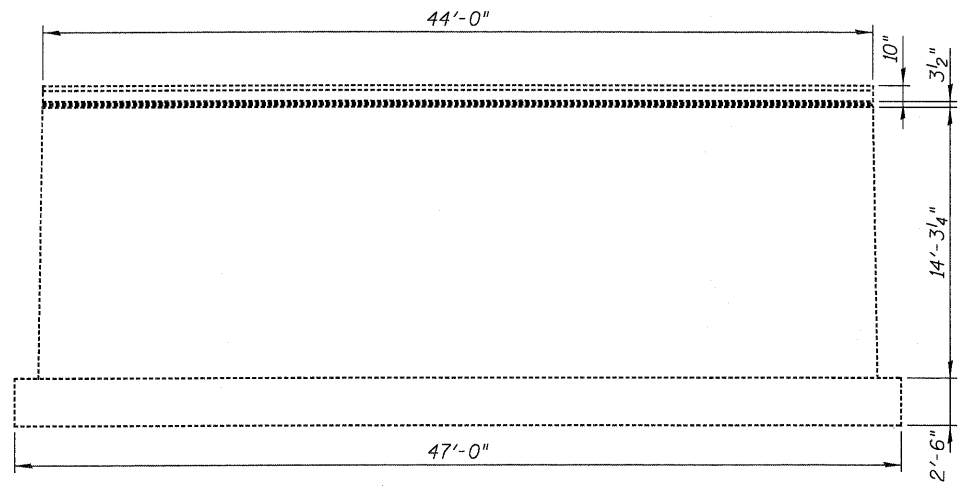
PIER 1 - WEST ELEVATION
(Looking East)

PIER 1 - END VIEW
(Looking North)



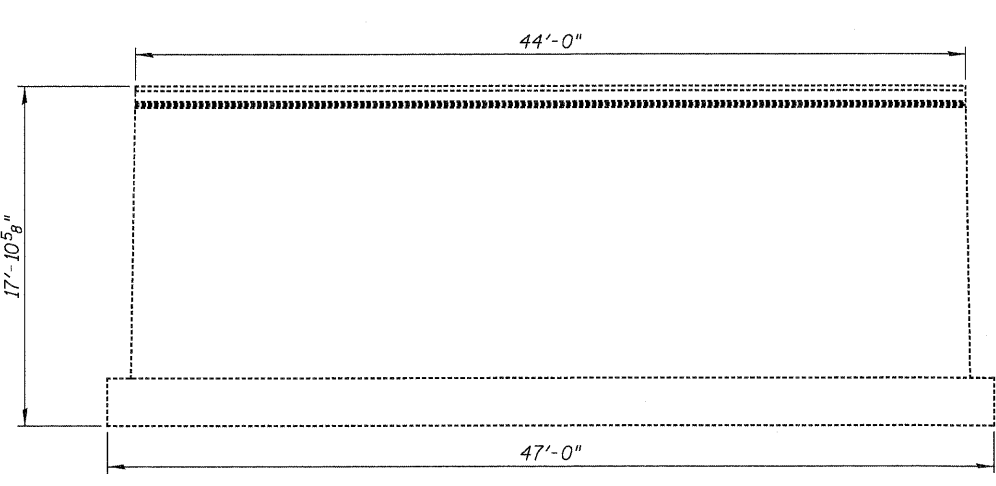
PIER 1 - EAST ELEVATION
(Looking West)

PIER 1 - END VIEW
(Looking South)



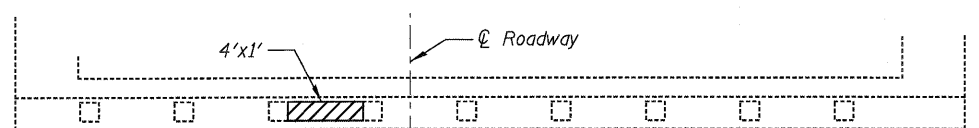
PIER 2 - WEST ELEVATION
(Looking East)

PIER 2 - END VIEW
(Looking North)

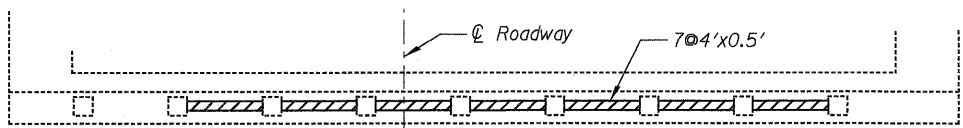


PIER 2 - EAST ELEVATION
(Looking West)

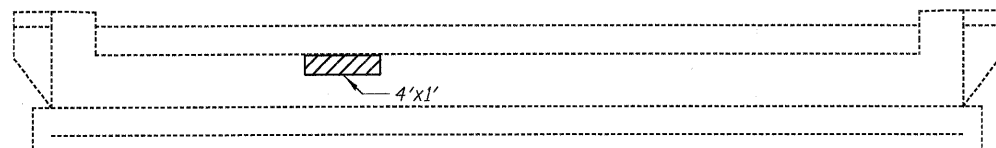
PIER 2 - END VIEW
(Looking South)



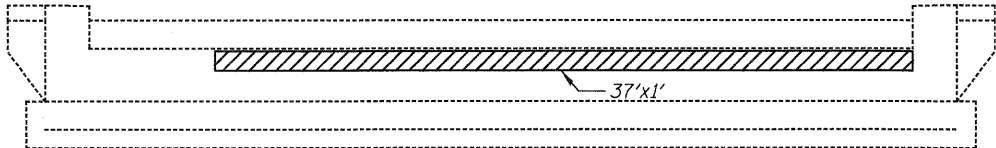
WEST ABUTMENT - PLAN



EAST ABUTMENT - ELEVATION
(Looking East)



WEST ABUTMENT - ELEVATION
(Looking West)



EAST ABUTMENT - ELEVATION
(Looking East)

NOTES

1. Contractor shall take precautions during removal operation and repair only one face of pier at a time.

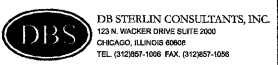
BILL OF MATERIAL

ITEM	UNIT	TOTAL
Structural Repair Of Concrete (Depth Equal To Or Less Than 5 Inches)	Sq.Ft.	115

LEGEND:

Structural Repair of Concrete (Depth = < 5")

USER NAME =	DESIGNED - GMK	REVISED -
PLOT SCALE =	DRAWN - GFP	REVISED -
PLOT DATE =	CHECKED - WPK/GMK	REVISED -
FILE NAME =	DATE - 01/18/2011	REVISED -



STATE OF ILLINOIS
DEPARTMENT OF TRANSPORTATION

ABUTMENT AND PIER REPAIR DETAILS
WESTBOUND I-80 OVER ROCK RUN CREEK
SN-099-0047

SHEET NO. S-4 OF S-6 SHEETS

F.A.I. RTE.:	SECTION	COUNTY	TOTAL SHEETS	SHEET NO.
80	99 (3&4) RS-4	WILL	117	92
CONTRACT NO. 60M65				
FED. ROAD DIST. NO. 1 ILLINOIS FED. AID PROJECT				