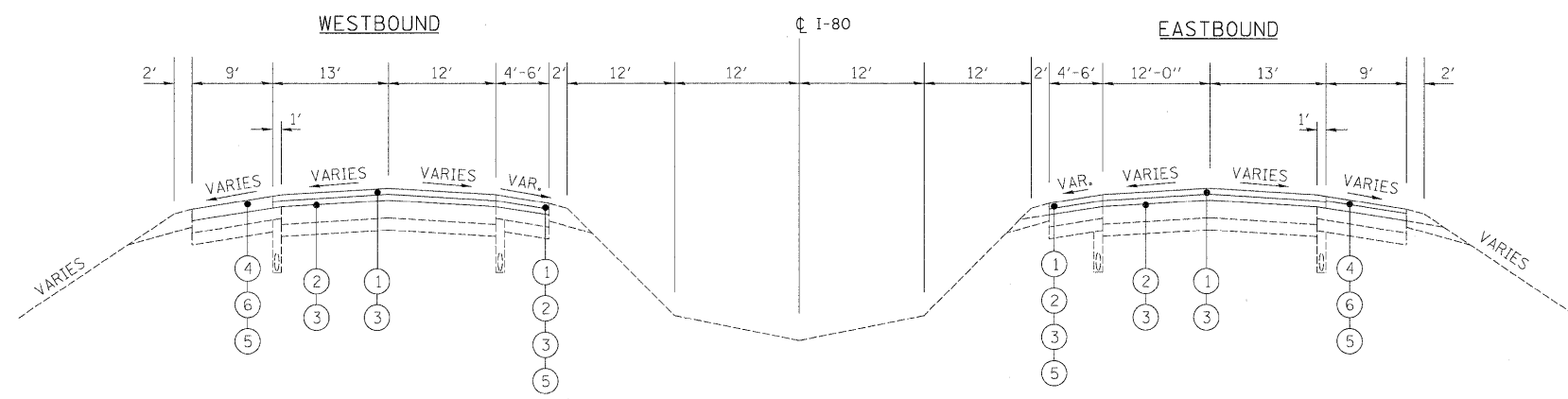
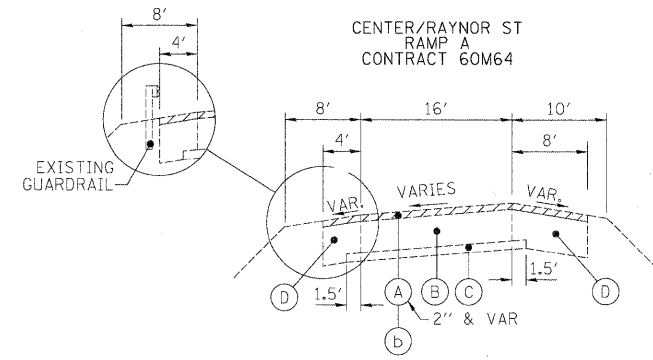


**EXISTING TYPICAL SECTION**

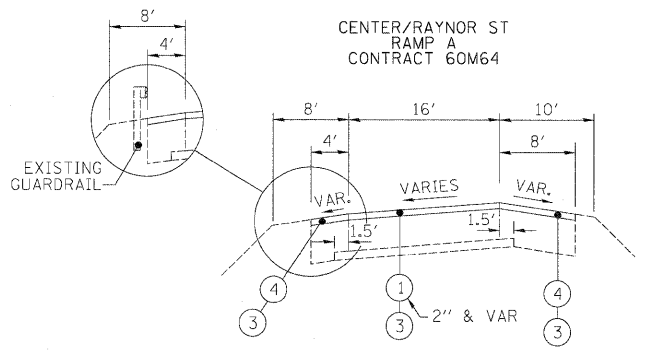
STA. 544+47.10 TO STA. 607+00 (WB)  
 STA. 544+48.53 TO STA. 607+00 (EB)  
 BRIDGE OMISSION  
 STA. 544+69.10 TO STA. 546+05.97 (WB)  
 STA. 544+68.63 TO STA. 546+04.22 (EB)  
 STA. 585+22.59 TO STA. 586+49.36 (WB)  
 STA. 584+94.76 TO STA. 586+24.09 (EB)  
 STA. 589+59.88 TO STA. 590+62.47 (WB)  
 STA. 589+89.84 TO STA. 591+07.82 (EB)  
 STA. 601+50.76 TO STA. 607+00 (WB)  
 STA. 601+37.85 TO STA. 607+00 (EB)

• STATION 544+48.53 TO STATION



**PROPOSED TYPICAL SECTION**

STA. 544+47.10 TO STA. 607+00 (WB)  
 STA. 544+48.53 TO STA. 607+00 (EB)  
 BRIDGE OMISSION  
 STA. 544+69.10 TO STA. 546+05.97 (WB)  
 STA. 544+68.63 TO STA. 546+04.22 (EB)  
 STA. 585+22.59 TO STA. 586+49.36 (WB)  
 STA. 584+94.76 TO STA. 586+24.09 (EB)  
 STA. 589+59.88 TO STA. 590+62.47 (WB)  
 STA. 589+89.84 TO STA. 591+07.82 (EB)  
 STA. 601+50.76 TO STA. 607+00 (WB)  
 STA. 601+37.85 TO STA. 607+00 (EB)



**EXISTING LEGEND**

- (A) SMA OVERLAY, 4"±
- (B) P.C.C. PAVEMENT, 10"±
- (C) SUB-BASE GRANULAR MATERIAL
- (D) HMA SHOULDER, 8"±
- (E) AGGREGATE SHOULDER
- (F) PIPE UNDERDRAIN
- (G) HOT MIX ASPHALT STABILIZATION (AT GUARDRAIL LOCATIONS)
- (H) C.R.C PAVEMENT, 9"±

**REMOVAL LEGEND**

- (a) HOT-MIX ASPHALT REMOVAL, 4"
- (b) HOT-MIX ASPHALT REMOVAL, 2"

**PROPOSED LEGEND**

- (1) POLYMERIZED HOT-MIX ASPHALT SURFACE COURSE  
STONE MATRIX ASPHALT, N80, 2"
- (2) POLYMERIZED HOT-MIX ASPHALT BINDER COURSE  
STONE MATRIX ASPHALT, N80, 2"
- (3) BITUMINOUS MATERIALS (PRIME COAT)
- (4) HOT-MIX ASPHALT SURFACE COURSE,  
MIX "D", N70, (IL 9.5mm), 1 1/2"
- (5) SHOULDER RUMBLE STRIP
- (6) HOT-MIX ASPHALT BINDER COURSE,  
IL-19.0, N70, 2 1/2"

**NOTES**

1. ALL PAVEMENT PATCHING SHALL BE PLACED AT LOCATIONS AS APPROVED BY THE ENGINEER. THE DEPTH OF THE PATCH SHALL BE EQUAL TO THE THICKNESS OF EXISTING PCC PAVEMENT AND SHALL NOT INCLUDE THE DEPTH OF THE HOT-MIX ASPHALT REMOVAL, 4".
2. THE CONTRACTOR SHALL MAINTAIN THE EXISTING CROSS SLOPES.
3. PAVEMENT UNDERDRAIN IS SHOWN FOR INFORMATION ONLY. DURING PAVEMENT PATCHING OPERATIONS, CARE SHOULD BE TAKEN TO MINIMIZE ANY DAMAGE TO THE UNDERDRAIN. ANY DAMAGE CAUSED TO THE UNDERDRAIN BY THE CONTRACTOR'S OPERATIONS SHALL BE REPAIRED BY THE CONTRACTOR AT THE CONTRACTOR'S EXPENSE.
4. ALL EASTBOUND WORK IS IN CONTRACT 60M64 AND ALL WESTBOUND WORK IS IN CONTRACT 60M66.

DESIGNED - JAM	REVISIONS		<b>STATE OF ILLINOIS</b> <b>DEPARTMENT OF TRANSPORTATION</b>	<b>TYPICAL SECTIONS</b> <b>I-80 MAINLINE</b>	F.A.I. RTE.	SECTION	COUNTY	TOTAL SHEETS	SHEET NO.
USER NAME = default	DRAWN - JAM				80	99(4&4-1)RS-3	WILL	203	5
PLOT SCALE = #SCALE#	CHECKED - RR				CONTRACT NO. 60M66				
PLOT DATE = 1/19/2011	DATE - 1/20/2011				FED. ROAD DIST. NO. ILLINOIS FED. AID PROJECT				
FILE NAME = c:\oad\lib\p\rr\rose\p\g\eat.lakes\dms34585\DI60M66-sh-t\typical(EAST).dgn		SCALE: 1"=50'	SHEET NO. 1 OF 7 SHEETS	STA. TO STA.					