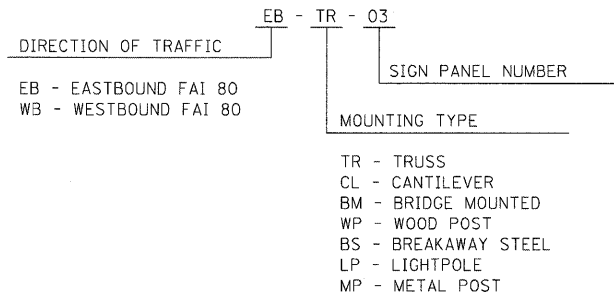


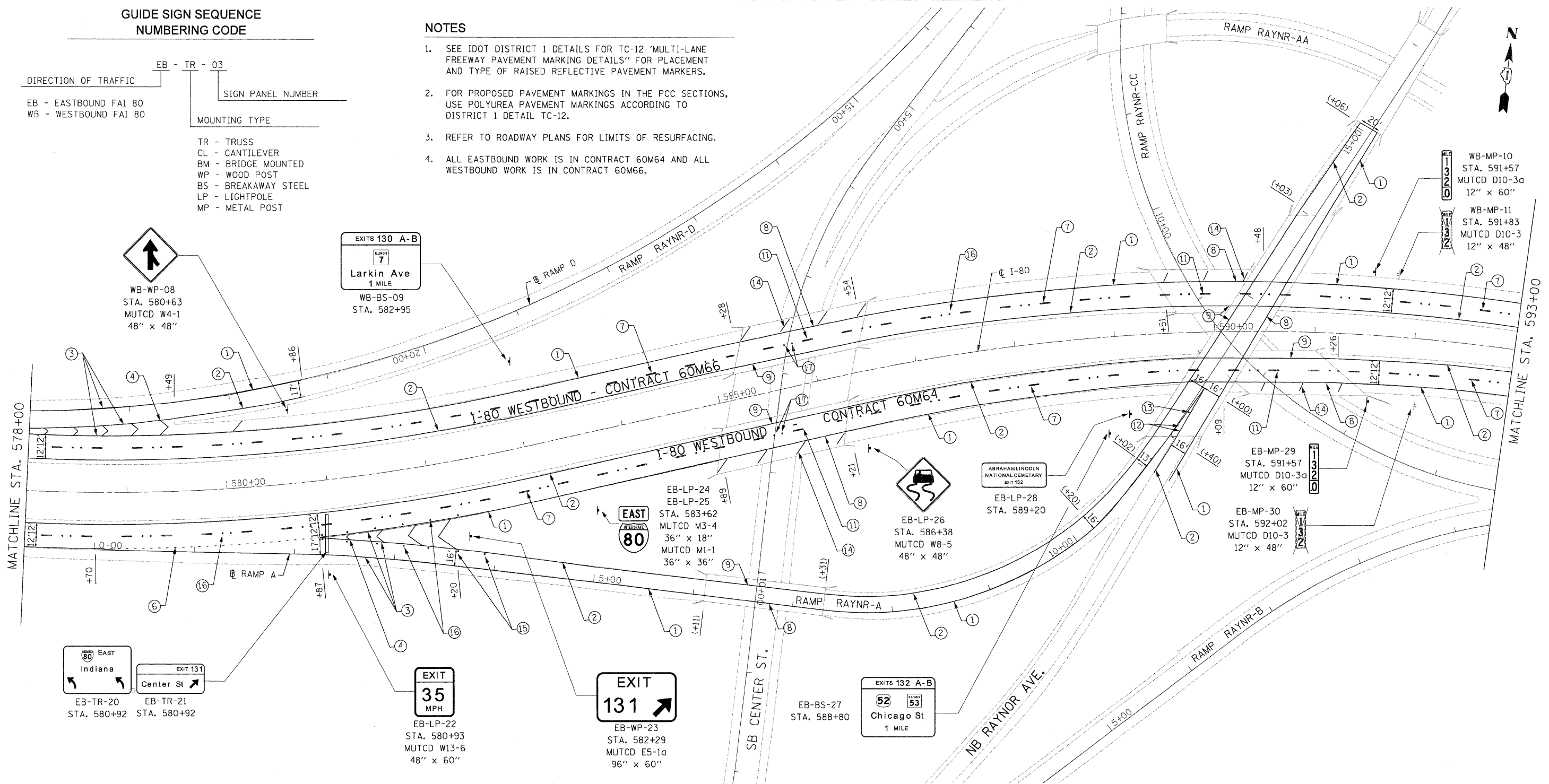
1/19/2011 11:24:48 AM

GUIDE SIGN SEQUENCE NUMBERING CODE



NOTES

- SEE IDOT DISTRICT 1 DETAILS FOR TC-12 "MULTI-LANE FREEWAY PAVEMENT MARKING DETAILS" FOR PLACEMENT AND TYPE OF RAISED REFLECTIVE PAVEMENT MARKERS.
- FOR PROPOSED PAVEMENT MARKINGS IN THE PCC SECTIONS, USE POLYUREA PAVEMENT MARKINGS ACCORDING TO DISTRICT 1 DETAIL TC-12.
- REFER TO ROADWAY PLANS FOR LIMITS OF RESURFACING.
- ALL EASTBOUND WORK IS IN CONTRACT 60M64 AND ALL WESTBOUND WORK IS IN CONTRACT 60M66.



- THERMOPLASTIC PAVEMENT MARKING - LINE 4" (WHITE EDGE LINE)
- THERMOPLASTIC PAVEMENT MARKING - LINE 4" (YELLOW EDGE LINE)
- THERMOPLASTIC PAVEMENT MARKING - LINE 8" (WHITE EDGE LINE)
- THERMOPLASTIC PAVEMENT MARKING - LINE 12" (WHITE GORE CHEVRONS SPACED @ 30' CENTERS)
- THERMOPLASTIC PAVEMENT MARKING - LINE 12" (WHITE SHOULDER DIAGONALS SPACED @ 500' CENTERS)
- THERMOPLASTIC PAVEMENT MARKING - LINE 4" (WHITE 2' DASH , 6' SKIP)
- PREFORMED PLASTIC PAVEMENT MARKING , TYPE B - INLAID - LINE 5" (WHITE 10' DASH , 30' SKIP)
- POLYUREA PAVEMENT MARKING TYPE I - LINE 4" (WHITE EDGE LINE - P.C.C. PVT. ONLY)
- POLYUREA PAVEMENT MARKING TYPE I - LINE 4" (YELLOW EDGE LINE - P.C.C. PVT. ONLY)
- POLYUREA PAVEMENT MARKING TYPE I - LINE 4" (WHITE 2' DASH , 6' SKIP - P.C.C PVT. ONLY)
- POLYUREA PAVEMENT MARKING TYPE I - LINE 5" (WHITE 10' DASH , 30' SKIP - P.C.C. PVT. ONLY)

- POLYUREA PAVEMENT MARKING TYPE I - LINE 8" (WHITE EDGE LINE - P.C.C. PVT. ONLY)
- POLYUREA PAVEMENT MARKING TYPE I - LINE 12" (WHITE GORE CHEVRONS SPACED @ 30' CENTERS - P.C.C. PVT. ONLY)
- POLYUREA PAVEMENT MARKING TYPE I - LINE 12" (WHITE SHOULDER DIAGONALS SPACED @ 500' CENTERS (40' AT BRIDGES))
- RAISED REFLECTIVE PAVEMENT MARKER (1-WAY YELLOW / OPAQUE)
- RAISED REFLECTIVE PAVEMENT MARKER (1-WAY CRYSTAL / OPAQUE)
- RAISED REFLECTIVE PAVEMENT MARKER (BRIDGE)
- THERMOPLASTIC PAVEMENT MARKING - LETTERS AND SYMBOLS
- POLYUREA PAVEMENT MARKING TYPE I - LETTERS AND SYMBOLS
- PREFORMED PLASTIC PAVEMENT MARKING, TYPE B - INLAID - LINE 8" (WHITE 3' DASH , 9' SKIP)
- POLYUREA PAVEMENT MARKING TYPE I - LINE 8" (WHITE 3' DASH , 9' SKIP - P.C.C. PVT. ONLY)
- PREFORMED PLASTIC PAVEMENT MARKING, TYPE B - INLAID - LINE 8"

DESIGNED - JC	REVISED -		STATE OF ILLINOIS DEPARTMENT OF TRANSPORTATION		PAVEMENT MARKING & SIGNING PLAN I-80 MAINLINE			F.A.I. RTE.	SECTION	COUNTY	TOTAL SHEETS	SHEET NO.	
USER NAME = default	DRAWN - JC							REVISED -	80	99(4&4-1)RS-3	WILL	203	64
PLOT SCALE = *SCALE*	CHECKED - RR							REVISED -	CONTRACT NO. 60M66				
PLOT DATE = 1/19/2011	DATE - 1/20/2011							REVISED -	FED. ROAD DIST. NO. ILLINOIS FED. AID PROJECT				
SCALE: 1"=50' SHEET NO. 3 OF 18 SHEETS STA. 578+00.00 TO STA. 593+00.00													

FILE NAME = c:\ncdd\lib\p\rose\p\groot_lakes\dms34565\0160M66-shc-pmk12.dgn