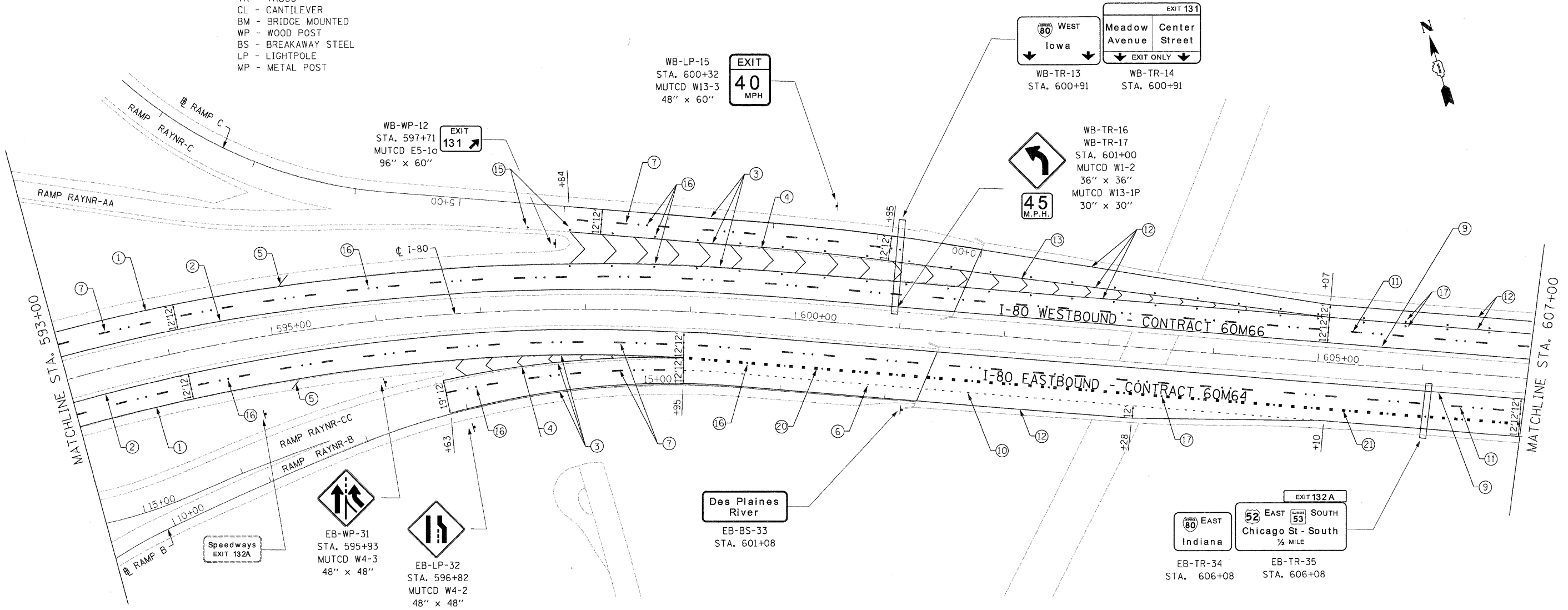
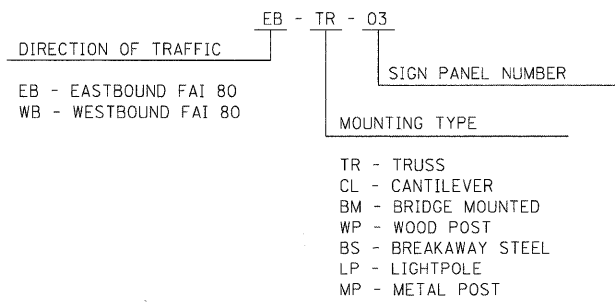


NOTES

- SEE IDOT DISTRICT 1 DETAILS FOR TC-12 'MULTI-LANE FREEWAY PAVEMENT MARKING DETAILS' FOR PLACEMENT AND TYPE OF RAISED REFLECTIVE PAVEMENT MARKERS.
- FOR PROPOSED PAVEMENT MARKINGS IN THE PCC SECTIONS, USE POLYUREA PAVEMENT MARKINGS ACCORDING TO DISTRICT 1 DETAIL TC-12.
- REFER TO ROADWAY PLANS FOR LIMITS OF RESURFACING.
- ALL EASTBOUND WORK IS IN CONTRACT 60M64 AND ALL WESTBOUND WORK IS IN CONTRACT 60M66.

**GUIDE SIGN SEQUENCE
NUMBERING CODE**



- | | |
|--|---|
| ① THERMOPLASTIC PAVEMENT MARKING - LINE 4" (WHITE EDGE LINE) | ⑫ POLYUREA PAVEMENT MARKING TYPE I - LINE 8" (WHITE EDGE LINE - P.C.C. PVT. ONLY) |
| ② THERMOPLASTIC PAVEMENT MARKING - LINE 4" (YELLOW EDGE LINE) | ⑬ POLYUREA PAVEMENT MARKING TYPE I - LINE 12" (WHITE GORE CHEVRONS SPACED @ 30' CENTERS - P.C.C. PVT. ONLY) |
| ③ THERMOPLASTIC PAVEMENT MARKING - LINE 8" (WHITE EDGE LINE) | ⑭ POLYUREA PAVEMENT MARKING TYPE I - LINE 12" (WHITE SHOULDER DIAGONALS SPACED @ 500' CENTERS (40' AT BRIDGES)) |
| ④ THERMOPLASTIC PAVEMENT MARKING - LINE 12" (WHITE GORE CHEVRONS SPACED @ 30' CENTERS) | ⑮ RAISED REFLECTIVE PAVEMENT MARKER (1-WAY YELLOW / OPAQUE) |
| ⑤ THERMOPLASTIC PAVEMENT MARKING - LINE 12" (WHITE SHOULDER DIAGONALS SPACED @ 500' CENTERS) | ⑯ RAISED REFLECTIVE PAVEMENT MARKER (1-WAY CRYSTAL / OPAQUE) |
| ⑥ THERMOPLASTIC PAVEMENT MARKING - LINE 4" (WHITE 2' DASH , 6' SKIP) | ⑰ RAISED REFLECTIVE PAVEMENT MARKER (BRIDGE) |
| ⑦ PREFORMED PLASTIC PAVEMENT MARKING , TYPE B - INLAID - LINE 5" (WHITE 10' DASH , 30' SKIP) | ⑱ THERMOPLASTIC PAVEMENT MARKING - LETTERS AND SYMBOLS |
| ⑧ POLYUREA PAVEMENT MARKING TYPE I - LINE 4" (WHITE EDGE LINE - P.C.C. PVT. ONLY) | ⑲ POLYUREA PAVEMENT MARKING TYPE I - LETTERS AND SYMBOLS |
| ⑨ POLYUREA PAVEMENT MARKING TYPE I - LINE 4" (YELLOW EDGE LINE - P.C.C. PVT. ONLY) | ⑳ PREFORMED PLASTIC PAVEMENT MARKING, TYPE B - INLAID - LINE 8" (WHITE 3' DASH , 9' SKIP) |
| ⑩ POLYUREA PAVEMENT MARKING TYPE I - LINE 4" (WHITE 2' DASH , 6' SKIP - P.C.C. PVT. ONLY) | ㉑ POLYUREA PAVEMENT MARKING TYPE I - LINE 8" (WHITE 3' DASH , 9' SKIP - P.C.C. PVT. ONLY) |
| ⑪ POLYUREA PAVEMENT MARKING TYPE I - LINE 5" (WHITE 10' DASH , 30' SKIP - P.C.C. PVT. ONLY) | ㉒ PREFORMED PLASTIC PAVEMENT MARKING, TYPE B - INLAID - LINE 8" |

1/19/2011 11:12:51 AM \$FILE\$

DESIGNED - JC	REVISED -		STATE OF ILLINOIS DEPARTMENT OF TRANSPORTATION		PAVEMENT MARKING & SIGNING PLAN I-80 MAINLINE			F.A.I. RTE.	SECTION	COUNTY	TOTAL SHEETS	SHEET NO.	
USER NAME = default	DRAWN - JC							REVISED -	80	99(4&4-1)RS-3	WILL	203	65
PLOT SCALE = #SCALE#	CHECKED - RR							REVISED -	CONTRACT NO. 60M66				
PLOT DATE = 1/19/2011	DATE - 1/20/2011							REVISED -	FED. ROAD DIST. NO. ILLINOIS FED. AID PROJECT				
SCALE: 1"=50'			SHEET NO. 4 OF 18 SHEETS			STA. 593+00.00 TO STA. 607+00.00							

FILE NAME = c:\oad\lib\p\rosse\pwrgrout.lakes\dms34565\0160M66-shr-pmk13.dgn