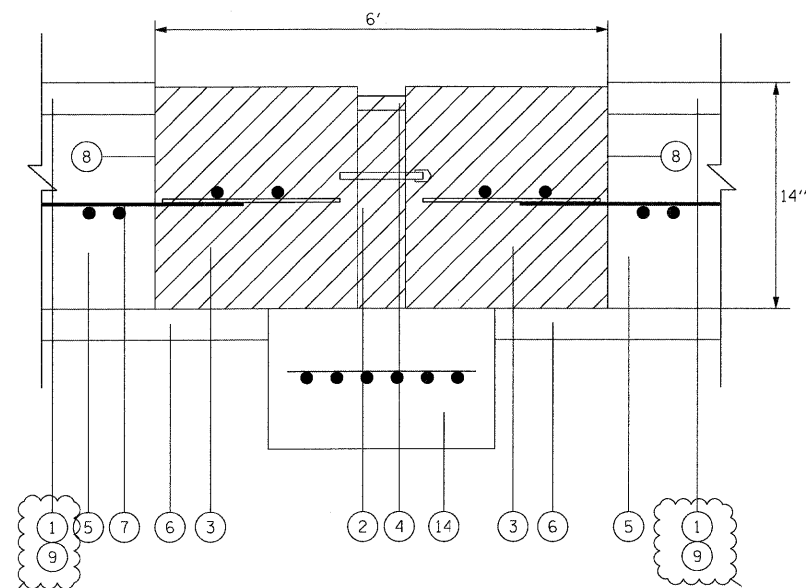


PLAN VIEW OF EXISTING PAVEMENT RELIEF JOINT

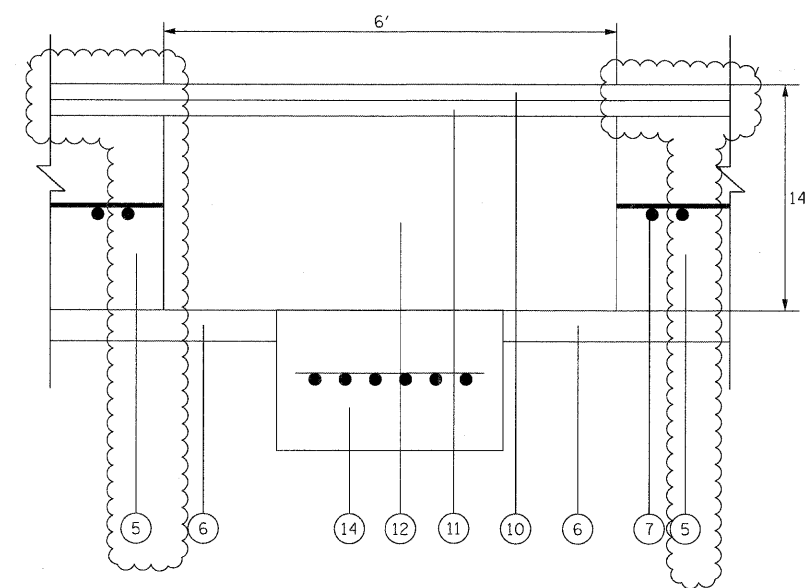
LEGEND:

- ① EXISTING SMA OVERLAY, 4"
- ② EXISTING PREFORMED JOINT FILLER REMOVAL
- ③ EXISTING PORTLAND CEMENT CONCRETE REMOVAL
- ④ EXISTING HOT POURED JOINT SEALER REMOVAL
- ⑤ EXISTING P.C.C. PAVEMENT, 10"
- ⑥ EXISTING SUB-BASE
- ⑦ EXISTING C.R.C. PAVEMENT REINFORCEMENT
- ⑧ SAW CUT (FULL DEPTH)
- ⑨ PROPOSED HOT-MIX ASPHALT REMOVAL, 4"
- ⑩ POLYMERIZED HOT-MIX ASPHALT SURFACE COURSE
STONE MATRIX ASPHALT, N80, 2"
- ⑪ POLYMERIZED HOT-MIX ASPHALT BINDER COURSE
STONE MATRIX ASPHALT, N80, 2"
- ⑫ CLASS D PATCHES, TYPE III, 10 INCH
- ⑬ WHEEL SAW CUT
- ⑭ SLEEPER SLAB (NOT TO BE REMOVED OR DAMAGED)

NOTE:
REMOVAL AND DISPOSAL OF EXISTING PAVEMENT RELIEF JOINTS, AS SHOWN ON THE PLANS, WILL NOT BE PAID FOR SEPARATELY, BUT WILL BE INCLUDED IN THE COST OF THE CLASS D PATCH REPLACEMENT AT THE SAME LOCATION



SECTION A-A
EXISTING PAVEMENT RELIEF JOINT TO BE REMOVED (TYPICAL)



SECTION A-A
PROPOSED PAVEMENT RELIEF JOINT
TO BE REPLACED BY CLASS D PATCH (TYPICAL)

DESIGNED	JAM	REVISED	2/16/11
DRAWN	JAM	REVISED	-
CHECKED	RGR	REVISED	-
DATE	1/21/2011	REVISED	-



STATE OF ILLINOIS
DEPARTMENT OF TRANSPORTATION

PAVEMENT RELIEF JOINT REMOVAL AND REPLACEMENT DETAIL
I-80 MAINLINE

SCALE: NTS SHEET NO. 1 OF 3 SHEETS STA. TO STA.

F.A.I. RTE.	SECTION	COUNTY	TOTAL SHEETS	SHEET NO.
80	99 (4 & 4-1) R5-3	WILL	203	90
FED. ROAD DIST. NO. 1 ILLINOIS FED. AID PROJECT			CONTRACT NO. 60M66	