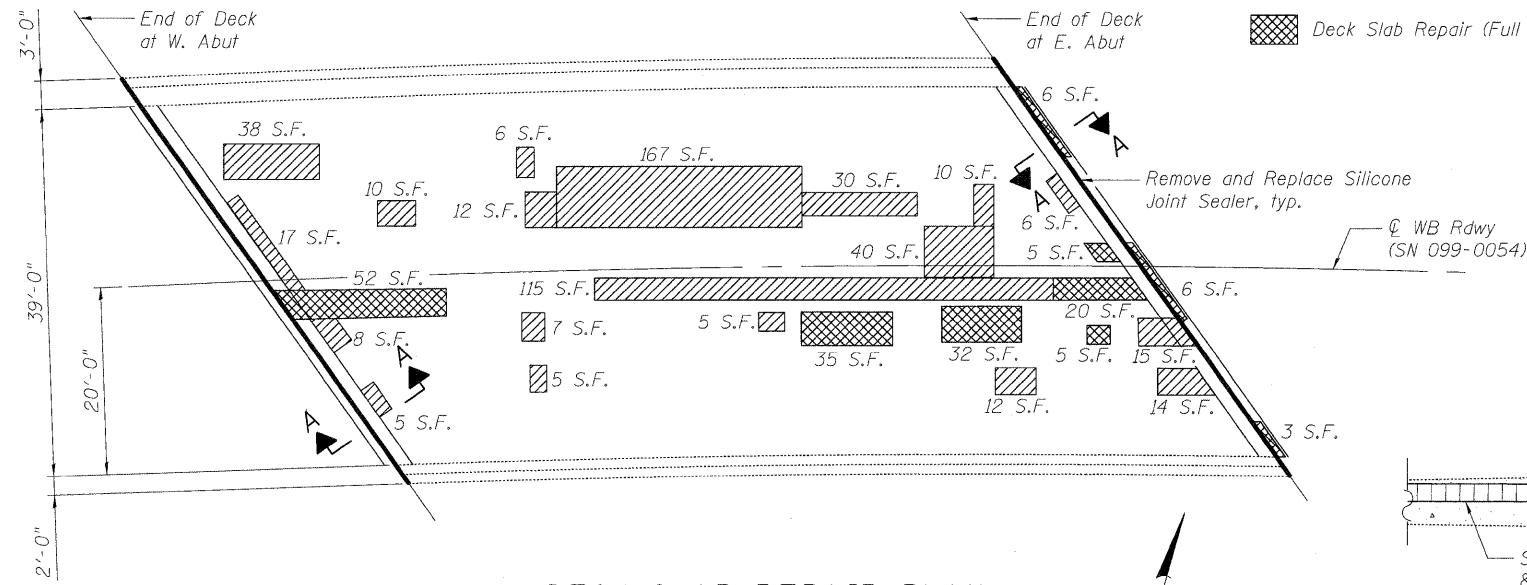
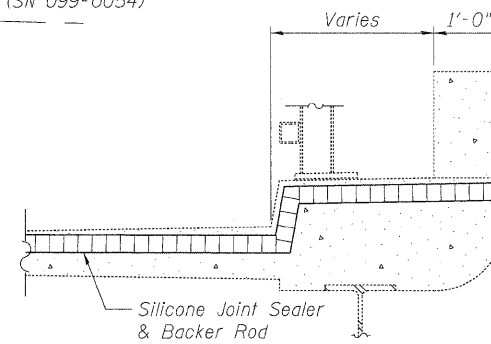


**LEGEND (DECK PLAN)**

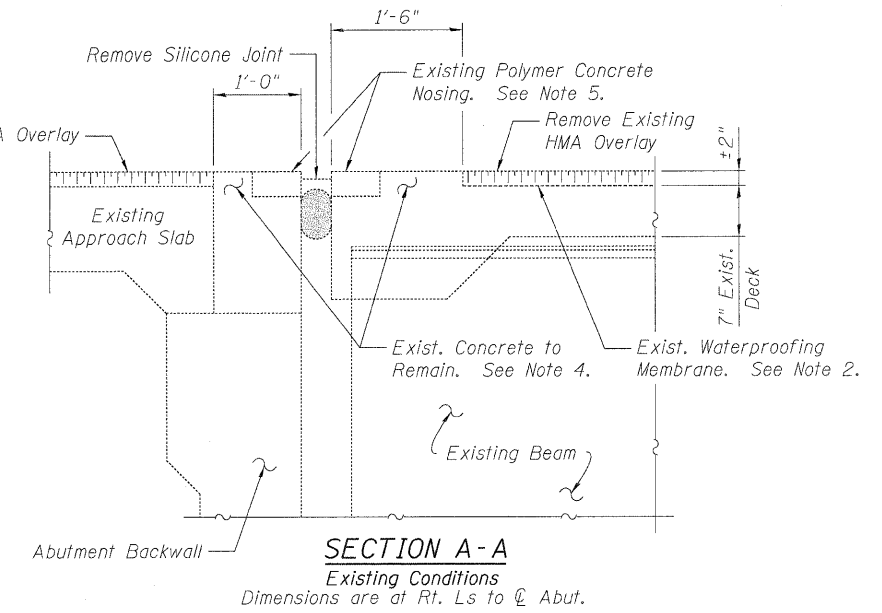
- Deck Slab Repair (Partial)
- Deck Slab Repair (Full Depth, Type II)



**DECK SLAB REPAIR PLAN**

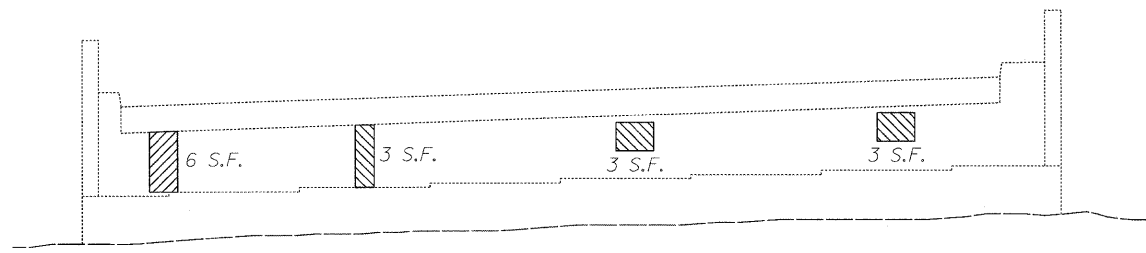


**DETAIL FOR CURB TREATMENT**



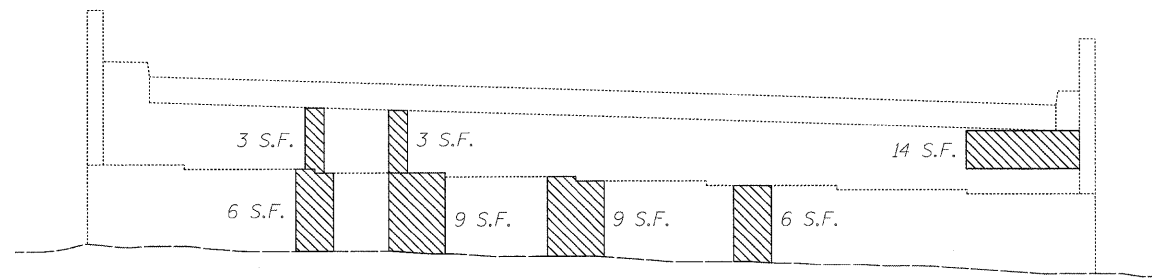
**SECTION A-A**

Existing Conditions  
Dimensions are at Rt. Ls to C. Abut.



**WEST ABUTMENT**

Note: Beam lines not shown for clarity.

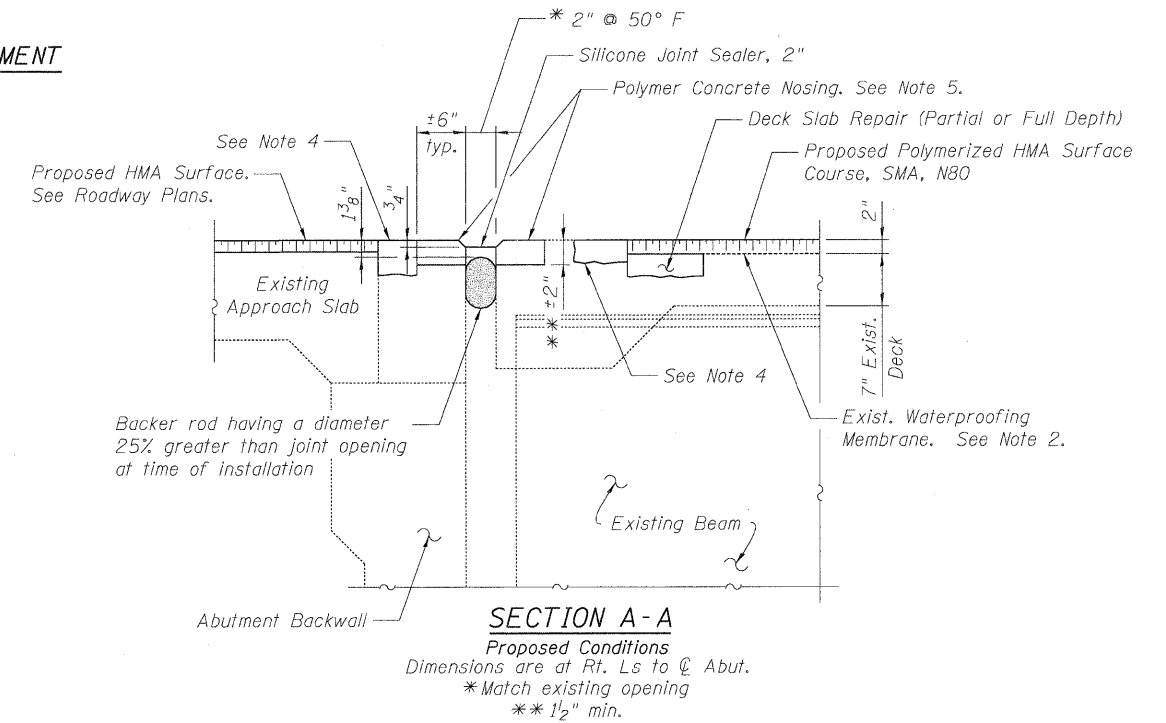


**EAST ABUTMENT**

Note: Beam lines not shown for clarity.

**LEGEND (ABUTMENTS)**

- Structural Repair of Concrete (Depth Less Than or Equal to 5")



**SECTION A-A**

Proposed Conditions  
Dimensions are at Rt. Ls to C. Abut.  
\* Match existing opening  
\*\* 1/2" min.

**NOTES**

1. Removal of the existing silicone joint shall be included in the cost of Silicone Joint Sealer, 2".
2. Contractor shall remove the existing asphalt overlay, and as necessary, adjust the milling depth to prevent damage to the existing waterproofing membrane. See Special Provision Hot-Mix Asphalt Surface Removal (Deck).
3. For existing concrete patches throughout the deck or approach slabs, the Contractor shall grind off the existing concrete patch flush with the existing top of deck/approach slab. This work shall be included in the cost of Hot-Mix Asphalt Surface Removal (Deck).
4. Existing concrete surface to remain. Areas that require repair will be paid for as Deck Slab Repair (Partial). Sawcut edge to provide a uniform width in addition to a clean edge for HMA surface and/or polymer concrete. Cost of sawcut and concrete removal shall be included in the cost of Hot-Mix Asphalt Surface Removal (Deck).
5. Existing polymer concrete to remain. Areas that require repair will be paid for as polymer concrete. Saw cut to provide a clean edge prior to removal. Cost of saw cut and existing polymer concrete removal shall be included in the cost of Polymer Concrete. A quantity of 5 cu. ft. of Polymer Concrete has been estimated for repair.
6. Contractor may remove and replace guardrail components to facilitate joint replacement work. Cost included with Silicone Joint Sealer, 2".
7. The deck slab repair concrete shall be placed to match the top of the existing waterproofing system adjacent to the repair area.
8. After completion of the deck slab repair work, the HMA surface course shall be placed in sufficient thickness in order to match the original surface elevation.

USER NAME = hrueller	DESIGNED - DF	REVISED -
PLOT SCALE = NTS	DRAWN - LAM	REVISED -
PLOT DATE = 1/19/2011 2:17:48 PM	CHECKED - BLU	REVISED -
	DATE - 1/20/2011	REVISED -



**STATE OF ILLINOIS  
DEPARTMENT OF TRANSPORTATION**

**DECK, JOINT AND ABUTMENT REPAIR DETAILS  
WESTBOUND I-80 OVER CENTER STREET RAMP CC  
STRUCTURE NO. 099-0054**

SHEET NO. S-3 OF S-5 SHEETS

F.A.I. RTE. 80	SECTION 99(4&4-1)RS-3	COUNTY WILL	TOTAL SHEETS 203	SHEET NO. 107
FED. ROAD DIST. NO. ILLINOIS FED. AID PROJECT CONTRACT NO. 60M66				