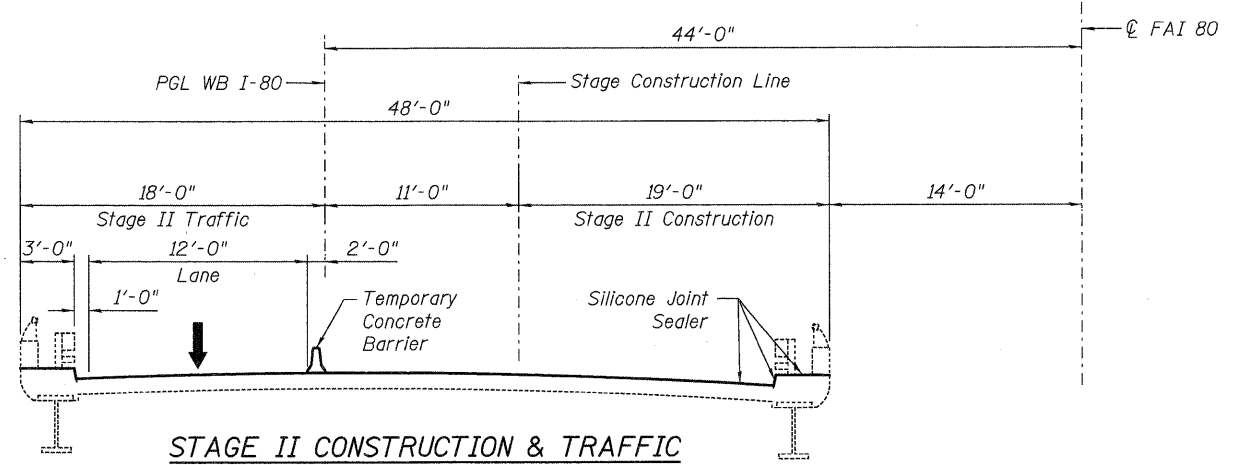


**STAGE I CONSTRUCTION & TRAFFIC
APPROACH SPANS SHOWN**
Fascia Beams Shown
Interior Beams Not Shown
(Looking East)



**STAGE II CONSTRUCTION & TRAFFIC
APPROACH SPANS SHOWN**
Fascia Beams Shown
Interior Beams Not Shown
(Looking East)

NOTES:

1. Sections shown are typical except at beginning and ending of bridge where widths vary to accommodate the ramps. See roadway plans for details.
2. Cost of Temporary Concrete Barrier included in Roadway Plans.

USER NAME = jsupencheck	DESIGNED - PCA	REVISED -
PLOT SCALE = 1/1	DRAWN - MN	REVISED -
PLOT DATE = 19-JAN-2011	CHECKED - JFA	REVISED -
	DATE - 1/21/2011	REVISED -



**STATE OF ILLINOIS
DEPARTMENT OF TRANSPORTATION**

**CONSTRUCTION STAGING
WESTBOUND FAI-80 OVER DES PLAINES RIVER
STRUCTURE NO. 099-0057**

F.A.I. RTE.	SECTION	COUNTY	TOTAL SHEETS	SHEET NO.
80	99 (4&4-1) RS-3	WILL	203	113
CONTRACT NO. 60M66			FED. ROAD DIST. NO. 1 ILLINOIS FED. AID PROJECT	