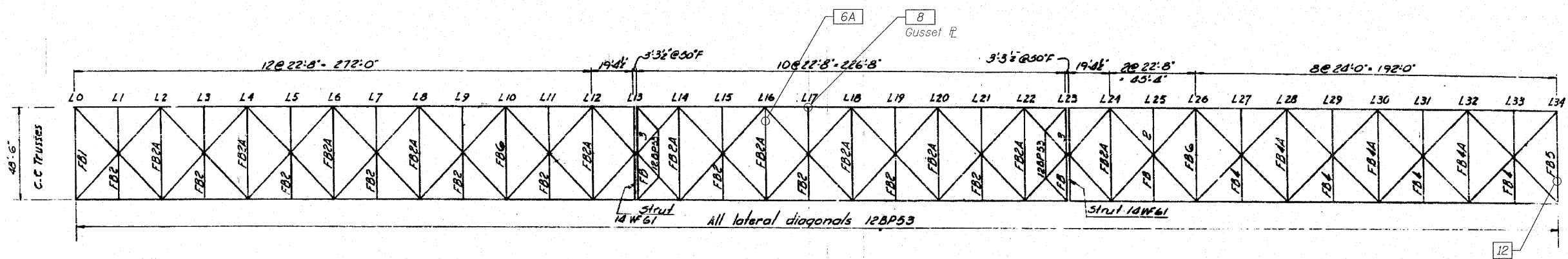


LEGEND:

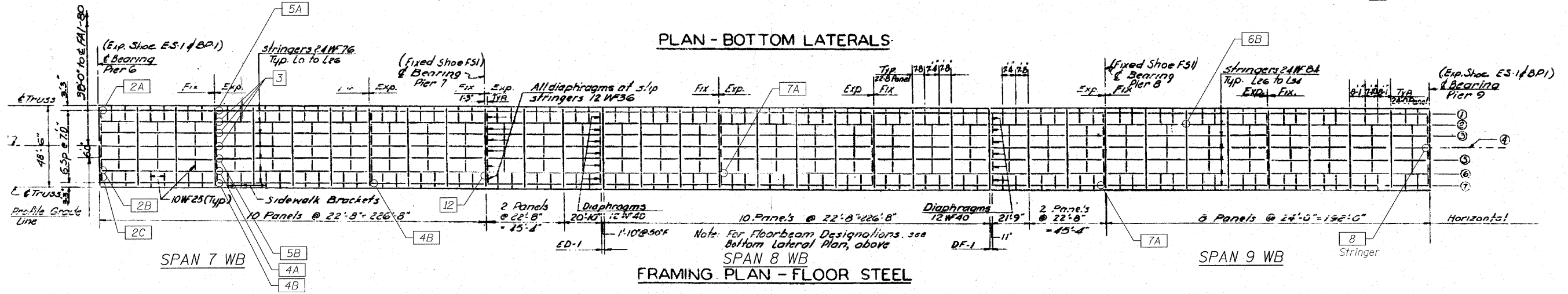
1 Detail 1

NOTES:

1. Work this sheet with Sheets S-9 to S-12 of 35.
2. Drawing shows plan of floor beams, stringers, diaphragms, lateral diagonals, struts and sidewalk framing. All labels and numbering of the framing members are according to the 1960 design plans.
3. For schedule of repairs, see Sheet S-12 of 35.



PLAN - BOTTOM LATERALS



FRAMING PLAN - FLOOR STEEL

USER NAME = default	DESIGNED - MEA	REVISED -
PLOT SCALE = 1/8"=1'-0"	DRAWN - LK	REVISED -
PLOT DATE = 2/8/2011	CHECKED - MRI	REVISED -
	DATE = 2/8/2011	REVISED -



STATE OF ILLINOIS
DEPARTMENT OF TRANSPORTATION

FRAMING PLAN SPANS 4-9
WESTBOUND FAI-80 OVER DES PLAINES RIVER
STRUCTURE NO. 099-0057
SHEET NO. S-8 OF 35 SHEETS

F.A.I. RTE.	SECTION	COUNTY	TOTAL SHEETS	SHEET NO.
80	99 (4&4-1) RS-3	WILL	203	117
CONTRACT NO. 60M66				
FED. ROAD DIST. NO. 1 ILLINOIS FED. AID PROJECT				

FILE NAME = c:\oad\11b\pa\lmeuller\pgrast\laks\dms34565\0990057-60M66-288-FP1.dgn