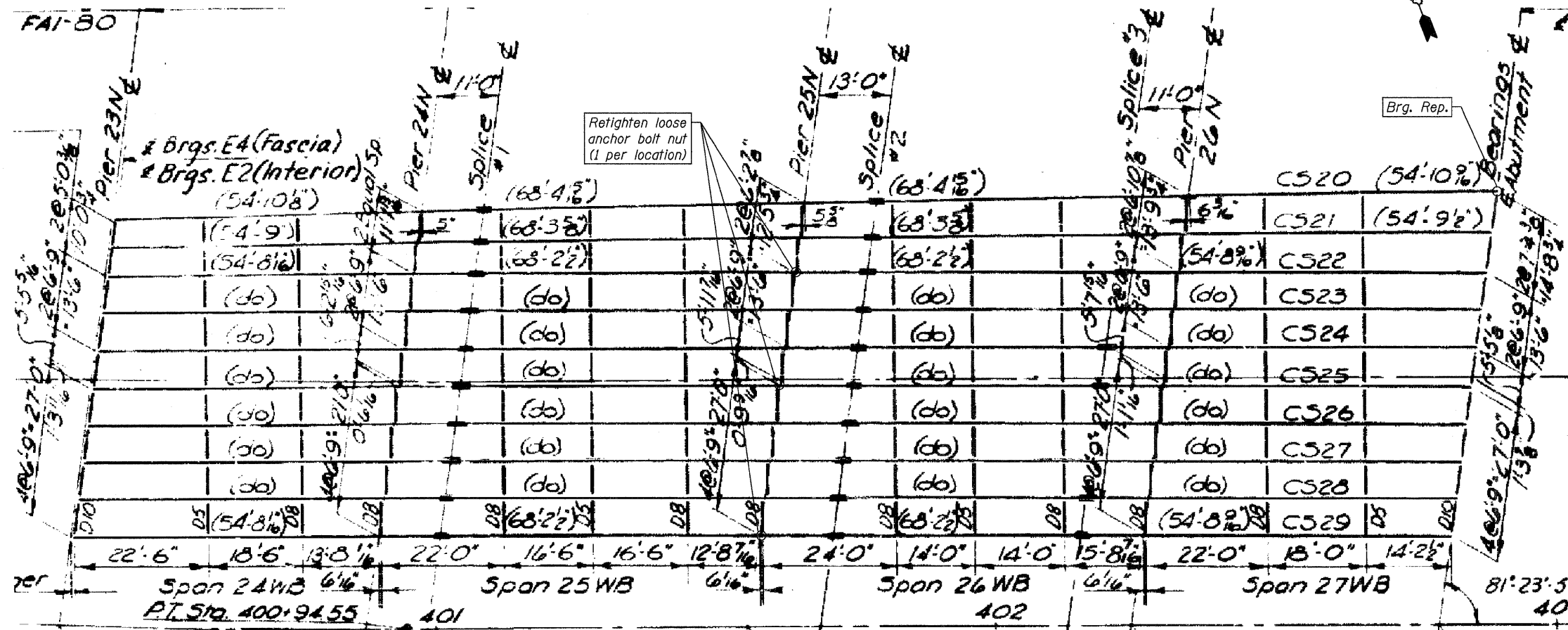


**LEGEND:**

1 Detail 1

**NOTES:**

1. Work this sheet with Sheets S-8, S-9, S-11 and S-12 of 35.
2. Drawing shows plan of floor beams, stringers and diaphragms. All labels and numbering of the framing members are according to the 1960 design plans.
3. For schedule of repairs, see Sheet S-12 of 35.



DESIGNED - MEA	REVISED -
DRAWN - LK	REVISED -
CHECKED - MRI	REVISED -
DATE - 1/21/2011	REVISED -



STATE OF ILLINOIS  
DEPARTMENT OF TRANSPORTATION

FRAMING PLAN  
WESTBOUND FAI-80 OVER DES PLAINES RIVER  
STRUCTURE NO. 099-0057

SHEET NO. S-10 OF 35 SHEETS

F.A.I. RTE.	SECTION	COUNTY	TOTAL SHEETS	SHEET NO.
80	99 (4&4-1) RS-3	WILL	203	119
CONTRACT NO. 60M66				
FED. ROAD DIST. NO. 1 ILLINOIS FED. AID PROJECT				