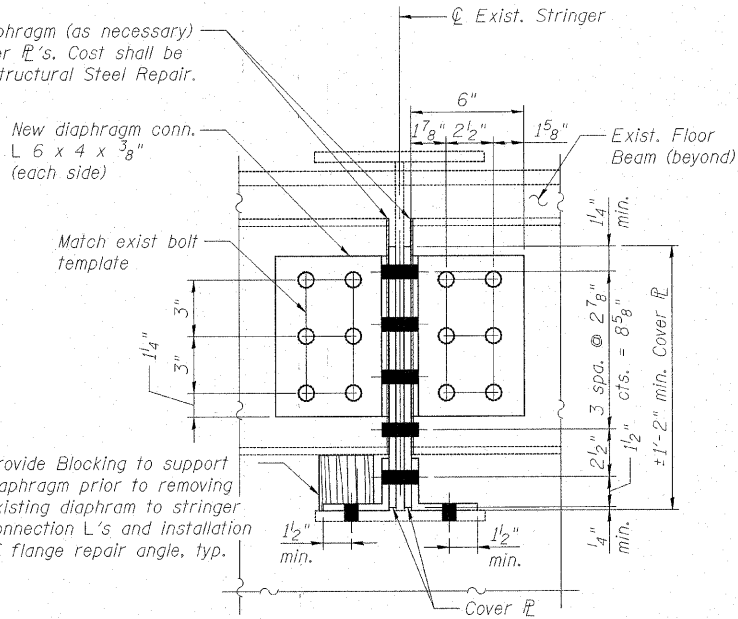
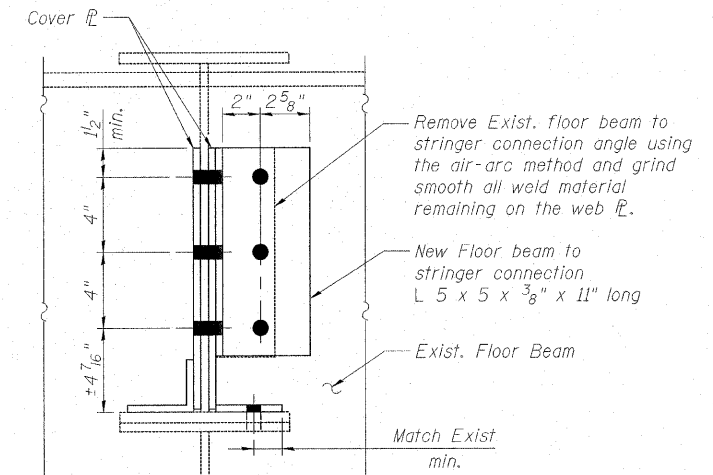


DETAIL 3

Trim exist. diaphragm (as necessary) to fit new Cover PL's. Cost shall be included with Structural Steel Repair.



SECTION A-A



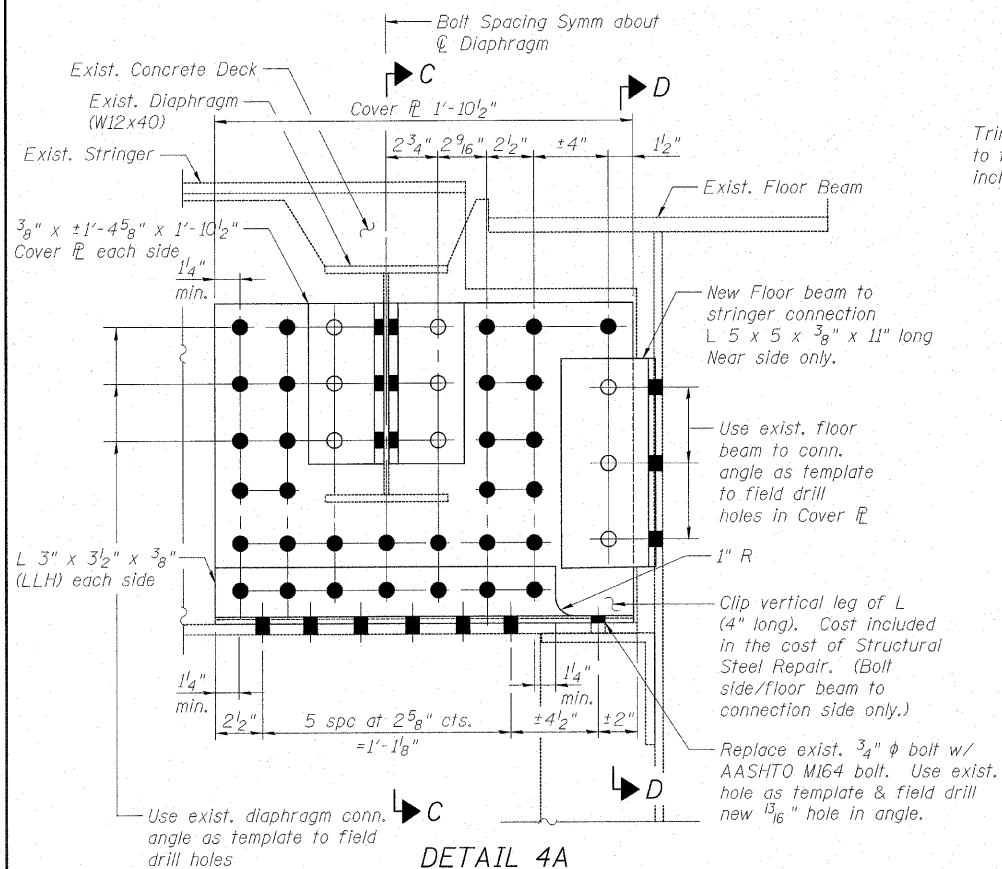
SECTION B-B

**LEGEND**

- New bolt. Use exist. holes in Stringer as template for field drilling new holes.
- New bolt (field drill)

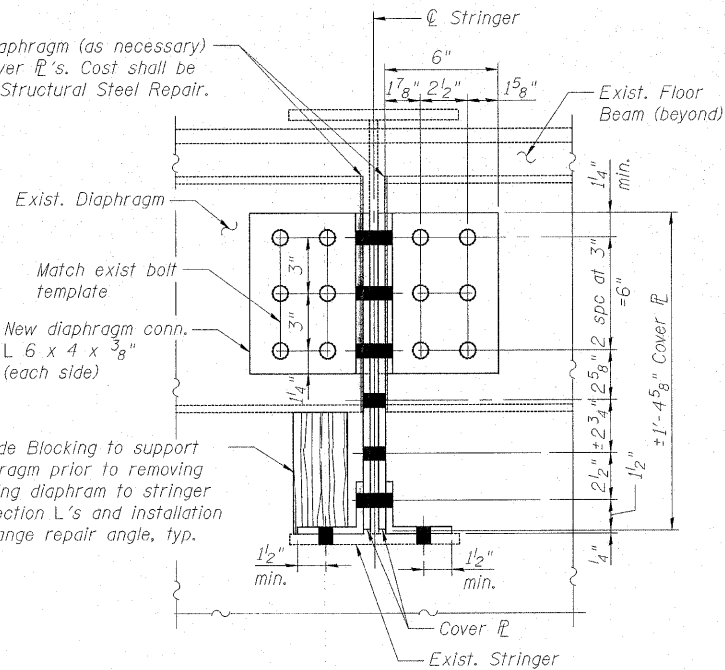
**NOTES**

1. Fasteners shall be high strength bolts AASHTO M164/ASTM A325. Holes shall be 13/16" φ for 3/4" φ bolts.
2. See Sheet S-3 and S-12 of S-35 for additional notes.
3. All cover PL and fill PL shall be 3/8" thick unless noted otherwise.
4. The repair plate and shape lengths shown are anticipated based on existing plan data. Longer repair plates and shapes may be required based on field conditions.
5. For additional requirements, See Special Provision for Structural Steel Repair and Structural Steel Removal

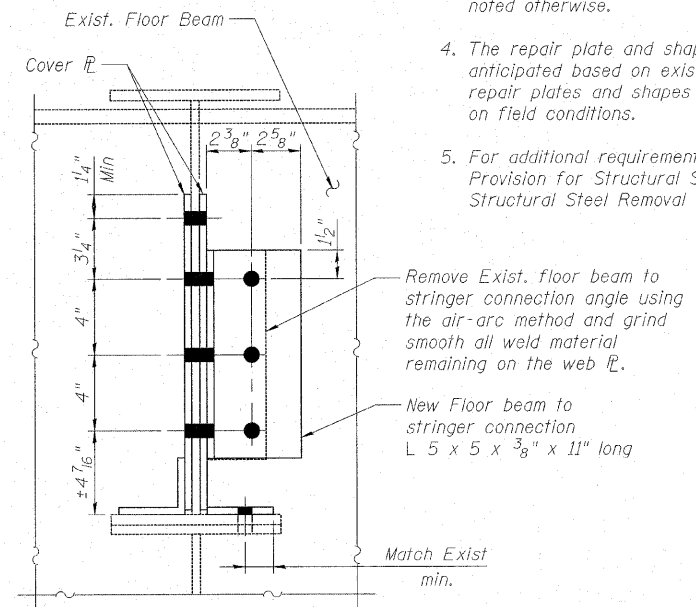


DETAIL 4A

Trim exist. diaphragm (as necessary) to fit new Cover PL's. Cost shall be included with Structural Steel Repair.



SECTION C-C



SECTION D-D

USER NAME = imueber	DESIGNED - DF	REVISED -
PLOT SCALE = NTS	DRAWN - LAM	REVISED -
PLOT DATE = 2/8/2011 4:00:30 PM	CHECKED - BLU	REVISED -
	DATE - 1/20/2011	REVISED -



STATE OF ILLINOIS  
DEPARTMENT OF TRANSPORTATION

STEEL REPAIR DETAILS 4  
WESTBOUND I-80 OVER DES PLAINES RIVER  
STRUCTURE NO. 099-0057

SHEET NO. S-16 OF S-35 SHEETS

F.A.T. RTE. 80	SECTION 99/48.4-1RS-3	COUNTY WILL	TOTAL SHEETS 203	SHEET NO. 125
FED. ROAD DIST. NO. ILLINOIS FED. AID PROJECT			CONTRACT NO. 60M66	