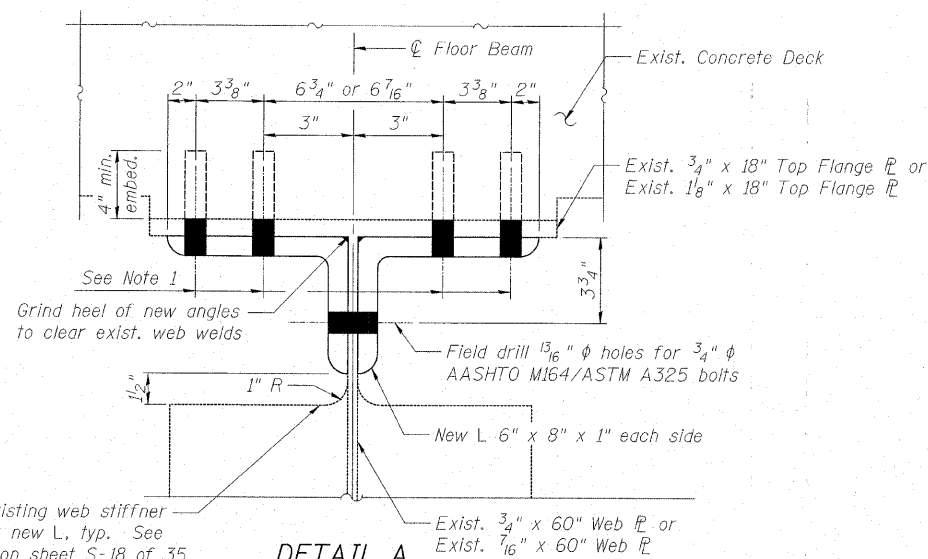
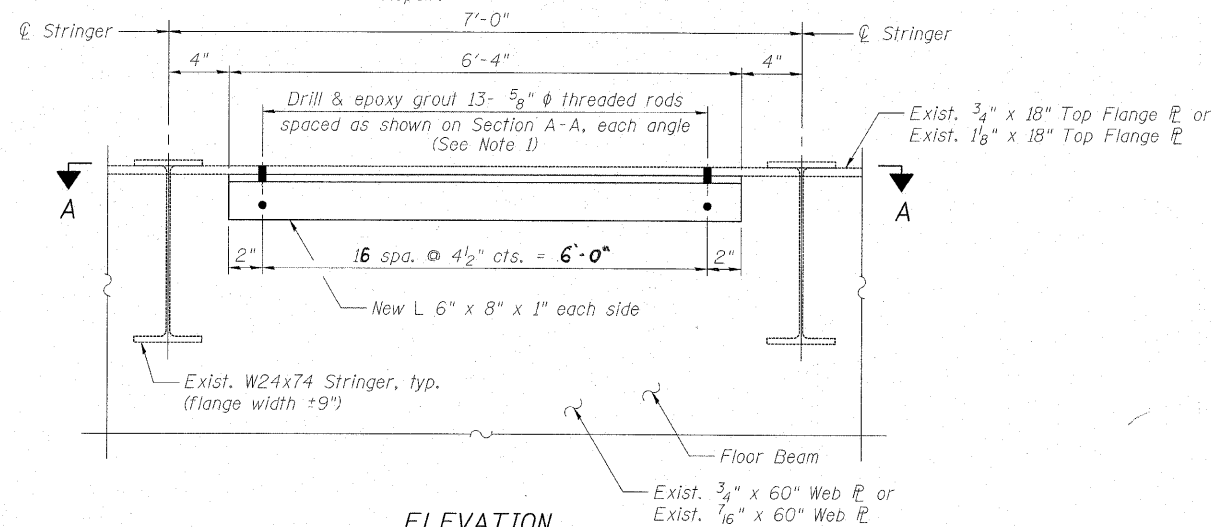


REPAIR DETAIL 12

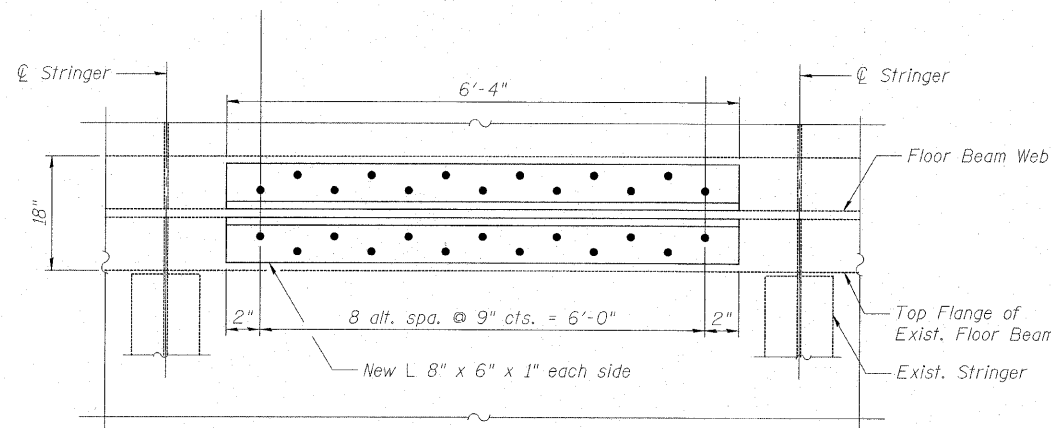


DETAIL A

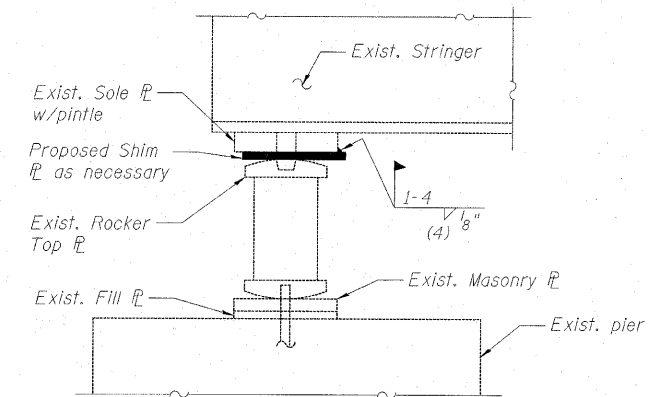
Trim existing web stiffener to clear new L, typ. See note 5 on sheet S-18 of 35 for stiffener removal requirements. Cost included with Structural Steel Repair.



ELEVATION



SECTION A-A



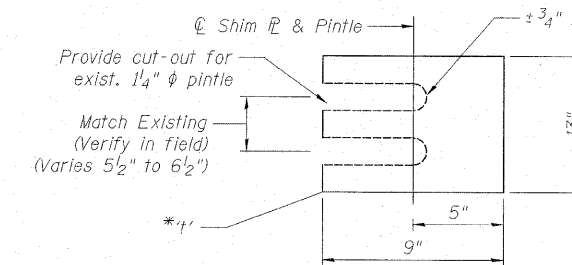
BEARING ELEVATION

REPAIR PROCEDURE

1. Jack existing superstructure.
2. Clean existing bearing between top of rocker and bottom of sole PL, removing pack rust accumulation.
3. Lower Beams
4. Provide shim between sole PL and rocker as necessary to ensure full bearing contact between sole PL and rocker.

NOTES

1. See Special Provision Jack and Clean Bearings.
2. Cleaning existing bearings and shim plates shall be included in the cost of Jack and Clean Bearings.
3. Shim plates shall be AASHTO M270 Gr 36 (ASTM A36).



SHIM PL DETAIL

NOTES

1. Field drill 1 3/16" phi hole 4" into existing concrete and install 3/4" phi expansion anchor bolts with min. pull out capacity of 1.5 kips. Expansion anchor bolts shall be carbon steel. Cost shall be included in the cost of Structural Steel Repair.
2. Cost of field drilling included in the cost of Structural Steel Repair.
3. The repair plate and shape lengths shown are anticipated based on existing plan data. Longer repair plates and shapes may be required based on field conditions.
4. See Sht S-3 and S-12 of S-35 for additional notes.
5. For additional requirements, See Special Provision for Structural Steel Repair and Structural Steel Removal

JACK & CLEAN BEARINGS SCHEDULE

Pier	Span	Stringer	Locations	*1'
3	4	2	1	3/8"
4	4	1-9	9	1/8"
4	5	1-8	8	1/8"-1/2"
12	12	8	1	1/8"
14	14	4	1	1/4"
14	15	4	1	1/8"
18	19	7	1	1/8"
20	21	7	1	1/8"
22	22	3-5, 7	4	1/32"-1/4"
E. Abut.	27	1	1	1/8"

\*Thickness shown is the measured gap between top of rocker PL and bottom of sole PL. Contractor shall verify actual shim PL thickness (if required) after cleaning and lowering beams in place.

USER NAME = Inusion	DESIGNED - TL	REVISED -
PLOT SCALE = NTS	DRAWN - LAM	REVISED -
PLOT DATE = 2/8/2011 5:42:41 PM	CHECKED - BLU	REVISED -
	DATE - 1/20/2011	REVISED -



STATE OF ILLINOIS  
DEPARTMENT OF TRANSPORTATION

STEEL REPAIR DETAILS 7  
WESTBOUND I-80 OVER DES PLAINES RIVER  
STRUCTURE NO. 099-0057  
SHEET NO. S-19 OF S-35 SHEETS

F.A.I. RTE.	SECTION	COUNTY	TOTAL SHEETS	SHEET NO.
80	99(4&4)-IRS-3	WILL	203	128
FED. ROAD DIST. NO. ILLINOIS FED. AID PROJECT			CONTRACT NO. 60M66	