

Removal quantity is included for payment with Deck Slab Repair (Partial).

LEGEND:

	Deck Slab Repair (Partial)
	Deck Slab Repair (Full Depth, Type I)
	Deck Slab Repair (Full Depth, Type II)
	Approach Slab Repair (Partial Depth)

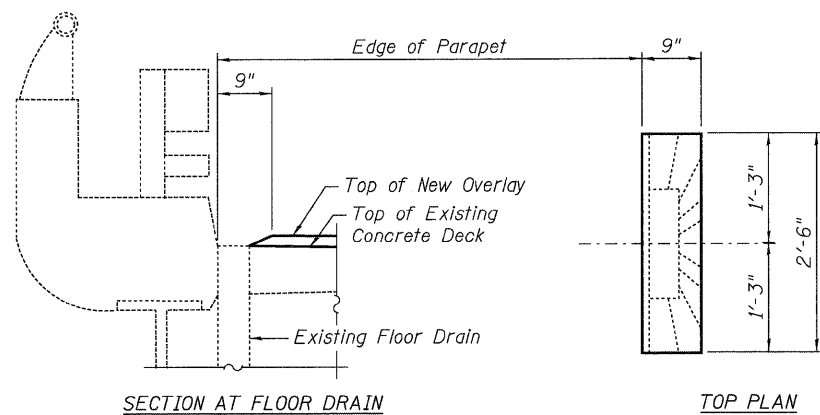
BILL OF MATERIAL

ITEM	UNIT	TOTAL
Deck Slab Repair (Partial)	Sq.Yd.	547
Deck Slab Repair (Full Depth, Type I)	Sq.Yd.	10 **
Deck Slab Repair (Full Depth, Type II)	Sq.Yd.	100
Silicone Joint Sealer, 1.75"	Foot	51
Silicone Joint Sealer, 2.5"	Foot	151
Approach Slab Repair (Partial Depth)	Sq.Yd.	25
Polymer Concrete	Cu. Ft.	7.9

**A nominal quantity has been provided to establish a unit price if Type I repairs are required.

NOTES:

1. Remove and replace silicone joint sealer as detailed in Section A-A.
2. Areas of proposed deck repairs are estimated. Actual type, location and dimensions of deck repairs are to be determined by the Engineer during construction.
3. Reuse existing drain if drain falls within a full depth repair.
4. For Section B-B, see Sheet No. S-4 of 14.
5. Removal of the existing silicone joint shall be included in the cost of Silicone Joint Sealer, 1.75" or 2.5".
6. Contractor shall remove the existing asphalt wearing surface and, as necessary, adjust the milling depth to prevent damage to the existing waterproofing membrane system. After satisfactory completion of the deck repair work, an asphalt surface course shall be placed in sufficient thickness as to match the elevation of the original surface.
7. The Contractor shall grind off any existing concrete patches flush with the existing top of deck. This shall be included in the cost of Hot-Mix Asphalt Surface Removal (Deck).
8. Deck Slab Repair concrete shall be used up to top of existing waterproofing membrane system. Cost included in Deck Slab Repair pay item.
9. For Typical End of Seal Treatment Detail, see Sheet S-4 of 14.



OVERLAY TREATMENT AT FLOOR DRAIN

DESIGNED - PCA	REVISD -		STATE OF ILLINOIS DEPARTMENT OF TRANSPORTATION		DECK AND EXPANSION JOINT REPAIRS WESTBOUND FAI-80 OVER RAILROAD/GARDNER STREET STRUCTURE NO. 099-0061		F.A.I. RTE.	SECTION	COUNTY	TOTAL SHEETS	SHEET NO.
USER NAME = lsupencheck	DRAWN - LK						80	99 (4&4-1) RS-3	WILL	203	154
PLOT SCALE = 1:1	CHECKED - ACF						CONTRACT NO. 60M66				
PLOT DATE = 19-JAN-2011	DATE - 1/21/2011						FED. ROAD DIST. NO. 1 ILLINOIS FED. AID PROJECT				
FILE NAME = IP_PWP\dms34565\0990061-60M66-003-DECK.WB.DGN		SHEET NO. S-3 OF 14 SHEETS									