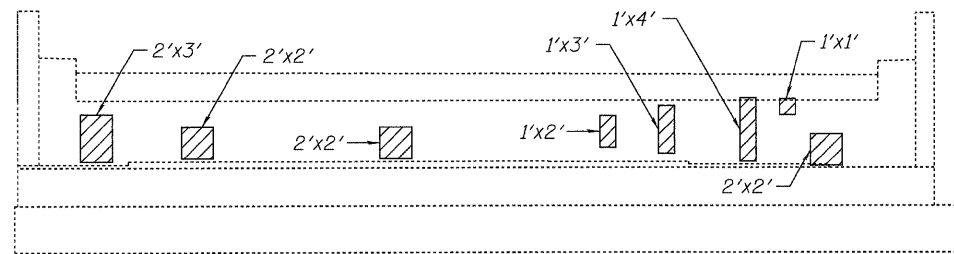
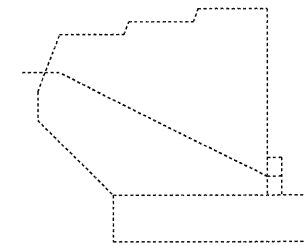


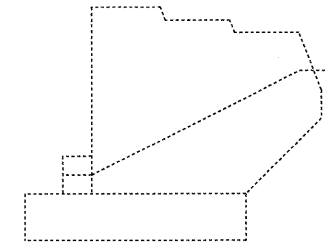
ELEVATION - NW ABUTMENT
Looking West



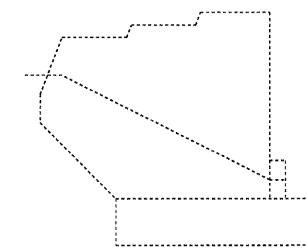
ELEVATION - NE ABUTMENT
Looking East



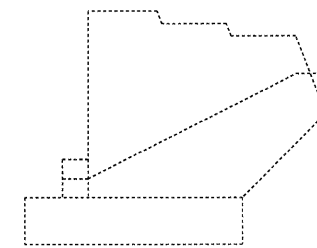
ELEVATION
NW ABUTMENT SOUTH WINGWALL
Outside Face



ELEVATION
NW ABUTMENT NORTH WINGWALL
Outside Face



ELEVATION
NE ABUTMENT SOUTH WINGWALL
Outside Face




ELEVATION
NE ABUTMENT NORTH WINGWALL
Outside Face

BILL OF MATERIAL

ITEM	UNIT	TOTAL
Structural Repair Of Concrete (Depth Equal To Or Less Than 5 Inches)	Sq.Ft.	36

LEGEND:

 Spalled or unsound concrete

NOTES:

- Areas of proposed abutment repairs are estimated. Actual type, location and dimensions of abutment repairs are to be determined by the Engineer during construction.

DESIGNED - PCA	REVISED -
DRAWN - LK	REVISED -
CHECKED - MEA	REVISED -
DATE - 1/21/2011	REVISED -



STATE OF ILLINOIS
DEPARTMENT OF TRANSPORTATION

ABUTMENT REPAIRS
WESTBOUND I-80 OVER RAILROAD/GARDNER STREET
STRUCTURE NO. 099-0061

SHEET NO. S-6 OF 14 SHEETS

F.A.I. RTE.	SECTION	COUNTY	TOTAL SHEETS	SHEET NO.
80	99 (4&4-1) RS-3	WILL	203	157
FED. ROAD DIST. NO. 1 ILLINOIS FED. AID PROJECT			CONTRACT NO. 60M66	