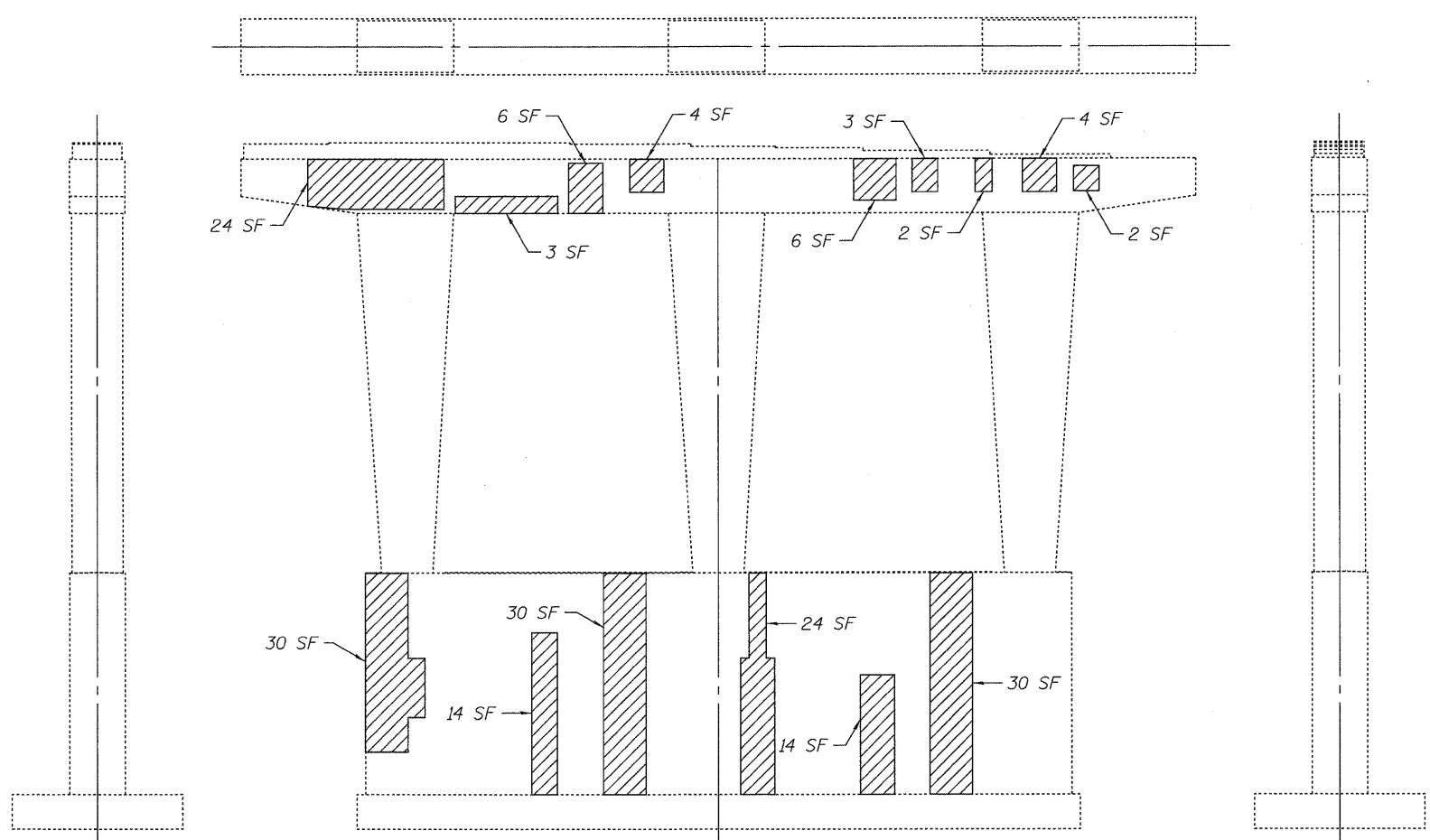


**WEST ELEVATION**  
Looking East



**EAST ELEVATION**  
Looking West

**SOUTH ELEVATION**  
Looking North

**NORTH ELEVATION**  
Looking South

**BILL OF MATERIAL**

ITEM	UNIT	TOTAL
Structural Repair Of Concrete (Depth Greater Than 5 Inches)	Sq.Ft.	97
Structural Repair Of Concrete (Depth Equal To Or Less Than 5 Inches)	Sq.Ft.	291

**LEGEND:**

Spalled or unsound concrete - SF indicates square feet.

**NOTES:**

1. Areas of proposed pier repairs are estimated. Actual type, location and dimensions of pier repairs are to be determined by the Engineer during construction.

DESIGNED - PCA	REVISIONS -
USER NAME = lsupencheck	DRAWN - LK
PLOT SCALE = 1/4"	CHECKED - MEA
PLOT DATE = 19-JAN-2011	DATE - 01/21/2011
FILE NAME = IP_PWP\dms34565\0990063-60M66-007-PIER.DGN	REVISIONS -



**STATE OF ILLINOIS**  
**DEPARTMENT OF TRANSPORTATION**

**PIER 2 REPAIRS**  
**WESTBOUND FAI-80 OVER HICKORY CREEK**  
**STRUCTURE NO. 099-0063**  
SHEET NO. S-7 OF 8 SHEETS

F.A.I. RTE.	SECTION	COUNTY	TOTAL SHEETS	SHEET NO.
80	99 (4&4-1) RS-3	WILL	203	172
FED. ROAD DIST. NO. 1 ILLINOIS FED. AID PROJECT			CONTRACT NO. 60M66	