

F.A.U. RTE.	SECTION	COUNTY	TOTAL SHEETS	SHEET NO.
3602	08-F3000-07-BT	LAKE	60	1
FED. ROAD DIST. NO. 1	ILLINOIS	CONTRACT NO. 63422		

STATE OF ILLINOIS

DEPARTMENT OF TRANSPORTATION

DIVISION OF HIGHWAYS

PLANS FOR PROPOSED FEDERAL AID PROJECT

FAU ROUTE 3602 (GILMER ROAD, COUNTY HIGHWAY V76)  
AT LAKEWOOD FOREST PRESERVE  
FORT HILL TRAIL BIKE PATH UNDERPASS

SECTION 08-F3000-07-BT  
PROJECT NO. TE-00D1 (822)  
LAKE COUNTY FOREST PRESERVE DISTRICT  
LAKE COUNTY  
C-91-484-10



PROJECT LOCATED IN  
FREMONT TOWNSHIP

INDEX OF SHEETS

SHEET NO.	DESCRIPTION
1	Cover Sheet
2	General Notes
3	Summary of Quantities
4	Typical Sections
5	Schedule of Quantities
6	Alignment, Ties & Benchmarks
7-8	Roadway Plan & Profile - Gilmer Road
9	Path Plan & Profile - Bike Path
10	Landscaping and Erosion Control
11-13	Lighting Drawings
14-23	Structural Drawings
24	Soil Boring Logs
25-51	Cross Sections
52-60	Construction Details

IDOT HIGHWAY STANDARDS

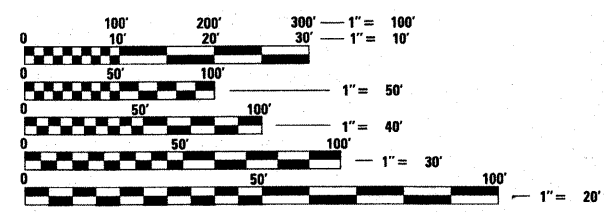
000001-06	STANDARD SYMBOLS, ABBREVIATIONS AND PATTERNS
001001-02	AREAS OF REINFORCEMENT BARS
280001-05	TEMPORARY EROSION CONTROL SYSTEMS
542301-03	PRECAST REINFORCED CONCRETE FLARED END SECTION
542546-01	FLUSH INLET BOX FOR MEDIAN
601101-01	CONCRETE HEADWALL FOR PIPE UNDERDRAIN
701301-04	LANE CLOSURE 2L2W-SHORT TIME OPERATION
701306-03	LANE CLOSURE 2L2W-SLOW MOVE OPERATIONS, DAY ONLY 45 MPH
701326-04	LANE CLOSURE 2L2W PAVEMENT WIDENING 45 MPH
701701-07	URBAN LANE CLOSURE MULTI LANE INTERSECTION
701901-01	TRAFFIC CONTROL DEVICES
TC-18	SIGNING FOR FLAGGING OPERATIONS AT WORK ZONE OPENINGS
TC-22	ARTERIAL ROAD INFORMATION SIGN

LCDOT HIGHWAY STANDARDS

LC 2050	TRIANGULAR SILT DIKE INSTALLATION FOR ROADWAY DITCH OR DRAINAGE DITCH
LC 2051	PERIMETER EROSION BARRIER INSTALLATION
LC 4202	CONCRETE WASHOUT FACILITIES
LC 6020	SUB-SURFACE DRAINS
LC 7000	MODIFIED STANDARD 701011-01
LC 7001	MODIFIED STANDARD 701501-03
LC 7200	DIRECTION INDICATOR BARRICADES
LC 7201	TEMPORARY CONSTRUCTION INFORMATION SIGNS
LC 7202	MODIFIED M.U.T.C.D. TYPICAL APPLICATION DIAGRAM TA-3
LC 7800	TYPICAL PAVEMENT MARKINGS FOR COUNTY HIGHWAYS

DESCRIPTION OF PROJECT

THIS IMPROVEMENT CONSISTS OF EARTH EXCAVATION, BIKEPATH UNDERPASS STRUCTURE, CONSTRUCTION OF STORM SEWERS AND DRAINAGE STRUCTURES, AND RECONSTRUCTION OF EXISTING ROADWAY.

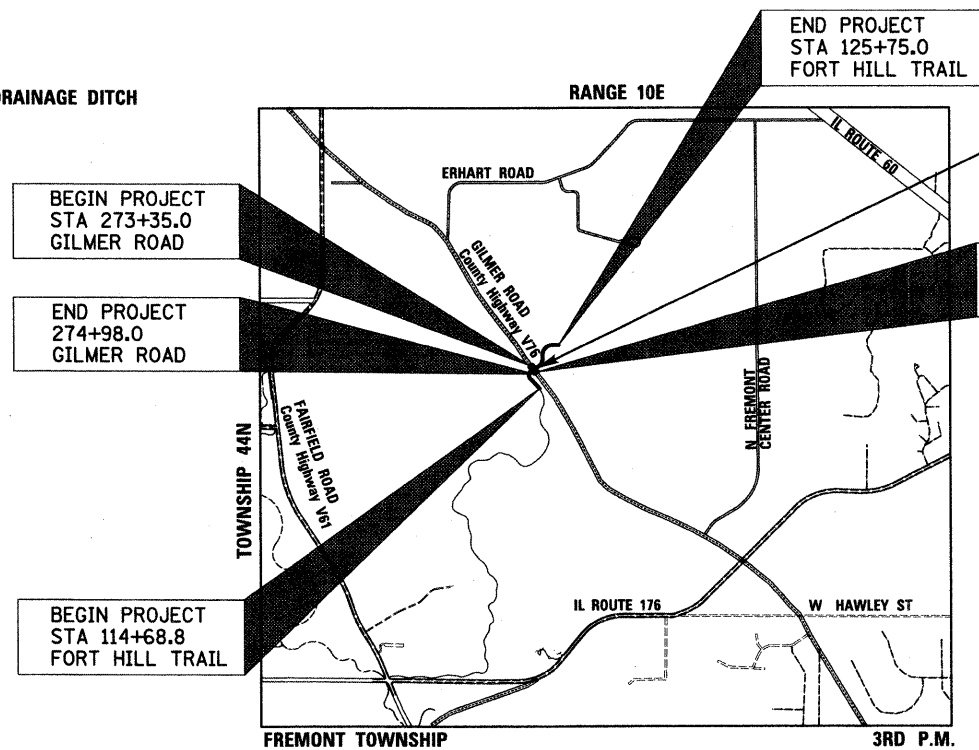


FULL SIZE PLANS HAVE BEEN PREPARED USING STANDARD ENGINEERING SCALES. REDUCED SIZED PLANS WILL NOT CONFORM TO STANDARD SCALES. IN MAKING MEASUREMENTS ON REDUCED PLANS, THE ABOVE SCALES MAY BE USED.

J.U.L.I.E.  
JOINT UTILITY LOCATION INFORMATION FOR EXCAVATION  
1-800-892-0123  
OR 811

with the following  
COUNTY: LAKE  
CITY-TOWNSHIP: WAUCONDA - FREMONT  
SEC. & 1/4 SEC. NO. 20 SW 1/4 NE 1/4 & N 1/2 SE 1/4  
48 HOURS BEFORE YOU DIG  
EXCLUDING SAT., SUN. & HOLIDAYS

CONTRACT NO. 63422



PROJECT LOCATION  
NOT TO SCALE

PROJECT LENGTH:

GILMER ROAD GROSS & NET LENGTH - 163.0 FT (0.031 MILE)  
FORT HILL TRAIL GROSS & NET LENGTH - 1,106.2 (0.210 MILE)

ADT:

GILMER ROAD - 7,300 VPD (2008)

DESIGN SPEEDS:

GILMER ROAD - 55 MPH POSTED SPEED = 50 MPH  
FORT HILL - 20 MPH

DESIGN DESIGNATION:

1113(30) MINOR ARTERIAL 0.90 (B-20)

STATION EQUATION:  
STA 274+14.15 GILMER ROAD =  
STA 119+03.17 FORT HILL TRAIL

PROPOSED UNDERPASS  
STA 118+40.7 TO STA 119+65.7  
SN: 049-N006

STATE OF ILLINOIS  
DEPARTMENT OF TRANSPORTATION  
DIVISION OF HIGHWAYS

APPROVED *[Signature]* 20 10

LAKE COUNTY FOREST PRESERVE DISTRICT

PASSED *[Signature]* 20 10

DISTRICT ONE ENGINEER OF LOCAL ROADS & STREETS

RELEASING FOR BID  
BASED ON LIMITED  
REVIEW *[Signature]* 20 11

DEPUTY DIRECTOR OF HIGHWAYS, REGION ONE ENGINEER

APPLIES TO SHEETS 1-13, 25-60

APPLIES TO SHEETS 14-24

REGISTERED P.E., STATE OF ILLINOIS EXPIRES 11/30/2011

REGISTERED S.E., STATE OF ILLINOIS EXPIRES 11/30/2012



PLANS PREPARED BY:  
**CIVILTECH**  
450 E. Devon Ave, Suite 300 - Itasca, Illinois 60143  
Tel: 630.773.3900 - Fax: 630.773.3975  
www.civiltechinc.com

CONSULTANT ENGINEER: REID T. MAGNER, P.E. CIVILTECH ENGINEERING INC.  
PROGRAM AND OFFICE ENGINEER: CHARLES F. RIDDLE, P.E. (847) 705-4406 SCHAUMBURG, IL