

FED. ROUTE NO.	SECTION	COUNTY	TOTAL SHEETS	SHEET NO.
3602	08-F3000-07-BT	LAKE	60	20
FED. ROAD DIST. NO. 1	ILLINOIS	FED. AID PROJECT-		

Contract #63422

BILL OF MATERIAL
(For Wingwalls)

Bar No.	Size	Length	Shape
d20(E)	#6	4'-10"	^
h20(E)	#4	16'-0"	—
h21(E)	#4	17'-3"	—
h22(E)	#4	17'-8"	—
h23(E)	#4	19'-2"	—
h24(E)	#4	17'-8"	—
h25(E)	#4	16'-11"	—
h26(E)	#4	19'-8"	—
h27(E)	#4	18'-8"	—
n20(E)	#9	9'-0"	U
n21(E)	#8	10'-9"	U
n22(E)	#8	7'-7"	U
t20(E)	#9	16'-8"	—
t21(E)	#7	16'-8"	—
t22(E)	#5	8'-8"	—
t23(E)	#4	8'-8"	—
t24(E)	#5	8'-8"	—
v20(E)	#8	14'-6"	—
v21(E)	#5	10'-3"	—
v22(E)	#4	10'-3"	—
v23(E)	#4	11'-8"	—
v24(E)	#5	10'-8"	—
v25(E)	#4	10'-8"	—
v26(E)	#8	14'-1"	—
v27(E)	#4	11'-3"	—
v28(E)	#5	10'-6"	—
w20(E)	#5	19'-2"	—
w21(E)	#5	18'-5"	—
w22(E)	#5	17'-5"	—
w23(E)	#5	18'-8"	—
w24(E)	#5	17'-8"	—
w25(E)	#5	16'-8"	—
w26(E)	#5	15'-8"	—
w27(E)	#5	17'-2"	—
w28(E)	#5	17'-2"	—

Item	Unit	Quantity
Porous Granular Embankment, Special	Cu. Yd.	211
Structure Excavation	Cu. Yd.	1,625
Concrete Structures	Cu. Yd.	271.1
Formliner Textured Surface	Sq. Ft.	1,310
Reinforcement Bars, Epoxy Coated	Pound	29,130
Geocomposite Wall Drain	Sq. Yd.	238
Pipe Underdrain For Structures, 6"	Foot	138
Rubbed Finish	Sq. Ft.	390
Anti-Graffiti Coating	Sq. Ft.	1,323
Staining Concrete Structures	Sq. Yd.	146

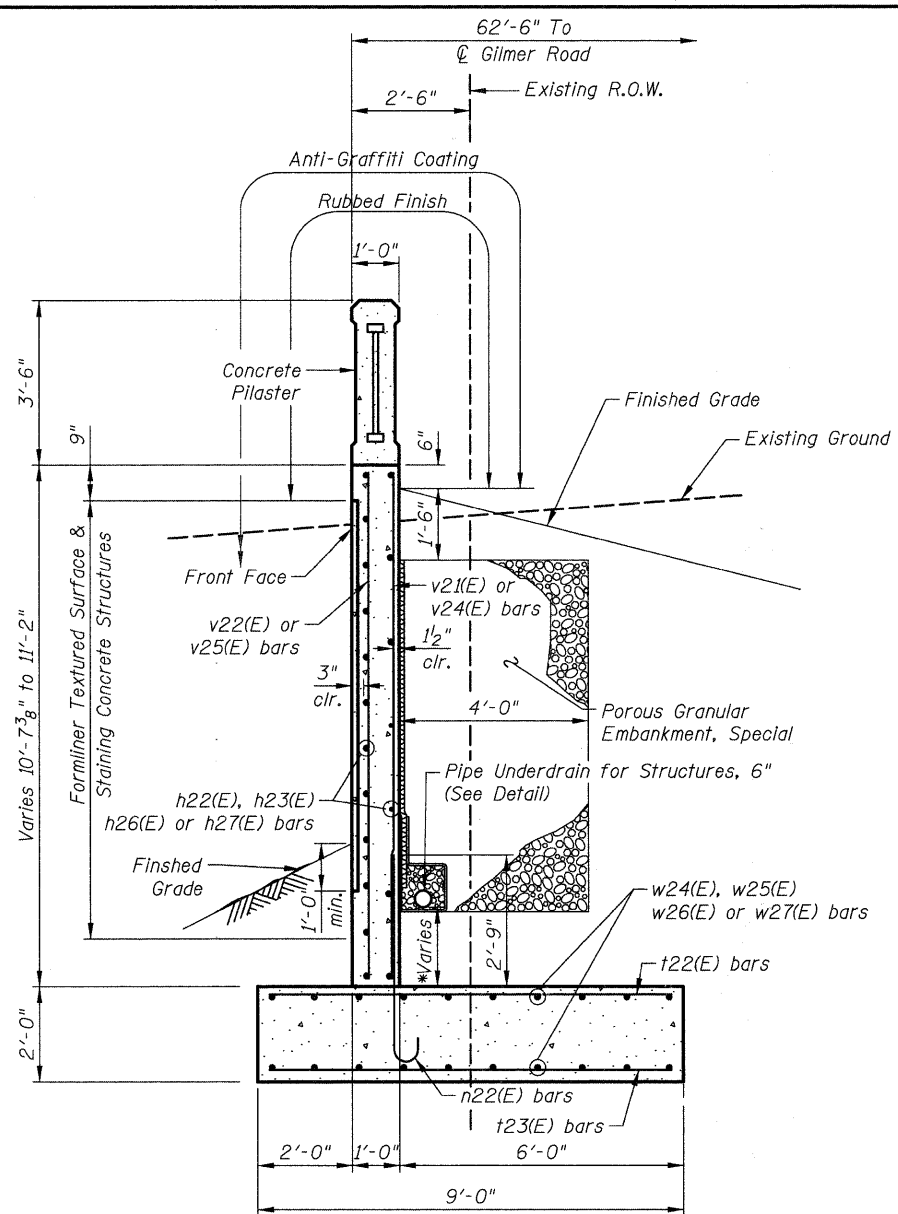
Note: See Sheet S8 for Concrete Pilasters Details
S7 of S11

LAKE COUNTY FOREST PRESERVE DISTRICT

WINGWALL DETAILS
GILMER ROAD TRAIL UNDERPASS
SEC 08-F3000-07-BT
STA. 274+14.15
STRUCTURE NO. 049-N006

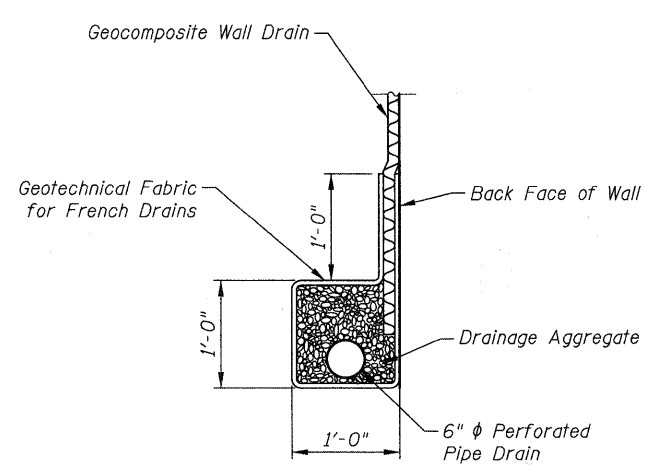
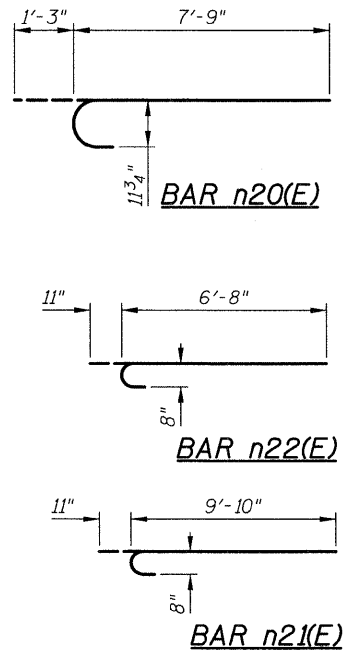
DRAWN BY: D. Atkins
CHECKED BY: G. Hatlestad
DATE: December 17, 2010

REVISIONS	
NAME	DATE

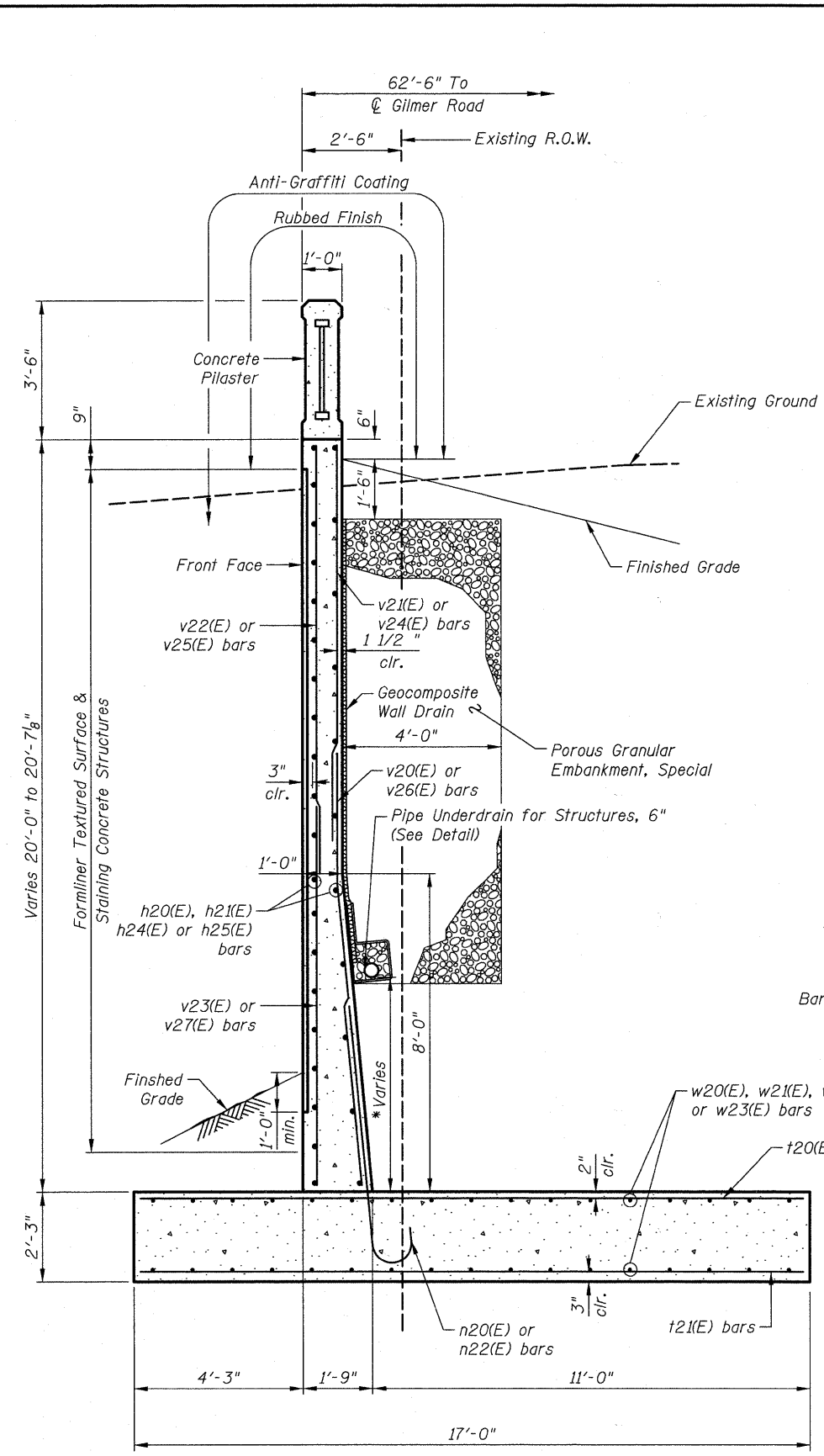


SECTION F-F

* See Sheets S6 & S7 for Pipe Underdrain Invert Elevations



PIPE UNDERDRAIN DETAIL



SECTION E-E

* See Sheets S6 & S7 for Pipe Underdrain Invert Elevations

CIVILTECH
450 E Devon Ave, Suite 300
Itasca, Illinois 60143
Tel: 630.773.3900 Fax: 630.773.3975
www.civiltechinc.com

j:\2130\phase 2\cad\sheet\07_struct\07_wingwall_dfls.dgn 12/15/2010 12:23:31 PM