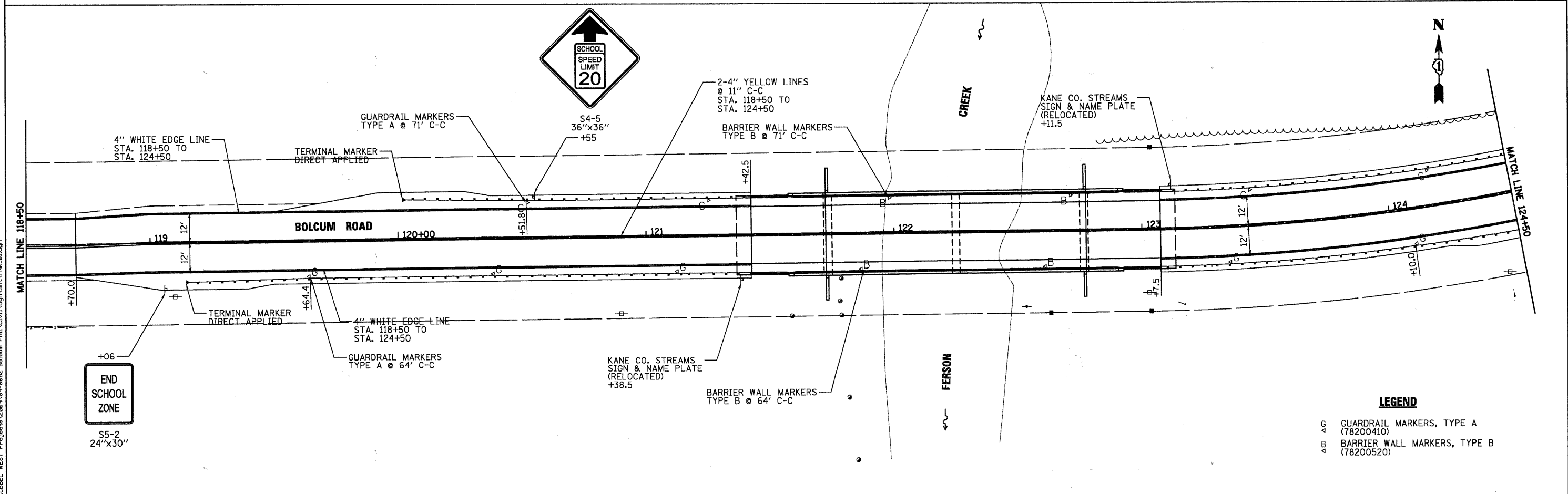
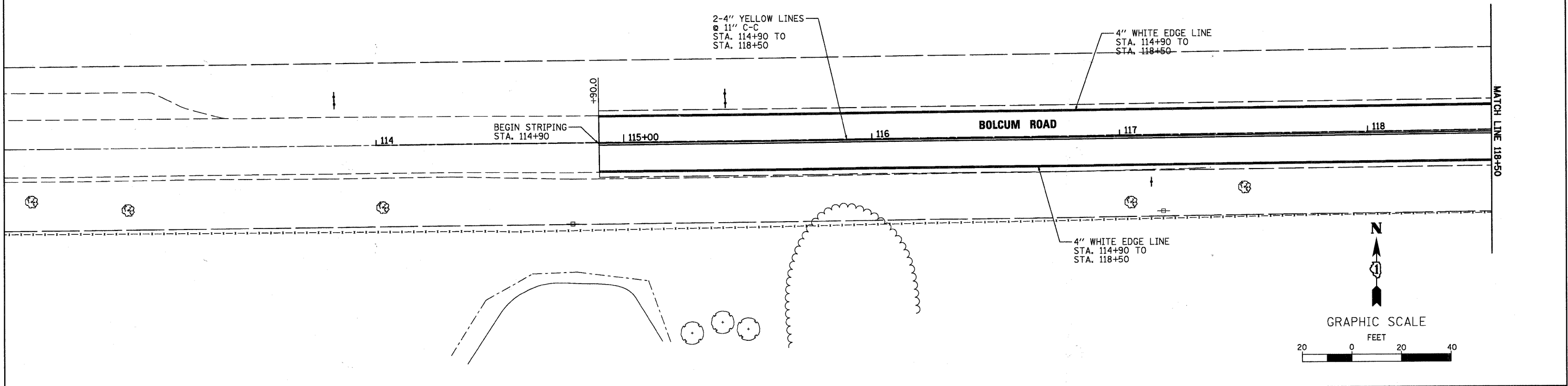


NOTES:

1. ALL SIGN POSTS SHALL BE NEW AND SHALL BE MADE OF WOOD PER SECTION 703 OF THE STANDARD SPECIFICATIONS.
2. PAVEMENT MARKINGS SHALL BE THERMOPLASTIC ON ALL SURFACES.



LEGEND

- G GUARDRAIL MARKERS, TYPE A (78200410)
- B BARRIER WALL MARKERS, TYPE B (78200520)

FILE NAME = P:\CDBEL_WEST_Projects\2009\05-0902_Bolcum_Plan\Drawings\Shit\PMW_01.dgn

WILLS BURKE KELSEY ASSOCIATES LTD. 116 West Main Street, Suite 201 St. Charles, Illinois 60174	USER NAME = #USER#	DESIGNED -	REVISED -	STATE OF ILLINOIS DEPARTMENT OF TRANSPORTATION	PAVEMENT MARKING & SIGNING PLAN		F.A.J. RTE. 2332	SECTION 03-14185-02-BR	COUNTY KANE	TOTAL SHEETS 73	SHEET NO. 20
	PLOT SCALE =	CHECKED -	REVISED -		SCALE:	SHEET NO. 20 OF 73 SHEETS	STA. TO STA.	FED. ROAD DIST. NO. 1 ILLINOIS FED. AID PROJECT		CONTRACT NO. 63521	
	PLOT DATE = 10/21/2010	DATE - 10/22/10	REVISED -								