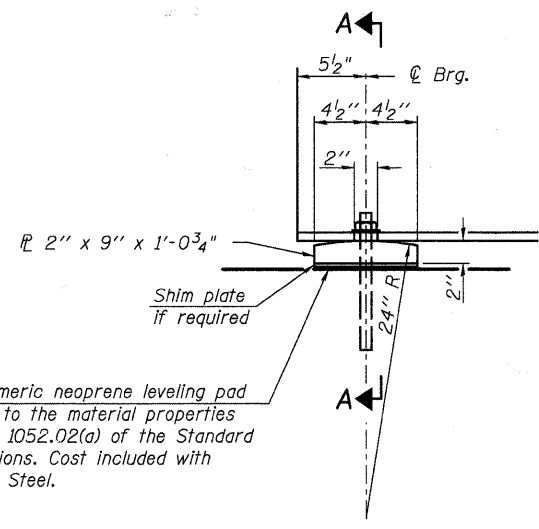


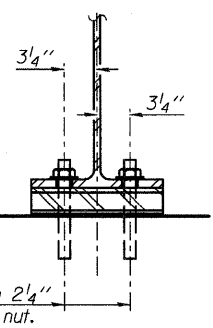
FILE NAME = P:\CBBEL WEST Projects\2009\091-00682 Bolam PH11\Structural\Ugpn\453820-63821-014-Struct.Steel-Details.dgn



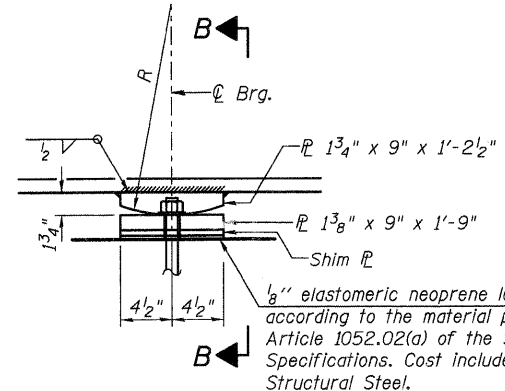
ELEVATION AT ABUTMENT

1/8" elastomeric neoprene leveling pad according to the material properties of Article 1052.02(a) of the Standard Specifications. Cost included with Structural Steel.

1" diameter x 12" anchor bolts with 2 1/4" x 2 1/4" x 5/16" washer under nut. 1 3/8" x 2" slotted hole in flange. 1 1/2" diameter holes in bearing plate.

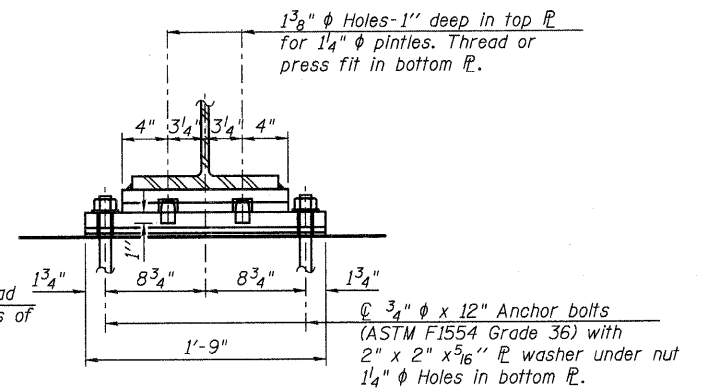


SECTION A-A



ELEVATION AT PIER

1/8" elastomeric neoprene leveling pad according to the material properties of Article 1052.02(a) of the Standard Specifications. Cost included with Structural Steel.



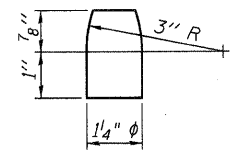
SECTION B-B

1 3/8" diameter Holes - 1" deep in top flange for 1 1/4" diameter pintles. Thread or press fit in bottom flange.

3/4" diameter x 12" Anchor bolts (ASTM F1554 Grade 36) with 2" x 2" x 5/16" washer under nut. 1 1/4" diameter Holes in bottom flange.

FIXED BEARING
(10 Required)

FIXED BEARING
(5 Required)



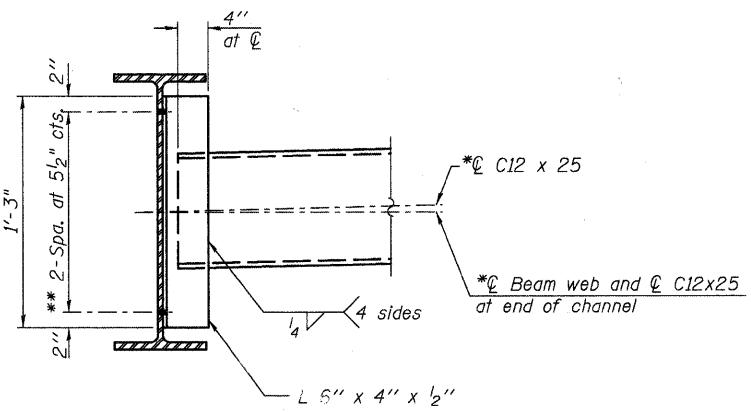
PINTLE

NOTES:
Anchor bolts shall be ASTM F1554 all-thread (or an Engineer-approved alternate material) of the grade(s) and diameter(s) specified. ASTM A307 Grade C anchor bolts may be used in lieu of ASTM F1554 Grade 36 (Fy=36ksi). The corresponding specified grade of AASHTO M314 anchor bolts may be used in lieu of ASTM F1554.

Anchor bolts at fixed bearings may be either cast in place or installed in holes drilled after the supported member is in place.

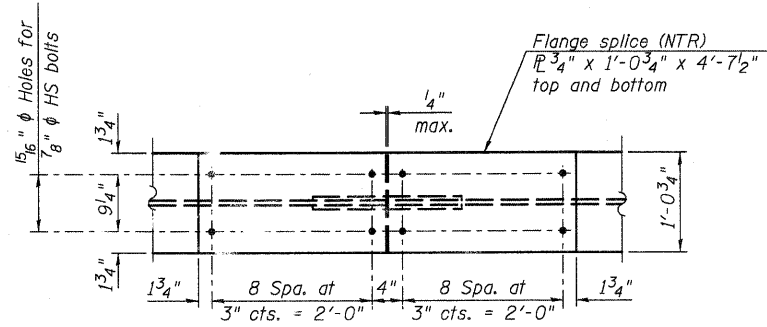
Drilled and set anchor bolts shall be installed according to Article 521.06 of the Standard Specifications.

Two 1/8 in. adjusting shims shall be provided for each bearing location in addition to all other plates or shims and placed as shown on bearing details.

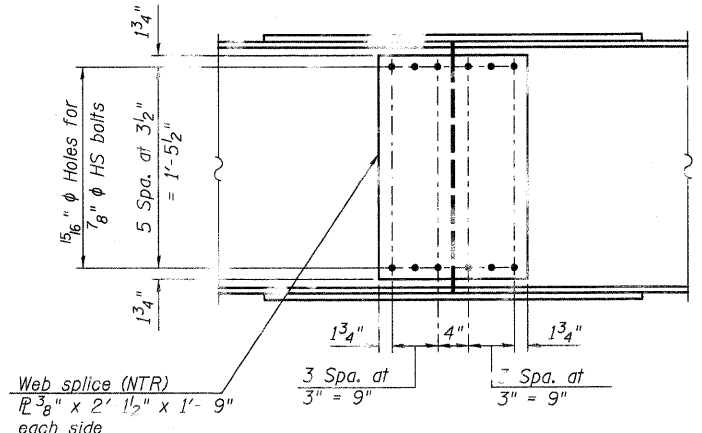


INTERIOR DIAPHRAGM
(28 Required)

Note:
Two hardened washers required for each set of oversized holes.
*C12x30 is permitted to facilitate material acquisition. Calculated weight of structural steel is based on the lighter section.
The alternate, if utilized, shall be provided at no additional cost to the Department.
**3/4" diameter HS bolts, 1 5/16" diameter holes



PLAN



ELEVATION

FIELD SPLICE DETAIL
(5 Required)

BILL OF MATERIAL

| Item | Unit | Total |
|------------------|------|-------|
| Anchor Bolts, 1" | Each | 30 |

STRUCTURAL STEEL DETAILS
STRUCTURE NO. 045-3020

| |
|----------------|
| DESIGNED - AEU |
| CHECKED - DLS |
| DRAWN - AWH |
| CHECKED - AEU |

WILLS BURKE KELSEY ASSOCIATES LTD.
116 West Main Street, Suite 201
St. Charles, Illinois 60174
(630) 443-7755

| | | | | | |
|-------------------------------|--------|----------------|----------|------------------|-----------|
| SHEET NO. 14 21 SHEETS | F.A.U. | SECTION | COUNTY | TOTAL SHEETS | SHEET NO. |
| | 2332 | 03-14185-02-BR | KANE | 73 | 38 |
| FED. ROAD DISY. NO. | | | ILLINOIS | FED. AID PROJECT | |
| CONTRACT NO. 63521 | | | | | |