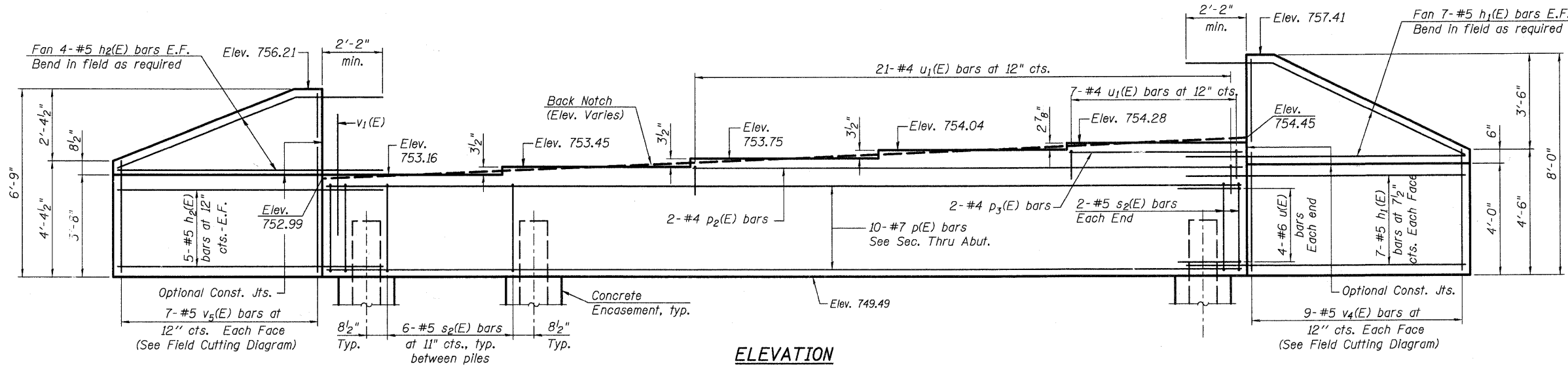
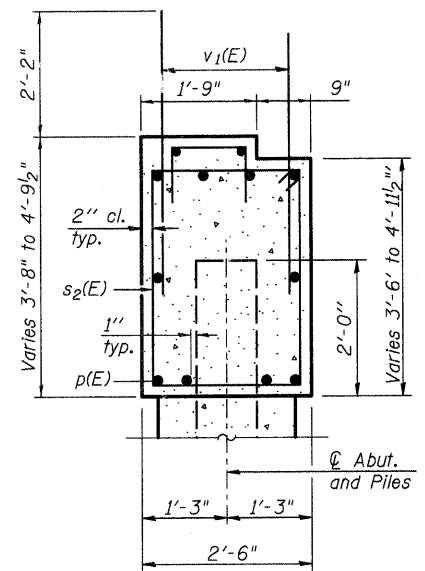


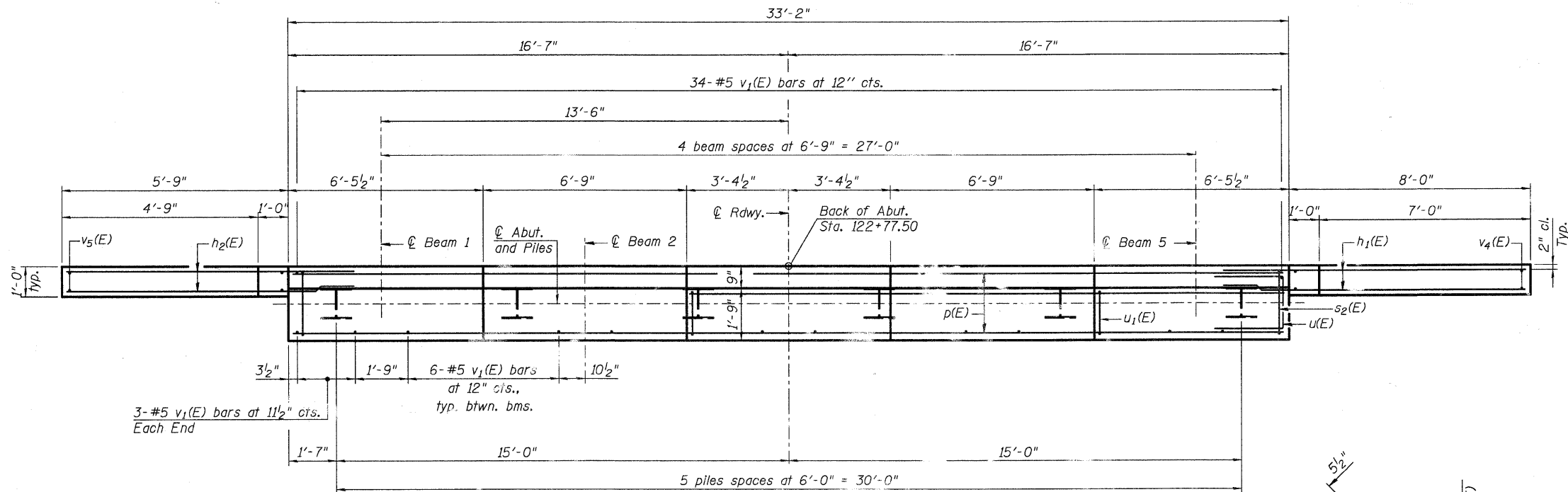
Notes:
Pour steps monolithically with cap.



ELEVATION



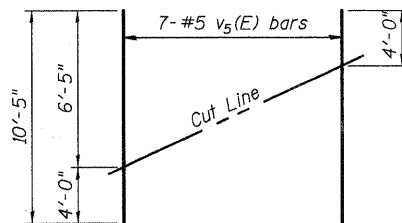
SEC. THRU ABUT.



PLAN

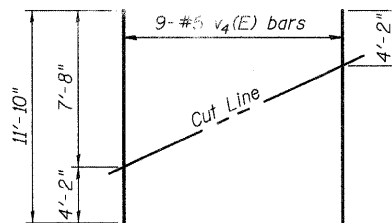
PILE DATA

Type: HP 12x53 w/ Pile Shoes
Nominal Required Bearing: 419 kips
Factored Resistance Available: 209 kips
Est. Length: 35'
No. Production Piles: 5
No. Test Piles: 1



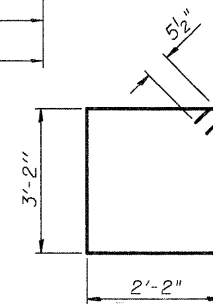
FIELD CUTTING DIAGRAM

Order v5(E) full length. Cut as shown and use remainder of bars in opposite face.

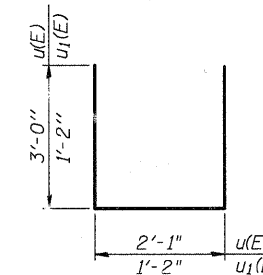


FIELD CUTTING DIAGRAM

Order v4(E) full length. Cut as shown and use remainder of bars in opposite face.



BAR s2(E)



BARS u(E) & u1(E)

BILL OF MATERIAL

Bar	No.	Size	Length	Shape
h1(E)	28	#5	10'-0"	—
h2(E)	18	#5	7'-9"	—
p(E)	10	#7	32'-10"	—
p2(E)	2	#4	19'-8"	—
p3(E)	2	#4	6'-2"	—
s2(E)	34	#5	11'-7"	□
u(E)	8	#6	8'-1"	—
u1(E)	28	#4	3'-6"	—
v1(E)	64	#5	4'-4"	—
v4(E)	9	#5	11'-10"	—
v5(E)	7	#5	10'-5"	—
Structure Excavation			Cu. Yd.	94
Concrete Structures			Cu. Yd.	15.9
Concrete Encasement			Cu. Yd.	2.1
Reinforcement Bars, Epoxy Coated			Pound	2,190
Furnishing Steel Piles, HP 12x53			Foot	175
Driving Piles			Foot	175
Test Pile Steel, HP 12x53			Each	1
Pile Shoes			Each	6

For details of piles and Concrete Encasement, see Sheet 18 of 21.

E.F. refers to each face.

**EAST ABUTMENT DETAILS
STRUCTURE NO. 045-3020**

DESIGNED - DLS
CHECKED - AEU
DRAWN - MLH
CHECKED - DLS

WILLS BURKE KELSEY ASSOCIATES LTD.
116 West Main Street, Suite 201
St. Charles, Illinois 60174
(630) 443-7755

SHEET NO. 16 21 SHEETS	F.A.U.	SECTION	COUNTY	TOTAL SHEETS	SHEET NO.
	2332	03-14185-02-BR	KANE	73	40
FED. ROAD DIST. NO.		ILLINOIS	FED. AID PROJECT		
CONTRACT NO. 63521					

FILE NAME = F:\CBBEL\WEST Projects\2004\09-0802 Bolcum PH11\Structure\09\0453020-03021-016-E.Abut.Detail.dgn

PLOT CREATION DATE = 10/19/2010