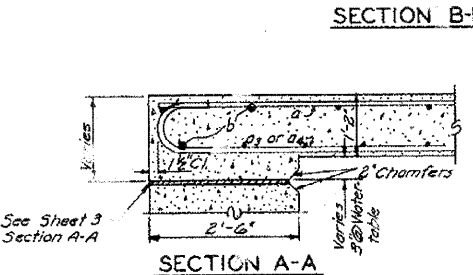
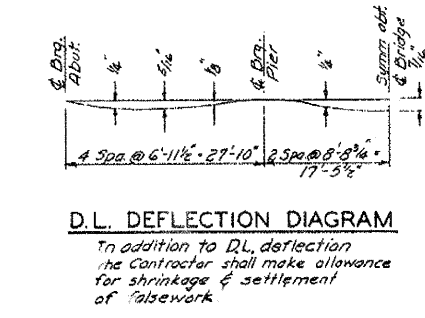
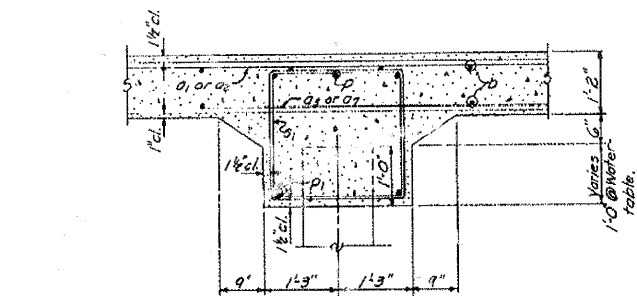
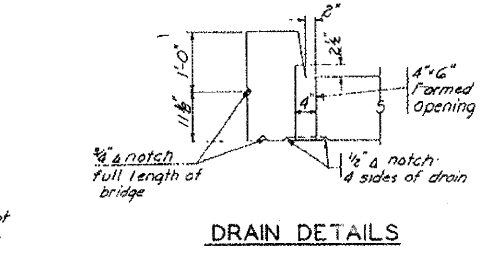
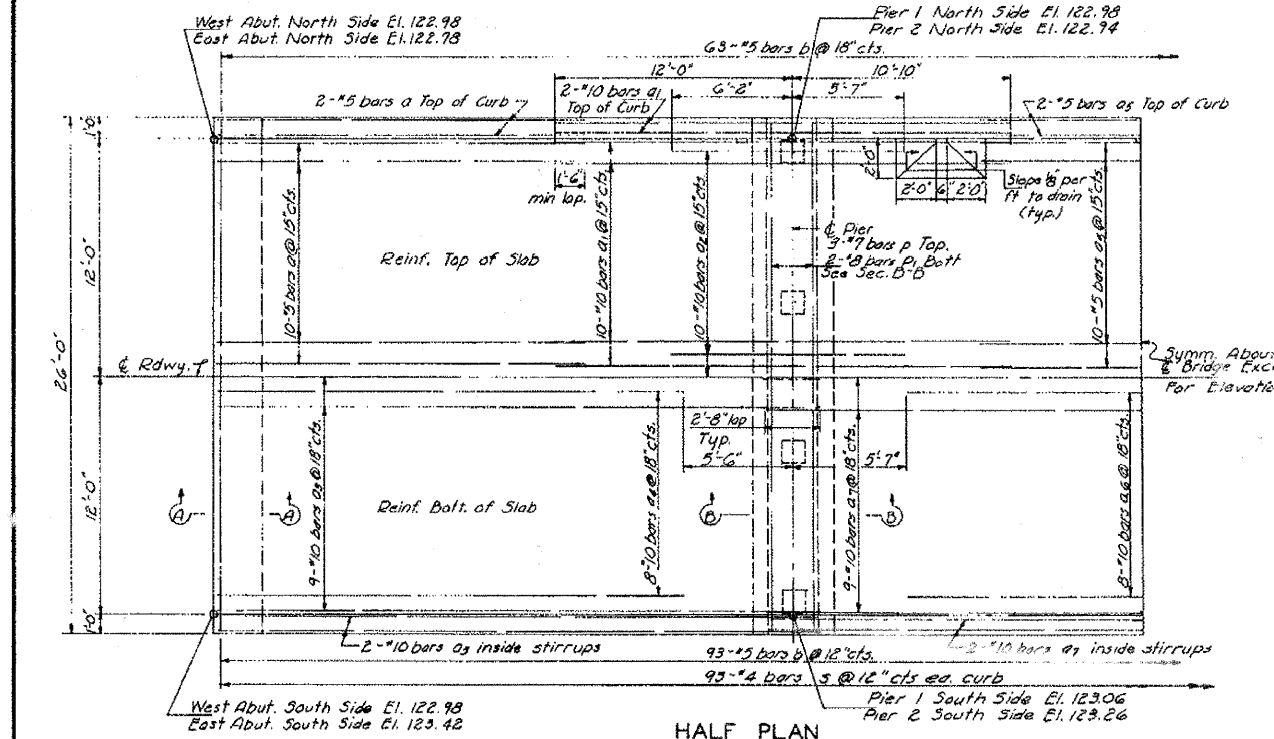
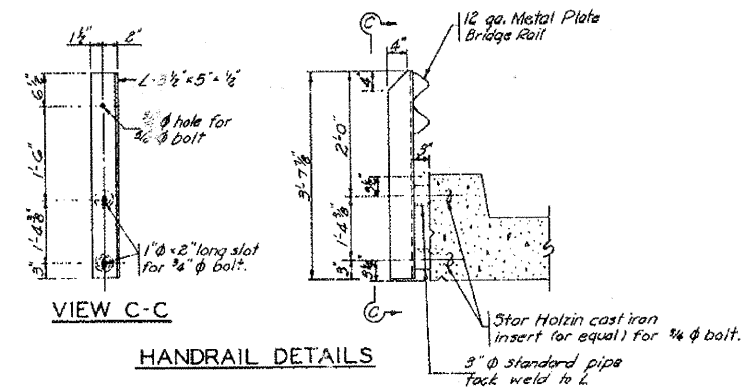
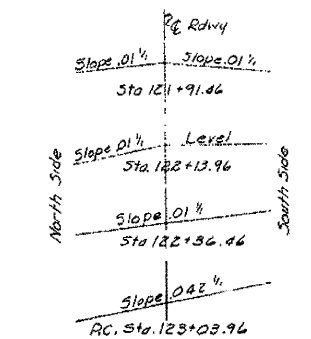
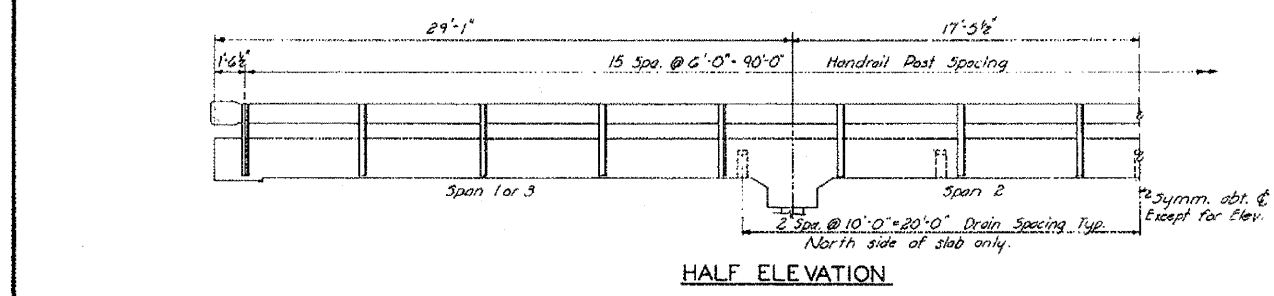
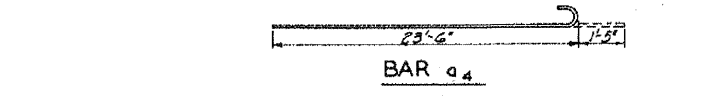
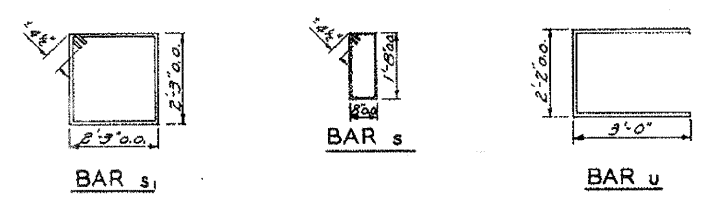
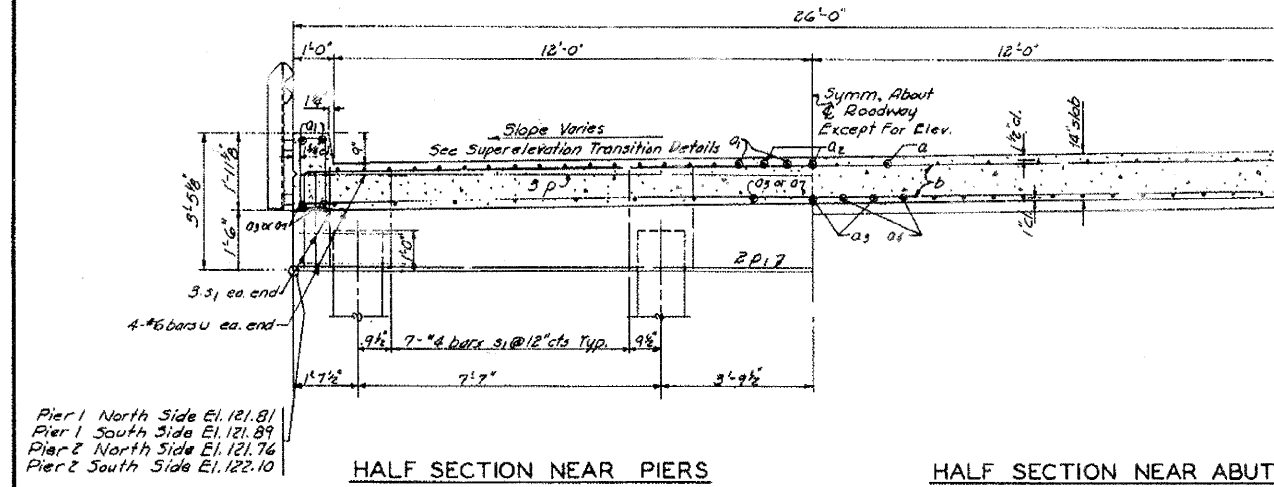


STATE AID FUNDING NO.	COUNTY	SECTION	TOTAL SHEETS	SHEET NO.
73	KANE	185B-MFT	7	6



BILL OF MATERIAL SUPERSTRUCTURE & PIERS

Bar	No	Size	Length	Shape
a	46	#5	18'-6"	—
a1	46	#10	22'-10"	—
a2	40	#10	11'-9"	—
a3	42	#10	30'-4"	—
a4	32	#10	24'-11"	—
a5	25	#5	16'-5"	—
a6	16	#10	25'-9"	—
a7	21	#10	37'-7"	—
b	156	#5	25'-8"	—
b1	6	#7	25'-8"	—
b2	4	#8	25'-8"	—
c	186	#4	5'-5"	□
c1	54	#4	9'-9"	□
d	16	#6	8'-8"	□
Class X Concrete				Cu Yds 119.2
Reinforcement Bars				Lbs 27,750
Metal Plate Bridge Rail Lin.Pt.				180
Precast Concrete Piles Lin.Pt.				175
Test Piles (Concrete)				1



PILE DATA
 Type 14" Precast Concrete
 No. 8"
 Capacity 34 Ton
 Est. Length 25'
 (See sheet 3 for details of the conc. piles)
 Includes one test pile

SLAB CORYN BRIDGE
 SEC. 185 B-MFT
 STA. 122+25.00
 S.A. ROUTE 73
 KANE COUNTY
 HANSON, COLLINS & RICE
 CONSULTING ENGINEERS

DESIGNED V.F.S. CHECKED P.A.C.
 DRAWN A.C.C. DATE 2-24-59 NO. D-58-64

FILE NAME = P:\CBBEL WEST Projects\2009\09-0862 Bolcum PH11.G.v1\09n\SHA\EXSTRUC2.dgn

WILLS BURKE KELSEY ASSOCIATES LTD.
 116 West Main Street, Suite 201
 St. Charles, Illinois 60174

USER NAME = #USER#	DESIGNED -	REVISED -
PLOT SCALE =	DRAWN -	REVISED -
PLOT DATE = 10/21/2010	CHECKED -	REVISED -
	DATE = 10/22/10	REVISED -

STATE OF ILLINOIS
DEPARTMENT OF TRANSPORTATION

EXISTING STRUCTURE PLANS FOR REFERENCE ONLY

SCALE: SHEET NO. 47 OF 73 SHEETS STA. TO STA.

F.A. RTE.	SECTION	COUNTY	TOTAL SHEETS	SHEET NO.
2332	03-14185-02-BR	KANE	73	47
CONTRACT NO. 63521				
FED. ROAD DIST. NO. 1 (ILLINOIS) FED. AID PROJECT				

FOR REFERENCE ONLY