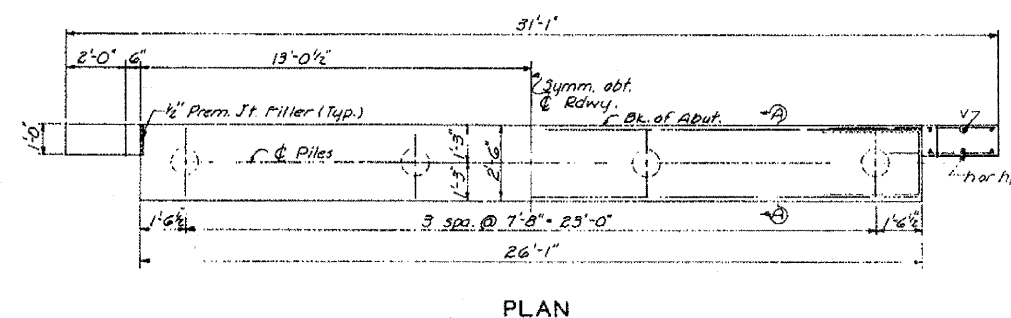
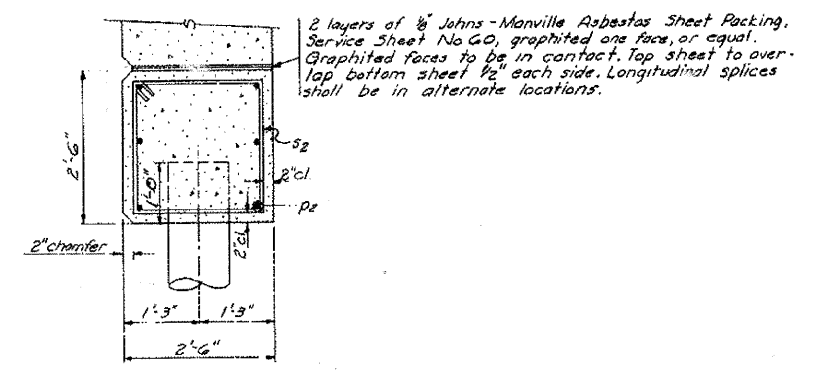


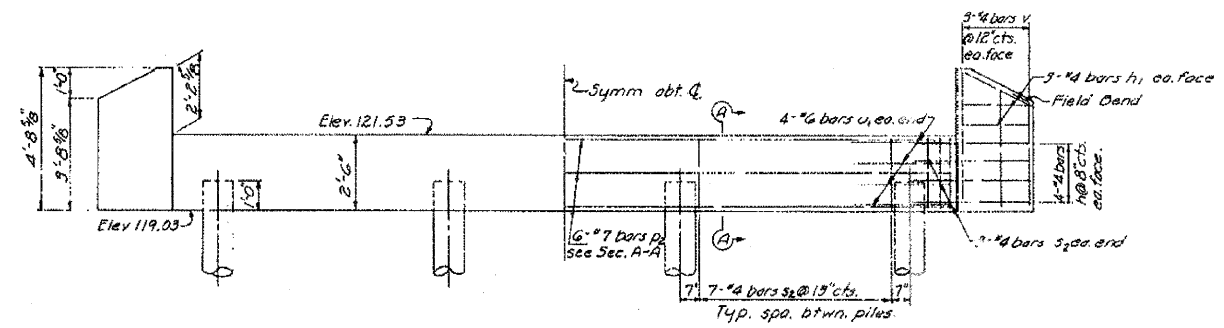
STATE AID DISTRICT NO.	COUNTY	SECTION	TOTAL SHEETS	SHEET NO.
73	KANE	03B-MFT	7	7



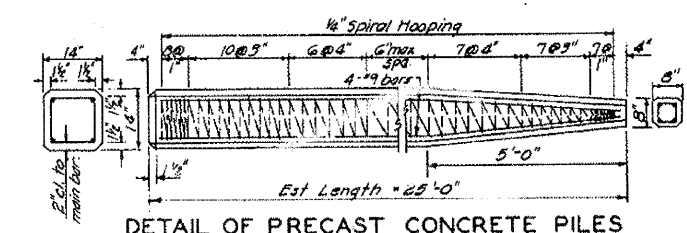
PLAN



SECTION A-A

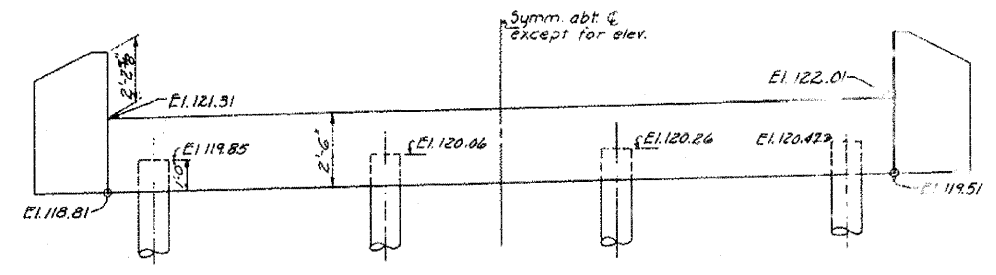


ELEVATION WEST ABUTMENT

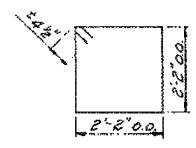


DETAIL OF PRECAST CONCRETE PILES

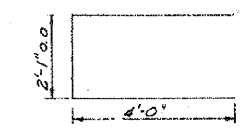
Note to Contractor:
 For pile lengths up to 45' use two slings placed at a distance of 0.21L from each end. On piles larger than 45' use three slings placed at 0.12L from each end and at mid-point of pile.



ELEVATION EAST ABUTMENT



BAR s2



BAR u1

BILL OF MATERIAL-ABUTMENTS

Bar	No	Size	Length	Shape
n	32	#4	3'-9"	—
p1	24	#4	8'-9"	—
p2	12	#7	25'-9"	—
s2	56	#4	9'-5"	□
u1	16	#6	10'-1"	□
v	24	#4	4'-0"	—
Class X Concrete		Cu Yds	13.7	
Reinforcement Bars		Lbs.	1390	
Crested Piles		Lin. Ft.	160	
Test Piles		Eq.	1	

PILE DATA

Type	Crested
No. Req'd	8
Min Capacity	19 Ton
Est. Length	20'

ABUTMENTS
 CORYN BRIDGE
 SEC. 185 B-MFT
 STA. 122+25.00
 S.A. ROUTE 73
 KANE COUNTY

HANSON, COLLINS & RICE
 CONSULTING ENGINEERS

DESIGNED V.F.S. CHECKED R.O.C.
 DRAWN A.F.E. DATE 2-24-59 NO. B-58-44

FOR REFERENCE ONLY

FILE NAME = P:\CBBEL WEST Projects\2008\99-0082 Bolcum PH11\G1\1\0gr\Nht\EXSTR03.dgn

WBK WILLS BURKE KELSEY ASSOCIATES LTD.
 116 West Main Street, Suite 201
 St. Charles, Illinois 60174

USER NAME = #USER#	DESIGNED -	REVISED -
PLOT SCALE =	DRAWN -	REVISED -
PLOT DATE = 10/21/2010	CHECKED -	REVISED -
	DATE - 10/22/10	REVISED -

STATE OF ILLINOIS
 DEPARTMENT OF TRANSPORTATION

EXISTING STRUCTURE PLANS
 FOR REFERENCE ONLY

SCALE:	SHEET NO. 48 OF 73 SHEETS	STA.	TO STA.	F.A. RTE.	SECTION	COUNTY	TOTAL SHEETS	SHEET NO.
				2332	03-14185-02-BR	KANE	73	48
				CONTRACT NO. 63521				
				FED. ROAD DIST. NO. 1 ILLINOIS FED. AID PROJECT				