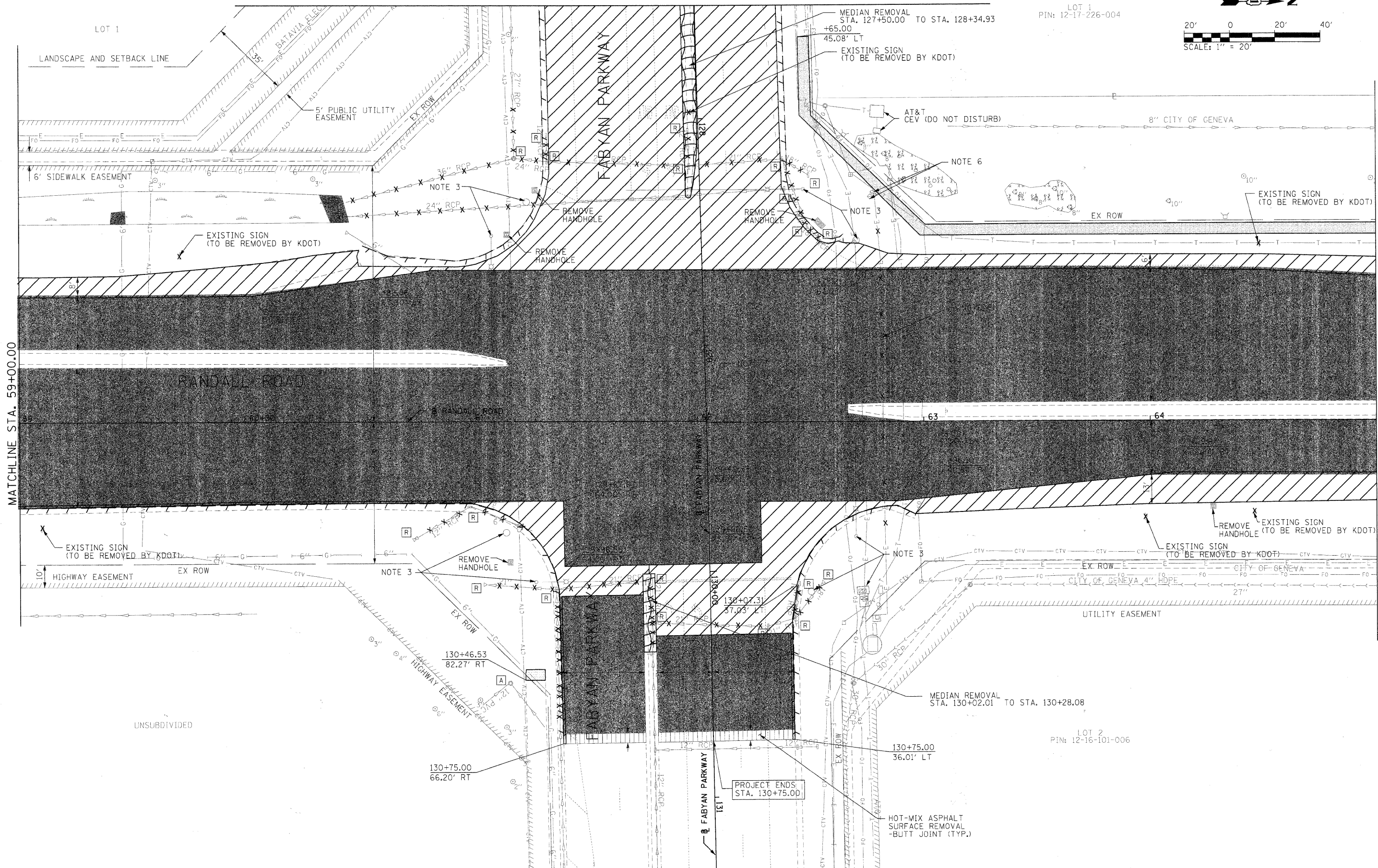
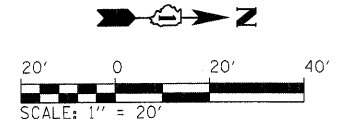


SEE SHEET NO. 20
MATCHLINE STA. 127+50.00

LOT 1
PIN: 12-17-226-004



MATCHLINE STA. 59+00.00

MATCHLINE STA. 65+00.00

FILE NAME = L:\V\1100\0929083\Draw\Exhibits\SubEasement\CADD_Sheets\B_REV_03.dgn

CMT
CRAWFORD, MURPHY & TILLY, INC.
CONSULTING ENGINEERS
License No. 184-000618

USER NAME = Matt Baldwin	DESIGNED - PWK	REVISED -
PLOT SCALE = 20.0000' / IN.	DRAWN - ERD	REVISED -
PLOT DATE = 2/7/2011	CHECKED - KDF	REVISED -
	DATE - 12/29/2010	REVISED -

**STATE OF ILLINOIS
DEPARTMENT OF TRANSPORTATION**

**RANDALL ROAD
ROADWAY REMOVAL PLAN**

SCALE: 1"=20' SHEET NO. 3 OF 6 SHEETS STA. 59+00.48 TO STA. 65+00.01

F.A.P. RTE.	SECTION	COUNTY	TOTAL SHEETS	SHEET NO.
336	01-00269-00-CH	KANE	124	17
CONTRACT NO. 63533				
ILLINOIS FED. AID PROJECT				