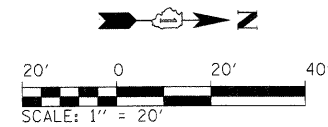
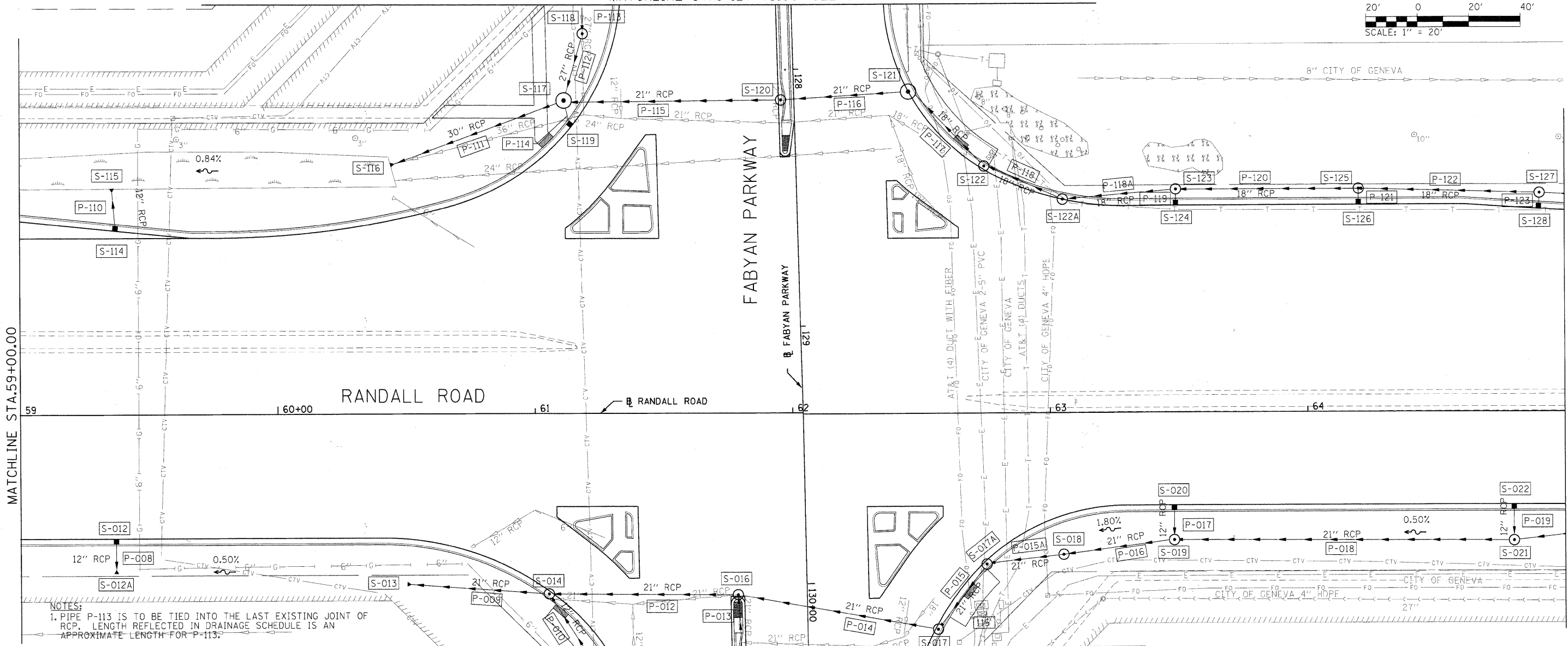


MATCHLINE STA. 127+75.00 (SEE SHEET NO. 49)



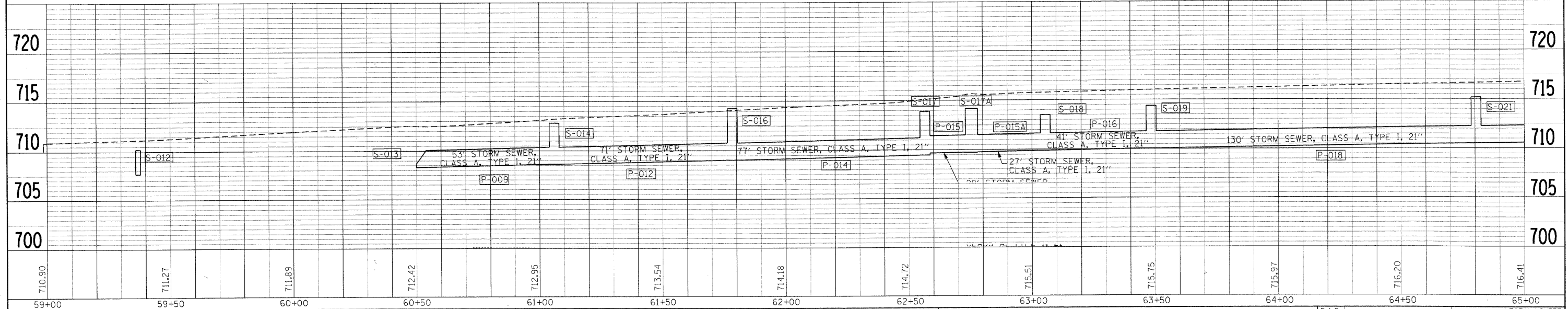
PLAN	SURVEYED	DATE
	ALIGNED	
	NOTED	
	BY	
	DATE	

PROFILE	SURVEYED	DATE
	PLOTTED	
	NOTED	
	BY	
	DATE	



NOTES:
 1. PIPE P-113 IS TO BE TIED INTO THE LAST EXISTING JOINT OF RCP. LENGTH REFLECTED IN DRAINAGE SCHEDULE IS AN APPROXIMATE LENGTH FOR P-113.

MATCHLINE STA. 130+25.00 (SEE SHEET NO. 49)



FILE NAME: L:\NCECO\9292803\Drawn\shhs\us\NCE\document\4000_Sheets\PLR_03.dwg
 CMT CRAWFORD, MURPHY & TILLY, INC. CONSULTING ENGINEERS License No. 184-000619

USER NAME = Matt Baldwin	DESIGNED - PWK	REVISED -
PLOT SCALE = 20.0000' / IN.	DRAWN - ERD	REVISED -
PLOT DATE = 2/7/2011	CHECKED - KDF	REVISED -
	DATE = 12/29/2010	REVISED -

STATE OF ILLINOIS
 DEPARTMENT OF TRANSPORTATION

DRAINAGE AND UTILITY PLAN
 SCALE: 20'H 5'V SHEET NO. 3 OF 6 SHEETS STA. 59+00.00 TO STA. 65+00.00

F.A.P. RTE.	SECTION	COUNTY	TOTAL SHEETS	SHEET NO.
336	01-00269-00-CH	KANE	124	46
CONTRACT NO. 63533				
ILLINOIS FED. AID PROJECT				