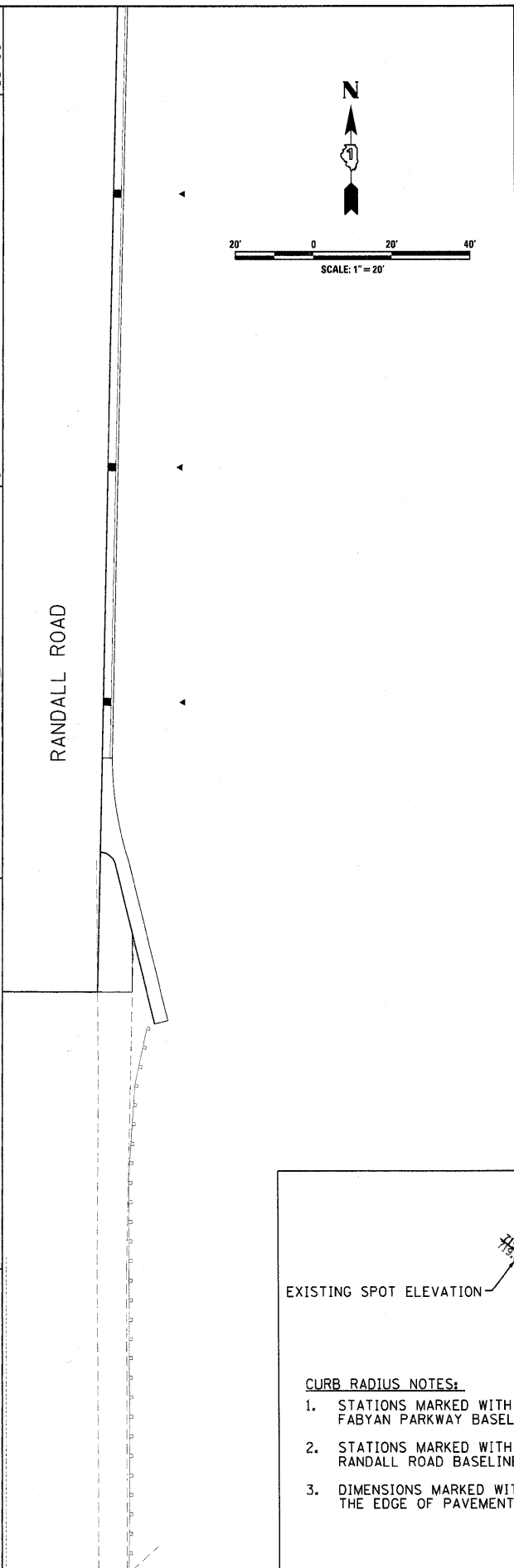
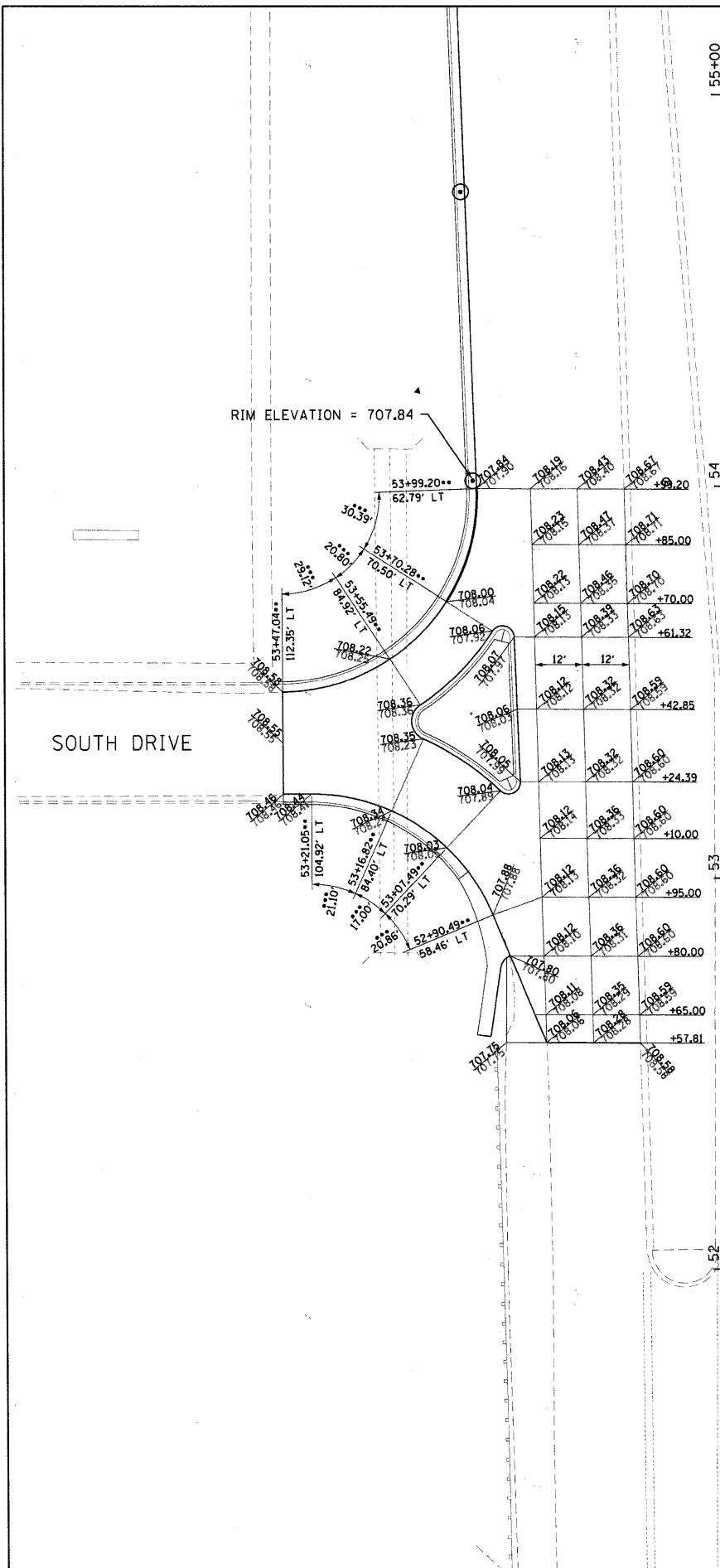


POINT	STATION	OFFSET	ELEVATION
1	68+85	76.4' LT	715.86
2	68+59	75.0' LT	716.24
3	68+39	75.0' LT	716.20
4	68+22	76.4' LT	715.77



PROPOSED SPOT ELEVATION

EXISTING SPOT ELEVATION

**CURB RADIUS NOTES:**

1. STATIONS MARKED WITH A "•" ARE MEASURED FROM THE FABYAN PARKWAY BASELINE.
2. STATIONS MARKED WITH A "•••" ARE MEASURED FROM THE RANDALL ROAD BASELINE.
3. DIMENSIONS MARKED WITH A "••••" ARE MEASURED ALONG THE EDGE OF PAVEMENT OF THE INTERSECTION RADII.

FILE NAME = L:\V\NECO\0226603\02-av\Exhibits\VicAssessment\CADD\Sheet\RP\_L02.dgn

**CMT**  
CRAWFORD, MURPHY & TILLY, INC.  
CONSULTING ENGINEERS  
License No. 184-000913

USER NAME = Matt Baldwin	DESIGNED - PWK	REVISED -
PLOT SCALE = 20,000 1/4 IN.	DRAWN - ERD	REVISED -
PLOT DATE = 2/7/2011	CHECKED - KDF	REVISED -
	DATE - 12/29/2010	REVISED -

**STATE OF ILLINOIS  
DEPARTMENT OF TRANSPORTATION**

**INTERSECTION GRADING PLAN  
RANDALL ROAD & FABYAN PARKWAY**

SCALE: 1" = 20' SHEET NO. 2 OF 2 SHEETS STA. TO STA.

F.A.P. RTE. 336	SECTION 01-00269-00-CH	COUNTY KANE	TOTAL SHEETS 124	SHEET NO. 62
CONTRACT NO. 63533				
ILLINOIS FED. AID PROJECT				