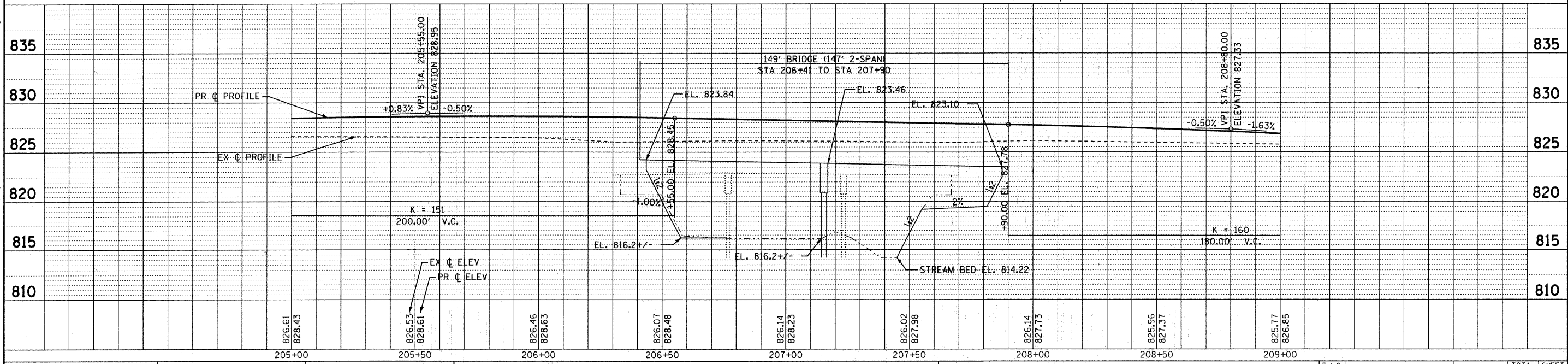


HOT-MIX ASPHALT RECONSTRUCTION
 AGGREGATE SUBGRADE 12"
 HMA BINDER COURSE, IL-19.0 N50, 8"
 HMA SURFACE COURSE, MIX "C", N50, 2"

- NOTES:**
1. ALL DIMENSIONS ARE TO THE EDGE OF PAVEMENT UNLESS OTHERWISE NOTED.
 2. FOR THE PROPOSED RIGHT-OF-WAY LIMITS SEE RIGHT-OF-WAY PLANS.
 3. F/G = FACE OF GUARDRAIL



COPYRIGHT © 2010 BY BAXTER & WOODMAN, INC.
 STATE OF ILLINOIS - PROFESSIONAL DESIGN FIRM
 LICENSE NO. 184-0021 - EXPIRES 6/30/2011
 12/2/2010
 \\sps01\projects\070630-02\Drawings\070630-02-02-01-01-01-01.dwg
 Union_Bridges\CADD\SURVEY\DRAWINGS\070630-02-02-01-01-01-01.dwg

	DESIGNED - CAC	REVISED - PER IDOT 10-08-10	MCHENRY COUNTY DIVISION OF TRANSPORTATION UNION ROAD BRIDGE OVER SOUTH BRANCH OF KISHWAUKEE RIVER	PLAN AND PROFILE	F.A.S. SECTION	COUNTY	TOTAL SHEETS	SHEET NO.	
	DRAWN - BCD	REVISED -			0034	06-00320-02-BR	MCHENRY	65	15
	CHECKED - MDW	REVISED -			CONTRACT NO. 63536				
	DATE - 08/20/10	FILE - 070630-PH2-UNION-PP2.shp			SCALE: H: 1"=20' V: 1"=5'		STA. 205+00 TO STA. 209+00		JOB NO. C-91-140-11 ILLINOIS FED. AID PROJECT BR5-0034(107)