

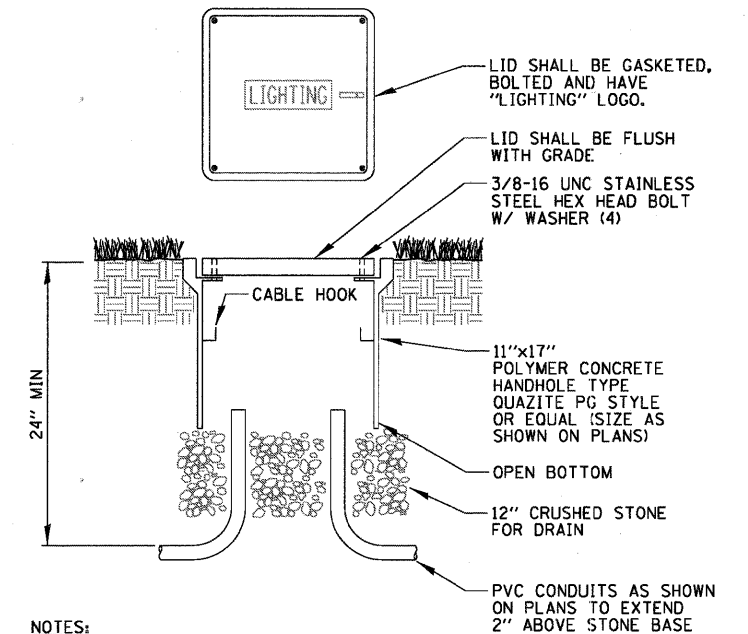
ITEM	SPECIFICATION	MANUFACTURER/MODEL NO. OR EQUAL
① MAIN CIRCUIT BREAKER	100 AMPERE, 2P, 240V SERVICE RATING, 10KAIC	SQUARE D. FAL 22100
② LAMPHOLDER CIRCUIT BREAKER	20 AMPERE, 1P, 120V RATING, 10KAIC	SQUARE D. FAL 12020
③ PHOTOELECTRIC CONTROL CIRCUIT BREAKER	15 AMPERE, 1P, 120V RATING, 10KAIC	SQUARE D. FAL 12015
④ AUXILIARY RELAY	120 V OPERATED DPDT 60 HZ COIL 2 NO & 2 NC CONTACTS	MAGNECRAFT NO. 389 FXBXC1 - 120A
⑤ CABINET RECEPTACLE AND BOX	COMMERCIAL GRADE GFCI 20A/120V, MOUNTED IN A WEATHERPROOF CAST ALUMINUM SINGLE GANG BOX WITH WEATHERPROOF COVER	RECEPTACLE: LEVITON NO. 8899, BOX: APPLETON NO. WSM150 COVER: APPLETON NO. WHG1
⑥ CABINET LIGHT AND BOX	120V WEATHERPROOF LAMPHOLDER MOUNTED IN A CAST ALUMINUM BOX & EXT. GRADE 100W LAMP	LIGHT & BOX: RAB NO. VX100DG
⑦ CONTACTOR	100 AMPERE, 2 POLE, 120 V COIL, MECH HELD	SQUARE D NO. 8903 S00 10 V02
⑧ BRANCH LINE CIRCUIT BREAKERS	3 - 20 AMPERE, 2P, 240V RATING, 10KAIC	SQUARE D. FAL 22020
⑨ POWER DISTRIBUTION BLOCK	600 VOLT, INSULATED, SIZE AS REQUIRED	MARATHON
⑩ SERVICE CABLES	3-600V (XLP-TYPE USE) NO. 2	N/A
⑪ LAMPHOLDER WIRE	2-600V XLP NO. 12	N/A
⑫ CONTROL WIRE	2-600V XLP NO. 12	N/A
⑬ SURGE ARRESTOR	10 K AMPERE RATING	SQUARE D NO. SDSA 1175
⑭ PHOTOELECTRIC CONTROL WIRE	3-600V XLP NO. 12	N/A
⑮ DOOR SWITCH	20A/120V, DOOR MOUNTED SNAP ACTION TYPE PLUNGER SWITCH	OMRON NO. A-20GQ-K
⑯ HAND-AUTO-OFF CONTROL SWITCH	20 A, 3 POS. MTD IN CAST ALUM. ENCLOSURE	SQUARE D NO. 9001 KYK 111
⑰ PHOTOCCELL	120V, MTD. ON CABINET, DELAY TYPE, SPST-NC	FISHER PIERCE NO. FPFA-105
⑱ BACK BOARD	1/2" THICK EQUIPMENT MOUNTING PANEL	ARBORON

### EXISTING LIGHTING CONTROLLER COMPONENT SCHEDULE

CIRCUIT ID	50 W LUMINAIRES	70 W FLOOD LIGHTS	70 W BOLLARDS	LOAD/LUMINAIRE (WATTS)	TOTAL CIRCUIT LOAD (WATTS)
A	6	-	-	96 W	576 W
B	6	-	-	96 W	576 W
C	-	2	12	95 W	1,330 W
TOTAL	12	2	12	-	2,482 W

### PROPOSED CIRCUIT LOADS FOR EXISTING LIGHTING CONTROLLER

EXISTING CONDITIONS SHOWN HALFTONED  
PROPOSED CONDITIONS SHOWN BOLD

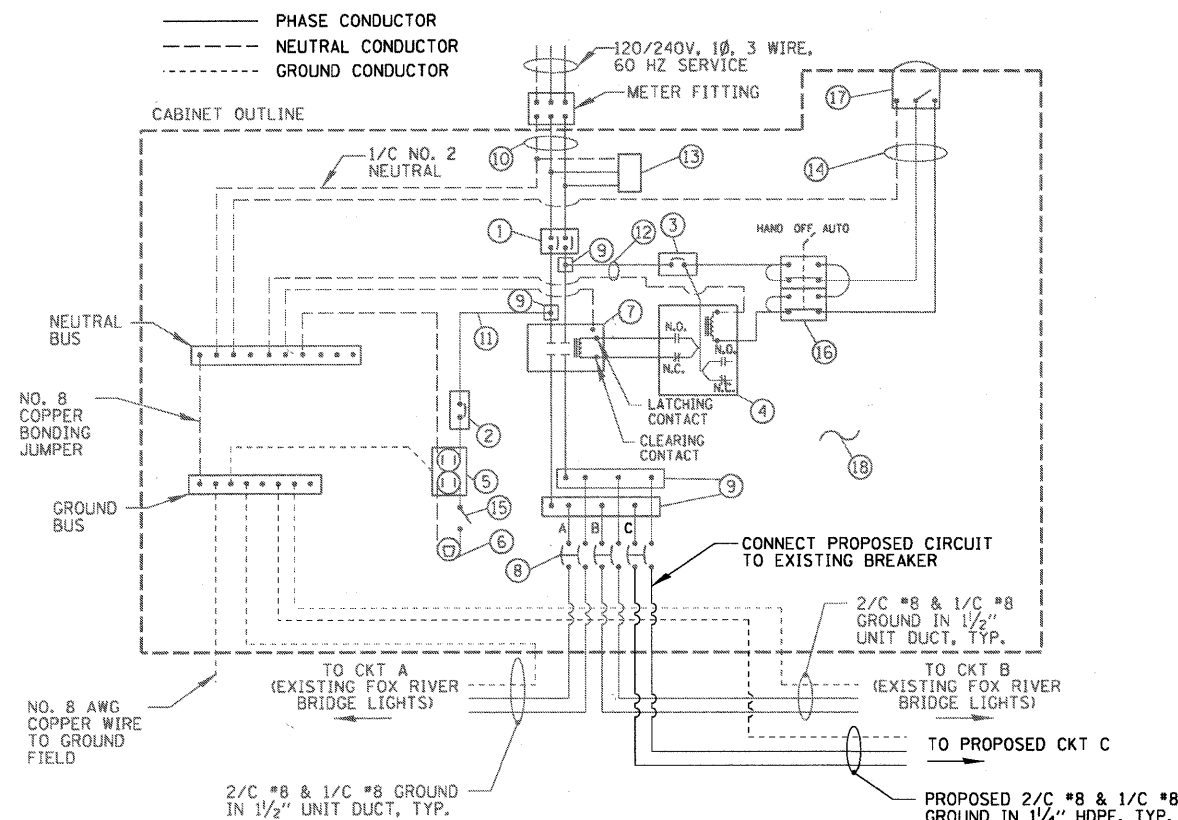


NOTES:

- SPLICES SHALL BE WATERPROOF.
- POLYMER CONCRETE HANDHOLE AND LID SHALL BE GREEN IN LANDSCAPED AREAS AND MATCH COLOR IN CONCRETE/BRICK AREAS.

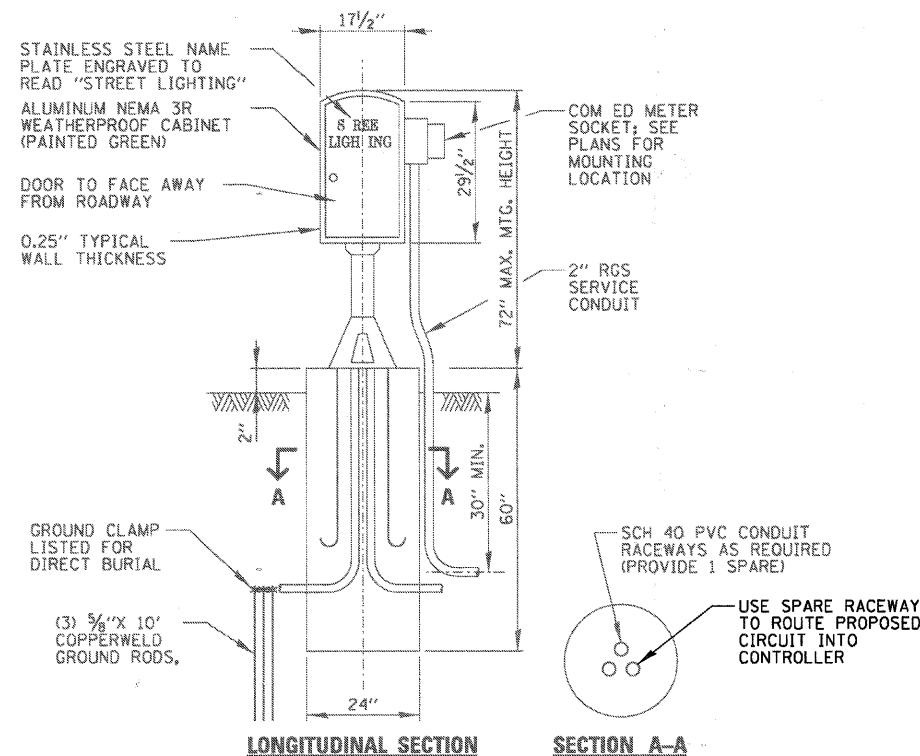
### POLYMER CONCRETE HANDHOLE

N.T.S.



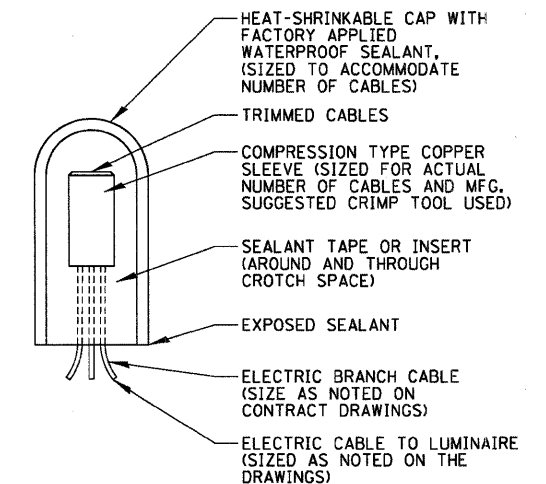
### EXISTING LIGHTING CONTROLLER WIRING DETAIL

N.T.S.



### EXISTING LIGHTING CONTROLLER CABINET AND FOUNDATION

N.T.S.



### SPlicing ELECTRIC CABLE

N.T.S.

FILE NAME = P:\CBBEL WEST Projects\2009\09-002\CADD\CAD\WV\LDgn\Shht\SELECT-3.dgn



USER NAME = *USER*	DESIGNED - KWB	REVISED -
PLOT SCALE =	DRAWN - AJD	REVISED -
PLOT DATE = 12/17/2010	CHECKED -	REVISED -
	DATE - 12/17/10	REVISED -

STATE OF ILLINOIS  
DEPARTMENT OF TRANSPORTATION

STEARNS ROAD /RTE 31 BRIDGE  
LIGHTING DETAILS (1 OF 2)

SCALE: SHEET NO. 77 OF 80 SHEETS STA. TO STA.

F.A.P. RTE.	SECTION	COUNTY	TOTAL SHEETS	SHEET NO.
361	09-00214-02-LS	KANE/DUPAGE	80	77
CONTRACT NO. 63542				
FED. ROAD DIST. NO. 1 ILLINOIS FED. AID PROJECT				