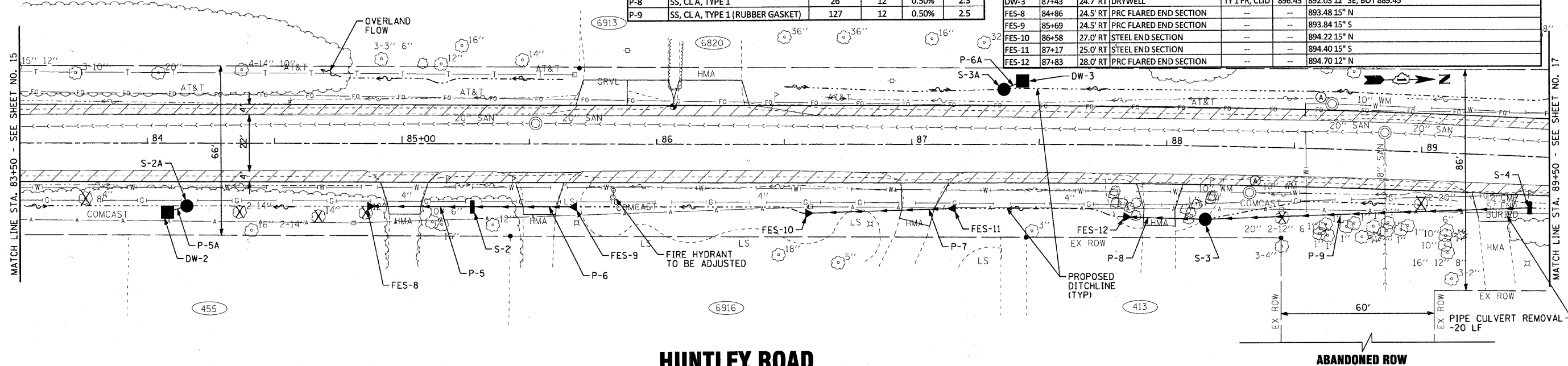
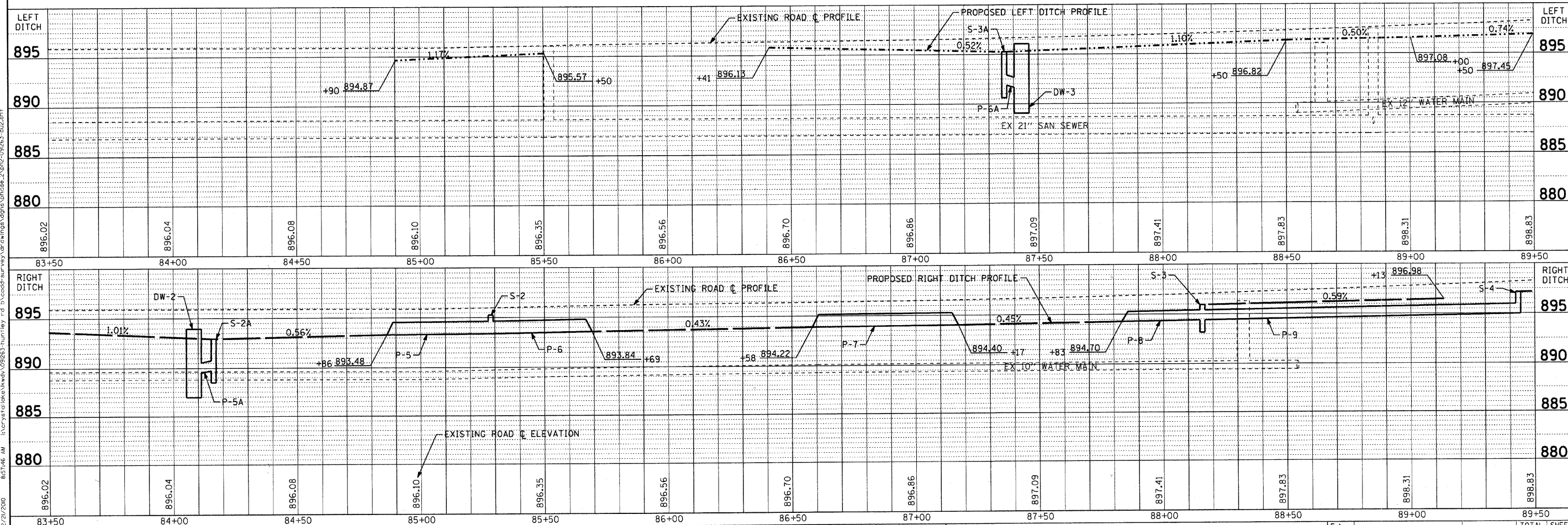


STORM PIPES					
NO.	TYPE	LENGTH (LF)	DIA (IN)	SLOPE	TBF (CY)
P-5	SS, CLA, TYPE 1	36	15	0.50%	2.3
P-5A	SS, CLA, TYPE 1	11	12	2.00%	0.0
P-6	SS, CLA, TYPE 1	36	15	0.37%	2.3
P-6A	SS, CLA, TYPE 1	11	12	2.00%	0.0
P-7	PIPE CULV, CL D, TYPE 1	59	15	0.30%	2.3
P-8	SS, CLA, TYPE 1	26	12	0.50%	2.3
P-9	SS, CLA, TYPE 1 (RUBBER GASKET)	127	12	0.50%	2.5

STORM STRUCTURES						
NO.	STATION	OFFSET	TYPE	FRAME	RIM/EP	INVERTS
S-2	85+28	24.6' RT	INLET, TYPE A	SPL FR, OLID	895.50	893.69 15" N & S
S-2A	84+16	24.5' RT	CATCH BASIN, TYPE C	TY 1 FR, OLID	893.09	889.90 12" SE
S-3	88+16	28.5' RT	CATCH BASIN, TYPE C	SPL FR, OLID	896.40	894.86 12" N & S
S-3A	87+36	21.4' LT	CATCH BASIN, TYPE C	TY 1 FR, OLID	895.64	892.25 12" NW
S-4	89+43	20.0' RT	INLET, TYPE A	TY 1 FR, OLID	897.68	895.50 12" S
DW-2	84+08	26.9' RT	DRYWELL	TY 1 FR, CLID	894.10	889.68 12" NW, BOT 887.10
DW-3	87+43	24.7' RT	DRYWELL	TY 1 FR, CLID	896.45	892.03 12" SE, BOT 889.45
FES-8	84+86	24.5' RT	PRC FLARED END SECTION	--	--	893.48 15" N
FES-9	85+69	24.5' RT	PRC FLARED END SECTION	--	--	893.84 15" S
FES-10	86+58	27.0' RT	STEEL END SECTION	--	--	894.22 15" N
FES-11	87+17	25.0' RT	STEEL END SECTION	--	--	894.40 15" S
FES-12	87+83	28.0' RT	PRC FLARED END SECTION	--	--	894.70 12" N



### HUNTLEY ROAD



COPYRIGHT © 2010 BY BAXTER & WOODMAN, INC.  
 STATE OF ILLINOIS PROFESSIONAL ENGINEERING REGISTRATION BOARD  
 LICENSE NO. 001-091263-001  
 PROJECT NO. 10-00011-00-BT  
 CONTRACT NO. 63545  
 DATE 12/16/10



DESIGNED - DSH	REVISOR - 12/16/10 PER IDOT
DRAWN - MAC	REVISOR -
CHECKED - JUF	REVISOR -
DATE - 12/16/10	FILE - ph2-091263-du2.sht

### VILLAGE OF LAKEWOOD, ILLINOIS HUNTLEY ROAD BICYCLE TRAIL

**DRAINAGE & UTILITY  
HUNTLEY ROAD**

SCALE: H: 1"=20' V: 1"=5'

STA. 83+50 TO STA. 89+50

F.A. RTE. 0118	SECTION 10-00011-00-BT	COUNTY MCHENRY	TOTAL SHEETS 35	SHEET NO. 16
FED. ROAD DIST. NO. 1 ILLINOIS FED. AID PROJECT CMM-900316281			CONTRACT NO. 63545	