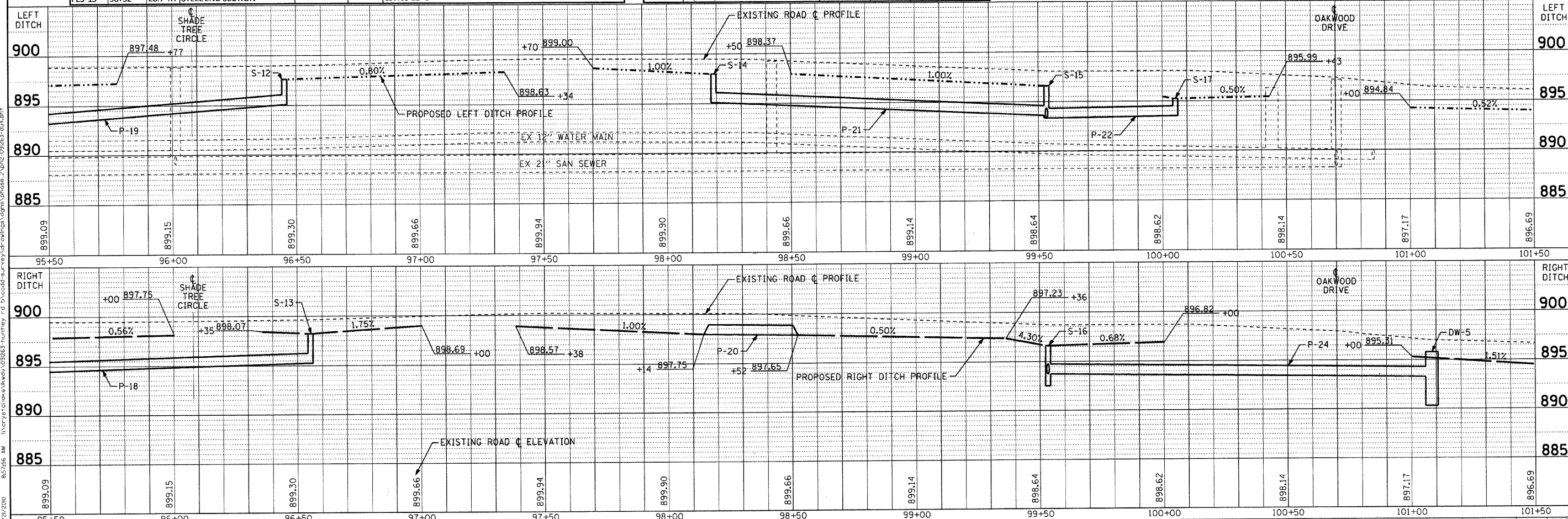


STORM STRUCTURES					
NO.	STATION	OFFSET	TYPE	FRAME	RIM/EP INVERTS
S-12	96+46	21.5' LT	INLET, TYPE A	TY 1 FR, OLID	897.92 895.36 12" S
S-13	96+55	19.2' RT	INLET, TYPE A	TY 1 FR, OLID	897.90 894.93 12" S
S-14	98+10	21.9' LT	INLET, TYPE A	TY 1 FR, OLID	898.40 895.52 12" N
S-15	99+53	20.2' LT	INLET, TYPE A	TY 1 FR, OLID	897.10 894.10 12" S, 893.83 12" N & E
S-16	99+53	22.9' RT	CATCH BASIN, TYPE C	TY 1 FR, OLID	896.50 893.64 12" W & N
S-17	100+05	24.0' LT	INLET, TYPE A	SPL FR, OLID	895.80 894.05 12" S
DW-5	101+08	22.2' RT	DRYWELL	TY 1 FR, CLID	895.80 893.30 12" S, BOT 890.30
FES-14	98+14	20.8' RT	STEEL END SECTION	--	897.75 12" N
FES-15	98+52	20.7' RT	STEEL END SECTION	--	897.65 12" S

STORM PIPES					
NO.	TYPE	LENGTH (LF)	DIA (IN)	SLOPE	TBF (CY)
P-18	SS, CL A, TYPE 1 (RUBBER GASKET)	116	12	0.80%	6.0
P-19	SS (WATER MAIN REQ.)	107	12	2.00%	16.5
P-20	PIPE CULV, CL D, TYPE 1	38	12	0.25%	1.0
P-21	SS (WATER MAIN REQ.)	142	12	1.00%	5.8
P-22	SS (WATER MAIN REQ.)	51	12	0.44%	5.1
P-23	SS, CL A, TYPE 1 (RUBBER GASKET)	43	12	0.44%	8.5
P-24	SS, CL A, TYPE 1	153	12	0.22%	15.6



COPYRIGHT © 2002 BY BAXTER & WOODMAN, INC.
 STATE OF ILLINOIS PROFESSIONAL DESIGN FIRM
 187 N. WASHINGTON ST., SUITE 200, CHICAGO, IL 60601
 (312) 467-2300 FAX (312) 467-2301
 www.baxterwoodman.com



DESIGNED - DSH	REVISED - 12/16/10 PER IDOT
DRAWN - MAC	REVISED -
CHECKED - JJF	REVISED -
DATE - 12/16/10	FILE - ph2-091263-du4.sht

VILLAGE OF LAKEWOOD, ILLINOIS
HUNTLEY ROAD
BICYCLE TRAIL

SCALE: H: 1"=20' V: 1"=5'

DRAINAGE & UTILITY
HUNTLEY ROAD

STA. 95+50 TO STA. 101+50

F.A. RTE. 0118	SECTION 10-00011-00-BT	COUNTY MCHENRY	TOTAL SHEETS 35	SHEET NO. 18
FED. ROAD DIST. NO. 1 ILLINOIS			CONTRACT NO. 63545	
FED. AID PROJECT CMM-9003(628)				