

STATE OF ILLINOIS
DEPARTMENT OF TRANSPORTATION
PLANS FOR

PROPOSED FEDERAL-AID HIGHWAY

FAP 336 (RANDALL ROAD)

AT BOLCUM ROAD

SECTION 04-00325-00-TL

PROJECT NO: CMF-0336(045)

INTERSECTION IMPROVEMENT

KANE COUNTY

C-91-376-06

F.A.P. RTE.	SECTION	COUNTY	TOTAL SHEETS	SHEET NO.
336	04-00325-00-TL	KANE	54	1
FED. ROAD DIST. NO. 1	ILLINOIS	CONTRACT NO.	63547	



LOCATION OF SECTION INDICATED THUS: - ■ -

FOR INDEX OF SHEETS, SEE SHEET NO. 2

DESIGN DESIGNATION

RANDALL ROAD
FUNCTIONAL CLASSIFICATION: SRA (URBAN MAJOR ARTERIAL)
DESIGN SPEED = 50 MPH
POSTED SPEED = 50 MPH

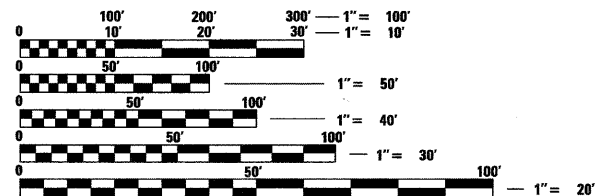
BOLCUM ROAD
FUNCTIONAL CLASSIFICATION: URBAN MINOR ARTERIAL
DESIGN SPEED = 45 MPH
POSTED SPEED = 45 MPH

TRAFFIC DATA

RANDALL ROAD
2004 ADT = 29860
2030 ADT = 42000

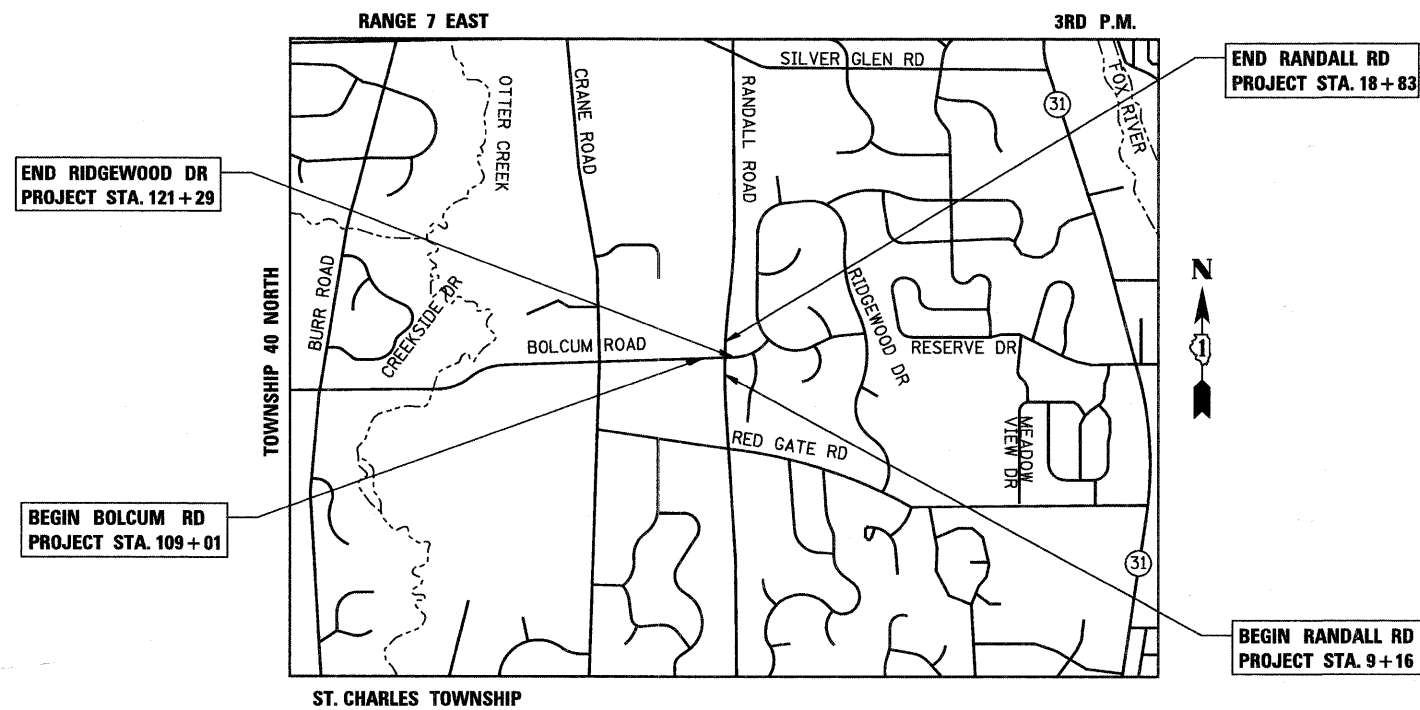
BOLCUM ROAD
2005 ADT = 3140
2030 ADT = 9000

PROJECT LOCATED IN
ST. CHARLES TOWNSHIP



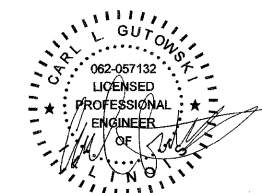
FULL SIZE PLANS HAVE BEEN PREPARED USING STANDARD ENGINEERING SCALES. REDUCED SIZED PLANS WILL NOT CONFORM TO STANDARD SCALES. IN MAKING MEASUREMENTS ON REDUCED PLANS, THE ABOVE SCALES MAY BE USED.

J.U.L.I.E.
JOINT UTILITY LOCATION INFORMATION FOR EXCAVATION
1-800-892-0123
OR 811



LOCATION MAP
1" = 1,500'

GROSS & NET LENGTH OF PROJECT (RANDALL ROAD) = 967 FT (0.18 MI.)
GROSS & NET LENGTH OF PROJECT (BOLCUM ROAD) = 1228 FT (0.23 MI.)
TOTAL PROJECT GROSS & NET LENGTH = 2,195 FT (0.41 MI.)



DATE: 12/17/2010
SEAL EXPIRES: 11/30/2011

STATE OF ILLINOIS
DEPARTMENT OF TRANSPORTATION
DIVISION OF HIGHWAYS

APPROVED 12-17-2010
[Signature]
COUNTY OF KANE, COUNTY ENGINEER

PASSED DEC 28 2010
[Signature]
DISTRICT 1 ENGINEER OF LOCAL ROAD & STREETS

RELEASING FOR BID
BASED ON LIMITED
REVIEW DECEMBER 29, 2010
[Signature]
DEPUTY DIRECTOR OF HIGHWAYS, REGION 1 ENGINEER

PRINTED BY THE AUTHORITY
OF THE STATE OF ILLINOIS

Ciorba Group, Inc.

DESIGN FIRM
REGISTRATION NUMBER

184-001016

CONSULTING ENGINEERS
SUITE 402, 5507 NORTH CUMBERLAND AVE
CHICAGO, ILLINOIS 60656 :: (773) 775-4009

PLANS PREPARED BY: CIORBA GROUP

PROGRAM AND OFFICE ENGINEER: CHARLES F. RIDDLE, P.E. (847) 705-4006 SCHAUMBURG, IL

CONTRACT NO. 63547