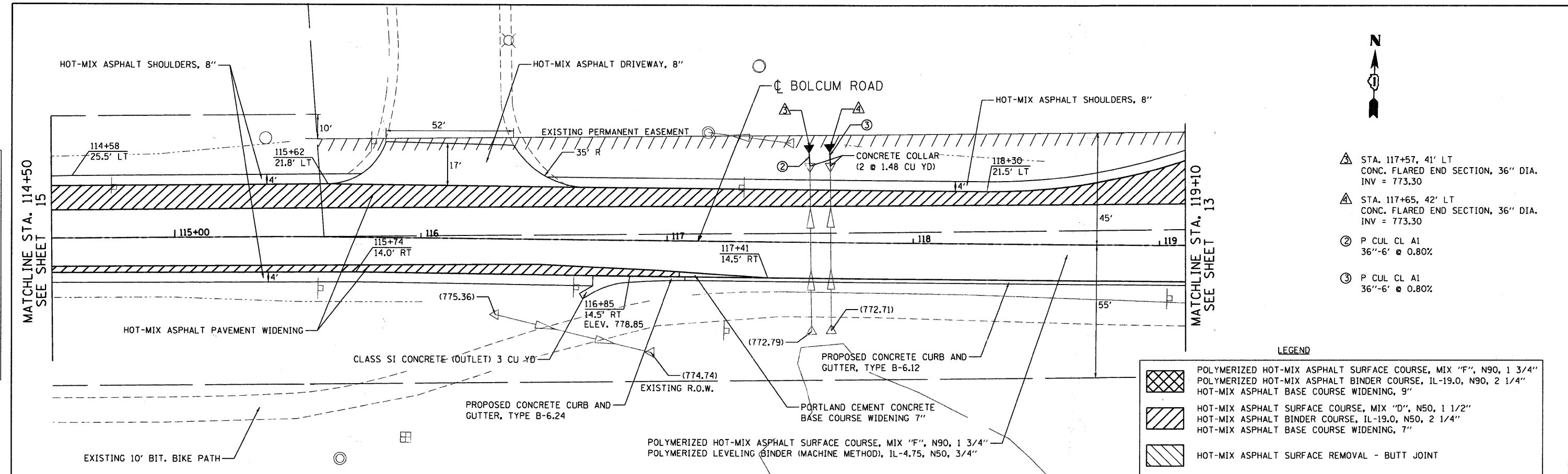


PLAN	DATE
BY	
REVISIONS	
NO.	
DATE	
DESCRIPTION	
NO.	
DATE	
DESCRIPTION	
NO.	
DATE	
DESCRIPTION	

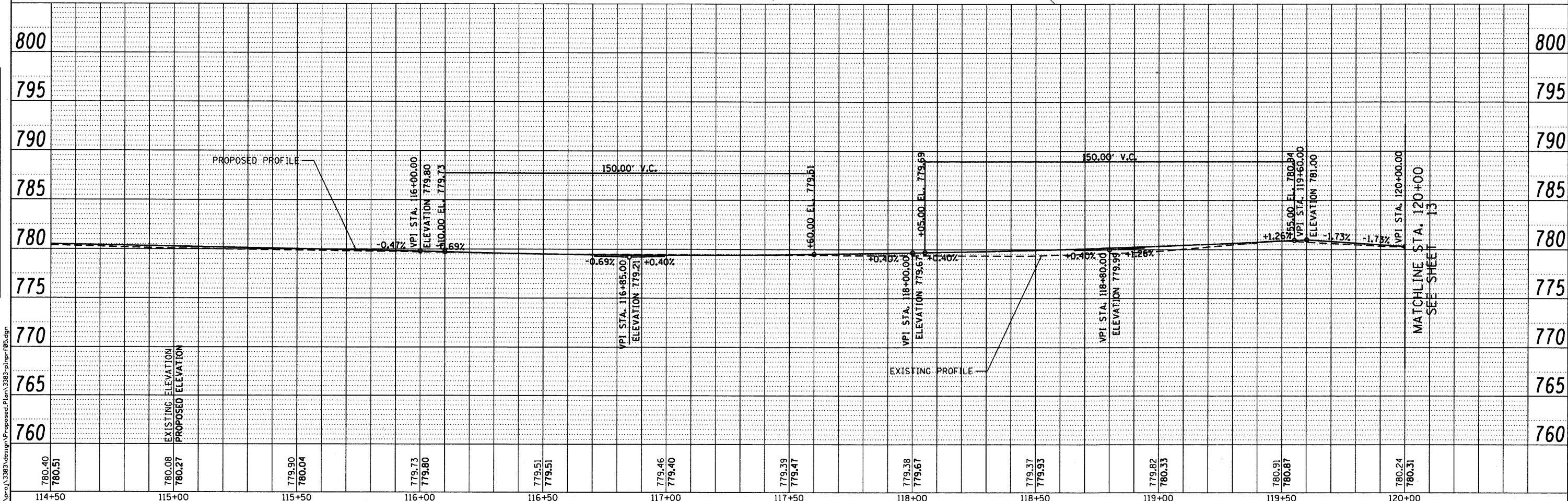
PROFILE	DATE
BY	
REVISIONS	
NO.	
DATE	
DESCRIPTION	
NO.	
DATE	
DESCRIPTION	
NO.	
DATE	
DESCRIPTION	



- N
- ▲ STA. 117+57, 41' LT  
CONC. FLARED END SECTION, 36" DIA.  
INV = 773.30
  - ▲ STA. 117+65, 42' LT  
CONC. FLARED END SECTION, 36" DIA.  
INV = 773.30
  - ② P CUL CL A1  
36"-6" @ 0.80%
  - ③ P CUL CL A1  
36"-6" @ 0.80%

LEGEND

	POLYMERIZED HOT-MIX ASPHALT SURFACE COURSE, MIX "F", N90, 1 3/4"
	POLYMERIZED HOT-MIX ASPHALT BINDER COURSE, IL-19.0, N90, 2 1/4"
	HOT-MIX ASPHALT SURFACE COURSE, MIX "D", N50, 1 1/2"
	HOT-MIX ASPHALT BINDER COURSE, IL-19.0, N50, 2 1/4"
	HOT-MIX ASPHALT SURFACE REMOVAL - BUTT JOINT



800	795	790	785	780	775	770	765	760			
114+50	115+00	115+50	116+00	116+50	117+00	117+50	118+00	118+50	119+00	119+50	120+00

**Ciorba Group, Inc.**  
CONSULTING ENGINEERS  
5507 North Cumberland Avenue, Suite 402  
Chicago, Illinois 60656  
Tel. 773.775.4009 Fax 773.775.4014

USER NAME = espino	DESIGNED - CLG	REVISED -
PLOT SCALE = 28.0000' / IN.	DRAWN - EPS	REVISED -
PLOT DATE = 12/20/2010	CHECKED - MJL	REVISED -
	DATE - 12-20-2010	REVISED -

**KANE COUNTY DIVISION OF TRANSPORTATION**

**PROPOSED PLAN AND PROFILE**

SCALE: 1" = 20' SHEET NO. OF SHEETS STA. TO STA.

F.A.P. RTE. 336	SECTION 04-00325-00-TL	COUNTY KANE	TOTAL SHEETS 54	SHEET NO. 16
CONTRACT NO. 63547				
FED. ROAD DIST. NO. 1 ILLINOIS FED. AID PROJECT				