

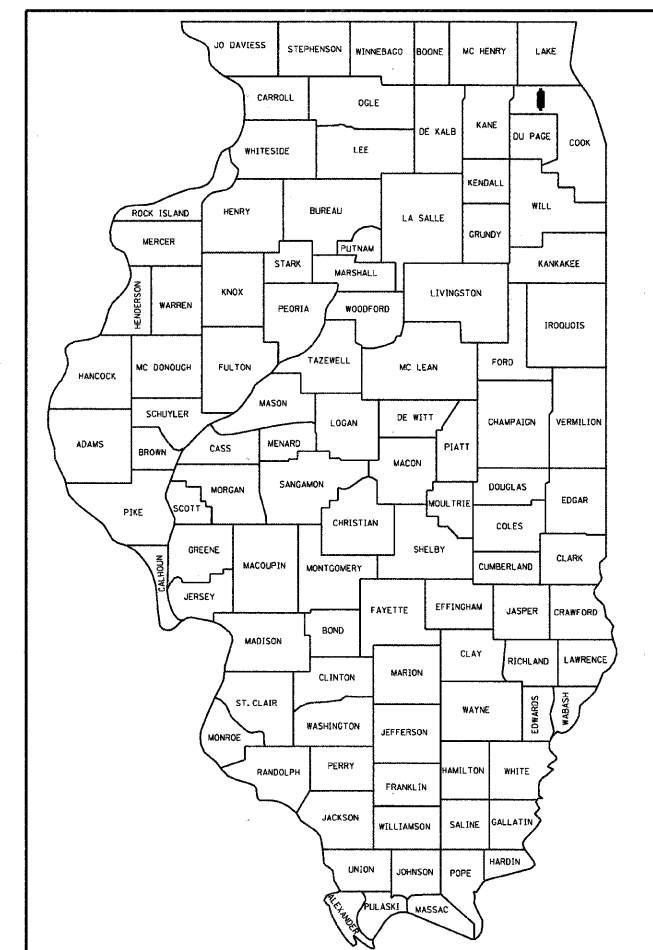
STATE OF ILLINOIS
DEPARTMENT OF TRANSPORTATION
DIVISION OF HIGHWAYS

PLANS FOR PROPOSED FEDERAL-AID HIGHWAY

FAU 2582 (PLUM GROVE ROAD)
SCHAUMBURG ROAD TO STONEWALL CT
SECTION 10-00102-00-LT
PROJECT NO. M-9003 (768)
ROADWAY LIGHTING IMPROVEMENT
VILLAGE OF SCHAUMBURG
COOK COUNTY

C-91-353-11

F.A.U. RTE.	SECTION	COUNTY	TOTAL SHEETS	SHEET NO.
2582	10-00102-00-LT	COOK	13	1
		ILLINOIS	CONTRACT NO. 63564	



LOCATION OF SECTION INDICATED THUS: - [Symbol] -

INDEX OF SHEETS

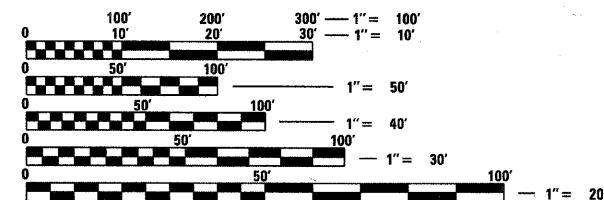
SHEET NO.	DESCRIPTION
1.	COVER SHEET
2.	SUMMARY OF QUANTITIES, GENERAL NOTES AND LEGEND
3.	EXISTING LIGHTING INTERSECTION OF SCHAUMBURG ROAD AND PLUM GROVE ROAD STA. 302+00 TO STA. 317+00
4.	PROPOSED LIGHTING STA. 307+04.16 TO STA. 317+00
5.	PROPOSED LIGHTING STA. 317+00 TO STA. 342+00
6.	PROPOSED LIGHTING STA. 342+00 TO STA. 346+55
7.	SINGLE LINE DIAGRAM LIGHTING CONTROLLER AT THACKER STREET
8.	LIGHT POLE ALUMINUM 40 FT MOUNTING HEIGHT, 6 FT TRUSS ARM
9.	LIGHT POLE FOUNDATION, METAL 15" BOLT CIRCLE, 8" x 8'
10.	LIGHT POLE FOUNDATION, 24" DIAMETER OFFSET
11.	LIGHTING CONTROLLER SPECIAL, 200 AMP-240/480 VOLT, 1 PHASE, 3 WIRE WITH PHOTOCCELL CONTROL
12.	ELECTRIC SERVICE INSTALLATION, POLE TOP MOUNTED TRANSFORMER
13.	ELECTRIC DETAILS

LIST OF STANDARDS:

000001-06 SYMBOLS, ABBREVIATIONS, AND PATTERNS
701501-06 URBAN LANE CLOSURE, 2L, 2W, UNDIVIDED
701606-07 URBAN LANE CLOSURE, MULTILANE, 2W WITH MOUNTABLE MEDIAN
701701-07 URBAN LANE CLOSURE, MULTILANE INTERSECTION
701901-01 TRAFFIC CONTROL DEVICES

DESIGN

POSTED SPEED LIMIT - 40 MPH
AVERAGE DAILY TRAFFIC (ADT): 17,400 (2005):
ILLUMINATING ENGINEERING SOCIETY (IES)
ROAD/AREA CLASSIFICATION: COLLECTOR MEDIUM

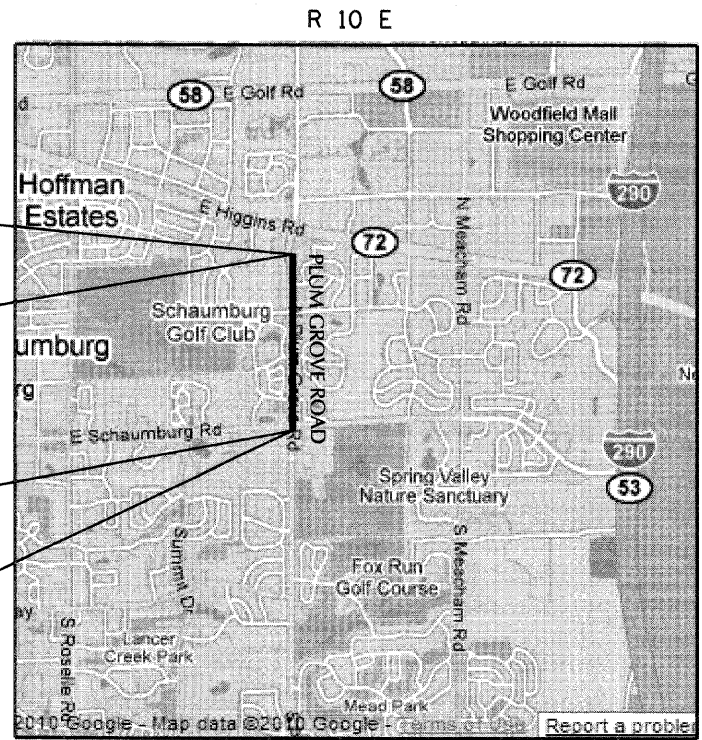


FULL SIZE PLANS HAVE BEEN PREPARED USING STANDARD ENGINEERING SCALES. REDUCED SIZED PLANS WILL NOT CONFORM TO STANDARD SCALES. IN MAKING MEASUREMENTS ON REDUCED PLANS, THE ABOVE SCALES MAY BE USED.

J.U.L.I.E.
JOINT UTILITY LOCATION INFORMATION FOR EXCAVATION
1-800-892-0123
OR 811

IMPROVEMENT ENDS
STA. 346+55.00
STONEWALL CT

IMPROVEMENT BEGINS
STA. 307+04.16
SCHAUMBURG ROAD



22W-10N, SCHAUMBURG TOWNSHIP
LOCATION MAP
NOT TO SCALE

GROSS LENGTH = 3951 FT. = 0.75 MILE
NET LENGTH = 3951 FT. = 0.75 MILE

STATE OF ILLINOIS
DEPARTMENT OF TRANSPORTATION
DIVISION OF HIGHWAYS

APPROVED January 4, 2011
[Signature]
VILLAGE OF SCHAUMBURG, DIRECTOR OF ENGINEER AND PUBLIC WORKS

PASSED January 5, 2011
[Signature]
DISTRICT ONE ENGINEER OF LOCAL ROADS & STREETS

RELEASING FOR BID
BASED ON LIMITED
REVIEW JANUARY 6, 2011
[Signature]
DEPUTY DIRECTOR OF HIGHWAYS, REGION ONE ENGINEER

PRINTED BY THE AUTHORITY
OF THE STATE OF ILLINOIS



212 TIMBERCREST DRIVE SCHAUMBURG, ILLINOIS 60193
TEL: 847-891-5486 - FAX: 847-891-5363
e-mail: sunjoy00@hotmail.com

PROGRAM AND OFFICE ENGINEER: CHARLES F. RIDDLE, P.E. 847-705-4406, SCHAUMBURG, IL.
CONSULTANT ENGINEER: JAGDISH SHAH SUNJOY INC.

CONTRACT NO. 63564