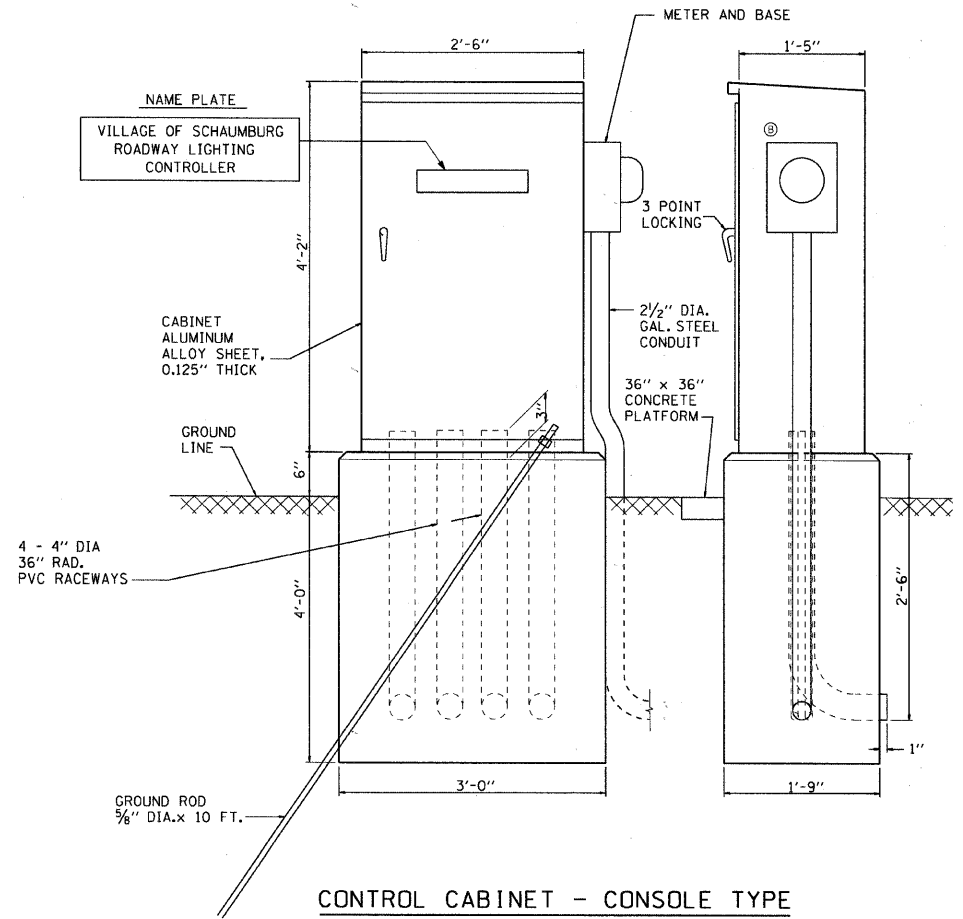
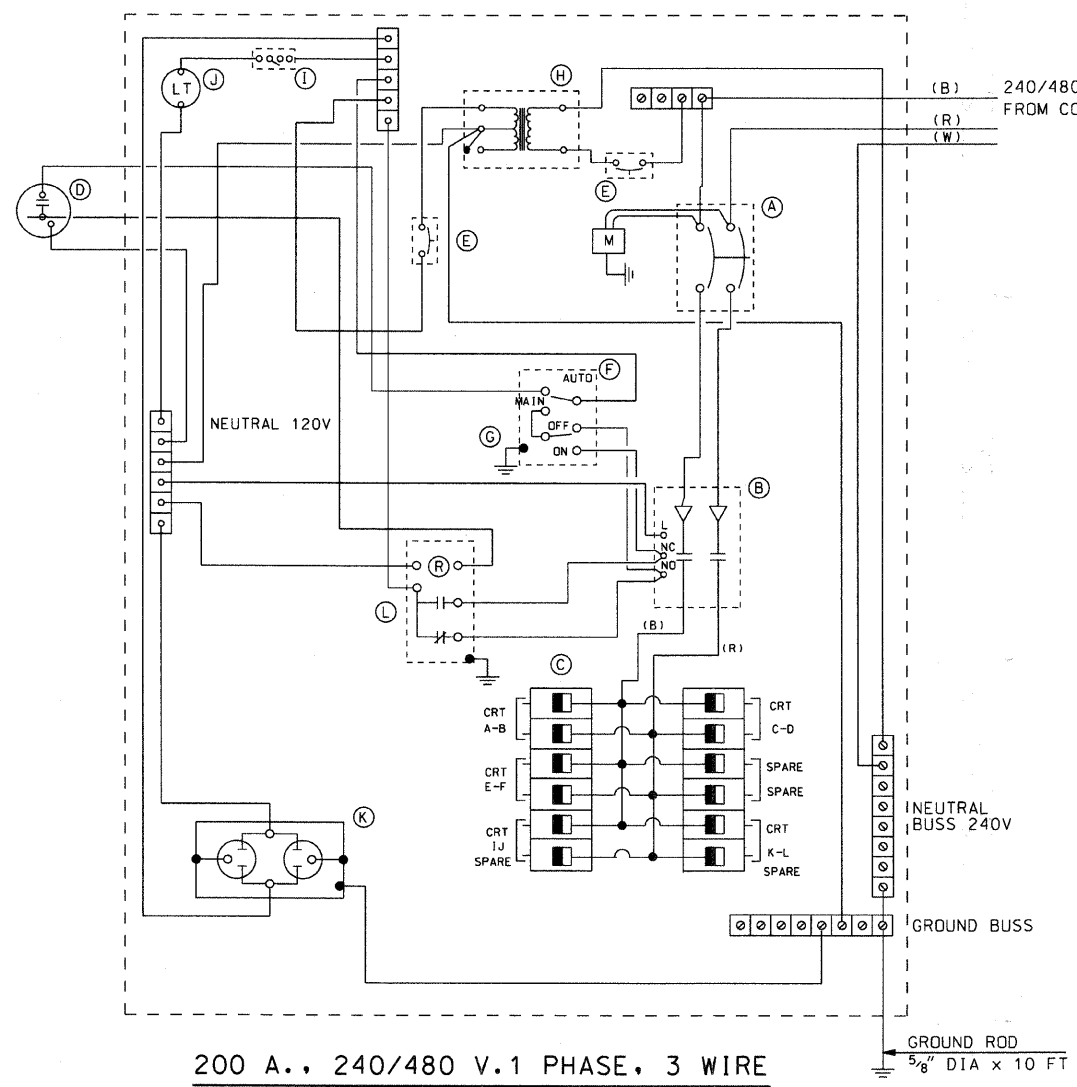


PANEL WIRING DIAGRAM



CONTROL CABINET - CONSOLE TYPE



200 A., 240/480 V. 1 PHASE, 3 WIRE WITH PHOTOCELL CONTROL

DEVICE SCHEDULE		
ITEM	QUANT.	DESCRIPTION
(A)	1	225 AMP CIRCUIT BREAKER, MOLDED CASE, THERMAL MAGNETIC, 2-POLE, SINGLE THROW, 600V FRAME, NON-INTERCHANGABLE TRIP, BOLT ON TYPE.
(B)	1	200 A., ELECTRICALLY OPERATED AND MECHANICALLY HELD LIGHTING CONTACTOR, 2-POLE, 600 V. WITH 120 V. COIL
(C)	12	240/480 V. 1 PHASE PANEL BOARD WITH 200 A. COPPER MAINS SINGLE POLE, 50 A., 277 V. BOLT ON BRANCH CIRCUIT BREAKERS
(D)	1	PHOTO-ELECTRIC CELL, 120V, MOUNT ON CABINET
(E)	2	THERMAL MAGNETIC, MOLDED CASE CIRCUIT BREAKER, 1 POLE, 30 A., 277 V. BOLT ON TYPE.
(F)	1	CONTROL SWITCH, MOMENTARY CONTACT, SPDT, 15 A., 240 V.
(G)	1	CONTROL SWITCH, TOGGLE TYPE, SPDT, 20 A., 240 V. SPEC. GRADE
(H)	1	240/120V. STEP DOWN CONTROL TRANSFORMER 750 VA RATED
(I)	1	MICRO SWITCH (MOUNTED WITH ACTUATOR TO SWITCH WHEN DOOR IS OPEN)
(J)	1	60 WATT LIGHT FIXTURE VAPORTIGHT WITH GLOBE, GUARD AND MOUNTING BOX
(K)	1	120 VOLT, 15A. RECEPTACLE, SPECIFICATION GRADE IN NEMA 5-15R WEATHER PROOF BOX WITH FLAP-TYPE COVER
(L)	1	POWER RELAY WITH CONTACTS RATED FOR CONTACTOR INRUSH CURRENT - 120 V COIL
(M)	1	SURGE ARRESTOR
(N)	1	ELECTRIC METER BOX

NOTES

THE CABINET SHALL BE FABRICATED FROM 0.125" THICK ALUMINUM ALLOY SHEET AND SHALL BE REINFORCED WITH ALUMINUM ANGLES. THE CABINET DOOR SHALL BE NEMA TYPE 3 CONSTRUCTION WITH NEOPRENE GASKET. THE DOOR SHALL HAVE STAINLESS STEEL HINGES AND THREE POINT LOCKING SYSTEM.

THE CABINET SHALL BE PRIMED AND PAINTED IN GREEN COLOR.

THE CONTRACTOR SHALL REMOVE VEGETATION AND TOPSOIL, LEVEL THE AREA IN FRONT OF THE CONTROL CABINET DOOR AND PLACE LENGTH WISE, PARALLEL TO CONTROL CABINET, A PRECAST PAD, 36"x60"x3" MINIMUM SIZE. THE COST OF LABOR AND MATERIALS SHALL BE INCIDENTAL TO THE CONTROL CABINET.

THE HEADS OF CONNECTOR SCREWS SHALL BE PAINTED WHITE FOR NEUTRAL BUSS CONNECTION AND GREEN FOR GROUND BUSS CONNECTORS.

PROVIDE SEALING GROMMETS FOR ALL OPEN WIRING EXTENDED FROM DEVICES IN BOXES WITHIN THE CONTROL CABINET.

CONTROL WIRE SHALL BE #12 AWG, 600V, TYPE "SIS" STRANDED COPPER GRAY SWITCH BOARD WIRE. THE ENDS OF ALL CONTROL WIRES SHALL BE IDENTIFIED.

ALL WIRING SHALL BE NEATLY DRESSED AND SUPPORTED.

THE CONTROLLER SHALL BE CONSTRUCTED TO U.L. STD. 508 AND BEAR THE U.L. LABEL "ENCLOSED INDUSTRIAL CONTROL PANEL".

ALL CONTROL CABINET ITEMS SHALL HAVE SUITABLE IDENTIFICATION. OPEN CIRCUIT BREAKERS, CONTACTORS AND OTHER OPEN DEVICES SHALL HAVE PERMANENT SELF STICKING TAGS. DEVICES IN ENCLOSURES SHALL HAVE ENGRAVED 2-COLOR LAMINATED PLASTIC NAMEPLATES ATTACHED TO ENCLOSURES WITH SCREWS. NAMEPLATES SHALL BE ENGRAVED TO CORRESPOND TO DESIGNATIONS ON THE DRAWINGS. INTERNAL CABINET WIRING SHALL BE IDENTIFIED AS INDICATED OR AS DIRECTED BY THE ENGINEER BY MEANS OF SELF-STICKING TAGS APPLIED AT EACH CONNECTED END. IDENTIFICATION SHALL BE MADE BY THE CABINET MANUFACTURE.

PROVIDE A HOLDER AND WATERPROOF POUCH ON THE INNER SIDE OF THE CONTROLLER DOOR. THE HOLDER AND POUCH SHALL BE MOUNTED SO THAT RAIN WATER OR CONDENSED WATER CANNOT ENTER THE POUCH WITH THE CABINET DOOR OPEN. FURNISH THE APPROVED COPY OF THE "CONTROL CABINET WIRING DIAGRAM".

ALL WIRING WITHIN THE CABINET SHALL BE COLOR CODED AS INDICATED.

R = RED BL = BLUE W = WHITE
B = BLACK Y = YELLOW G = GREEN

PROVIDE SEALING GROMMETS FOR ALL OPEN WIRING EXTENDED FROM DEVICES IN BOXES OR CABINETS WITHIN THE CONTROL CABINET.

ALL 120 VOLT SYSTEM CONTROL WIRING SHALL BE #12 AWG STRANDED UNLESS OTHERWISE INDICATED.

C:\SUNJOY\Projects\Village of Schaumburg\p2_Plumgrove Road\controller8.dgn 12/17/2010

Sunjoy Inc.
Area Lighting
Consulting Engineers
212 TIMBERCREST DRIVE
SCHAUMBURG, ILLINOIS
60193-1572

REVISIONS	
NAME	DATE

VILLAGE OF SCHAUMBURG, ILLINOIS
DEPARTMENT OF ENGINEERING AND PUBLIC WORKS
ROADWAY LIGHTING IMPROVEMENTS
PLUM GROVE ROAD
LIGHTING CONTROLLER, SPECIAL
200 AMP, 240/480 VOLT, 1 PHASE, 3 WIRE
WITH PHOTOCELL CONTROL

SCALE: _____ DRAWN BY: HKQ
DATE: 9-21-09 CHECKED BY: JS